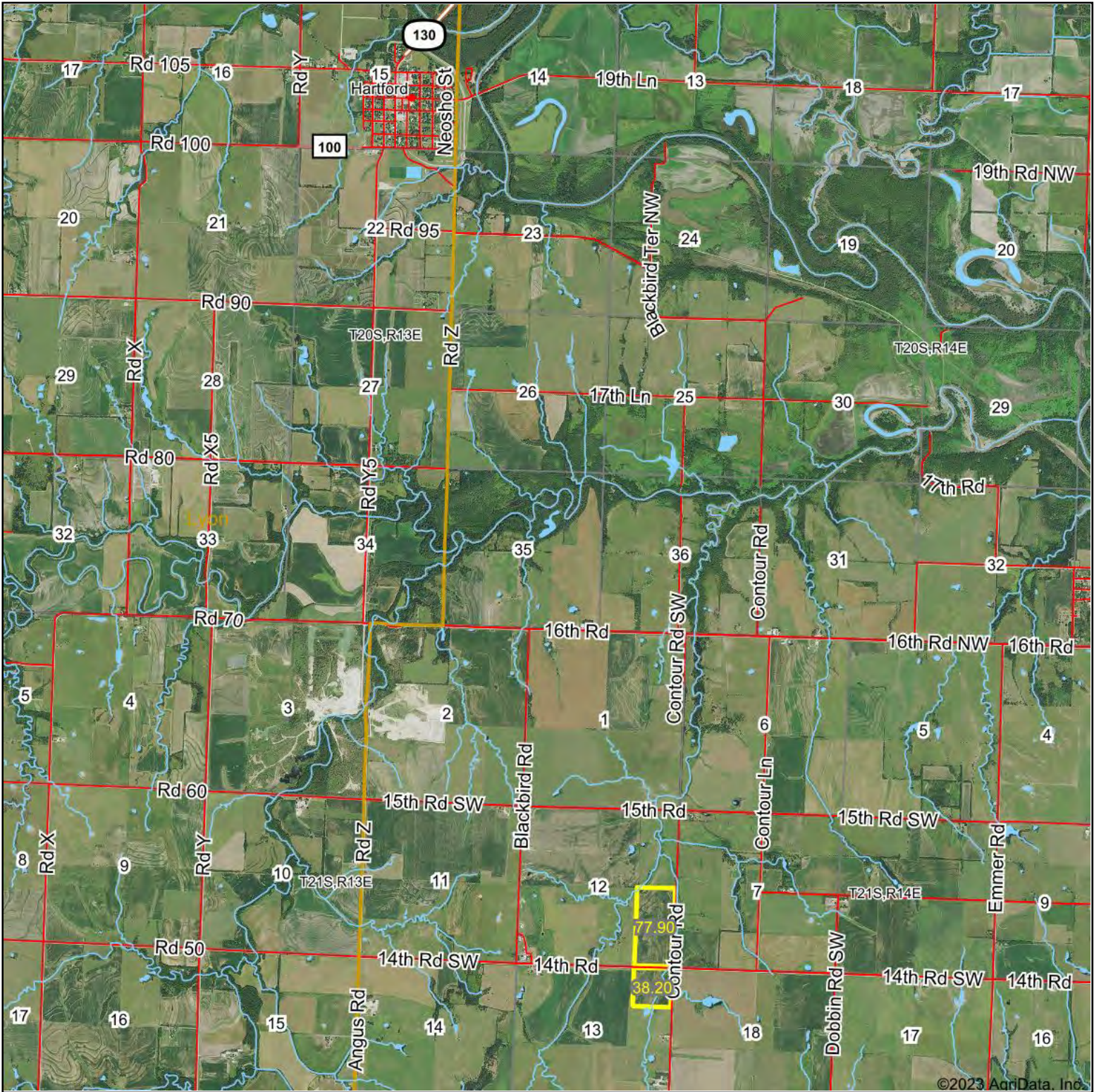


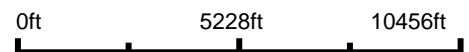
# Aerial Map



©2023 AgriData, Inc.



Boundary Center: 38° 13' 50.4, -95° 55' 26.91



**12-21S-13E**  
**Coffey County**  
**Kansas**

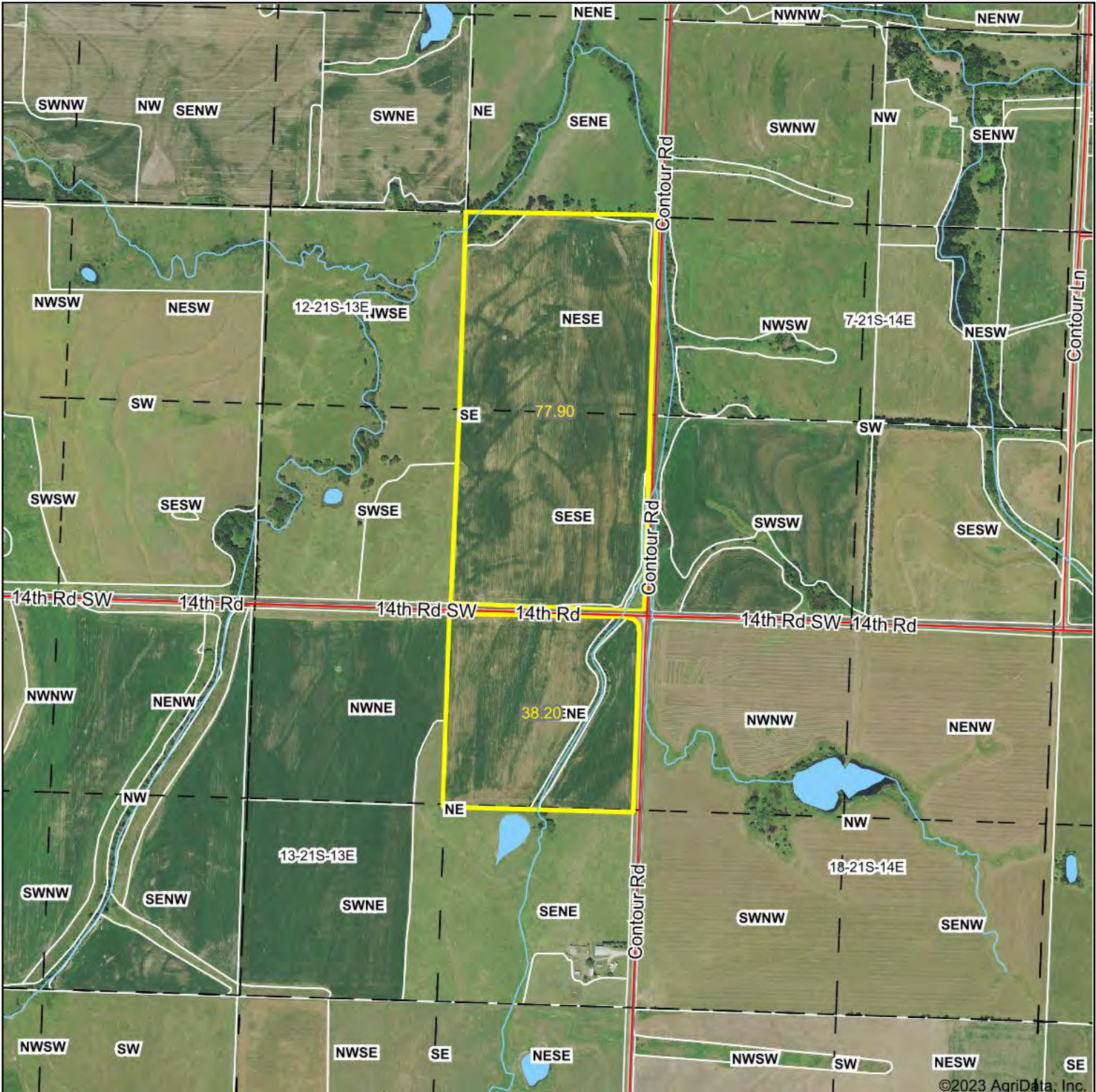


Maps Provided By:  
 **surety**  
 CUSTOMIZED ONLINE MAPPING  
 © AgriData, Inc. 2023 www.AgriDataInc.com

12/27/2023

Field borders provided by Farm Service Agency as of 5/21/2008.

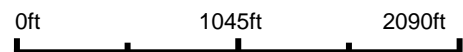
# Aerial Map



©2023 AgriData, Inc.



Boundary Center: 38° 13' 50.4, -95° 55' 26.91



12-21S-13E  
Coffey County  
Kansas



Maps Provided By:



© AgriData, Inc. 2023 www.AgriDataInc.com

12/27/2023

Field borders provided by Farm Service Agency as of 5/21/2008.



# Aerial Map



Boundary Center: 38° 13' 37.04, -95° 55' 27.11



**13-21S-13E**  
**Coffey County**  
**Kansas**



Maps Provided By:

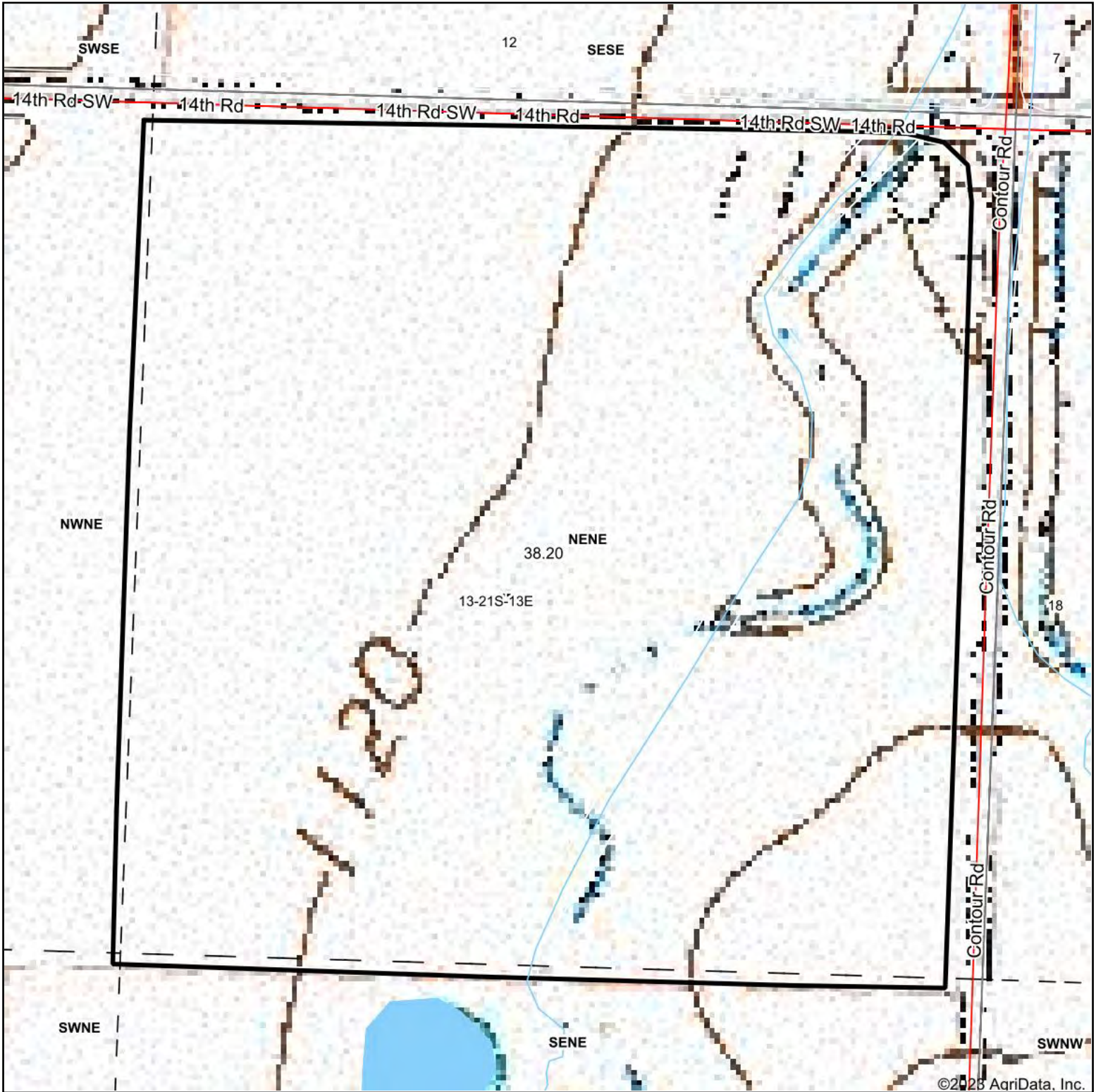


© AgriData, Inc. 2023 www.AgriDataInc.com

12/27/2023

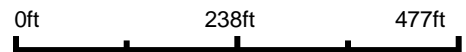
Field borders provided by Farm Service Agency as of 5/21/2008.

# Topography Map



©2025 AgriData, Inc.

Map Center: 38° 13' 37.09, -95° 55' 27.03



**13-21S-13E**  
**Coffey County**  
**Kansas**



12/27/2023



Maps Provided By:



© AgriData, Inc. 2023

www.AgriDataInc.com

# Topography Contours

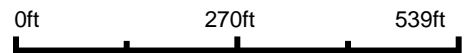


©2023 AgriData, Inc.



Field borders provided by Farm Service Agency as of 5/21/2008.

Source: USGS 3 meter dem  
 Interval(ft): 2.0  
 Min: 1,107.1  
 Max: 1,128.6  
 Range: 21.5  
 Average: 1,118.8  
 Standard Deviation: 5.48 ft

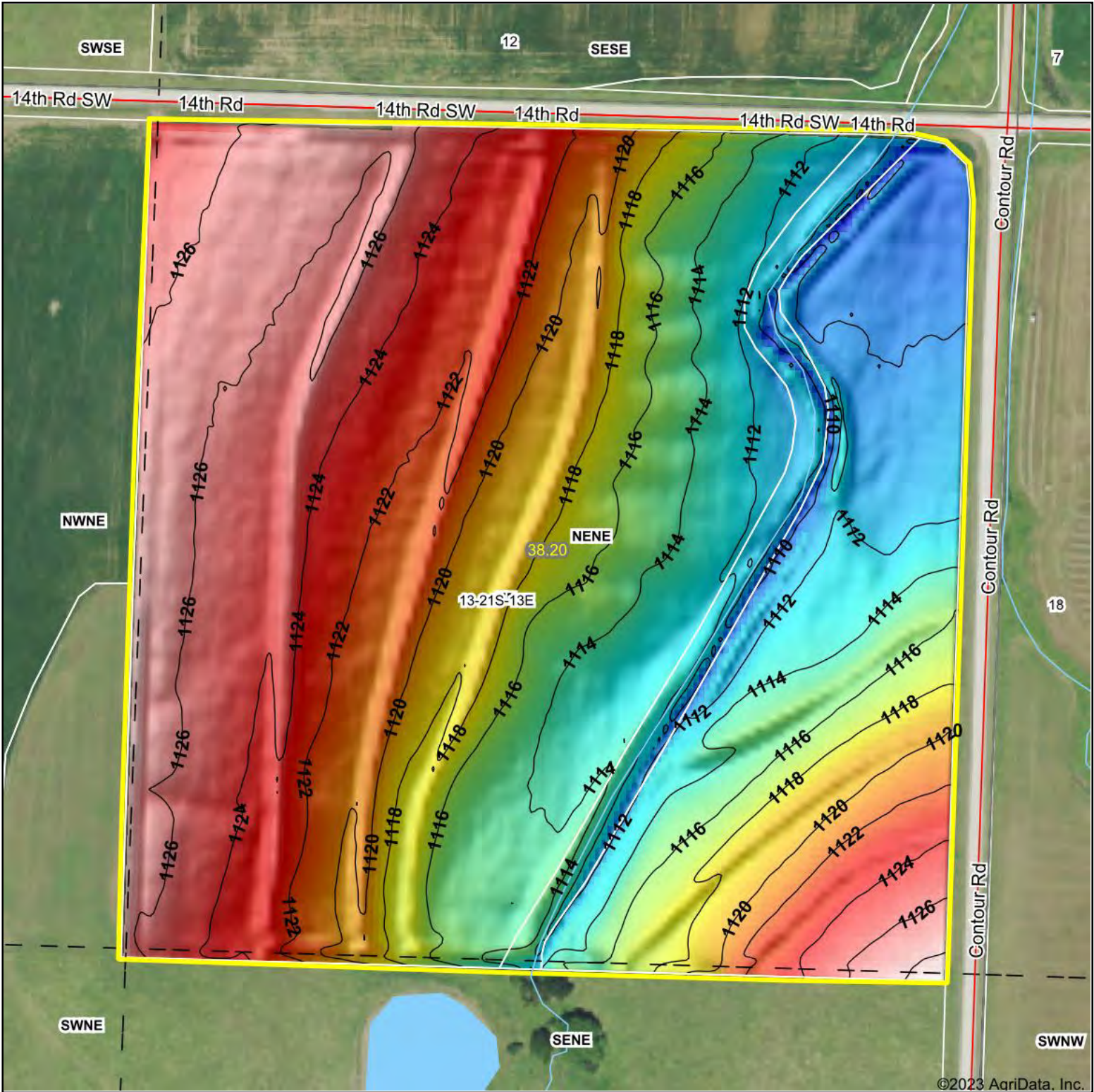


12/27/2023

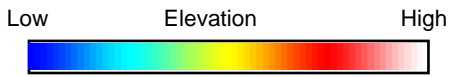
13-21S-13E  
 Coffey County  
 Kansas

Boundary Center: 38° 13' 37.04, -95° 55' 27.11

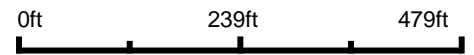
# Topography Hillshade



©2023 AgriData, Inc.



Source: USGS 3 meter dem  
 Interval(ft): 2  
 Min: 1,107.1  
 Max: 1,128.6  
 Range: 21.5  
 Average: 1,118.8  
 Standard Deviation: 5.48 ft



Maps Provided By:



© AgriData, Inc. 2023 www.AgriDataInc.com

Field borders provided by Farm Service Agency as of 5/21/2008.

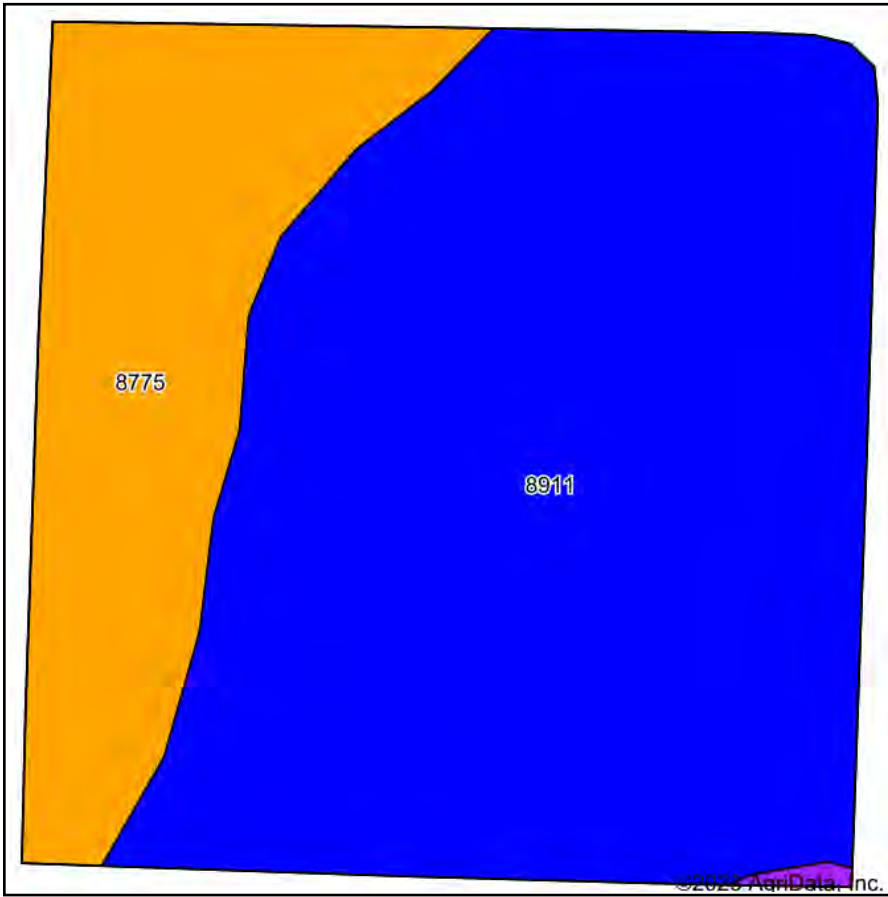


12/27/2023

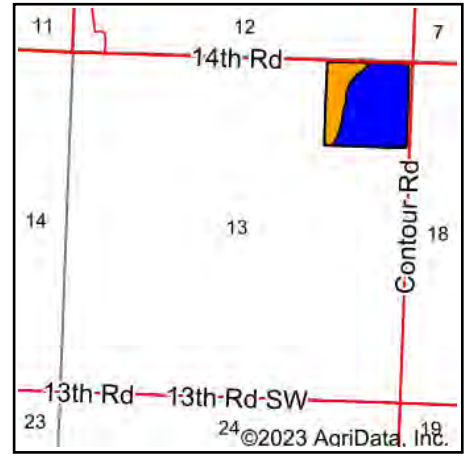
**13-21S-13E**  
**Coffey County**  
**Kansas**

Boundary Center: 38° 13' 37.04, -95° 55' 27.11

# Soils Map



Soils data provided by USDA and NRCS.



State: **Kansas**  
 County: **Coffey**  
 Location: **13-21S-13E**  
 Township: **Pleasant**  
 Acres: **38.2**  
 Date: **12/27/2023**



Maps Provided By:



© AgriData, Inc. 2023

www.AgriDataInc.com



Area Symbol: KS031, Soil Area Version: 21

Code	Soil Description	Acres	Percent of field	Non-Irr Class Legend	Non-Irr Class *c	*n NCCPI Soybeans
8911	Summit silty clay loam, 1 to 3 percent slopes	28.26	74.0%		Ile	60
8775	Kenoma silt loam, 1 to 3 percent slopes	9.83	25.7%		IIIle	59
8665	Clareson-Shidler complex, 1 to 8 percent slopes	0.11	0.3%		VIle	27
<b>Weighted Average</b>					<b>2.27</b>	<b>*n 59.6</b>

\*n: The aggregation method is "Weighted Average using all components"

\*c: Using Capabilities Class Dominant Condition Aggregation Method

Soils data provided by USDA and NRCS.



# Aerial Map



Boundary Center: 38° 13' 37.03, -95° 55' 27.11



13-21S-13E  
Coffey County  
Kansas

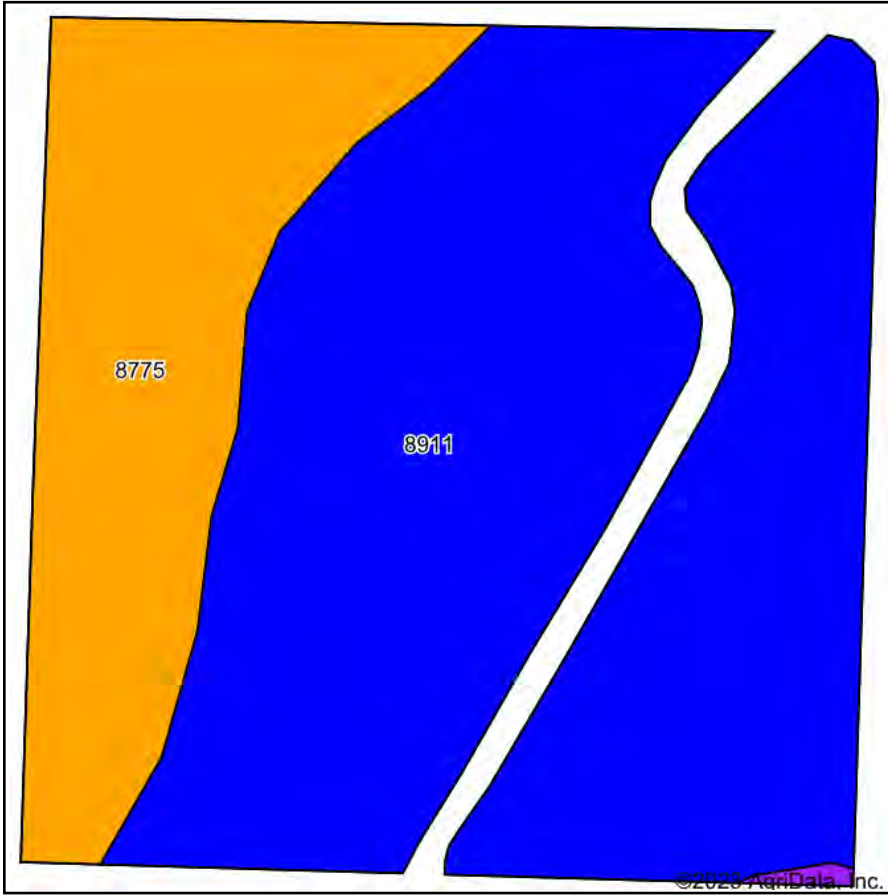


Maps Provided By:  
  
CUSTOMIZED ONLINE MAPPING  
© AgriData, Inc. 2023 www.AgriDataInc.com

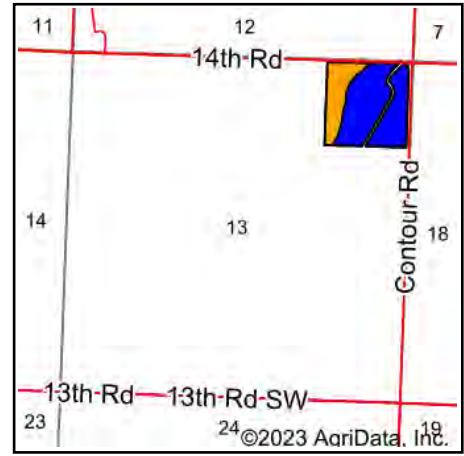
12/27/2023

Field borders provided by Farm Service Agency as of 5/21/2008.

# Soils Map



Soils data provided by USDA and NRCS.



State: **Kansas**  
 County: **Coffey**  
 Location: **13-21S-13E**  
 Township: **Pleasant**  
 Acres: **35.89**  
 Date: **12/27/2023**



Maps Provided By:



© AgriData, Inc. 2023

www.AgriDataInc.com



Area Symbol: KS031, Soil Area Version: 21

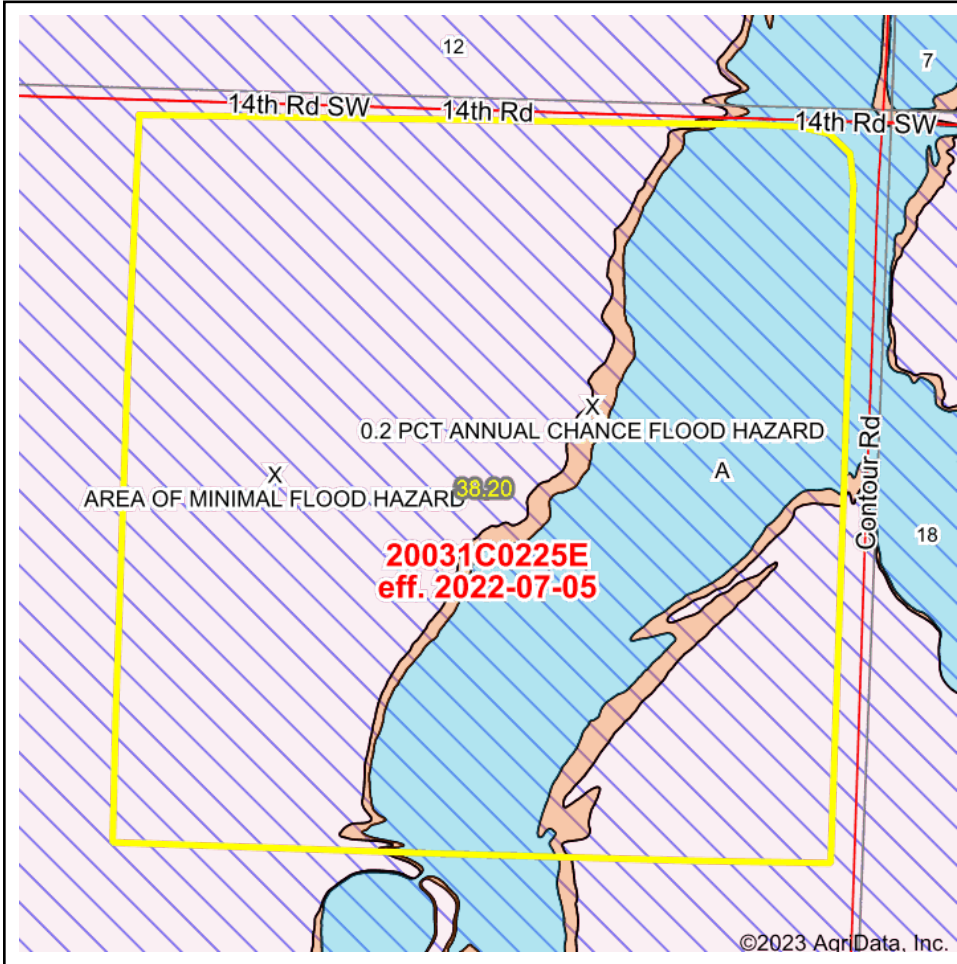
Code	Soil Description	Acres	Percent of field	Non-Irr Class Legend	Non-Irr Class *c	*n NCCPI Soybeans
8911	Summit silty clay loam, 1 to 3 percent slopes	26.19	73.0%		Ile	60
8775	Kenoma silt loam, 1 to 3 percent slopes	9.61	26.8%		IIIle	59
8665	Clareson-Shidler complex, 1 to 8 percent slopes	0.09	0.3%		VIle	27
<b>Weighted Average</b>					<b>2.28</b>	<b>*n 59.6</b>

\*n: The aggregation method is "Weighted Average using all components"

\*c: Using Capabilities Class Dominant Condition Aggregation Method

Soils data provided by USDA and NRCS.

# FEMA Report



Map Center: 38° 13' 37.09, -95° 55' 27.03

State: KS Acres: 38.2  
 County: Coffey Date: 12/27/2023  
 Location: 13-21S-13E  
 Township: Pleasant



Name	Number	County	NFIP Participation	Acres	Percent
COFFEY COUNTY	200062	Coffey	None	38.2	100%
<b>Total</b>				38.2	100%

Map Change	Date	Case No.	Acres	Percent
No			0	0%

Zone	SubType	Description	Acres	Percent
X	AREA OF MINIMAL FLOOD HAZARD	Outside 500-year Floodplain	24.98	65.4%
A		100-year Floodplain	11.44	29.9%
X	0.2 PCT ANNUAL CHANCE FLOOD HAZARD	500-year floodplain	0.94	2.5%
X	0.2 PCT ANNUAL CHANCE FLOOD HAZARD	500-year floodplain	0.84	2.2%
<b>Total</b>			38.20	100%

Panel	Effective Date	Acres	Percent
20031C0225E	7/5/2022	38.2	100%
<b>Total</b>		38.2	100%