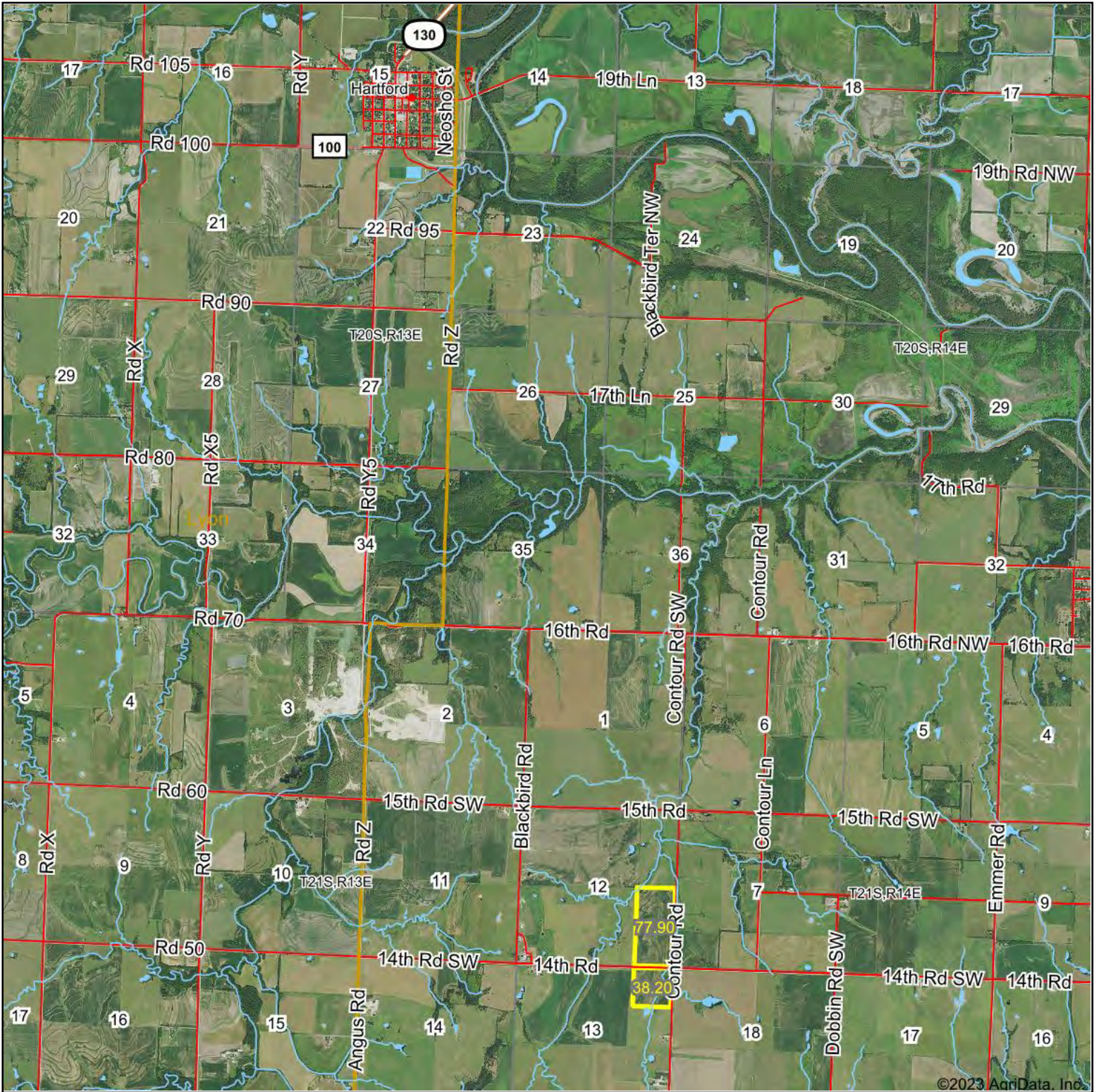


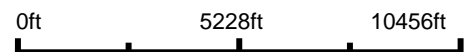
Aerial Map



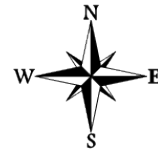
©2023 AgriData, Inc.



Boundary Center: 38° 13' 50.4, -95° 55' 26.91



12-21S-13E
Coffey County
Kansas

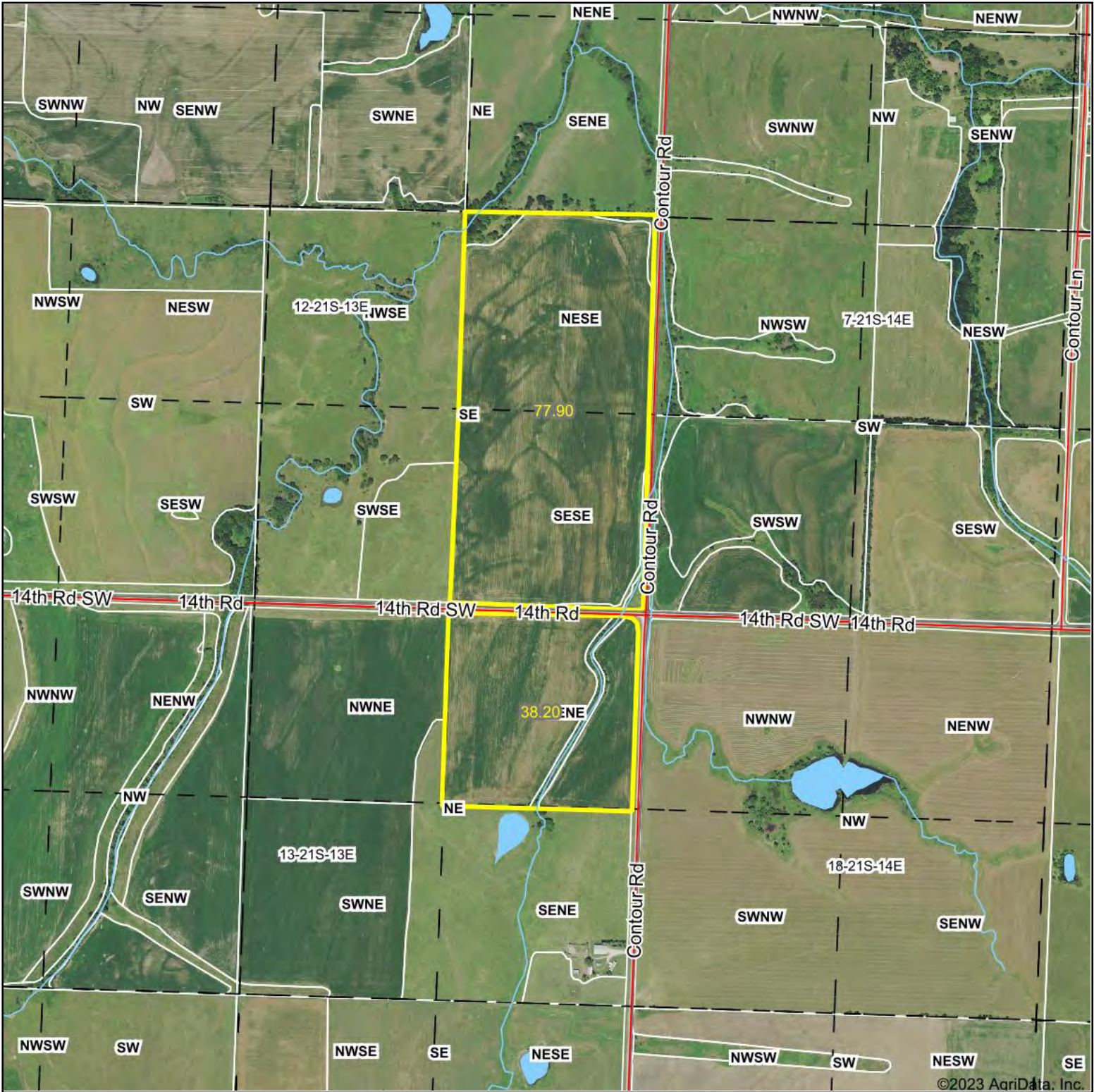


Maps Provided By:
surety
CUSTOMIZED ONLINE MAPPING
© AgriData, Inc. 2023 www.AgriDataInc.com

12/27/2023

Field borders provided by Farm Service Agency as of 5/21/2008.

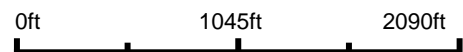
Aerial Map



©2023 AgriData, Inc.



Boundary Center: 38° 13' 50.4, -95° 55' 26.91



12-21S-13E
Coffey County
Kansas

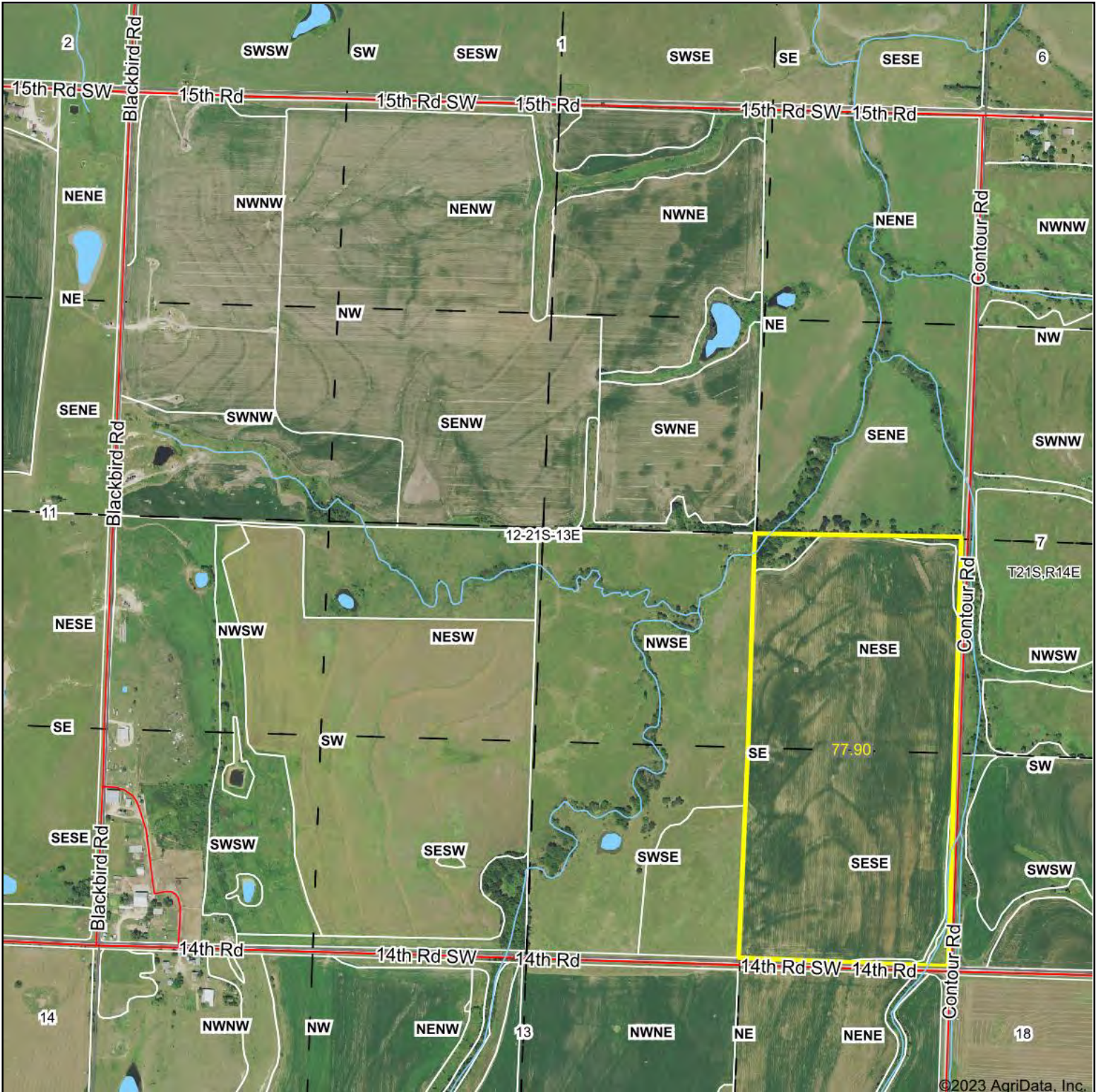


Maps Provided By:
surety
CUSTOMIZED ONLINE MAPPING
© AgriData, Inc. 2023 www.AgriDataInc.com

12/27/2023

Field borders provided by Farm Service Agency as of 5/21/2008.

Aerial Map



Boundary Center: 38° 13' 57.09, -95° 55' 26.84



12-21S-13E
Coffey County
Kansas

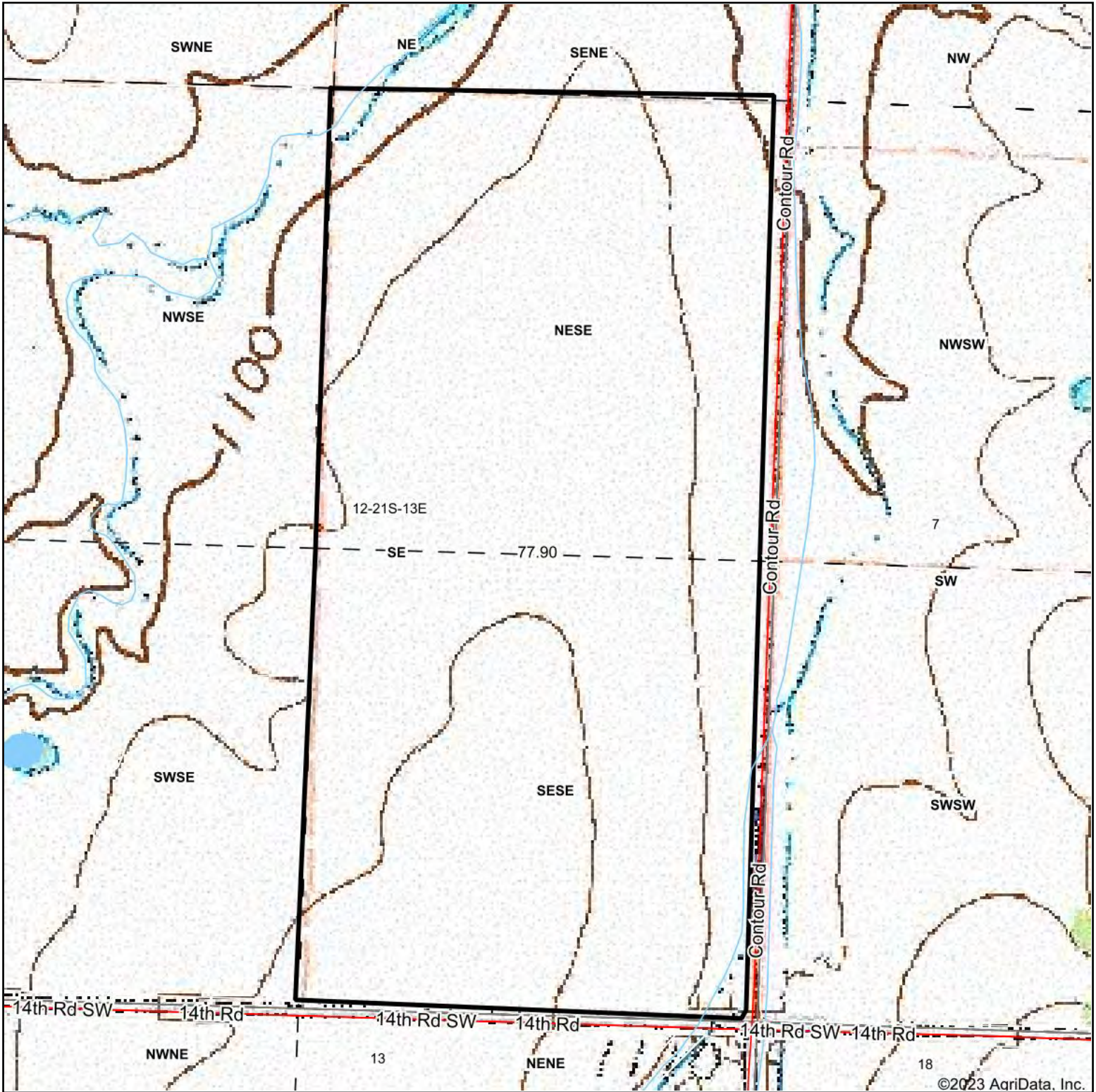


Maps Provided By:
surety
CUSTOMIZED ONLINE MAPPING
© AgriData, Inc. 2023 www.AgriDataInc.com

12/27/2023

Field borders provided by Farm Service Agency as of 5/21/2008.

Topography Map



©2023 AgriData, Inc.



Maps Provided By:



© AgriData, Inc. 2023

www.AgriDataInc.com

Map Center: 38° 13' 57.18, -95° 55' 26.41

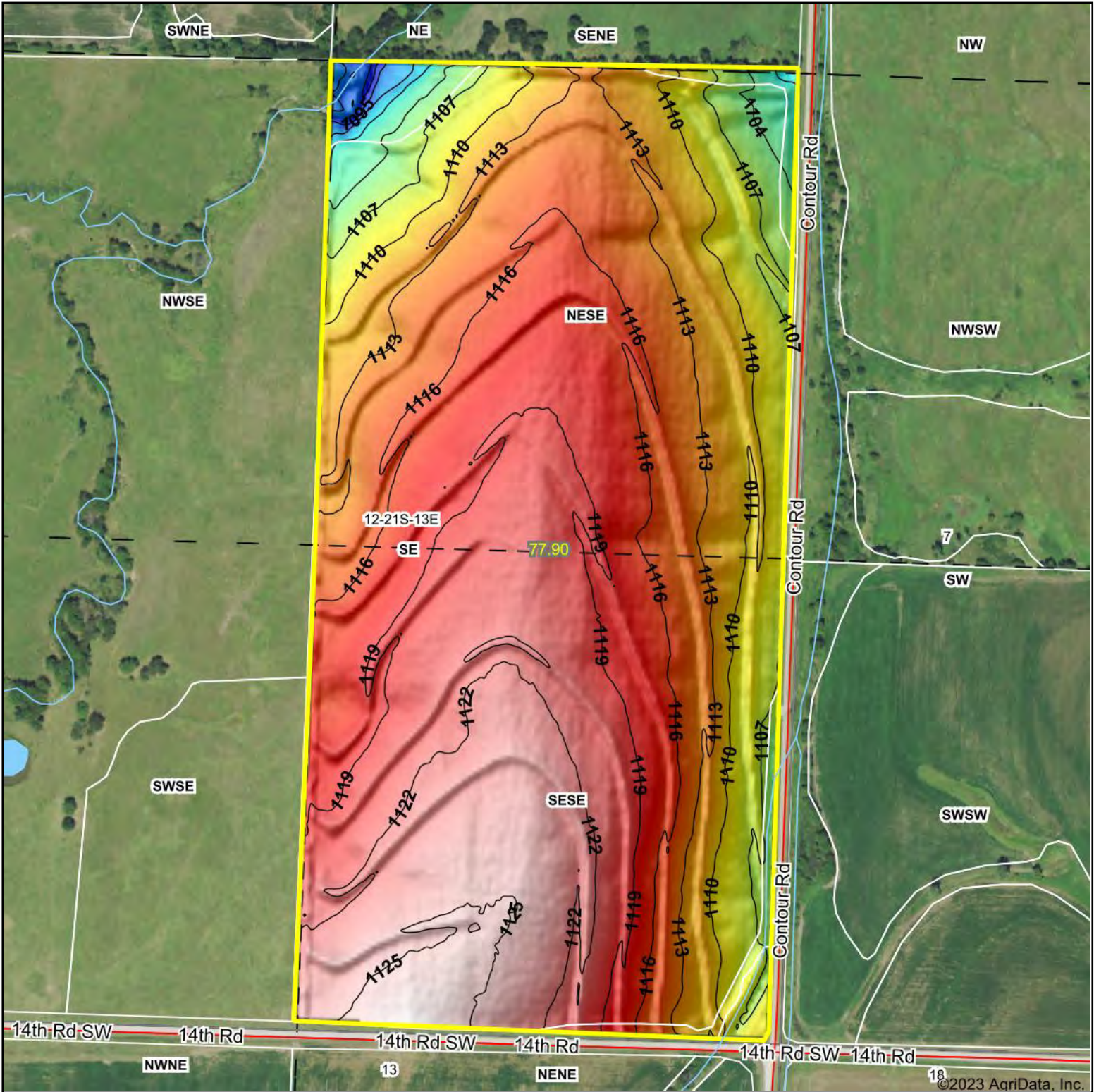


12-21S-13E
Coffey County
Kansas

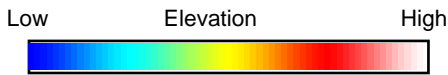


12/27/2023

Topography Hillshade



©2023 AgriData, Inc.



Source: USGS 3 meter dem



Interval(ft): 3

Min: 1,091.0

Max: 1,126.6

Range: 35.6

Average: 1,115.6

Standard Deviation: 5.94 ft



12/27/2023

12-21S-13E
Coffey County
Kansas

Boundary Center: 38° 13' 57.09, -95° 55' 26.84



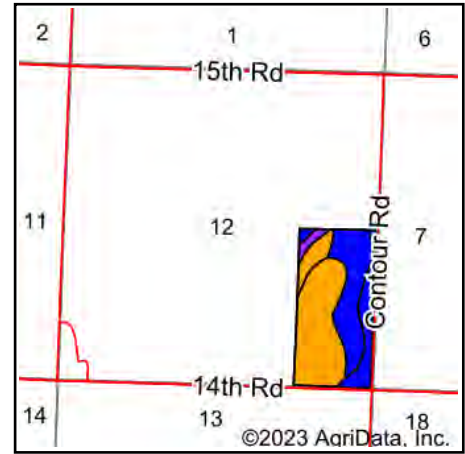
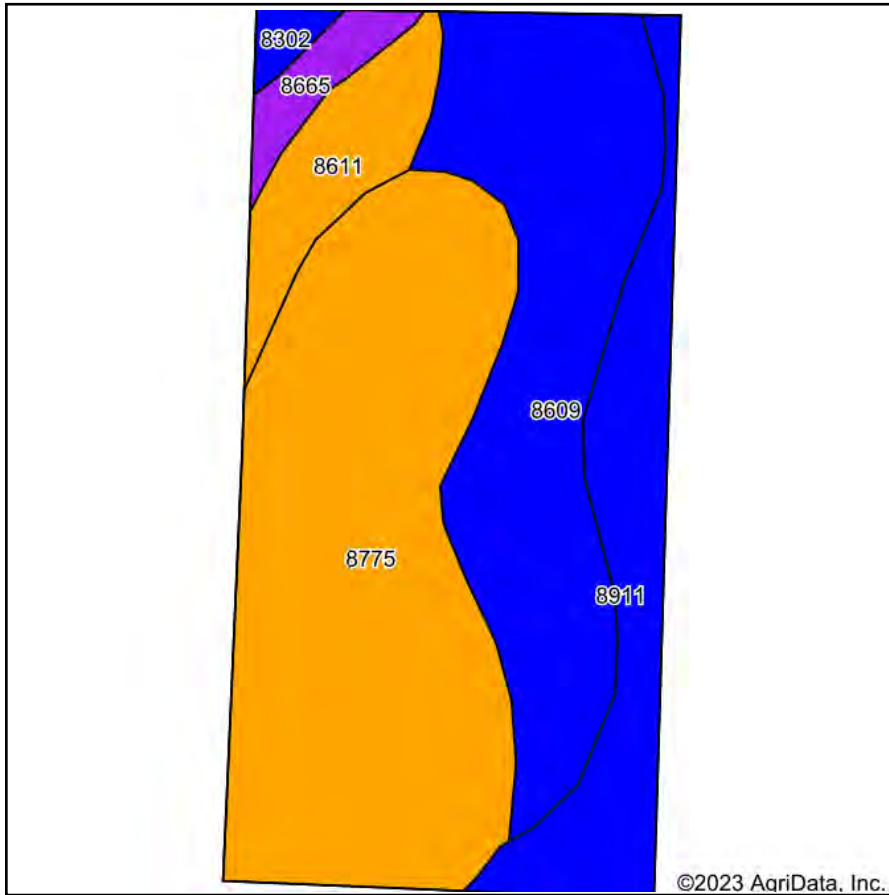
Maps Provided By:



© AgriData, Inc. 2023 www.AgriDataInc.com

Field borders provided by Farm Service Agency as of 5/21/2008.

Soils Map



State: **Kansas**
 County: **Coffey**
 Location: **12-21S-13E**
 Township: **Pleasant**
 Acres: **77.9**
 Date: **12/27/2023**



Soils data provided by USDA and NRCS.

Area Symbol: KS031, Soil Area Version: 21

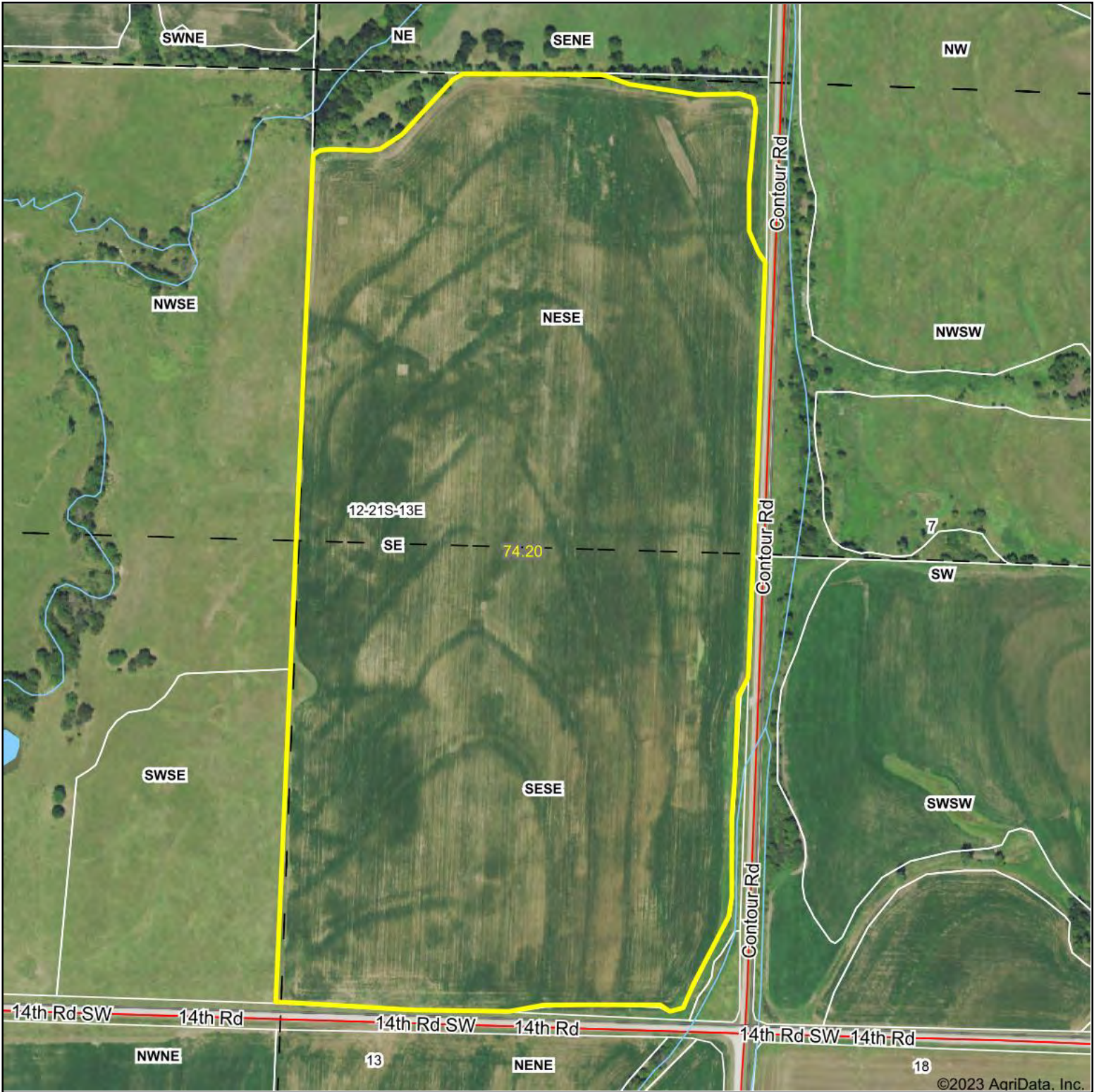
Code	Soil Description	Acres	Percent of field	Non-Irr Class Legend	Non-Irr Class *c	Alfalfa hay Tons	Grain sorghum Bu	Improved bermudagrass AUM	Soybeans Bu	Tall fescue AUM	Winter wheat Bu	*n NCCPI Soybeans
8775	Kenoma silt loam, 1 to 3 percent slopes	34.98	44.9%		IIIe							59
8609	Aliceville silty clay loam, 1 to 3 percent slopes	23.33	29.9%		Ile							49
8911	Summit silty clay loam, 1 to 3 percent slopes	11.13	14.3%		Ile							60
8611	Apperson-Eram silty clay loams, 1 to 3 percent slopes	5.48	7.0%		IIIe	3	46	6	25	2	28	39
8665	Clareson-Shidler complex, 1 to 8 percent slopes	2.14	2.7%		VIe							27
8302	Verdigris silt loam, 0 to 1 percent slopes, occasionally flooded	0.84	1.1%		IIw							75
Weighted Average						2.63	0.2	3.2	0.4	1.8	0.1	*n 54

*n: The aggregation method is "Weighted Average using all components"

*c: Using Capabilities Class Dominant Condition Aggregation Method

Soils data provided by USDA and NRCS.

Aerial Map



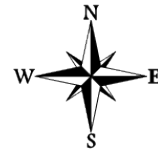
©2023 AgriData, Inc.



Boundary Center: 38° 13' 57.08, -95° 55' 26.83



12-21S-13E
Coffey County
Kansas



Maps Provided By:

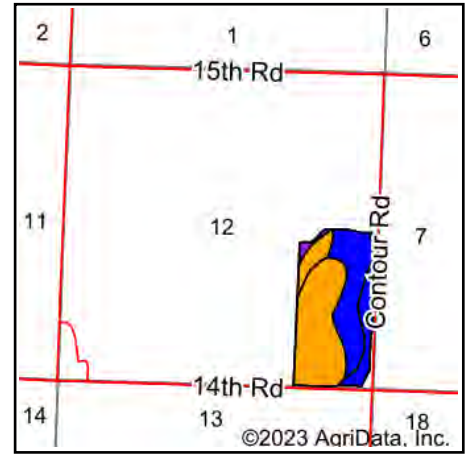
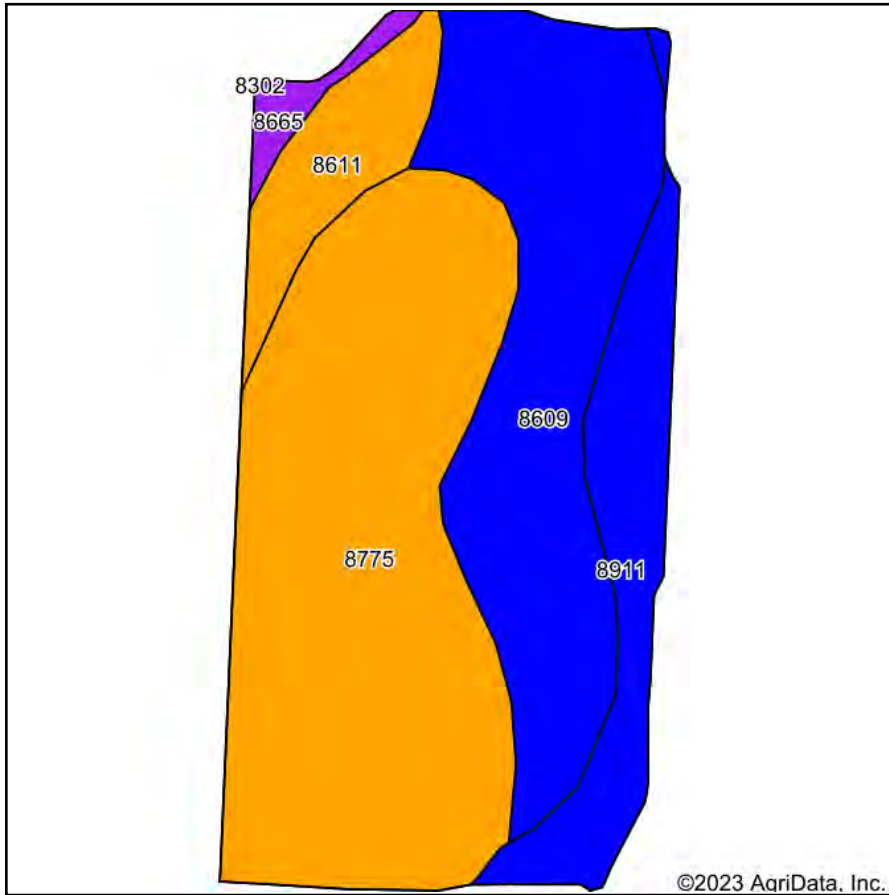


© AgriData, Inc. 2023 www.AgriDataInc.com

12/27/2023

Field borders provided by Farm Service Agency as of 5/21/2008.

Soils Map



State: **Kansas**
 County: **Coffey**
 Location: **12-21S-13E**
 Township: **Pleasant**
 Acres: **74.2**
 Date: **12/27/2023**



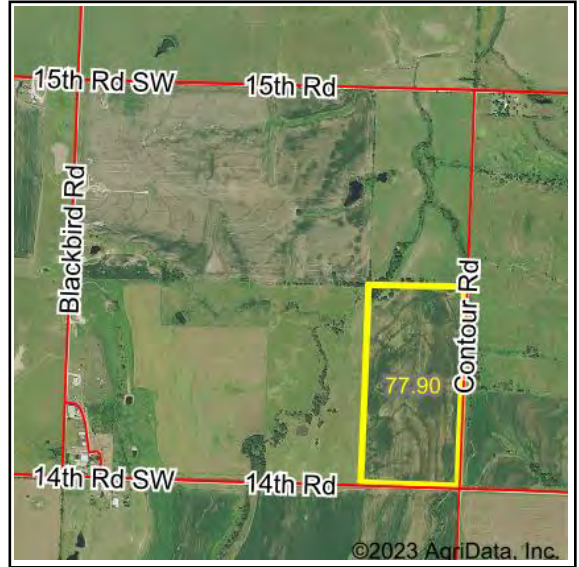
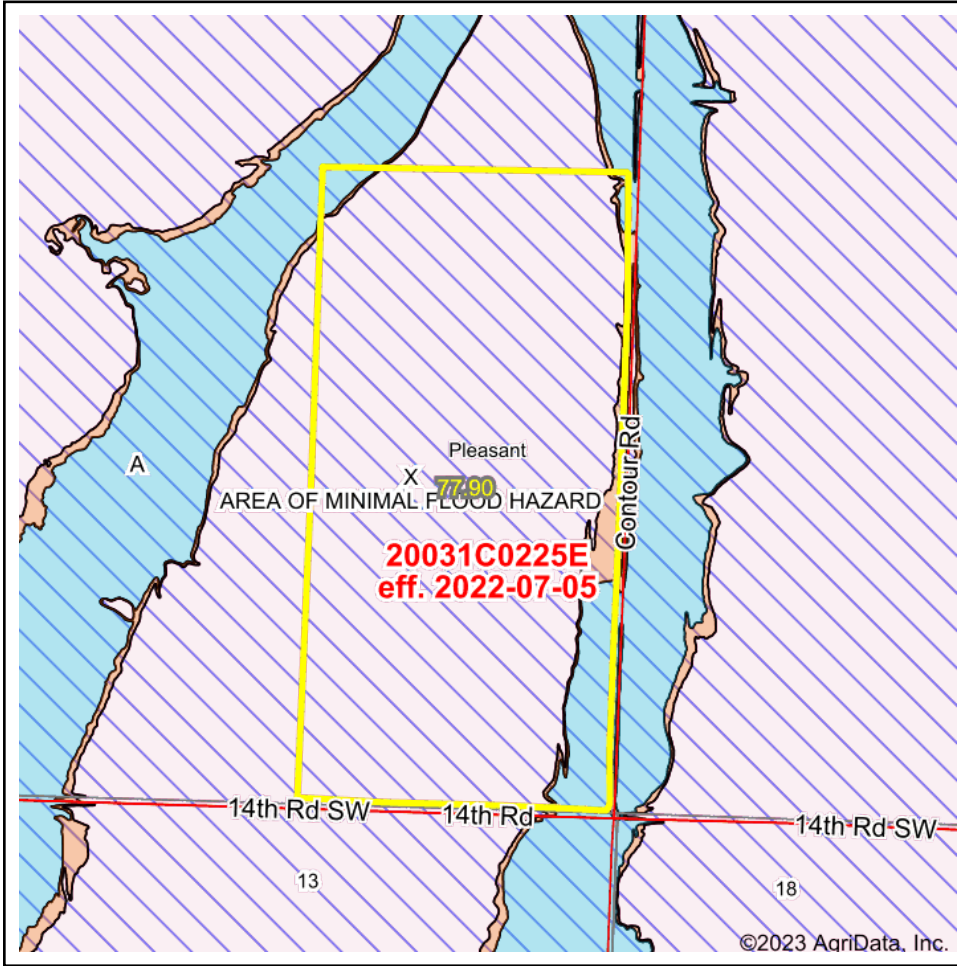
Soils data provided by USDA and NRCS.

Area Symbol: KS031, Soil Area Version: 21

Code	Soil Description	Acres	Percent of field	Non-Irr Class Legend	Non-Irr Class *c	Alfalfa hay Tons	Grain sorghum Bu	Improved bermudagrass AUM	Soybeans Bu	Tall fescue AUM	Winter wheat Bu	*n NCCPI Soybeans	
8775	Kenoma silt loam, 1 to 3 percent slopes	35.15	47.4%		IIIe							59	
8609	Aliceville silty clay loam, 1 to 3 percent slopes	23.02	31.0%		Ile							49	
8911	Summit silty clay loam, 1 to 3 percent slopes	9.22	12.4%		Ile							60	
8611	Apperson-Eram silty clay loams, 1 to 3 percent slopes	5.49	7.4%		IIIe	3	46	6	25	2	28	39	
8665	Clareson-Shidler complex, 1 to 8 percent slopes	1.32	1.8%		Vle							27	
Weighted Average						2.62	0.2	3.4	0.4	1.8	0.1	2.1	*n 54

*n: The aggregation method is "Weighted Average using all components"
 *c: Using Capabilities Class Dominant Condition Aggregation Method
 Soils data provided by USDA and NRCS.

FEMA Report



Map Center: 38° 13' 57.26, -95° 55' 25.62
 State: KS Acres: 77.9
 County: Coffey Date: 12/27/2023
 Location: 12-21S-13E
 Township: Pleasant



Name	Number	County	NFIP Participation	Acres	Percent
COFFEY COUNTY	200062	Coffey	None	77.9	100%
Total				77.9	100%

Map Change	Date	Case No.	Acres	Percent
No			0	0%

Zone	SubType	Description	Acres	Percent
X	AREA OF MINIMAL FLOOD HAZARD	Outside 500-year Floodplain	71.33	91.6%
A		100-year Floodplain	4.62	5.9%
X	0.2 PCT ANNUAL CHANCE FLOOD HAZARD	500-year floodplain	1.95	2.5%
Total			77.90	100%

Panel	Effective Date	Acres	Percent
20031C0225E	7/5/2022	77.9	100%
Total		77.9	100%