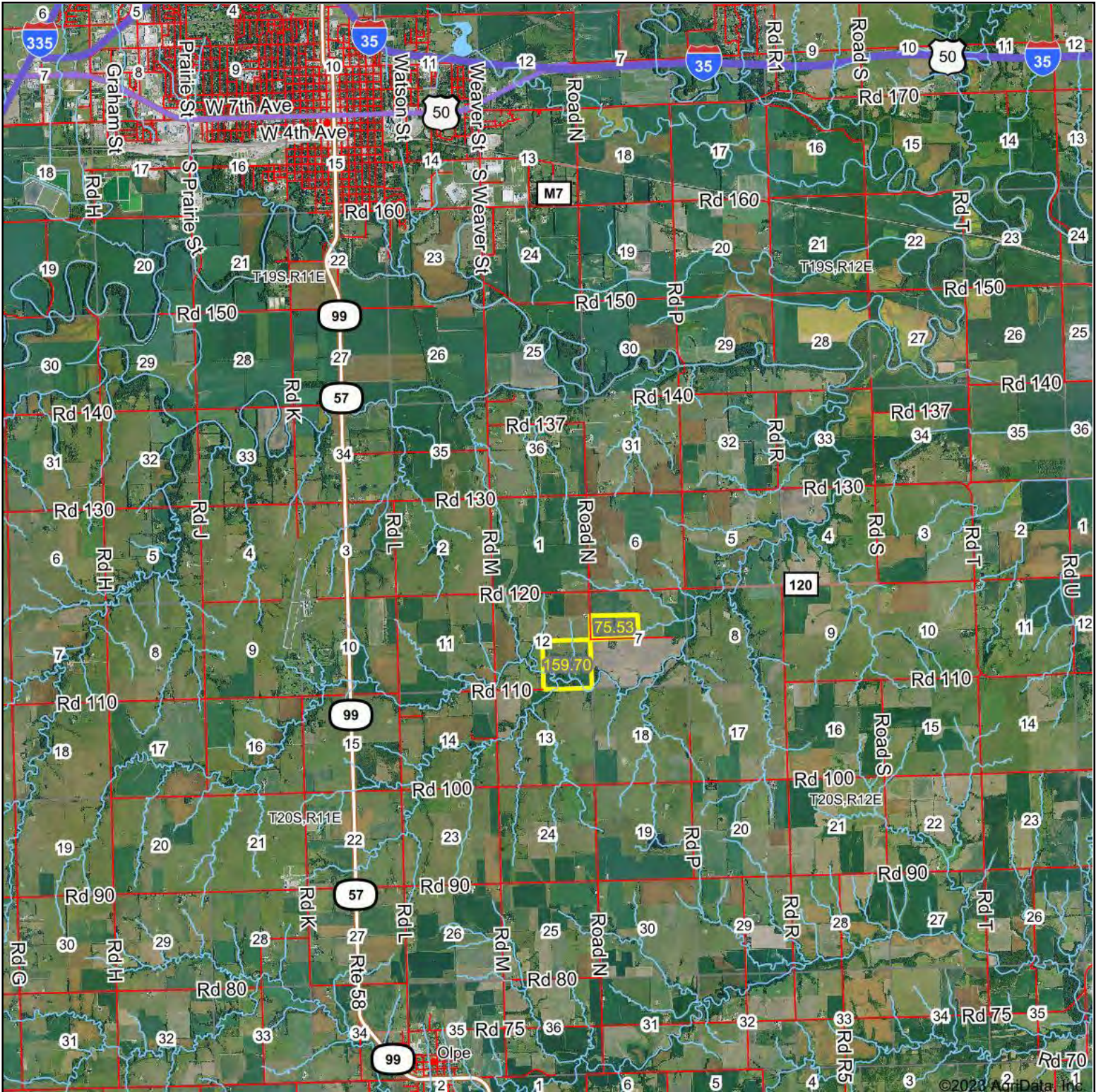
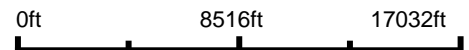


Aerial Map



Boundary Center: 38° 19' 23.86, -96° 8' 3.84



12-20S-11E
Lyon County
Kansas

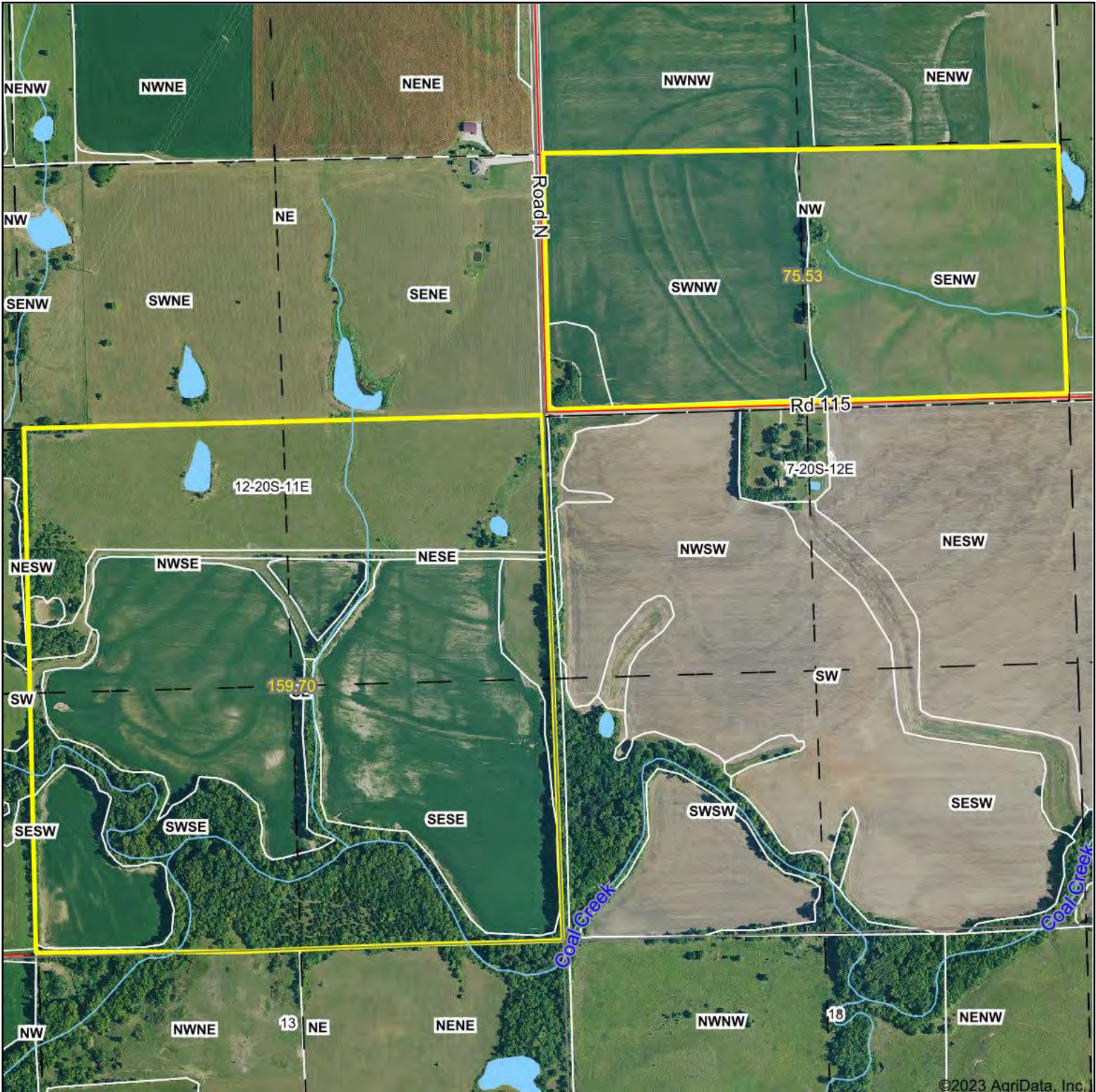


Maps Provided By:
 **surety**
CUSTOMIZED ONLINE MAPPING
© AgriData, Inc. 2023 www.AgridataInc.com

12/26/2023

Field borders provided by Farm Service Agency as of 5/21/2008.

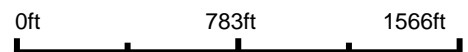
Aerial Map



©2023 AgriData, Inc.



Map Center: 38° 19' 23.86, -96° 8' 3.84



12-20S-11E
Lyon County
Kansas



Maps Provided By:

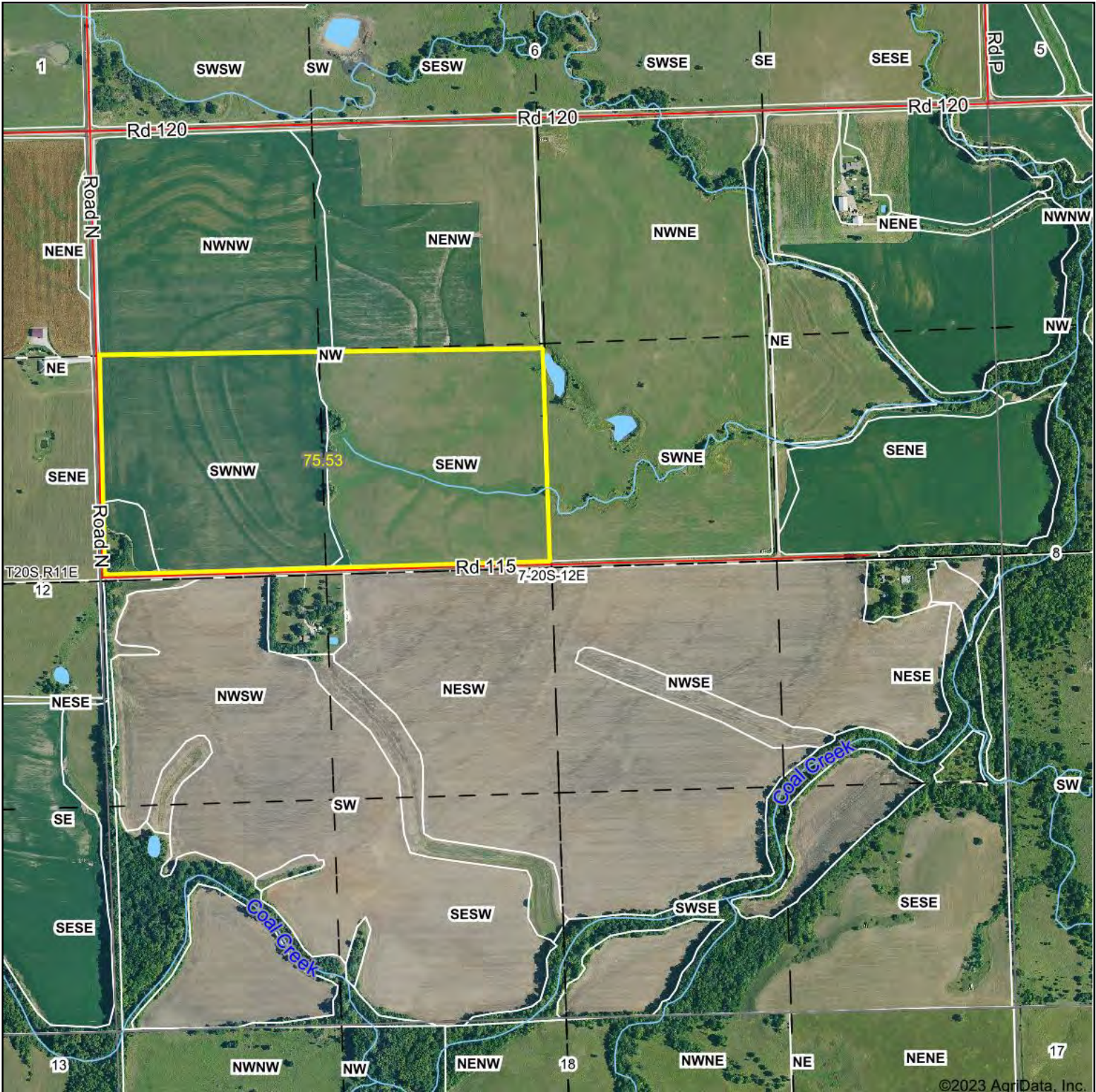


© AgriData, Inc. 2023 www.AgriDataInc.com

12/26/2023

Field borders provided by Farm Service Agency as of 5/21/2008.

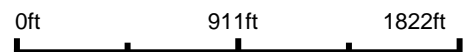
Aerial Map



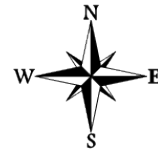
©2023 AgriData, Inc.



Boundary Center: 38° 19' 37.09, -96° 7' 47.14



7-20S-12E
Lyon County
Kansas

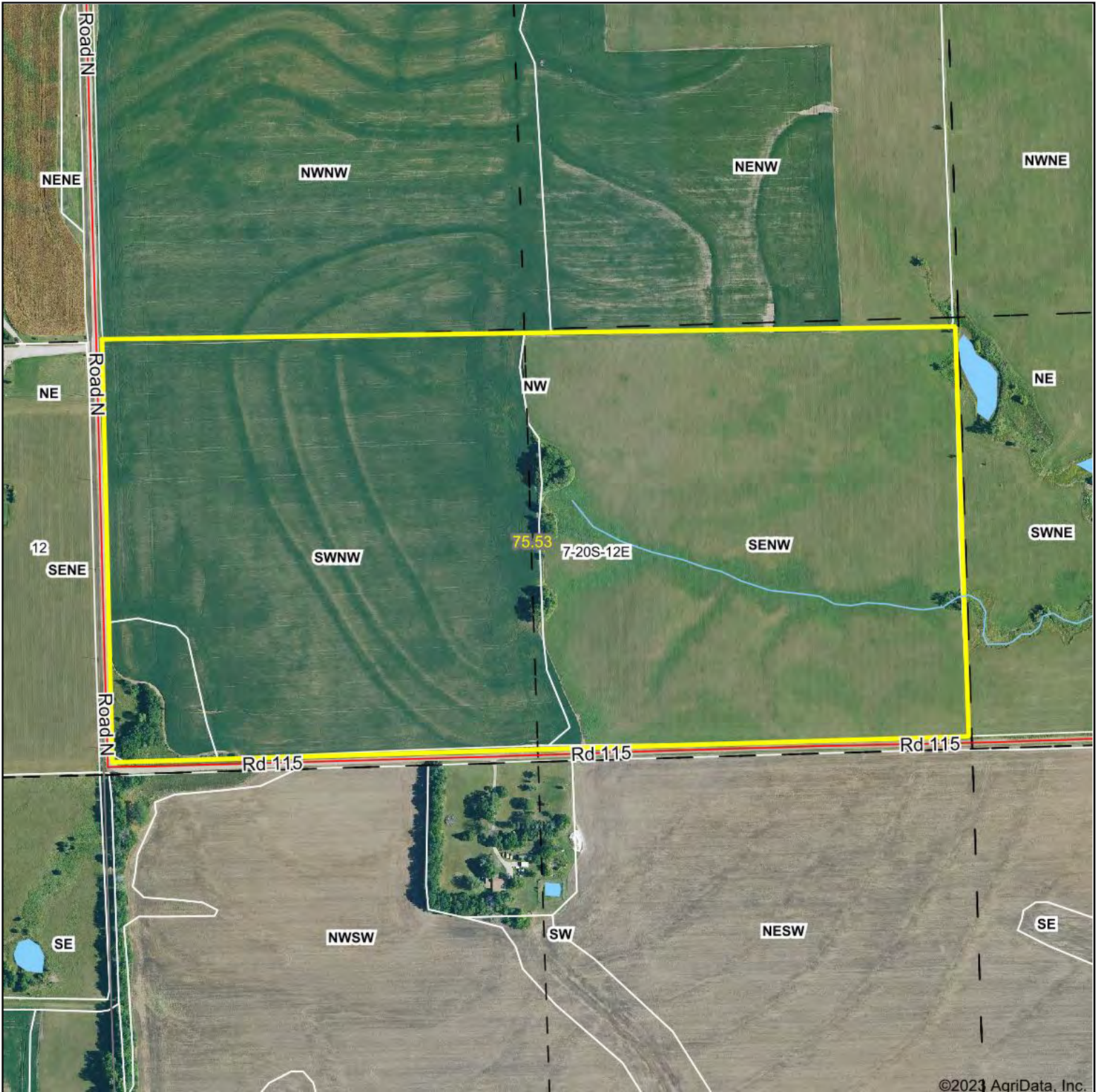


Maps Provided By:
surety
CUSTOMIZED ONLINE MAPPING
© AgriData, Inc. 2023 www.AgriDataInc.com

12/26/2023

Field borders provided by Farm Service Agency as of 5/21/2008.

Aerial Map



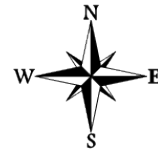
©2023 AgriData, Inc.



Boundary Center: 38° 19' 37.09, -96° 7' 47.14



7-20S-12E
Lyon County
Kansas

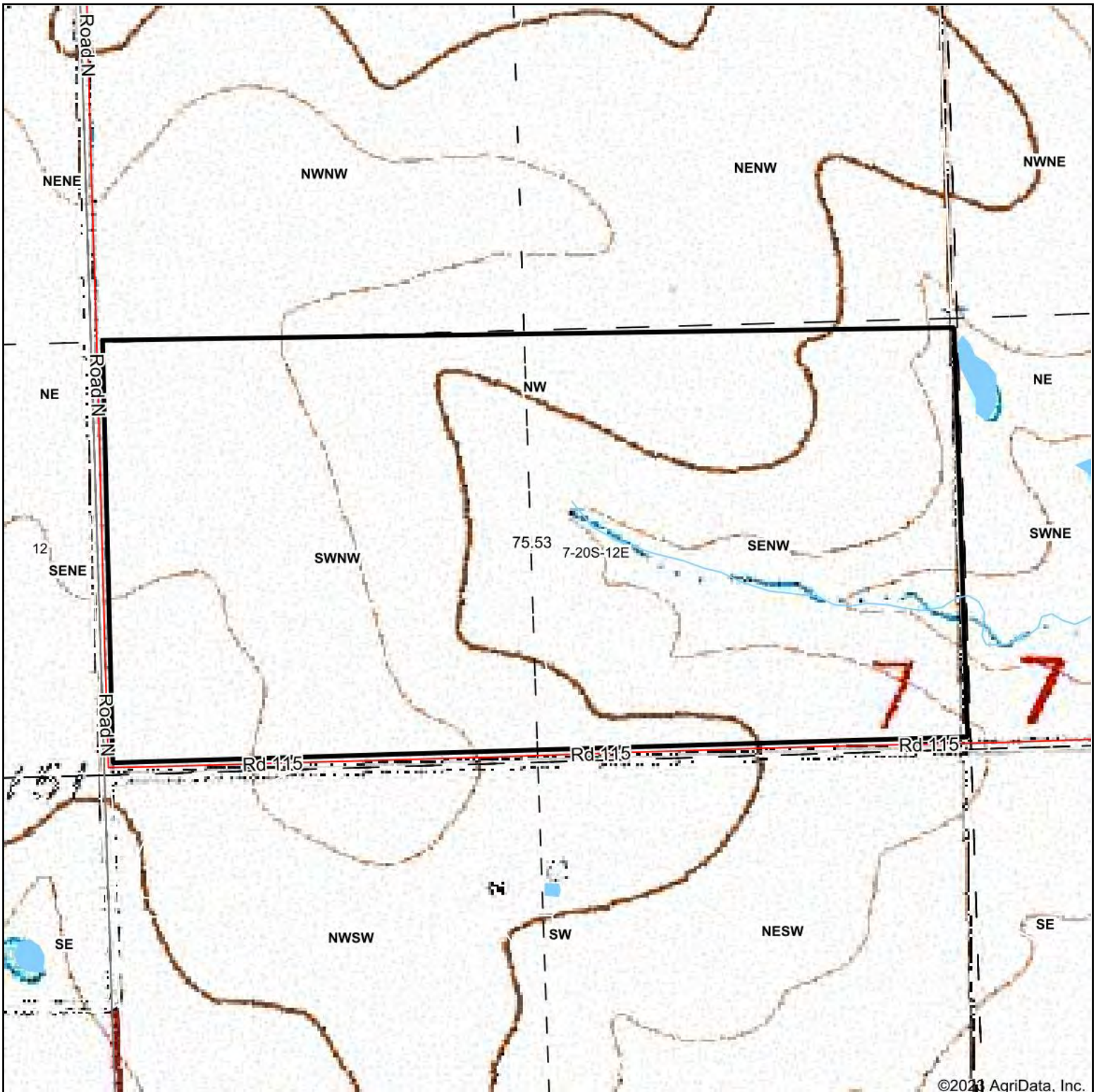


Maps Provided By:
surety
CUSTOMIZED ONLINE MAPPING
© AgriData, Inc. 2023 www.AgriDataInc.com

12/26/2023

Field borders provided by Farm Service Agency as of 5/21/2008.

Topography Map



©2023 AgriData, Inc.



Map Center: 38° 19' 36.78, -96° 7' 46.64



7-20S-12E
Lyon County
Kansas



12/26/2023



© AgriData, Inc. 2023 www.AgriDataInc.com

Topography Contours



©2023 AgriData, Inc.



Maps Provided By:



© AgriData, Inc. 2023 www.AgriDataInc.com

Field borders provided by Farm Service Agency as of 5/21/2008.

Source: USGS 3 meter dem

Interval(ft): 3.0

Min: 1,127.5

Max: 1,168.3

Range: 40.8

Average: 1,152.8

Standard Deviation: 8.69 ft

0ft 447ft 895ft

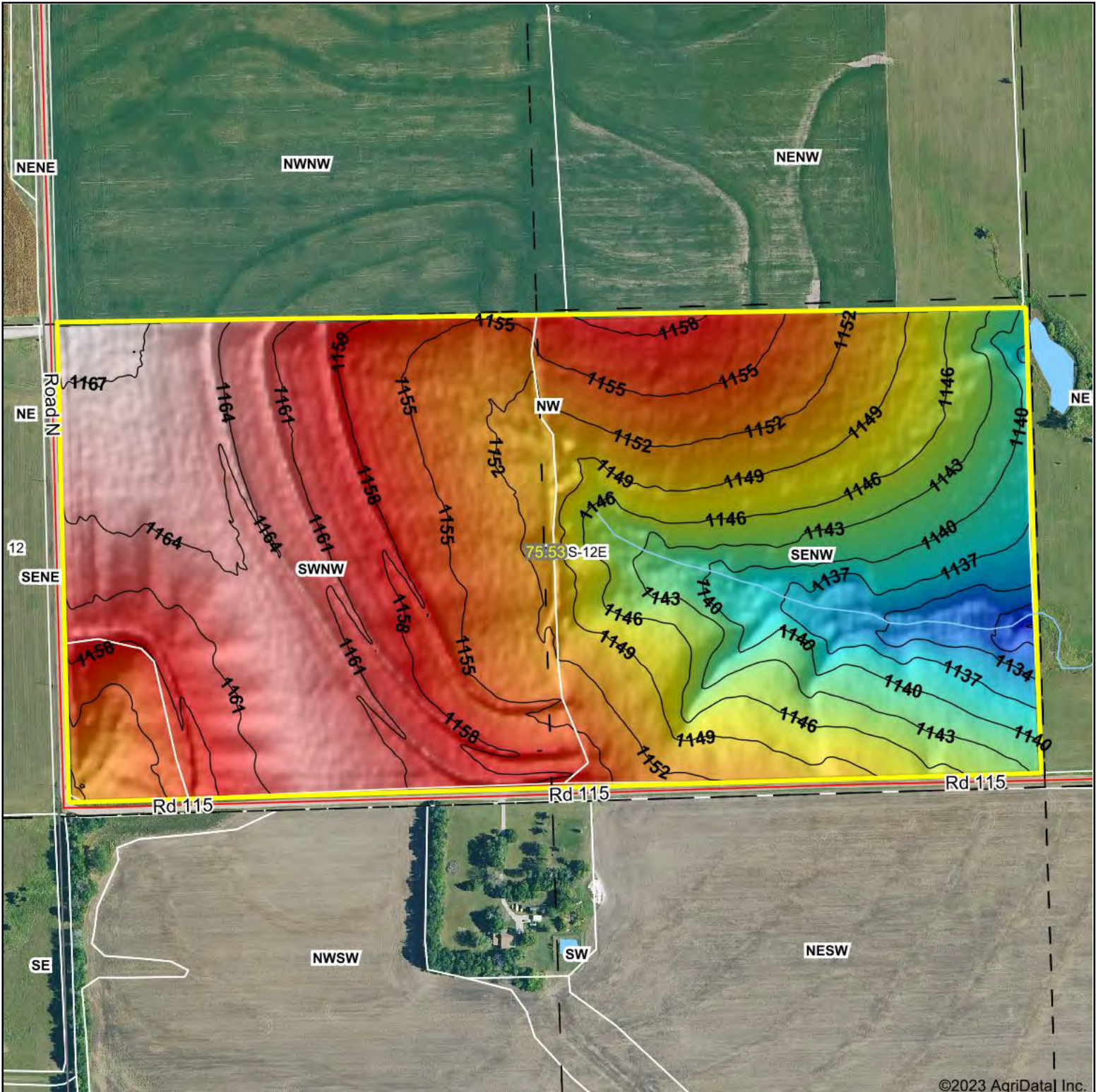


12/26/2023

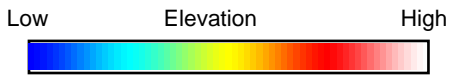
7-20S-12E
Lyon County
Kansas

Boundary Center: 38° 19' 37.09, -96° 7' 47.14

Topography Hillshade



©2023 AgriData Inc.



Maps Provided By:



© AgriData, Inc. 2023 www.AgriDataInc.com

Field borders provided by Farm Service Agency as of 5/21/2008.

Source: USGS 3 meter dem

Interval(ft): 3

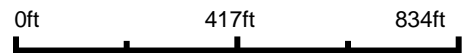
Min: 1,127.5

Max: 1,168.3

Range: 40.8

Average: 1,152.8

Standard Deviation: 8.69 ft

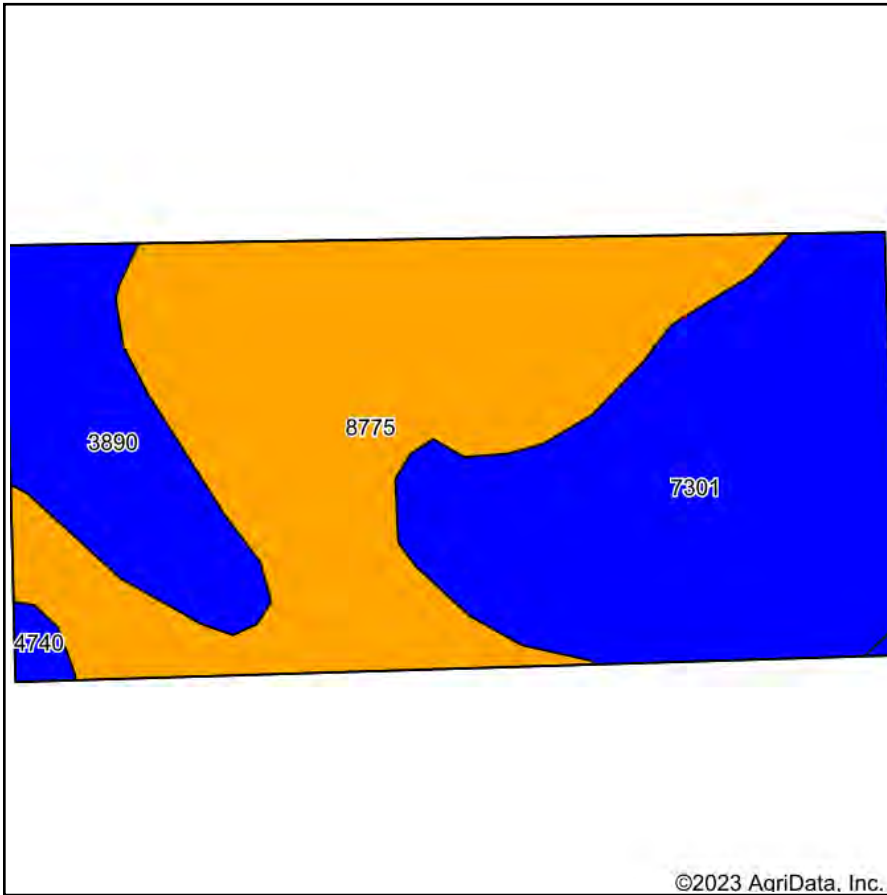


12/26/2023

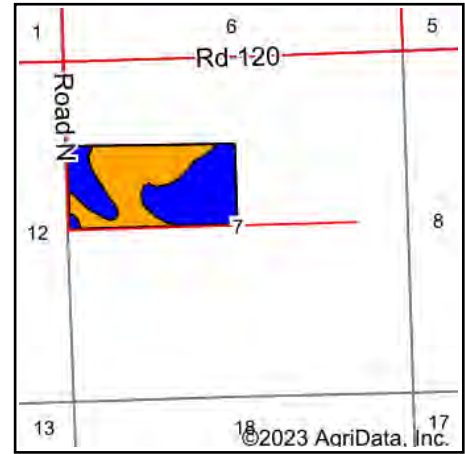
7-20S-12E
Lyon County
Kansas

Boundary Center: 38° 19' 37.09, -96° 7' 47.14

Soils Map



Soils data provided by USDA and NRCS.



State: **Kansas**
 County: **Lyon**
 Location: **7-20S-12E**
 Township: **Emporia**
 Acres: **75.53**
 Date: **12/26/2023**



Maps Provided By:



© AgriData, Inc. 2023

www.AgriDataInc.com



Area Symbol: KS111, Soil Area Version: 22

Code	Soil Description	Acres	Percent of field	Non-Irr Class Legend	Non-Irr Class *c	Irr Class *c	*n NCCPI Soybeans
8775	Kenoma silt loam, 1 to 3 percent slopes	35.23	46.6%		IIIe		59
7301	Martin silty clay loam, 1 to 3 percent slopes	28.71	38.0%		Ile	Ile	49
3890	Ladysmith silty clay loam, 0 to 1 percent slopes	10.77	14.3%		IIs	IIs	51
4740	Labette silty clay loam, 1 to 3 percent slopes	0.82	1.1%		Ile	Ile	43
Weighted Average					2.47	*-	*n 53.9

*n: The aggregation method is "Weighted Average using all components"

*c: Using Capabilities Class Dominant Condition Aggregation Method

*- Irr Class weighted average cannot be calculated on the current soils data due to missing data.

Soils data provided by USDA and NRCS.

Aerial Map



©2023 AgriData, Inc.



Boundary Center: 38° 19' 37.11, -96° 7' 54.69



7-20S-12E
Lyon County
Kansas

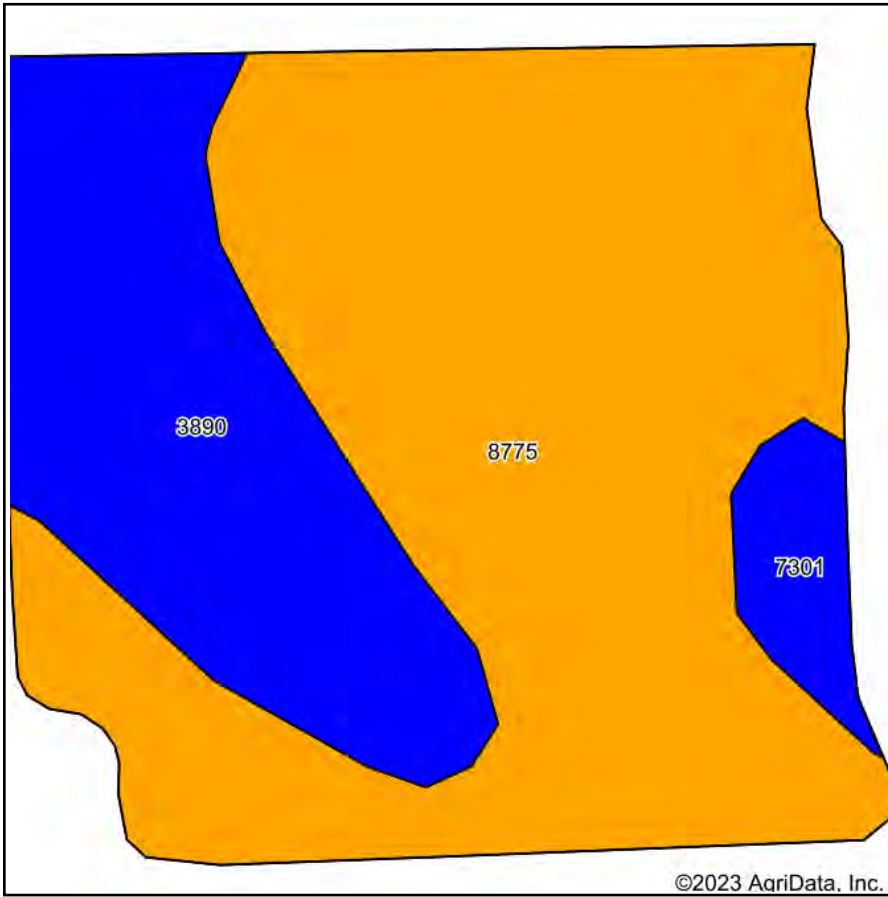


Maps Provided By:
 **surety**
CUSTOMIZED ONLINE MAPPING
© AgriData, Inc. 2023 www.AgriDataInc.com

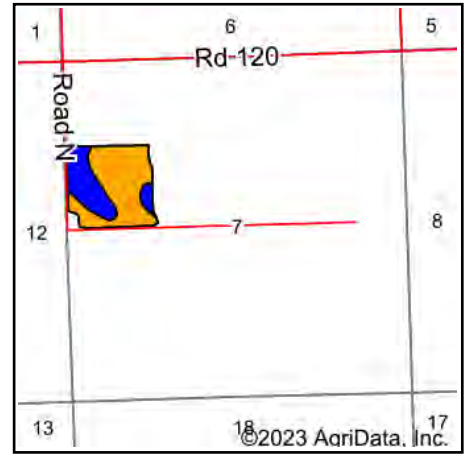
12/27/2023

Field borders provided by Farm Service Agency as of 5/21/2008.

Soils Map



Soils data provided by USDA and NRCS.



State: **Kansas**
 County: **Lyon**
 Location: **7-20S-12E**
 Township: **Emporia**
 Acres: **37.02**
 Date: **12/27/2023**



Maps Provided By:



© AgriData, Inc. 2023

www.AgriDataInc.com



Area Symbol: KS111, Soil Area Version: 22

Code	Soil Description	Acres	Percent of field	Non-Irr Class Legend	Non-Irr Class *c	Irr Class *c	*n NCCPI Soybeans
8775	Kenoma silt loam, 1 to 3 percent slopes	24.76	66.9%		IIIe		59
3890	Ladysmith silty clay loam, 0 to 1 percent slopes	10.68	28.8%		IIs	IIs	51
7301	Martin silty clay loam, 1 to 3 percent slopes	1.58	4.3%		Ile	Ile	49
Weighted Average					2.67	*-	*n 56.3

*n: The aggregation method is "Weighted Average using all components"

*c: Using Capabilities Class Dominant Condition Aggregation Method

*- Irr Class weighted average cannot be calculated on the current soils data due to missing data.

Soils data provided by USDA and NRCS.