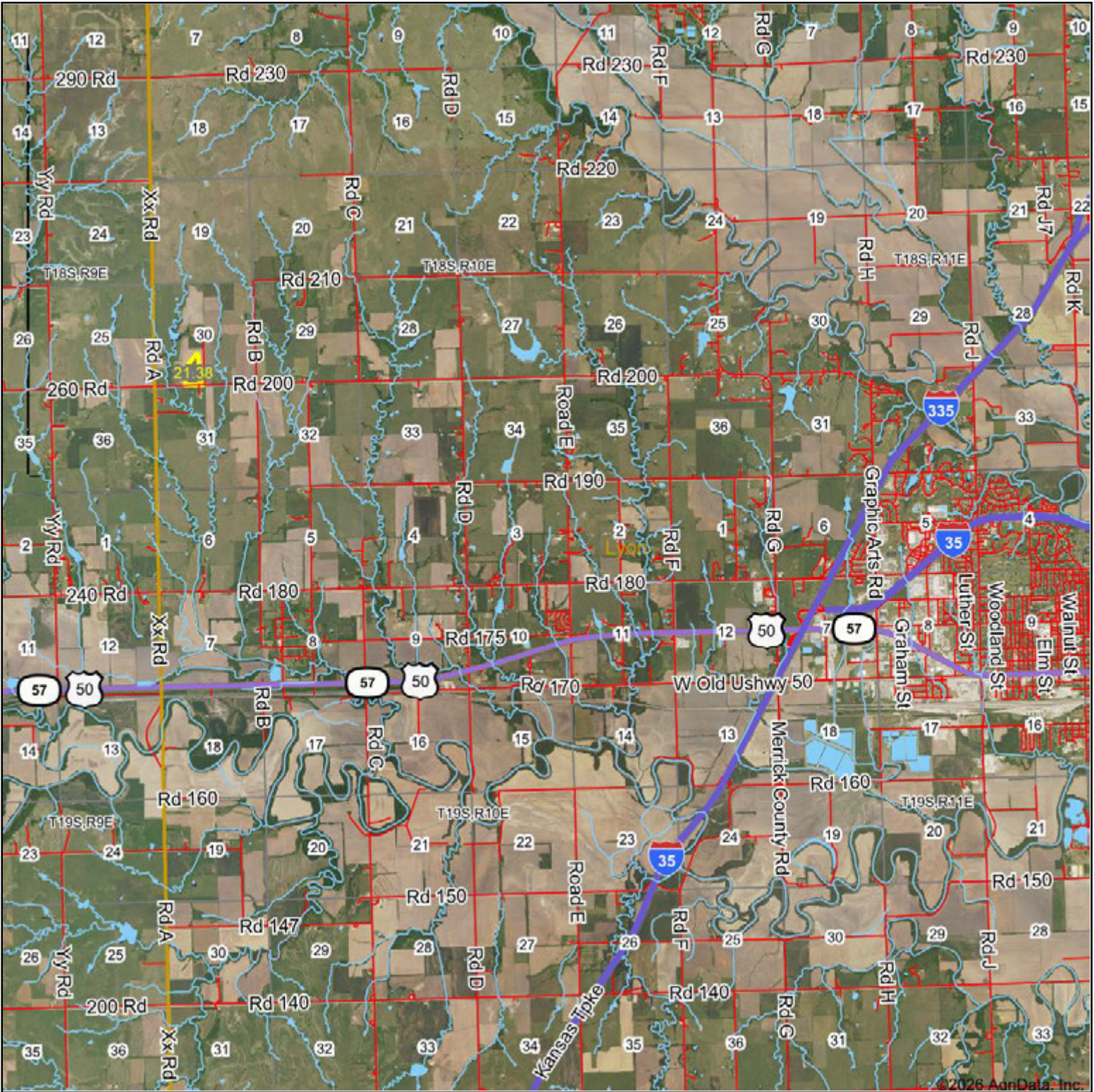


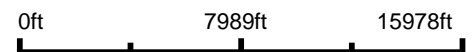
# Aerial Map



©2026 AgriData, Inc.



Boundary Center: 38° 27' 5.14, -96° 20' 49.93



**30-18S-10E**  
**Lyon County**  
**Kansas**



Maps Provided By  
 **surety**  
CUSTOMIZED ONLINE MAPPING  
© AgriData, Inc. 2025 www.AgriDataInc.com

4/3/2026

Field borders provided by Farm Service Agency as of 5/21/2008.

# Aerial Map



Boundary Center: 38° 27' 5.14, -96° 20' 49.93



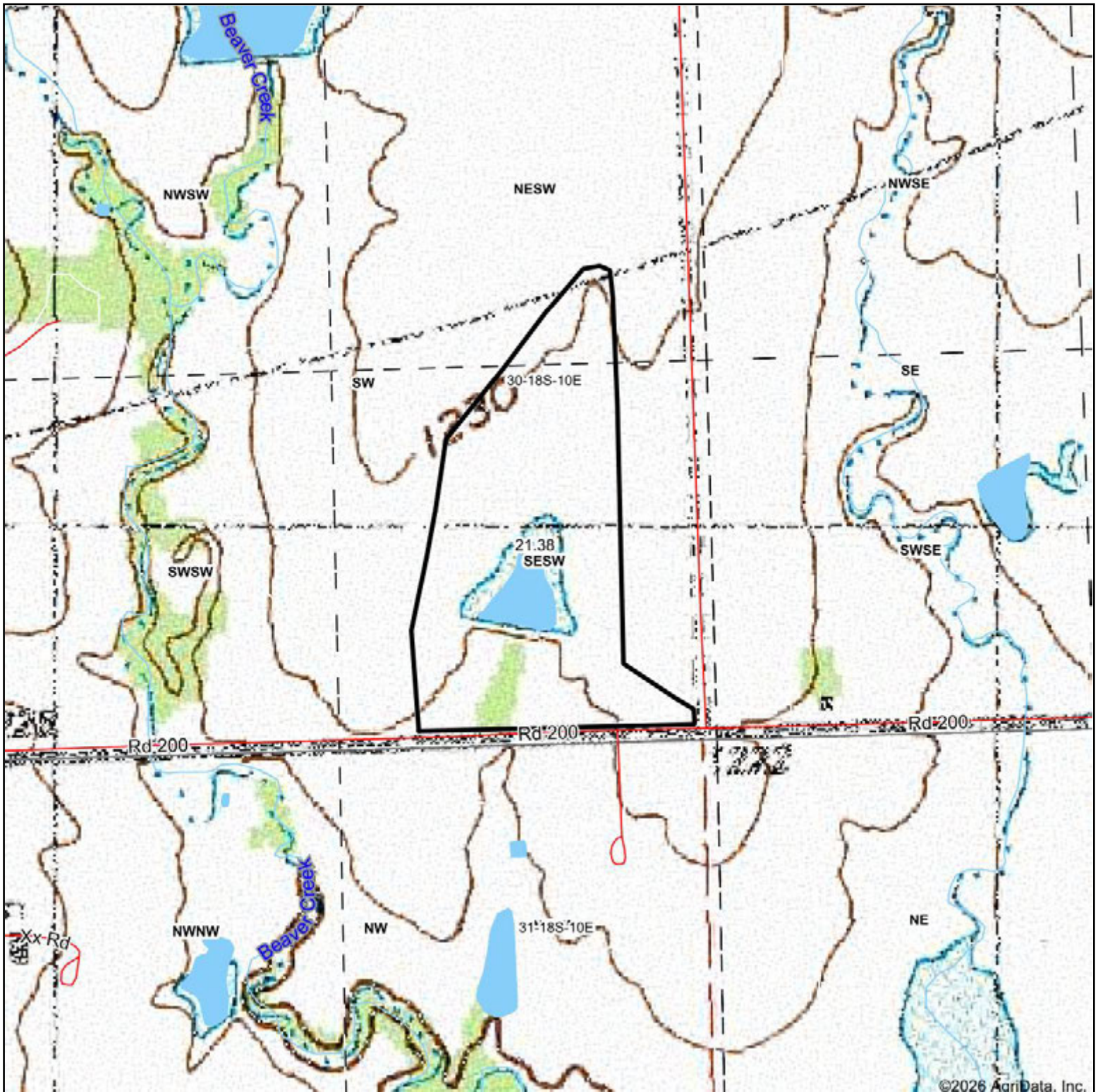
**30-18S-10E**  
**Lyon County**  
**Kansas**



Maps Provided By  
**surety**  
CUSTOMIZED ONLINE MAPPING  
© AgriData, Inc. 2025 www.AgriDataInc.com

4/3/2026

# Topography Map



Map Center: 38° 27' 3.39, -96° 20' 49.98



**30-18S-10E**  
**Lyon County**  
**Kansas**



4/3/2026



© AgriData, Inc. 2025 www.AgriDataInc.com

# Topography Contours

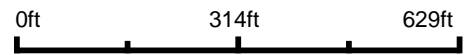


©2026 AgriData, Inc.



© AgriData, Inc. 2025 www.AgrIDataInc.com

Source: USGS 1 meter dem  
 Interval(ft): 2.0  
 Min: 1,208.9  
 Max: 1,233.0  
 Range: 24.1  
 Average: 1,221.4  
 Standard Deviation: 4.92 ft



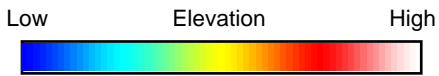
4/3/2026

**30-18S-10E**  
**Lyon County**  
**Kansas**

Boundary Center: 38° 27' 5.14, -96° 20' 49.93

Field borders provided by Farm Service Agency as of 5/21/2008.

# Topography Hillshade



© AgriData, Inc. 2025 www.AgriDataInc.com  
Field borders provided by Farm Service Agency as of 5/21/2008.

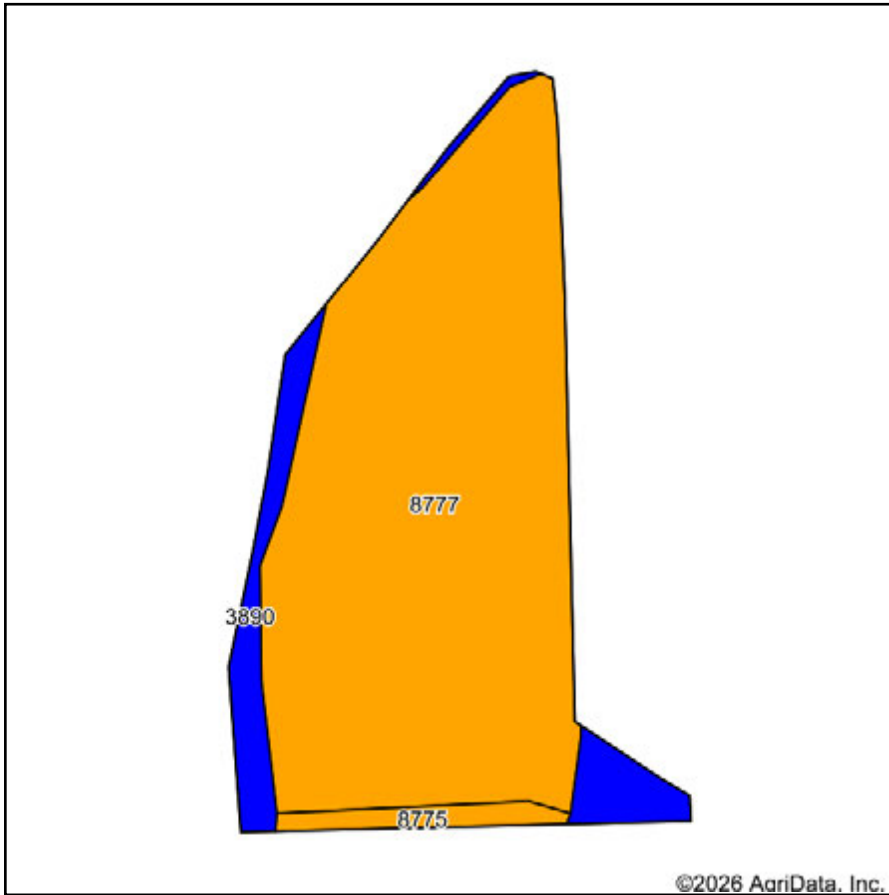
Source: USGS 1 meter dem  
Interval(ft): 2  
Min: 1,208.9  
Max: 1,233.0  
Range: 24.1  
Average: 1,221.4  
Standard Deviation: 4.92 ft



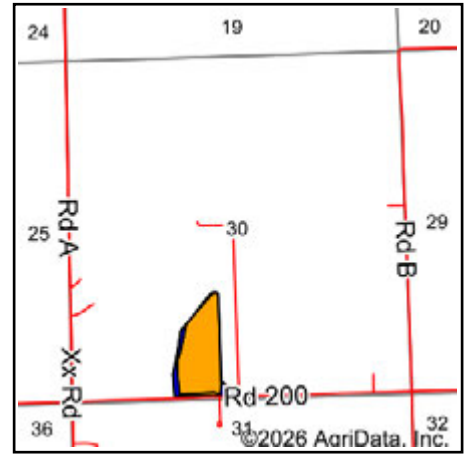
**30-18S-10E**  
**Lyon County**  
**Kansas**

Boundary Center: 38° 27' 5.14, -96° 20' 49.93

# Soils Map



Soils data provided by USDA and NRCS.



State: **Kansas**  
 County: **Lyon**  
 Location: **30-18S-10E**  
 Township: **Americus**  
 Acres: **21.38**  
 Date: **4/3/2026**



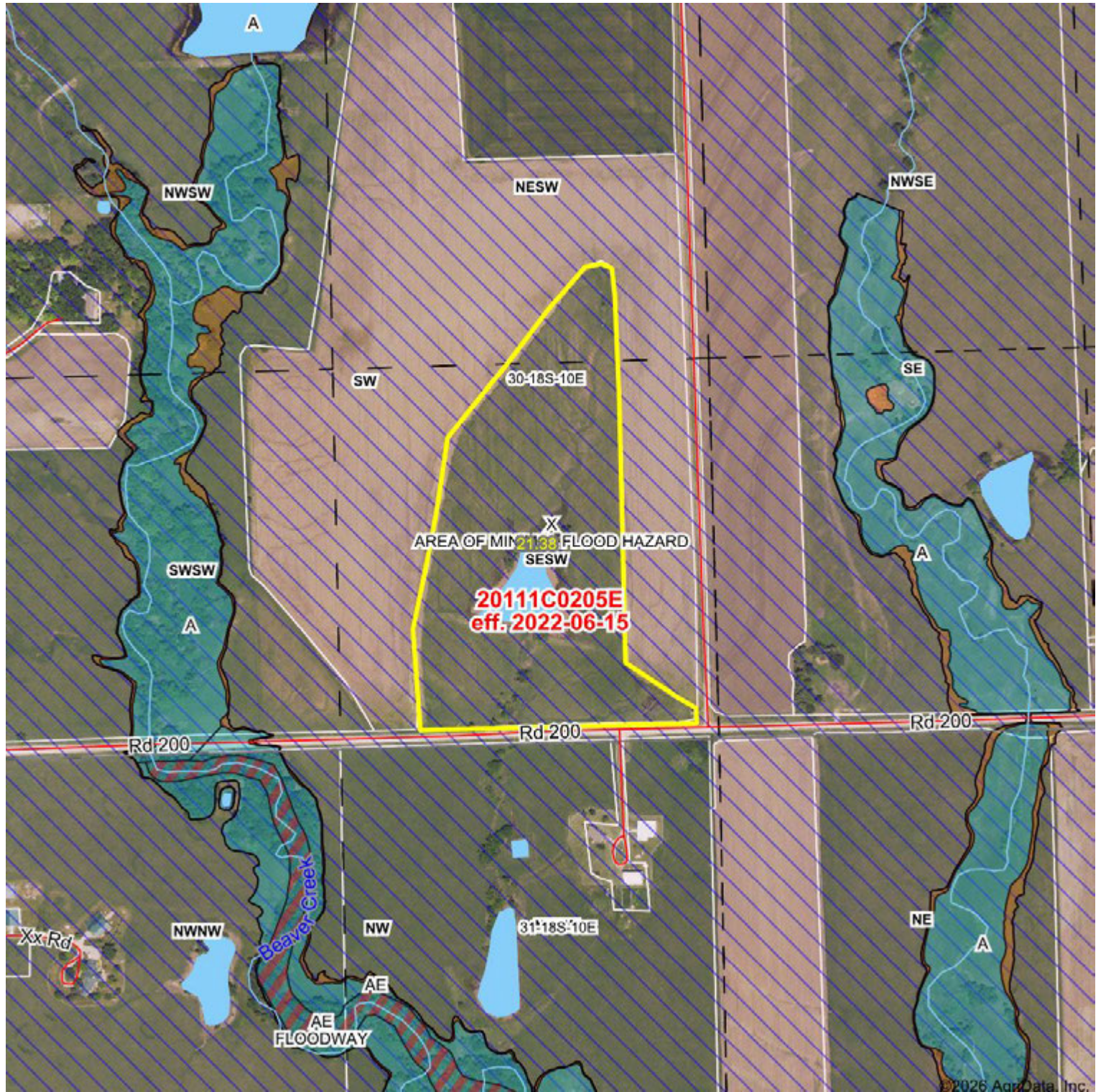
Area Symbol: KS111, Soil Area Version: 24

Code	Soil Description	Acres	Percent of field	Non-Irr Class Legend	Non-Irr Class *c	Irr Class *c	*n NCCPI Soybeans
8777	Kenoma silty clay loam, 1 to 3 percent slopes, eroded	18.51	86.6%		Ille		49
3890	Ladysmith silty clay loam, 0 to 1 percent slopes	2.25	10.5%		Ils	Ils	52
8775	Kenoma silt loam, 1 to 3 percent slopes	0.62	2.9%		Ille		59
<b>Weighted Average</b>					<b>2.89</b>	<b>*-</b>	<b>*n 49.6</b>

\*n: The aggregation method is "Weighted Average using all components"

\*c: Using Capabilities Class Dominant Condition Aggregation Method

\*- Irr Class weighted average cannot be calculated on the current soils data due to missing data.



Map will display available Flood Zone(s), FIRM Panel(s), LOMC and Communities.

Date:                      Mapped Acres:                      Actual Acres:



Maps Provided By  
  
CUSTOMIZED ONLINE MAPPING  
© AgriData, Inc. 2025                      www.AgrIDataInc.com

