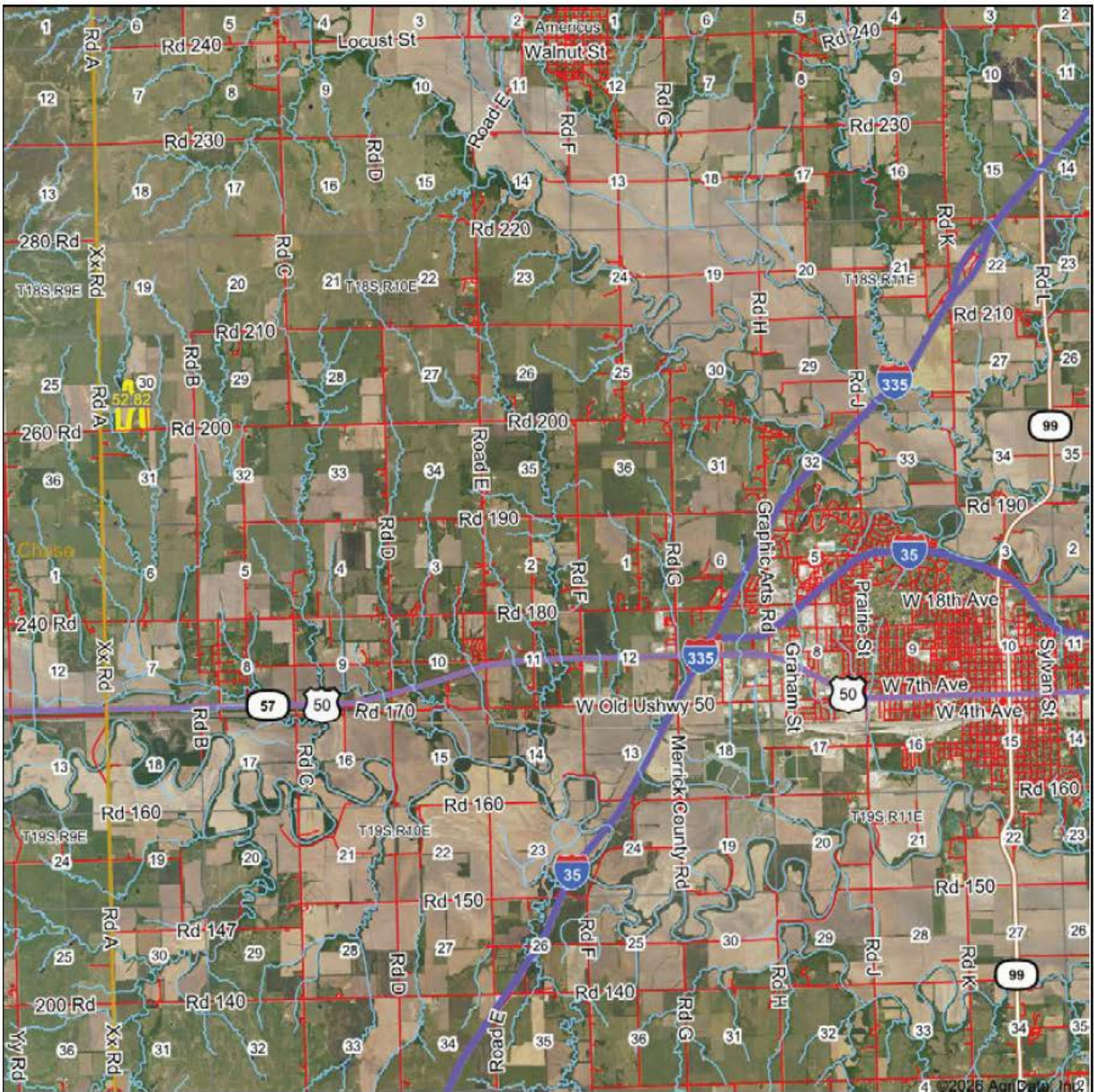


Aerial Map



Boundary Center: 38° 27' 10.08, -96° 20' 53.25



30-18S-10E
Lyon County
Kansas

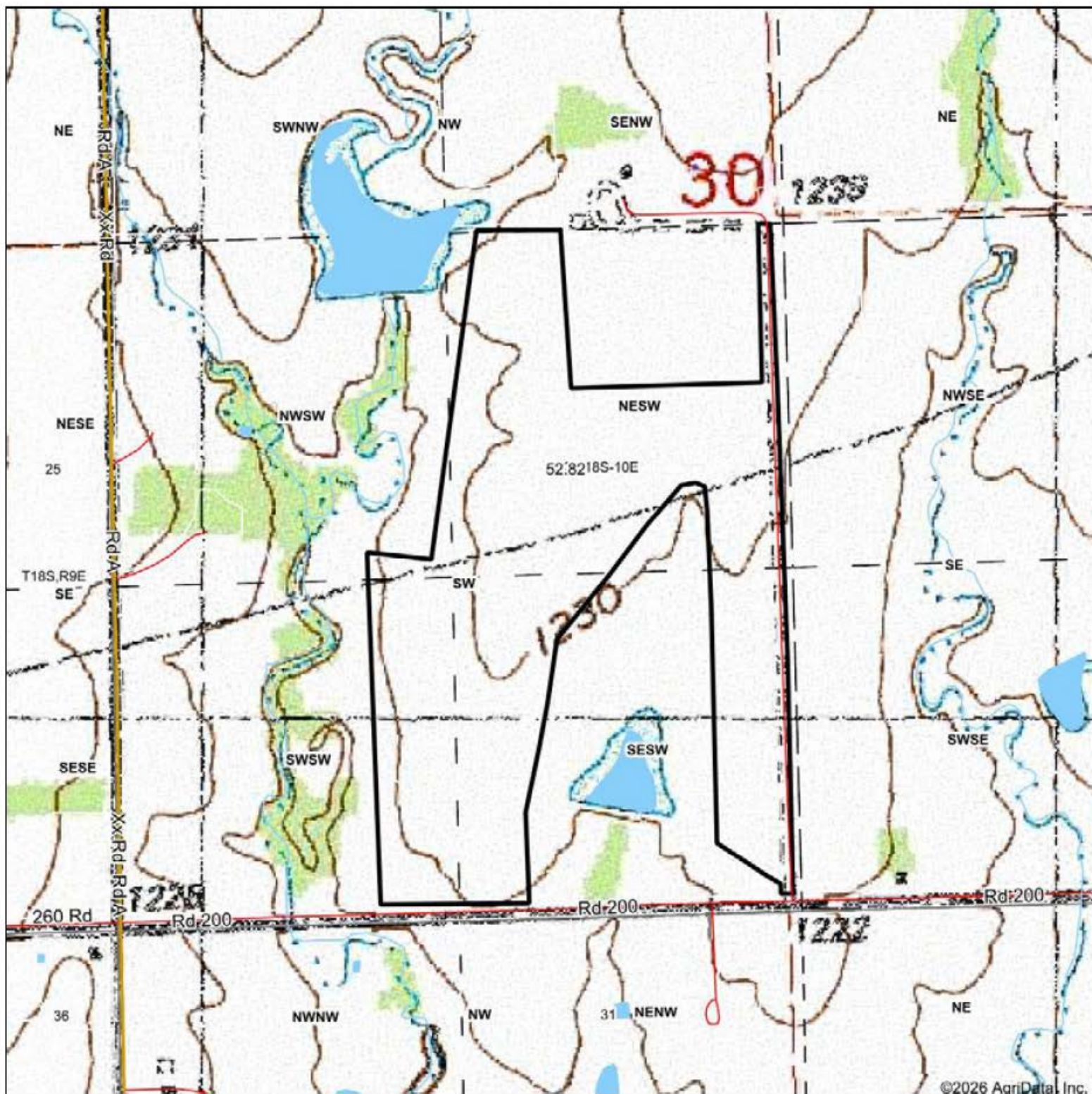


Maps Provided by
surety
CUSTOMIZED ONLINE MAPPING
© AgriData, Inc. 2025. www.AgridataInc.com

4/3/2026

Field borders provided by Farm Service Agency as of 5/21/2008.

Topography Map



Map Center: 38° 27' 10.6, -96° 20' 54.49



30-18S-10E
Lyon County
Kansas



© AgriData, Inc. 2025 www.AgriDataInc.com

Topography Contours



©2026 AgriData, Inc.



© AgriData, Inc. 2025 www.AgridataInc.com
Field borders provided by Farm Service Agency as of 5/21/2009

Source: USGS 1 meter dem
Interval(ft): 3.0
Min: 1,207.7
Max: 1,239.7
Range: 32.0
Average: 1,228.1
Standard Deviation: 5.81 ft

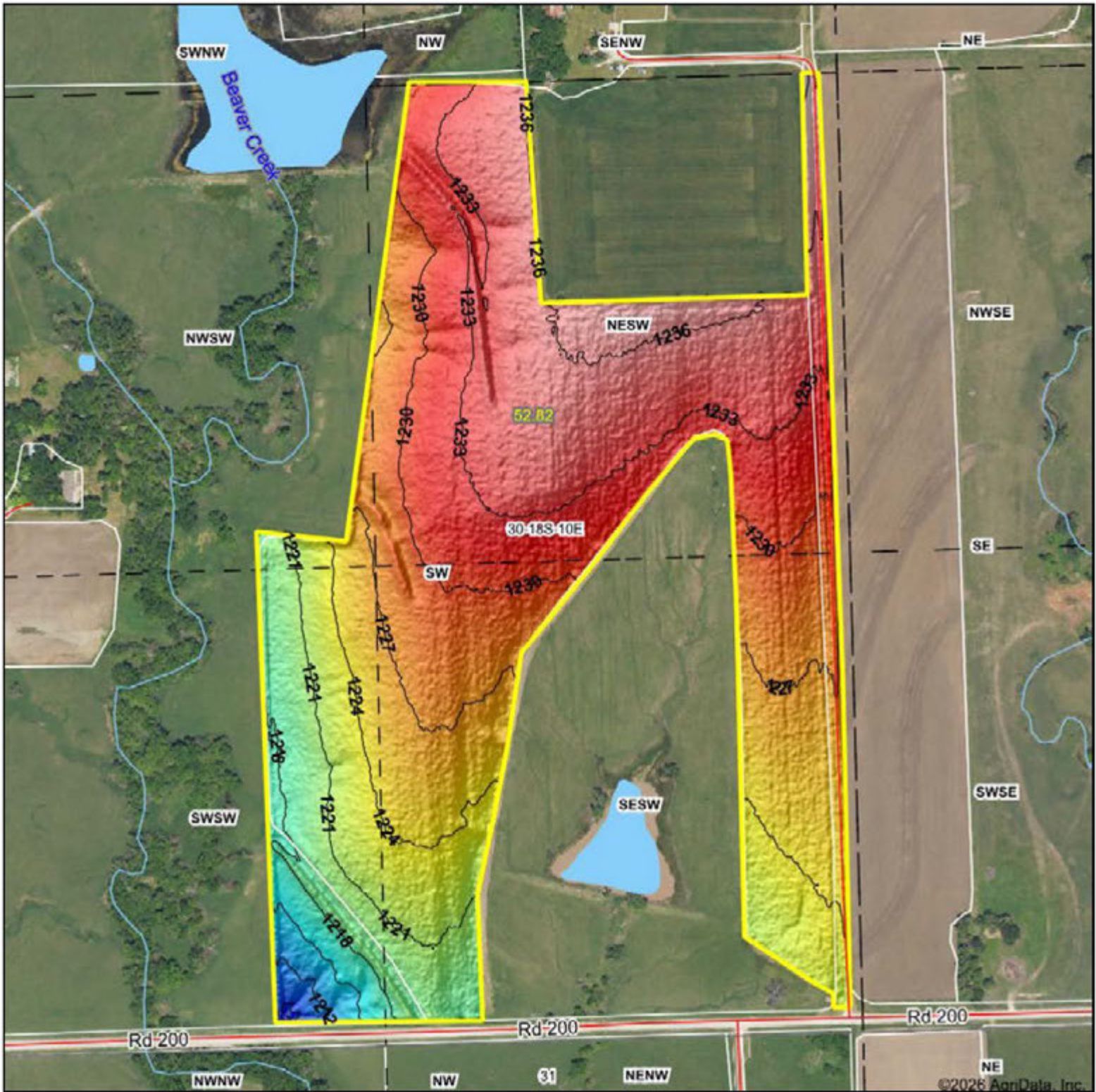


4/3/2026

30-18S-10E
Lyon County
Kansas

Boundary Center: 38° 27' 10.08, -96° 20' 53.25

Topography Hillshade



Maps Provided By:



© AgriData, Inc. 2025. www.AgridataInc.com

Field borders provided by Farm Service Agency as of 5/21/2008.

Source: USGS 1 meter dem
 Interval(ft): 3
 Min: 1,207.7
 Max: 1,239.7
 Range: 32.0
 Average: 1,228.1
 Standard Deviation: 5.81 ft

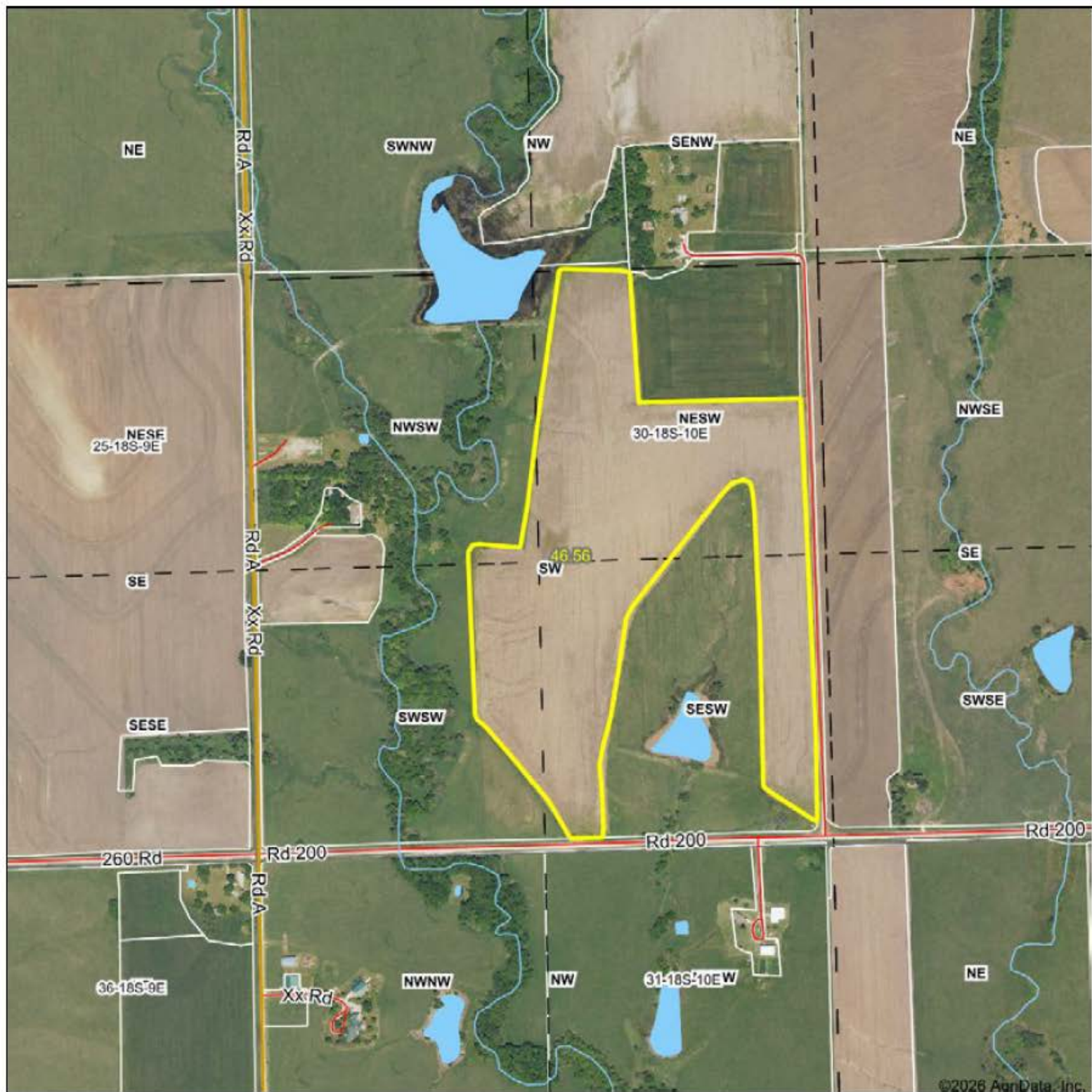


4/3/2026

30-18S-10E
 Lyon County
 Kansas

Boundary Center: 38° 27' 10.08, -96° 20' 53.25

Aerial Map



Boundary Center: 38° 27' 10.08, -96° 20' 53.47

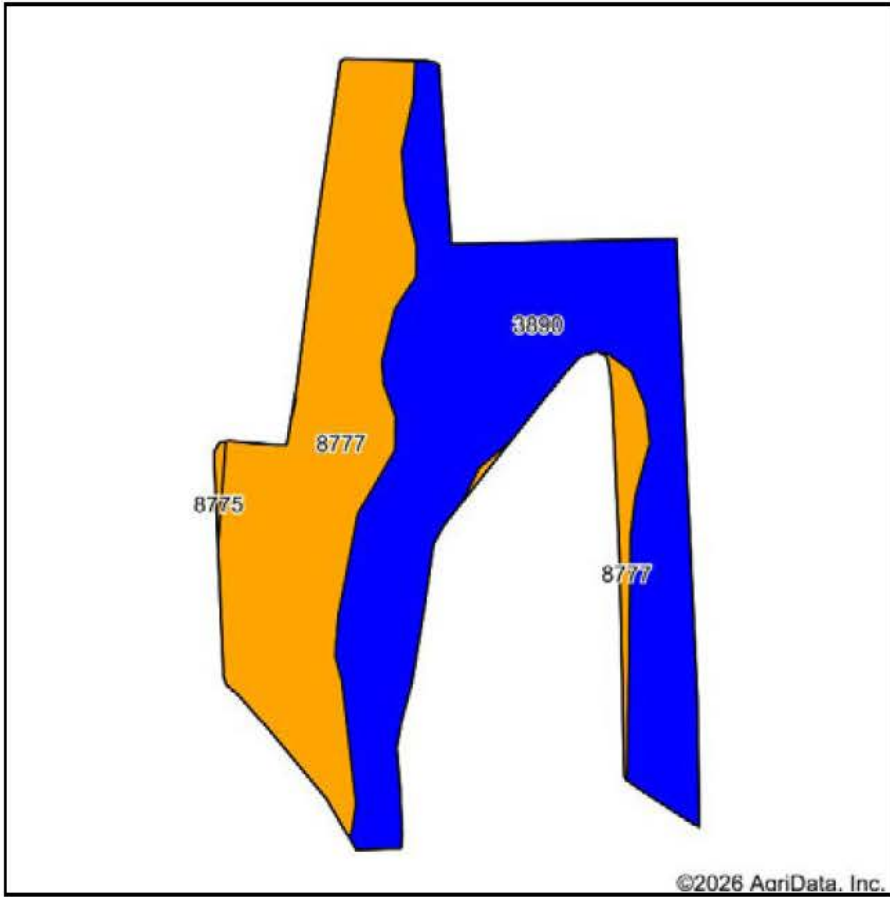


30-18S-10E
Lyon County
Kansas

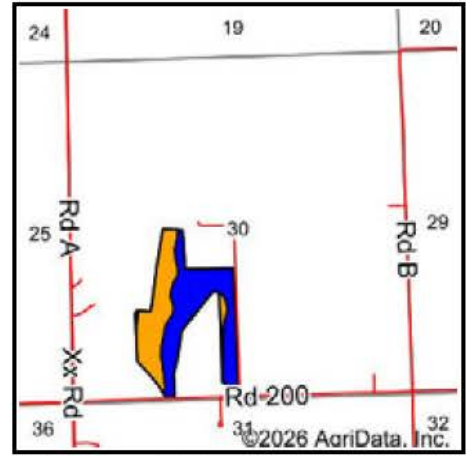


4/3/2026

Soils Map



Soils data provided by USDA and NRCS.



State: **Kansas**
 County: **Lyon**
 Location: **30-18S-10E**
 Township: **Americus**
 Acres: **46.56**
 Date: **4/3/2026**



Area Symbol: KS111, Soil Area Version: 24

Code	Soil Description	Acres	Percent of field	Non-Irr Class Legend	Non-Irr Class *c	Irr Class *c	*n NCCPI Soybeans
3890	Ladysmith silty clay loam, 0 to 1 percent slopes	26.43	56.8%		IIs	IIs	52
8777	Kenoma silty clay loam, 1 to 3 percent slopes, eroded	19.97	42.9%		IIIe		49
8775	Kenoma silt loam, 1 to 3 percent slopes	0.16	0.3%		IIIe		59
Weighted Average					2.43	*-	*n 50.7

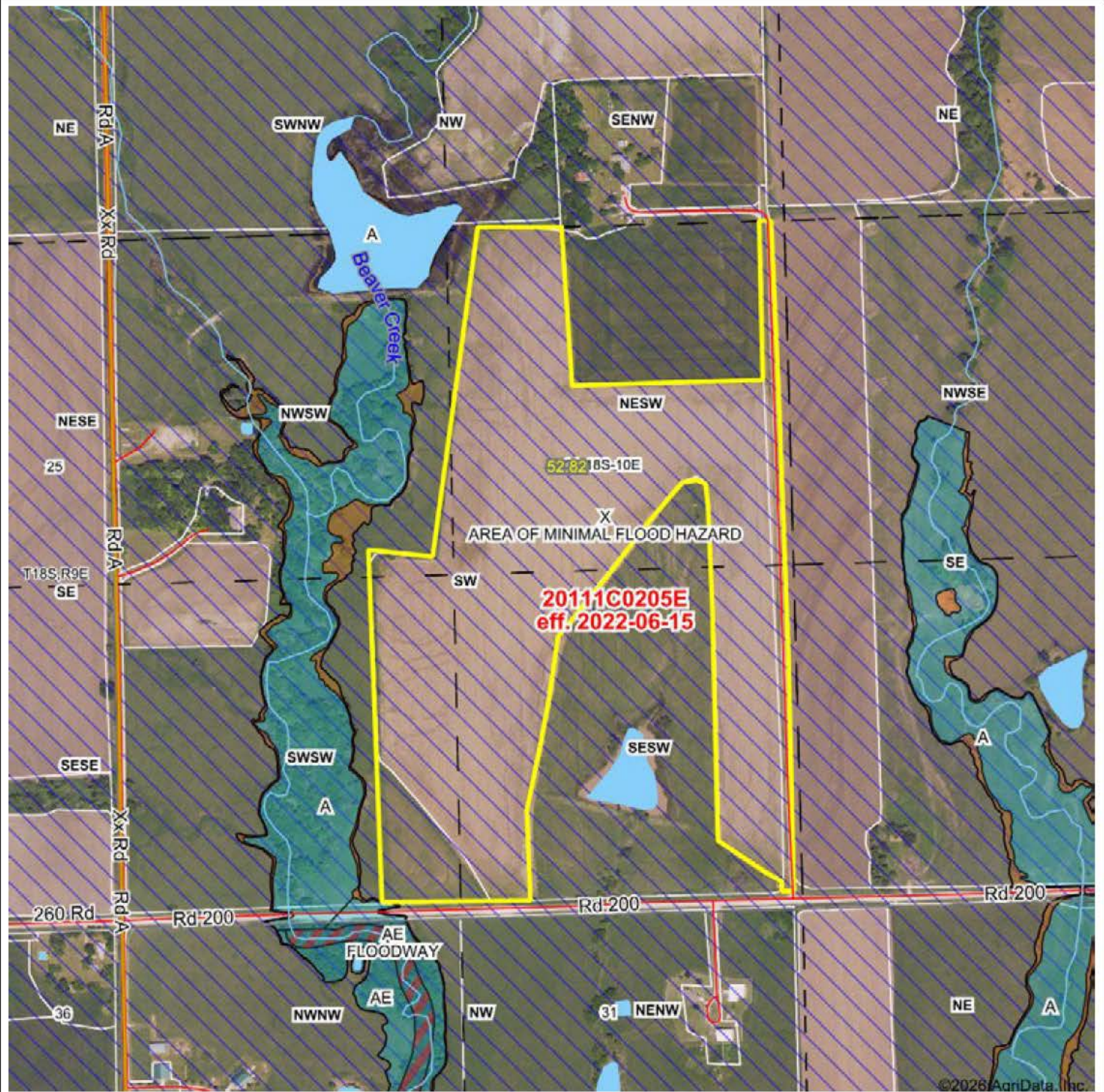
*n: The aggregation method is "Weighted Average using all components"

*c: Using Capabilities Class Dominant Condition Aggregation Method

*- Irr Class weighted average cannot be calculated on the current soils data due to missing data.

Soils data provided by USDA and NRCS.

STANDARD FLOOD HAZARD DETERMINATION FORM (SFHDF) Form



Map will display available Flood Zone(s), FIRM Panel(s), LOMC and Communities.

Date:	Mapped Acres:	Actual Acres:
4/3/2026	52.82	52.82



Maps Provided By

CUSTOMIZED ONLINE MAPPING
© AgriData, Inc. 2025 www.AgrDataInc.com

