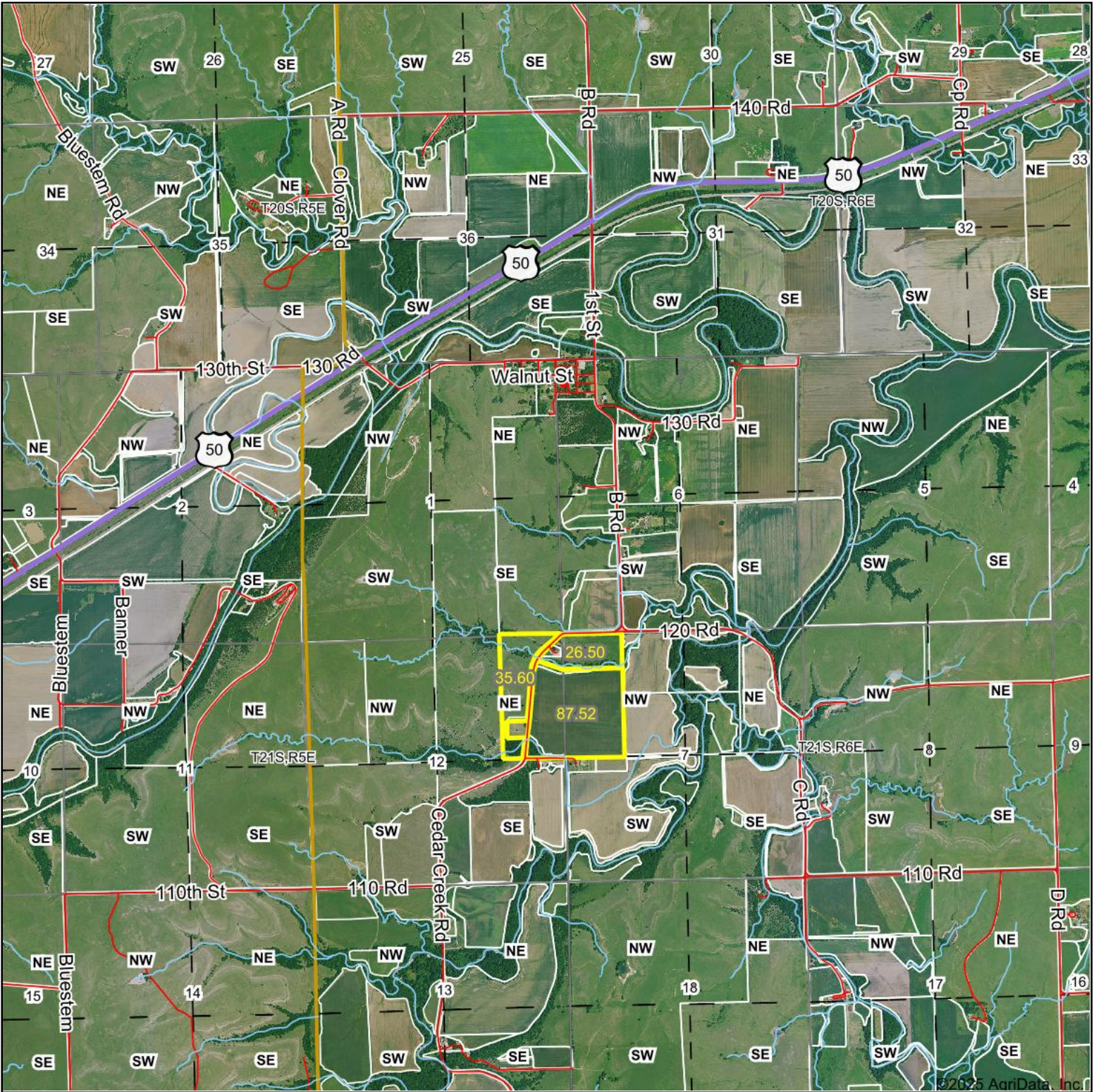
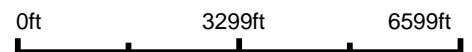


# Aerial Map



Boundary Center: 38° 14' 30.33, -96° 49' 20.43



12-21S-5E  
Chase County  
Kansas

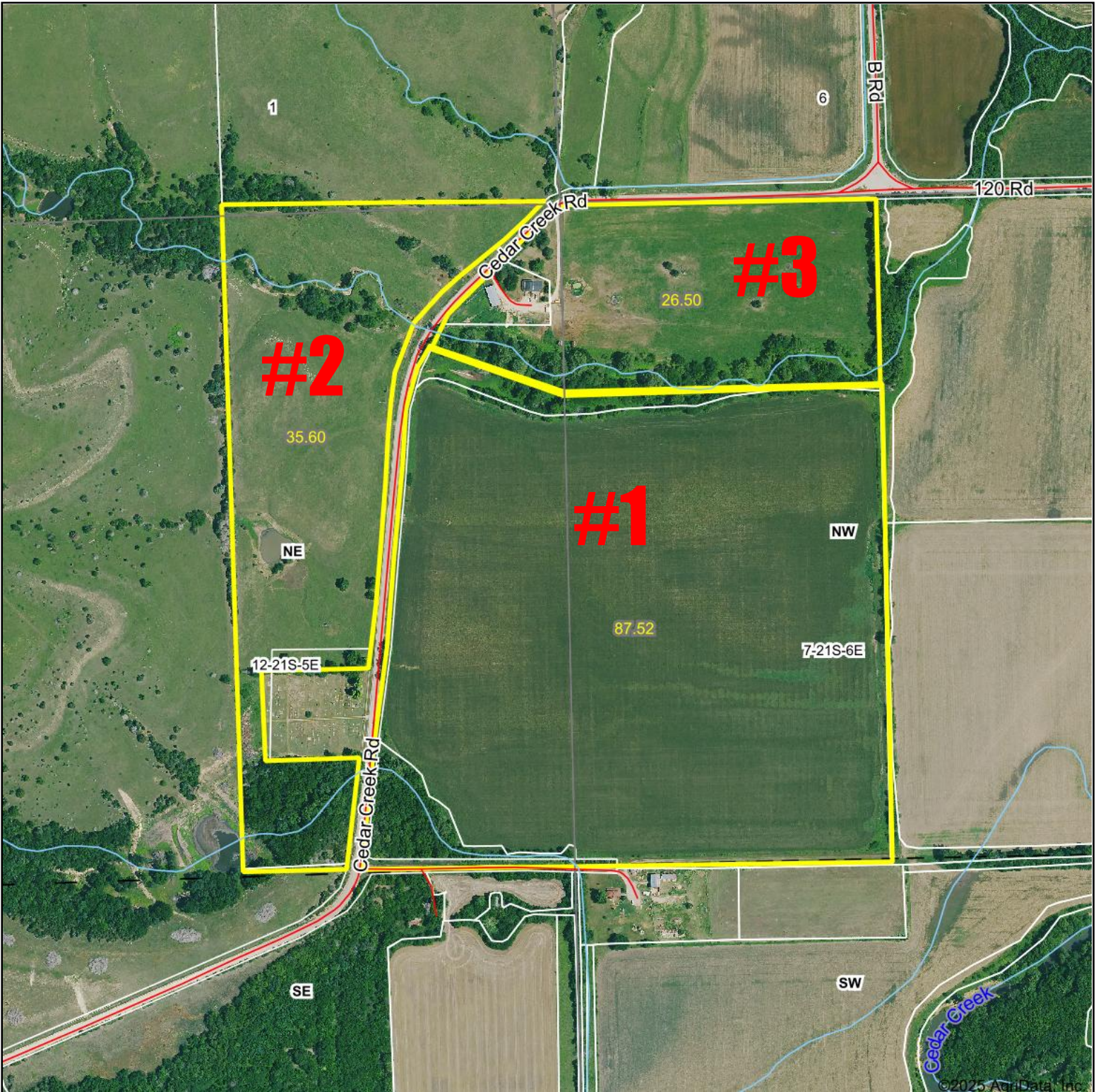


Maps Provided By:  
**surety**  
CUSTOMIZED ONLINE MAPPING  
© AgriData, Inc. 2023 www.AgridataInc.com

2/17/2025

Field borders provided by Farm Service Agency as of 5/21/2008.

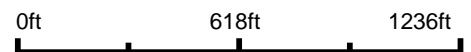
# Aerial Map



©2025 AgriData, Inc.



Boundary Center: 38° 14' 30.33, -96° 49' 20.43



12-21S-5E  
Chase County  
Kansas

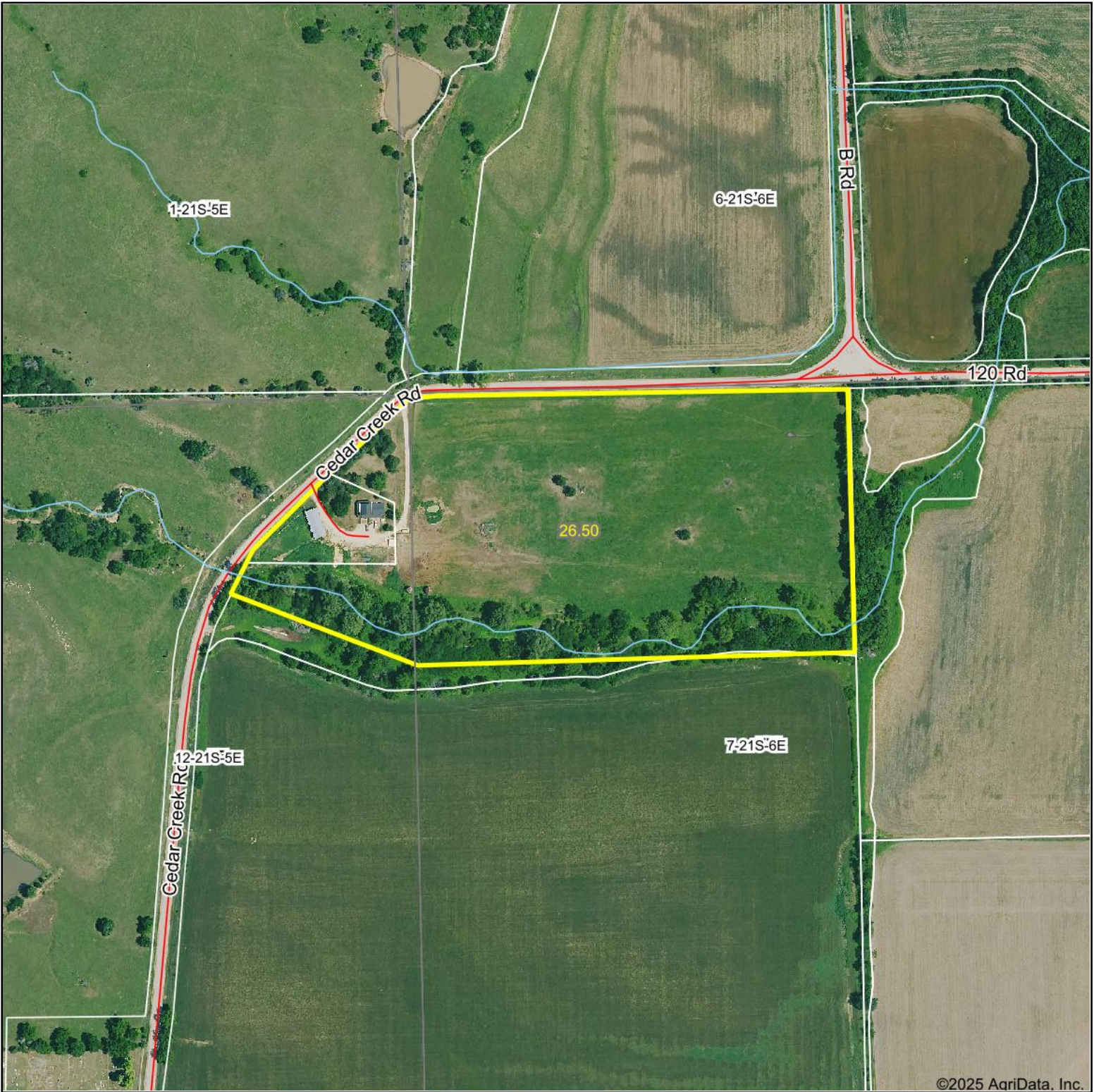


Maps Provided By:  
 **surety**  
CUSTOMIZED ONLINE MAPPING  
© AgriData, Inc. 2023 www.AgriDataInc.com

2/17/2025

Field borders provided by Farm Service Agency as of 5/21/2008.

# Aerial Map



Boundary Center: 38° 14' 39.42, -96° 49' 15.35



7-21S-6E  
Chase County  
Kansas

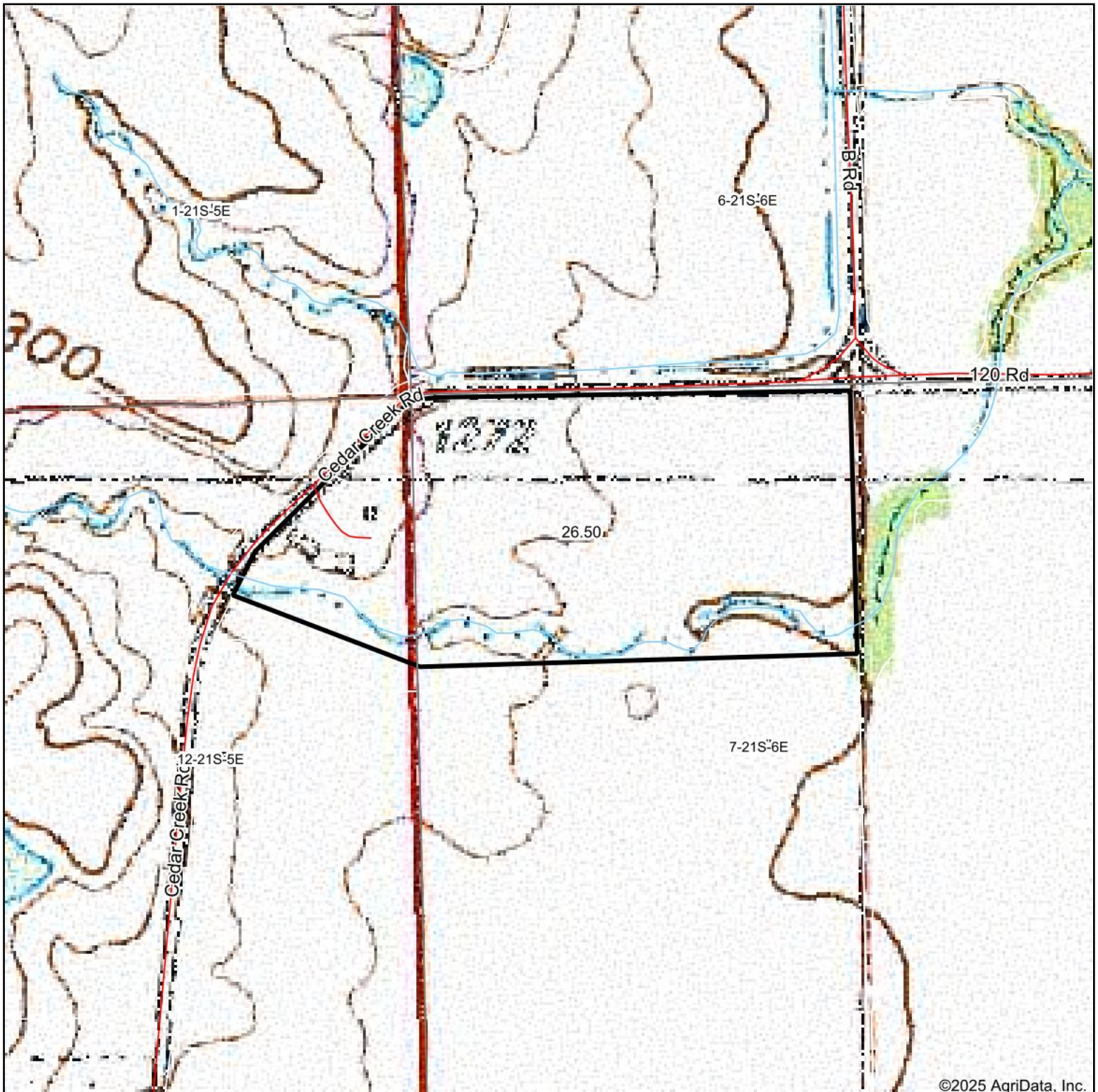


Maps Provided By:  
 **surety**  
CUSTOMIZED ONLINE MAPPING  
© AgriData, Inc. 2023 www.AgriDataInc.com

2/22/2025

Field borders provided by Farm Service Agency as of 5/21/2008.

# Topography Map



©2025 AgriData, Inc.



Map Center: 38° 14' 38.89, -96° 49' 15.18



**7-21S-6E**  
**Chase County**  
**Kansas**



2/22/2025

Maps Provided By:  
  
CUSTOMIZED ONLINE MAPPING  
© AgriData, Inc. 2023      www.AgridataInc.com

Field borders provided by Farm Service Agency as of 5/21/2008.

# Topography Contours



©2025 AgriData, Inc.



Maps Provided By:



© AgriData, Inc. 2023

www.AgriDataInc.com

Field borders provided by Farm Service Agency as of 5/21/2008.

Source: USGS 1 meter dem

Interval(ft): 2.0

Min: 1,246.2

Max: 1,281.0

Range: 34.8

Average: 1,260.0

Standard Deviation: 7.09 ft

0ft 331ft 662ft

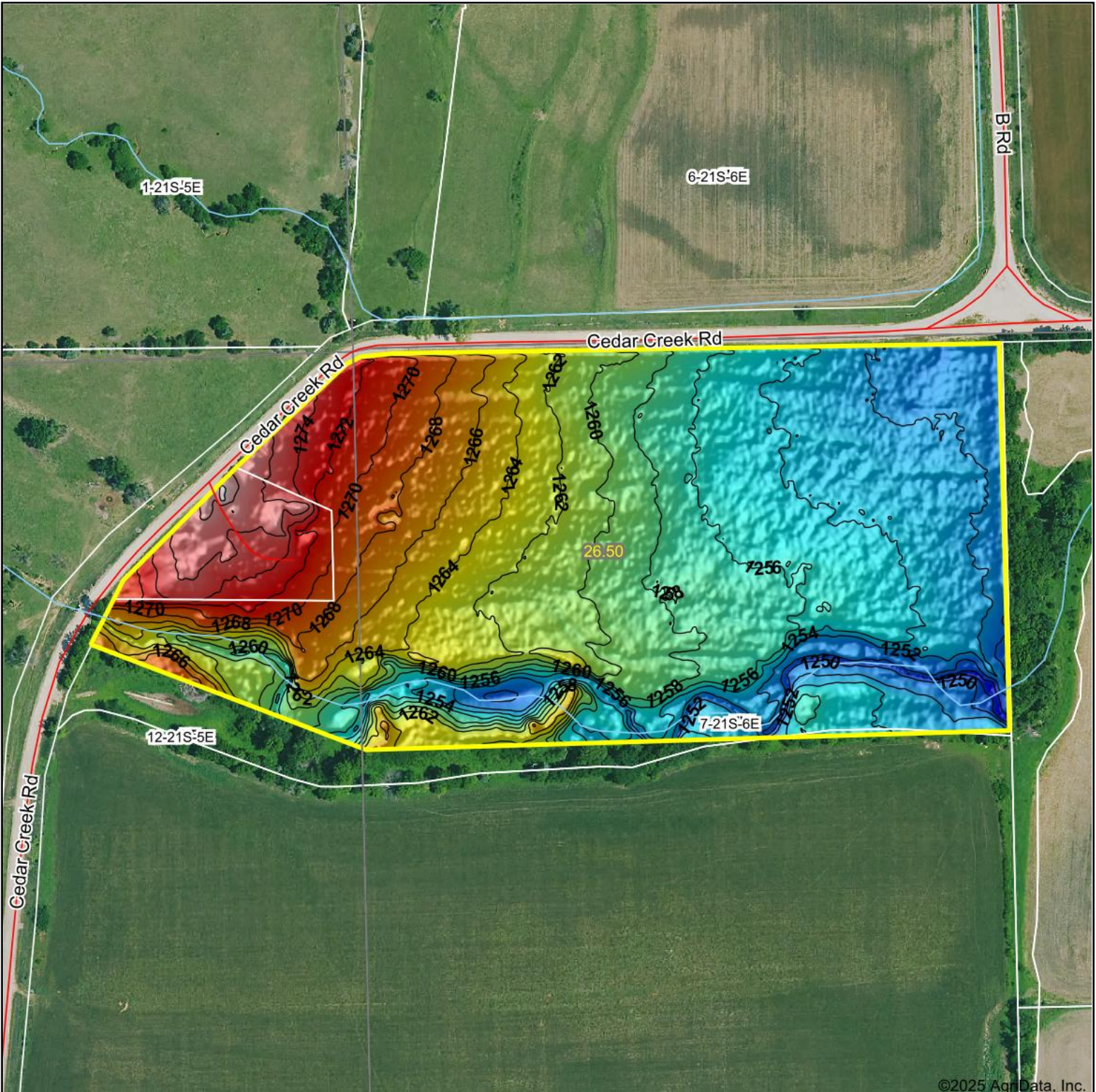


2/22/2025

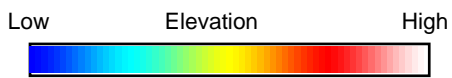
7-21S-6E  
Chase County  
Kansas

Boundary Center: 38° 14' 39.42, -96° 49' 15.35

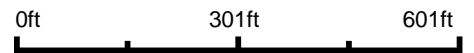
# Topography Hillshade



©2025 AgriData, Inc.



Source: USGS 1 meter dem



Interval(ft): 2

Min: 1,246.2

Max: 1,281.0

Range: 34.8

Average: 1,260.0

Standard Deviation: 7.09 ft



2/22/2025

**7-21S-6E**  
**Chase County**  
**Kansas**

Boundary Center: 38° 14' 39.42, -96° 49' 15.35



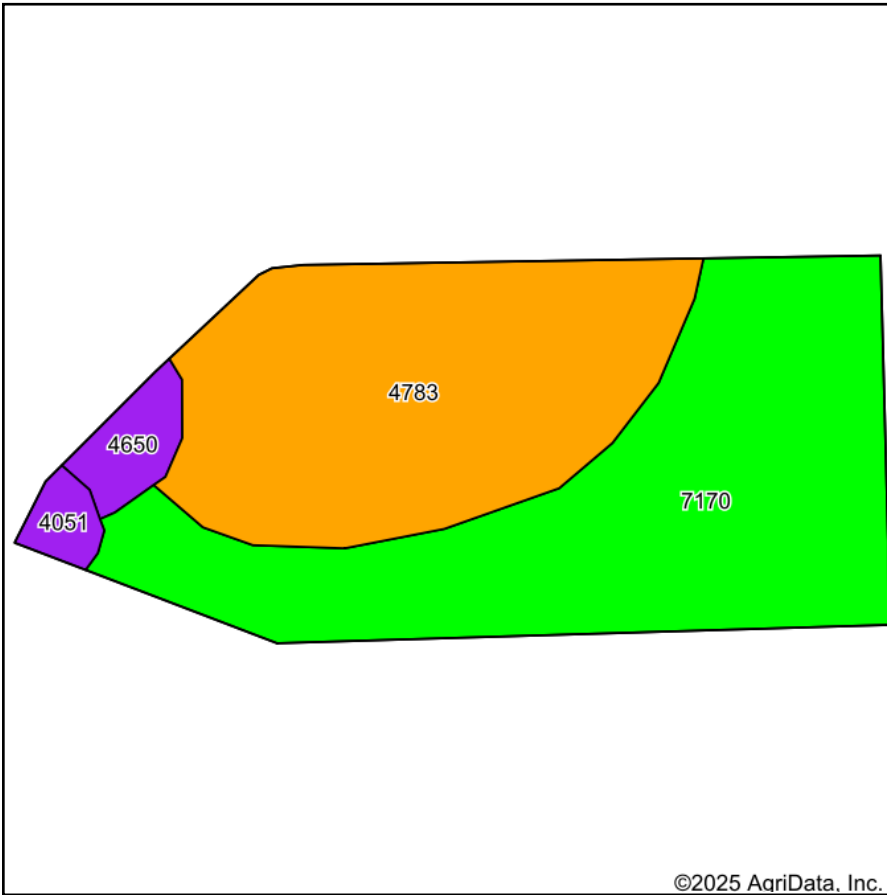
Maps Provided By:



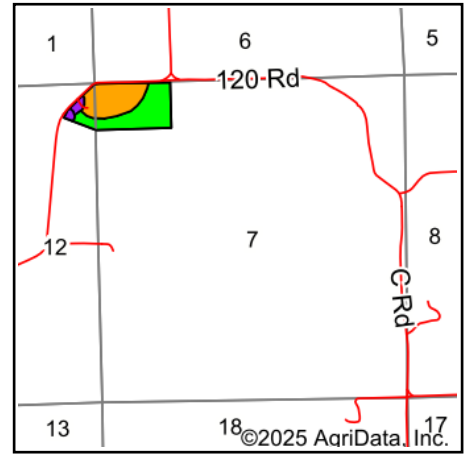
© AgriData, Inc. 2023 www.AgriDataInc.com

Field borders provided by Farm Service Agency as of 5/21/2008.

# Soils Map



Soils data provided by USDA and NRCS.



State: **Kansas**  
 County: **Chase**  
 Location: **7-21S-6E**  
 Township: **Cottonwood**  
 Acres: **26.5**  
 Date: **2/22/2025**



Maps Provided By:



Area Symbol: KS017, Soil Area Version: 20

Code	Soil Description	Acres	Percent of field	Non-Irr Class Legend	Non-Irr Class *c	Irr Class *c	*n NCCPI Soybeans
7170	Reading silt loam, rarely flooded	13.86	52.3%		Iw	Iw	76
4783	Tully silty clay loam, 3 to 7 percent slopes	11.19	42.2%		IIIe	IIIe	60
4650	Florence silt loam, 2 to 15 percent slopes	0.93	3.5%		VIe	VIe	24
4051	Ivan silt loam, channeled	0.52	2.0%		Vw		51
<b>Weighted Average</b>					<b>2.10</b>	<b>*-</b>	<b>*n 66.9</b>

\*n: The aggregation method is "Weighted Average using all components"

\*c: Using Capabilities Class Dominant Condition Aggregation Method

\*- Irr Class weighted average cannot be calculated on the current soils data due to missing data.