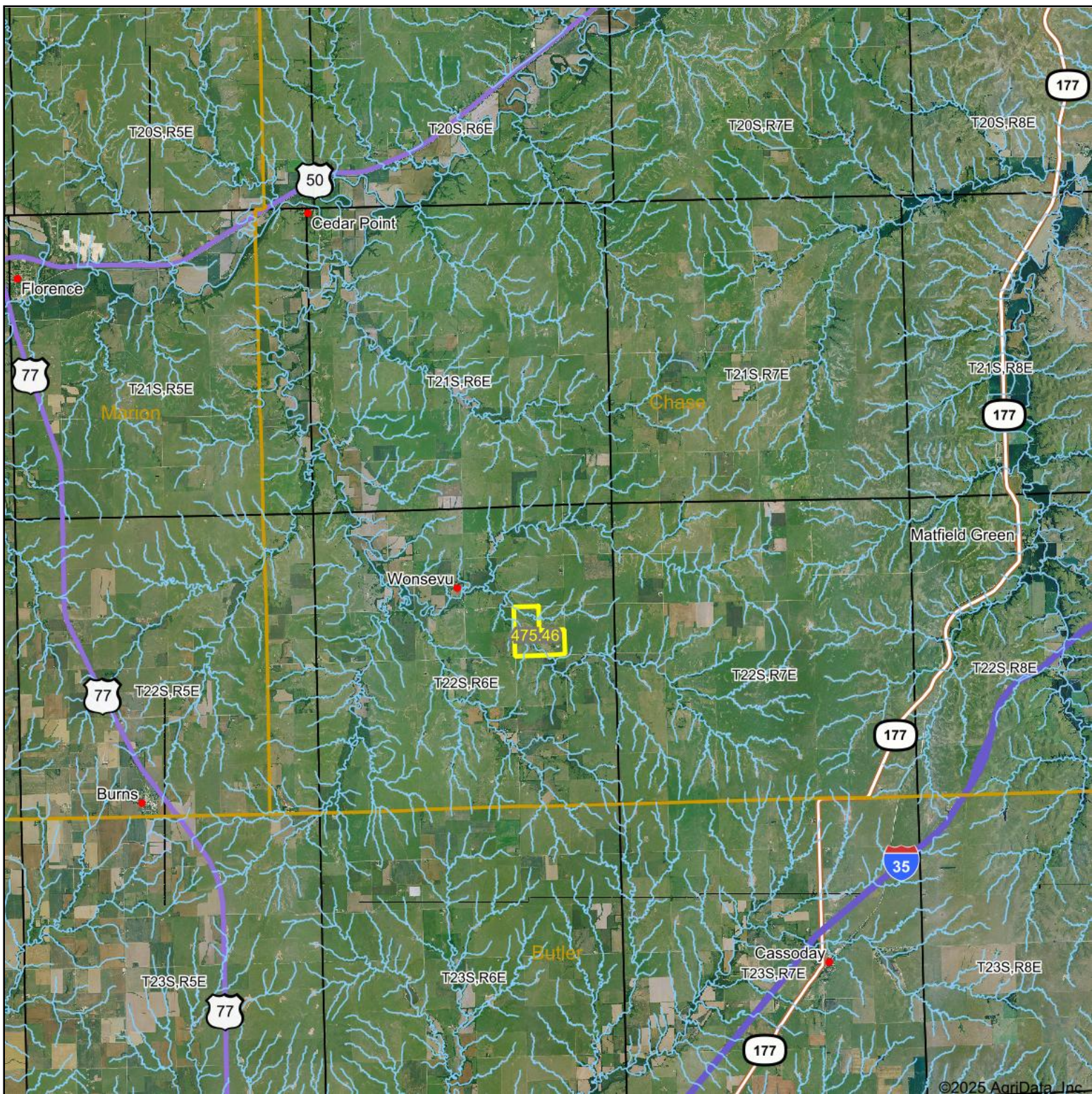


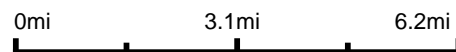
Aerial Map



©2025 AgriData, Inc.



Boundary Center: 38° 8' 13.04, -96° 44' 24.84



14-22S-6E
Chase County
Kansas



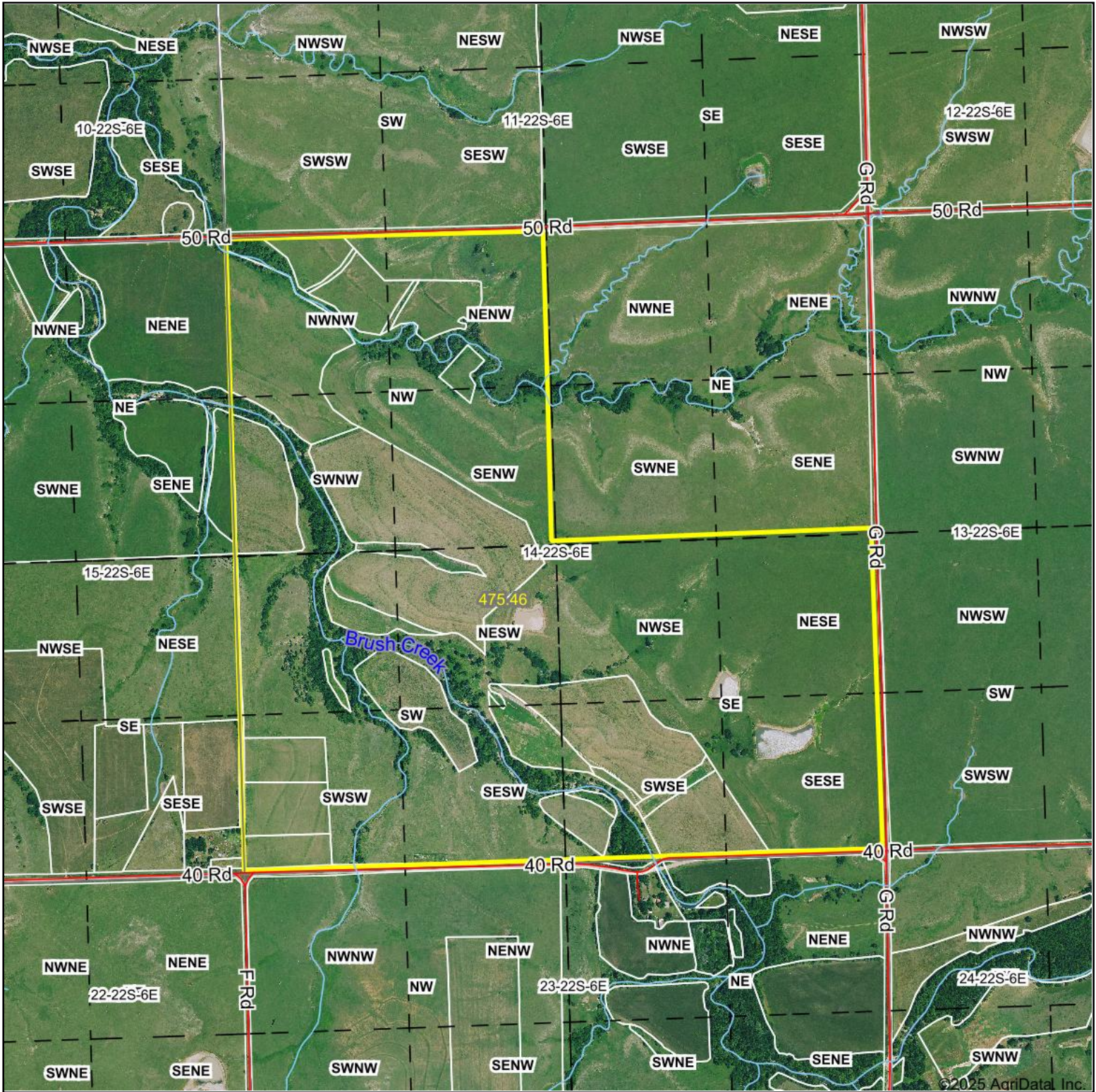
Maps Provided By:

CUSTOMIZED ONLINE MAPPING
© AgriData, Inc. 2023 www.AgriDataInc.com

2/7/2025

Field borders provided by Farm Service Agency as of 5/21/2008.

Aerial Map



Boundary Center: 38° 8' 13.04, -96° 44' 24.84

0ft 1288ft 2575ft



14-22S-6E
Chase County
Kansas

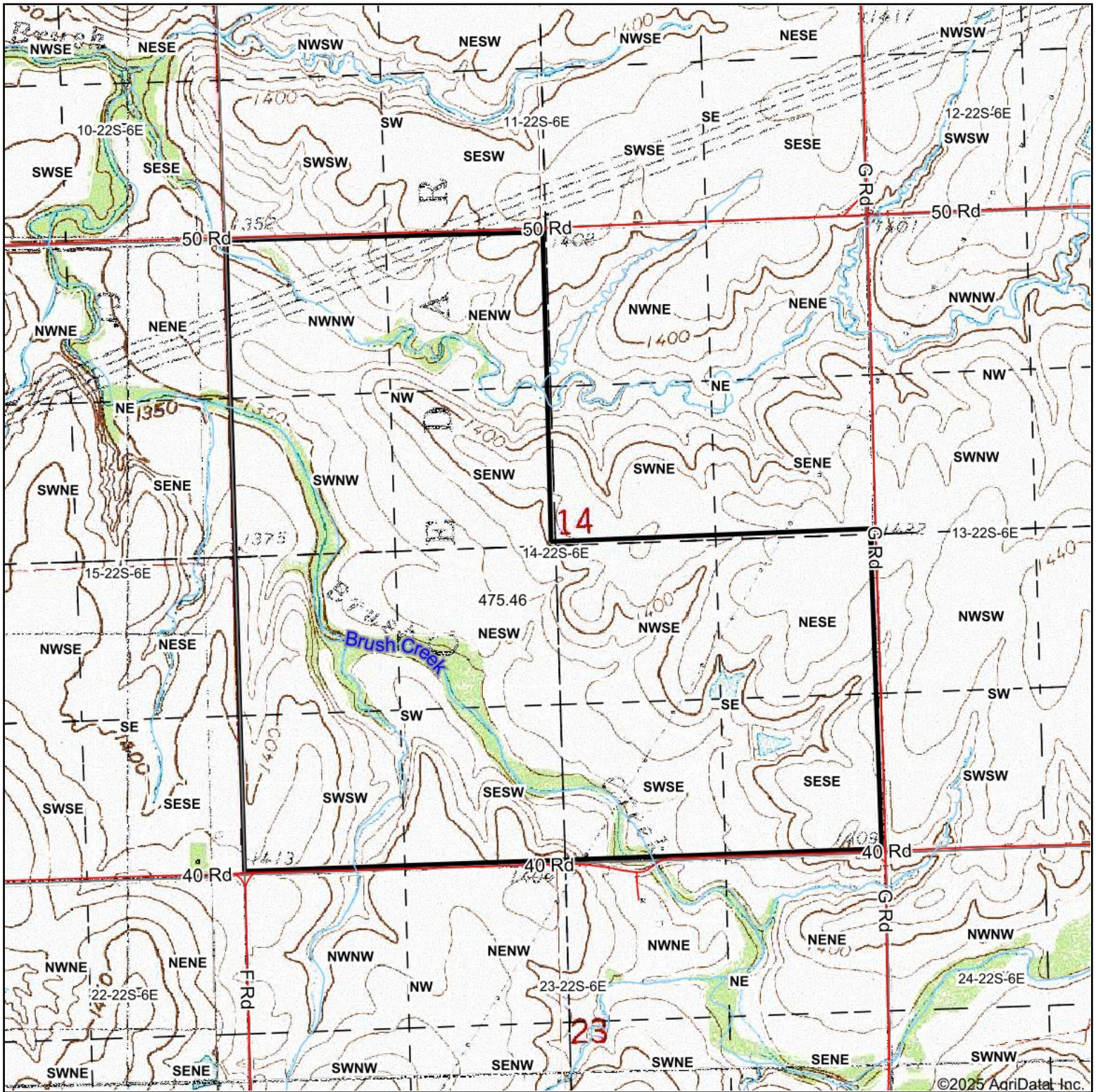


Maps Provided By:
surety
CUSTOMIZED ONLINE MAPPING
© AgriData, Inc. 2023 www.AgriDataInc.com

2/7/2025

Field borders provided by Farm Service Agency as of 5/21/2008.

Topography Map



©2025 AgriData, Inc.



Map Center: 38° 8' 13.06, -96° 44' 25.53



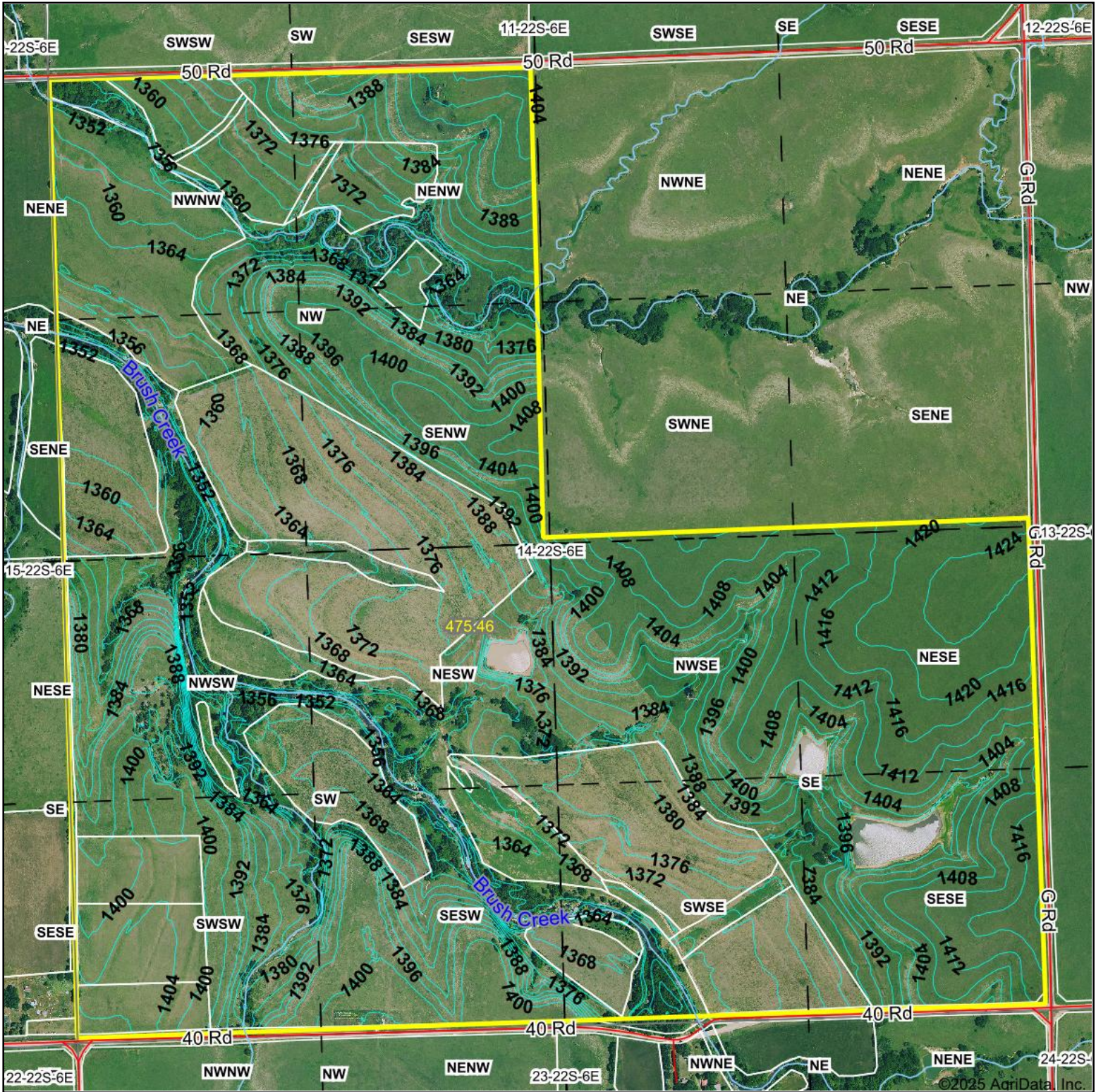
14-22S-6E
Chase County
Kansas



Maps Provided By:
 **surety**
CUSTOMIZED ONLINE MAPPING
© AgriData, Inc. 2023 www.AgridataInc.com

Field borders provided by Farm Service Agency as of 5/21/2008.

Topography Contours



Source: USGS 3 meter dem

0ft 849ft 1698ft

Interval(ft): 4.0

Min: 1,344.2

Max: 1,425.4

Range: 81.2

Average: 1,383.1

Standard Deviation: 19.49 ft



2/7/2025

14-22S-6E
Chase County
Kansas

Boundary Center: 38° 8' 13.04, -96° 44' 24.84

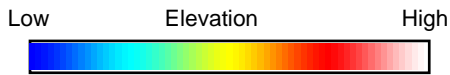
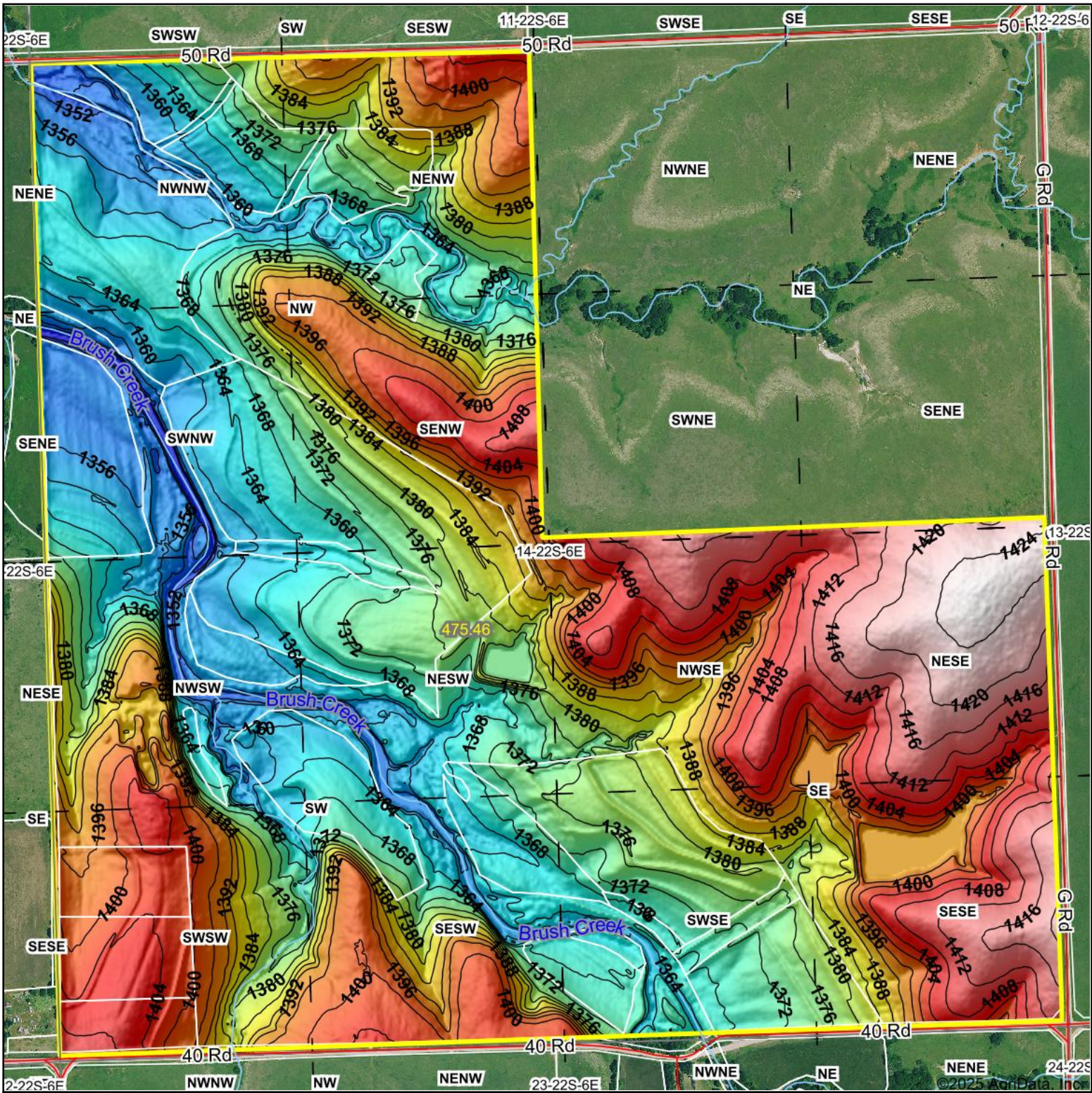
Maps Provided By:



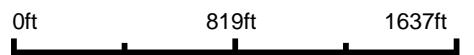
© AgriData, Inc. 2023 www.AgridataInc.com

Field borders provided by Farm Service Agency as of 5/21/2008.

Topography Hillshade



Source: USGS 3 meter dem
 Interval(ft): 4
 Min: 1,344.2
 Max: 1,425.4
 Range: 81.2
 Average: 1,383.1
 Standard Deviation: 19.49 ft



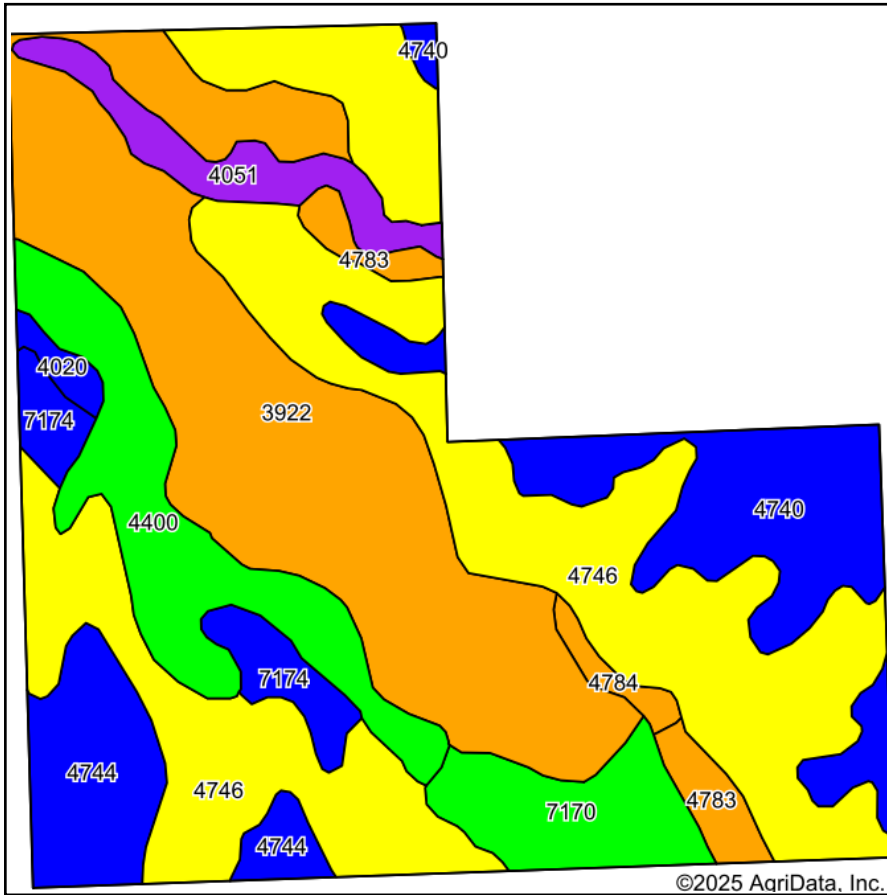
14-22S-6E
 Chase County
 Kansas

Boundary Center: 38° 8' 13.04, -96° 44' 24.84

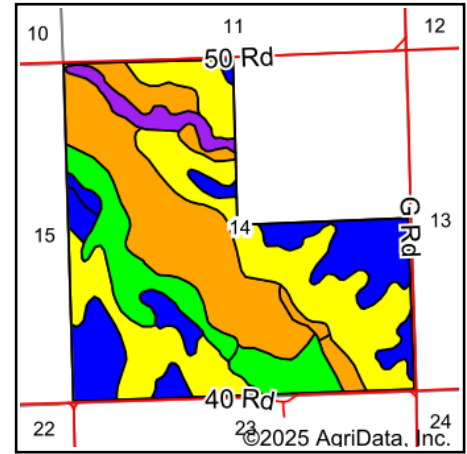


© AgriData, Inc. 2023 www.AgridataInc.com
 Field borders provided by Farm Service Agency as of 5/21/2008.

Soils Map



Soils data provided by USDA and NRCS.



State: **Kansas**
 County: **Chase**
 Location: **14-22S-6E**
 Township: **Cedar**
 Acres: **475.46**
 Date: **2/7/2025**



Area Symbol: KS017, Soil Area Version: 20

Code	Soil Description	Acres	Percent of field	Non-Irr Class Legend	Non-Irr Class *c	Irr Class *c	*n NCCPI Soybeans
4746	Labette-Sogn silty clay loam, 0 to 8 percent slopes	159.73	33.6%		IVe	IIIe	33
3922	Smolan silty clay loam, 3 to 7 percent slopes	126.40	26.6%		IIIe	IIIe	65
4740	Labette silty clay loam, 1 to 3 percent slopes	48.72	10.2%		Ile	Ile	43
4400	Kahola silt loam, rarely flooded	43.17	9.1%		Iw	Iw	86
4744	Labette-Dwight complex, 0 to 3 percent slopes	28.28	5.9%		Ile	Ile	43
7170	Reading silt loam, rarely flooded	22.28	4.7%		Iw	Iw	76
4051	Ivan silt loam, channeled	16.07	3.4%		Vw		51
7174	Reading silt loam, 1 to 3 percent slopes	13.68	2.9%		Ile	Ile	76
4783	Tully silty clay loam, 3 to 7 percent slopes	10.46	2.2%		IIIe	IIIe	60
4784	Tully silty clay loam, 3 to 7 percent slopes, eroded	3.58	0.8%		IIIe	IIIe	52
4020	Chase silty clay loam, occasionally flooded	3.09	0.6%		IIw	IIw	66
Weighted Average					2.93	*-	*n 52.8

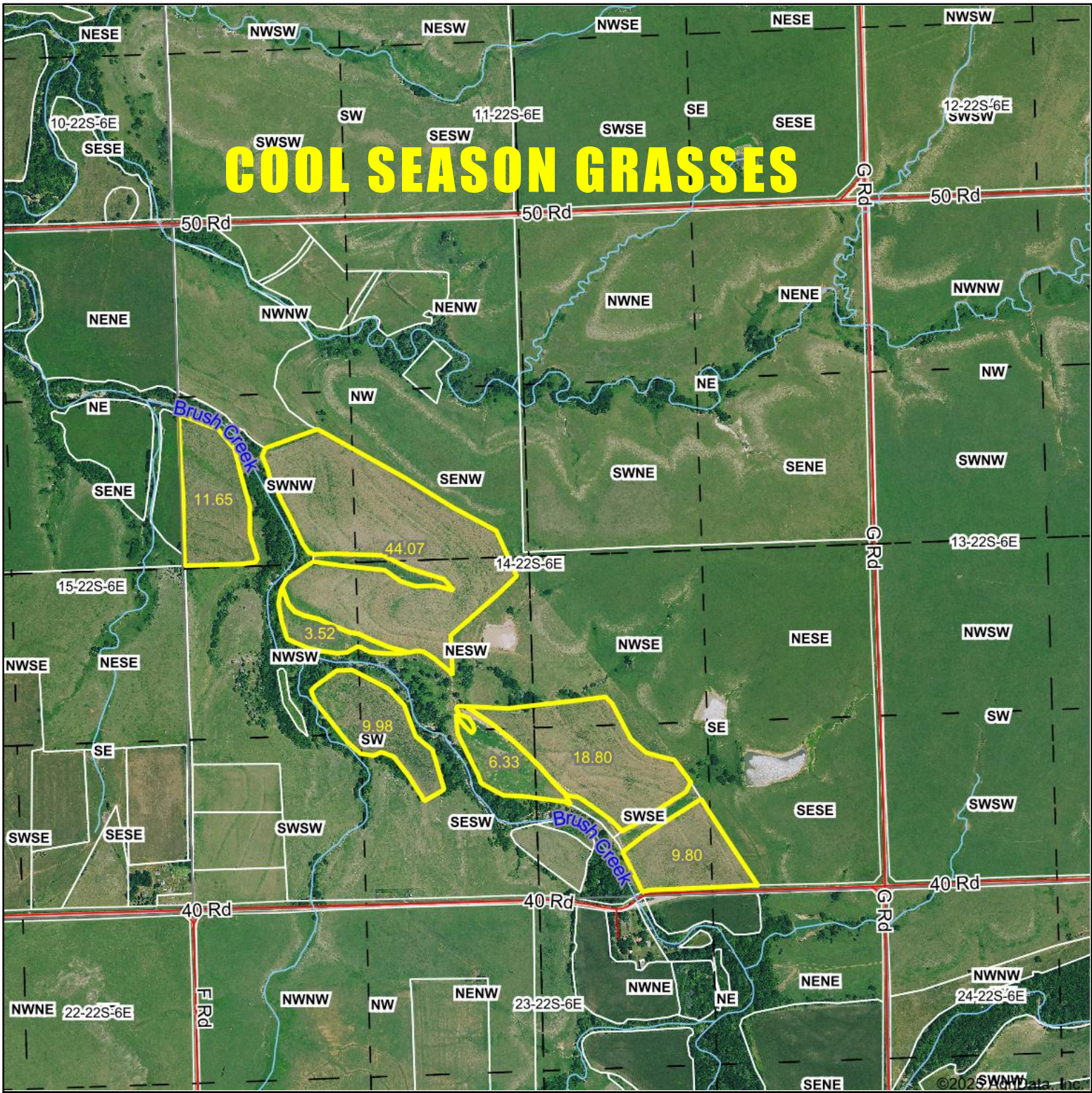
*n: The aggregation method is "Weighted Average using all components"

*c: Using Capabilities Class Dominant Condition Aggregation Method

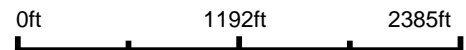
*- Irr Class weighted average cannot be calculated on the current soils data due to missing data.

Aerial Map

COOL SEASON GRASSES



Boundary Center: 38° 8' 6.06, -96° 44' 30.69



14-22S-6E
Chase County
Kansas

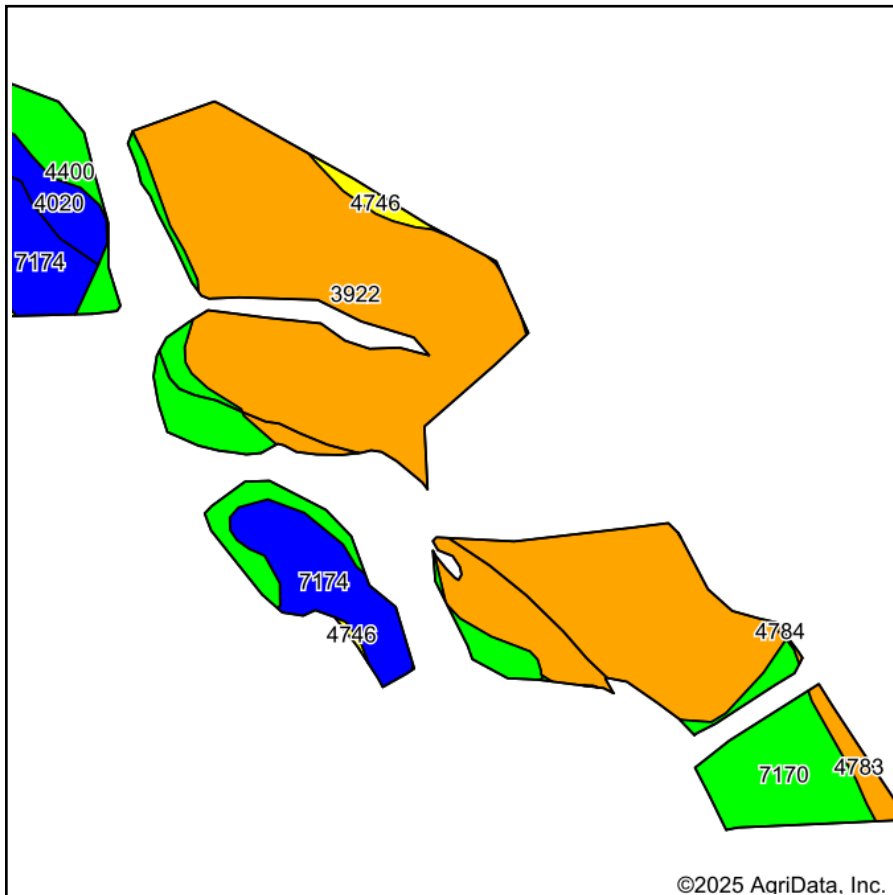


Maps Provided By:
surety
CUSTOMIZED ONLINE MAPPING
© AgriData, Inc. 2023 www.AgriDataInc.com

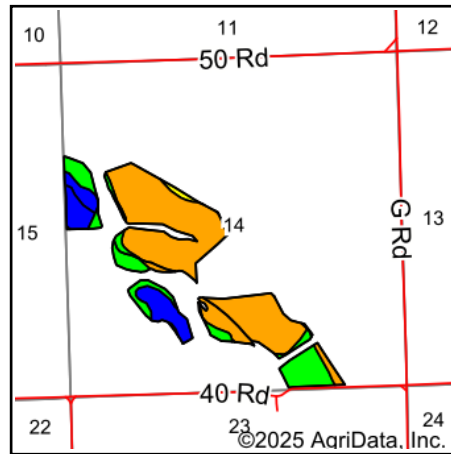
2/7/2025

Field borders provided by Farm Service Agency as of 5/21/2008.

Soils Map



Soils data provided by USDA and NRCS.



State: **Kansas**
 County: **Chase**
 Location: **14-22S-6E**
 Township: **Cedar**
 Acres: **104.15**
 Date: **2/7/2025**



Area Symbol: KS017, Soil Area Version: 20

Code	Soil Description	Acres	Percent of field	Non-Irr Class Legend	Non-Irr Class *c	Irr Class *c	*n NCCPI Soybeans
3922	Smolan silty clay loam, 3 to 7 percent slopes	64.82	62.3%		IIIe	IIIe	65
4400	Kahola silt loam, rarely flooded	12.64	12.1%		Iw	Iw	86
7174	Reading silt loam, 1 to 3 percent slopes	11.62	11.2%		Ile	Ile	76
7170	Reading silt loam, rarely flooded	9.08	8.7%		Iw	Iw	76
4020	Chase silty clay loam, occasionally flooded	3.05	2.9%		IIw	IIw	66
4783	Tully silty clay loam, 3 to 7 percent slopes	1.68	1.6%		IIIe	IIIe	60
4746	Labette-Sogn silty clay loam, 0 to 8 percent slopes	1.17	1.1%		IVe	IIIe	33
4784	Tully silty clay loam, 3 to 7 percent slopes, eroded	0.09	0.1%		IIIe	IIIe	52
Weighted Average					2.45	2.44	*n 69.3

*n: The aggregation method is "Weighted Average using all components"

*c: Using Capabilities Class Dominant Condition Aggregation Method

Soils data provided by USDA and NRCS.