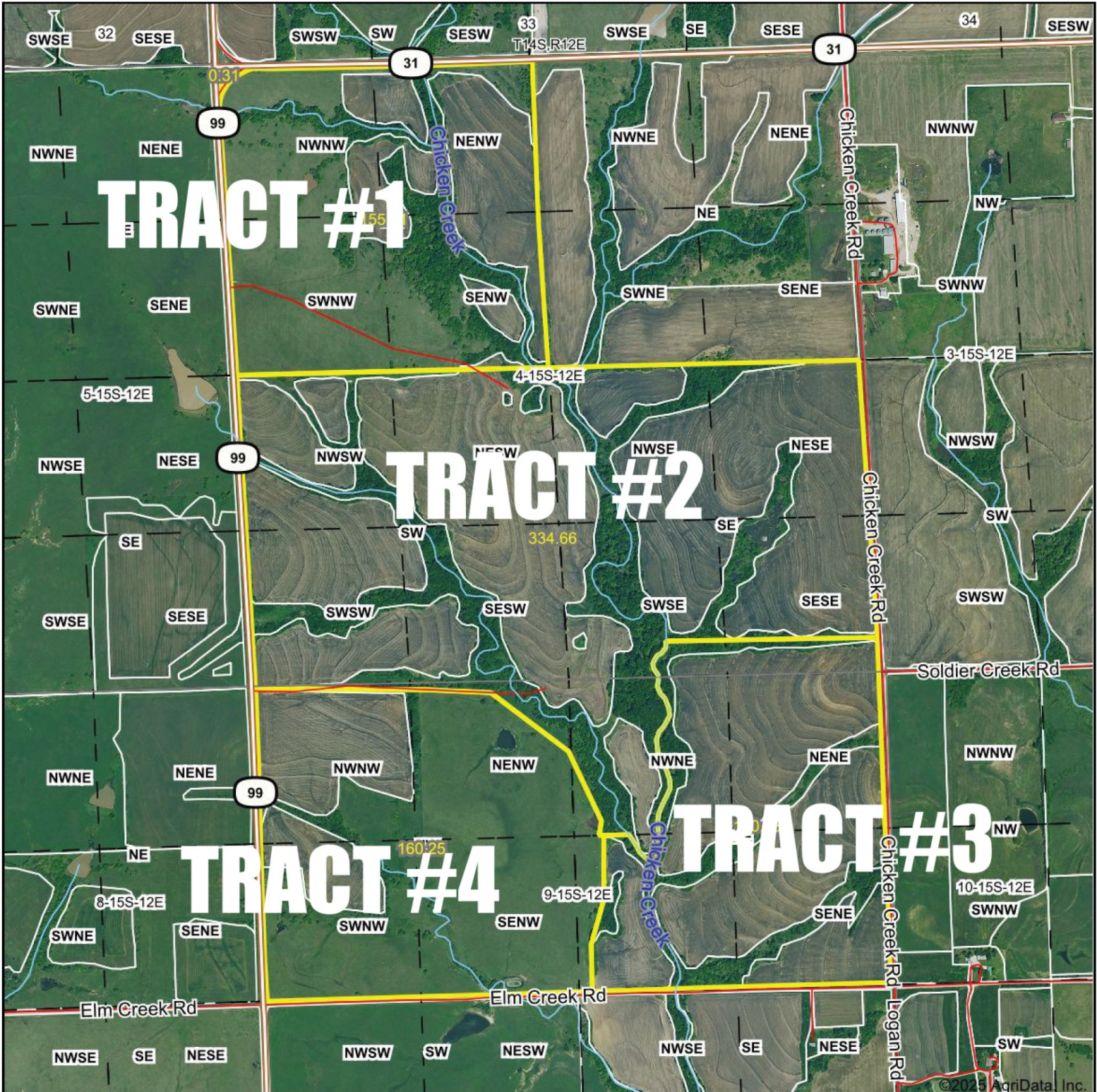
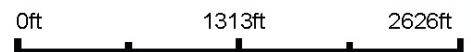


Aerial Map



Boundary Center: 38° 46' 18.41, -96° 5' 6.12



4-15S-12E
Wabaunsee County
Kansas

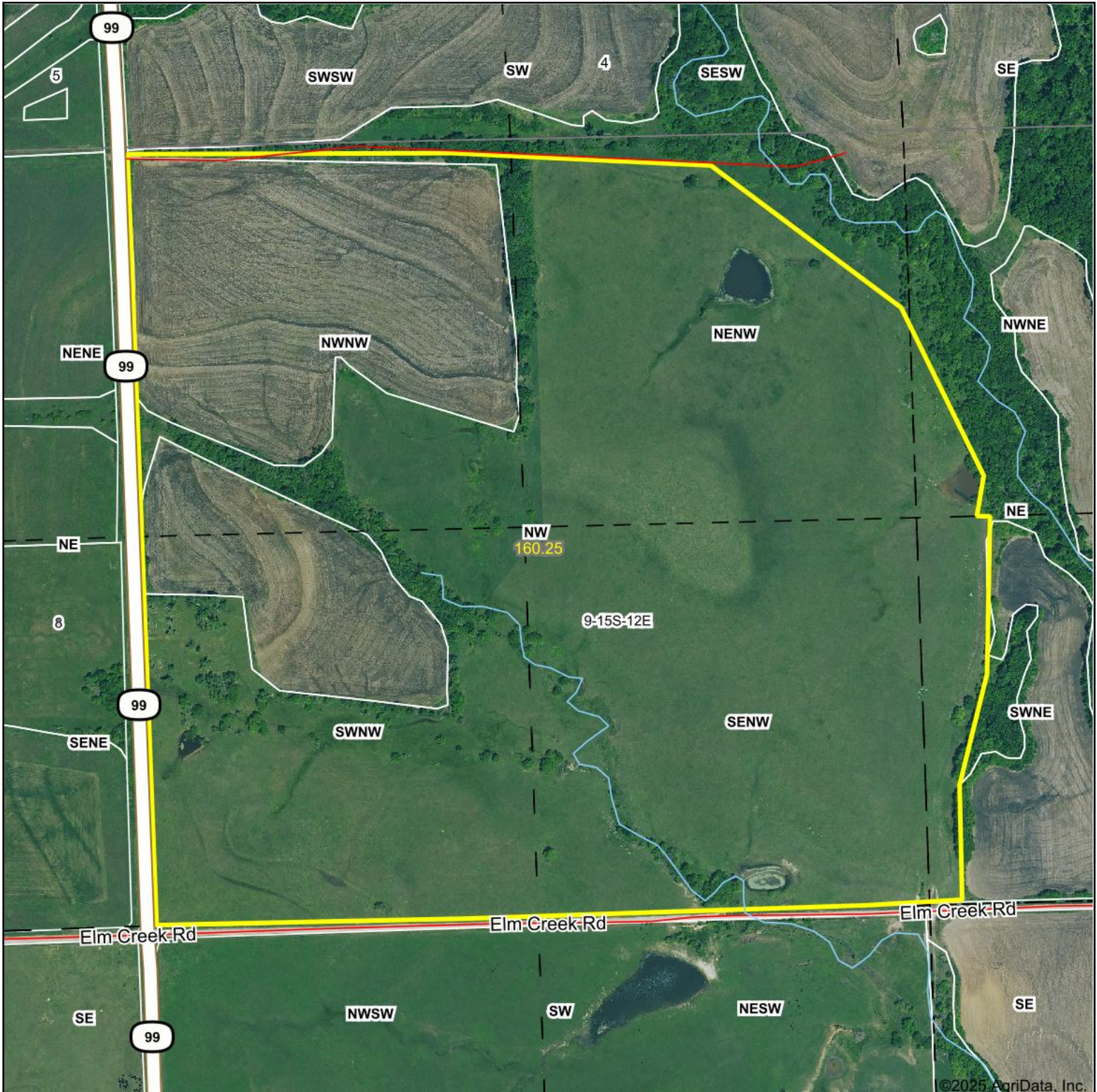


© AgriData, Inc. 2023 www.AgriDataInc.com

1/20/2025

Field borders provided by Farm Service Agency as of 5/21/2008.

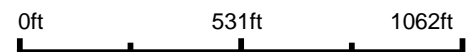
Aerial Map



©2025 AgriData, Inc.



Boundary Center: 38° 45' 52.52, -96° 5' 20.18

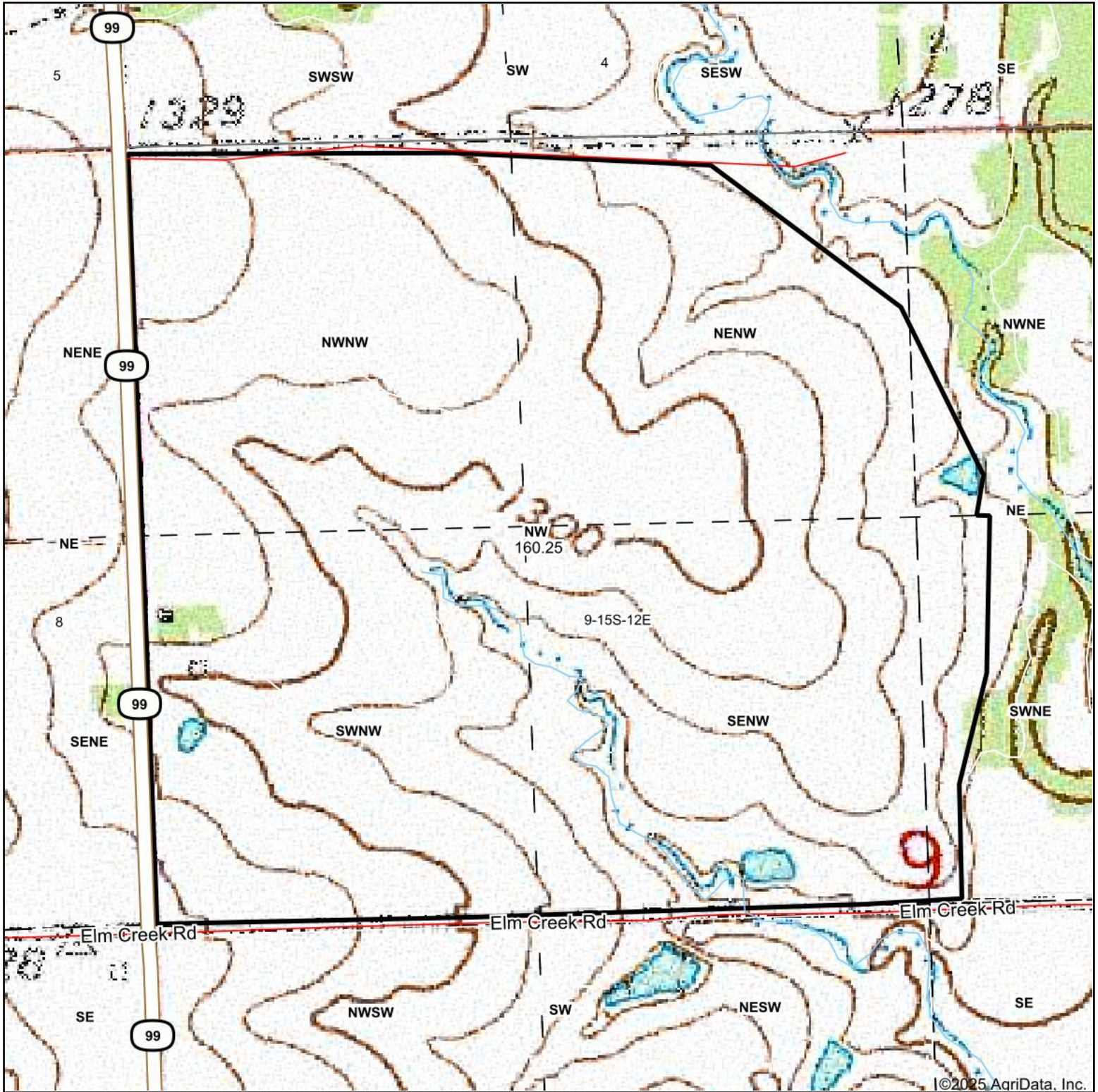


9-15S-12E
Wabaunsee County
Kansas



1/20/2025

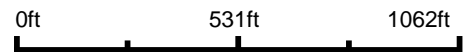
Topography Map



©2025 AgriData, Inc.



Map Center: 38° 45' 51.87, -96° 5' 20.93



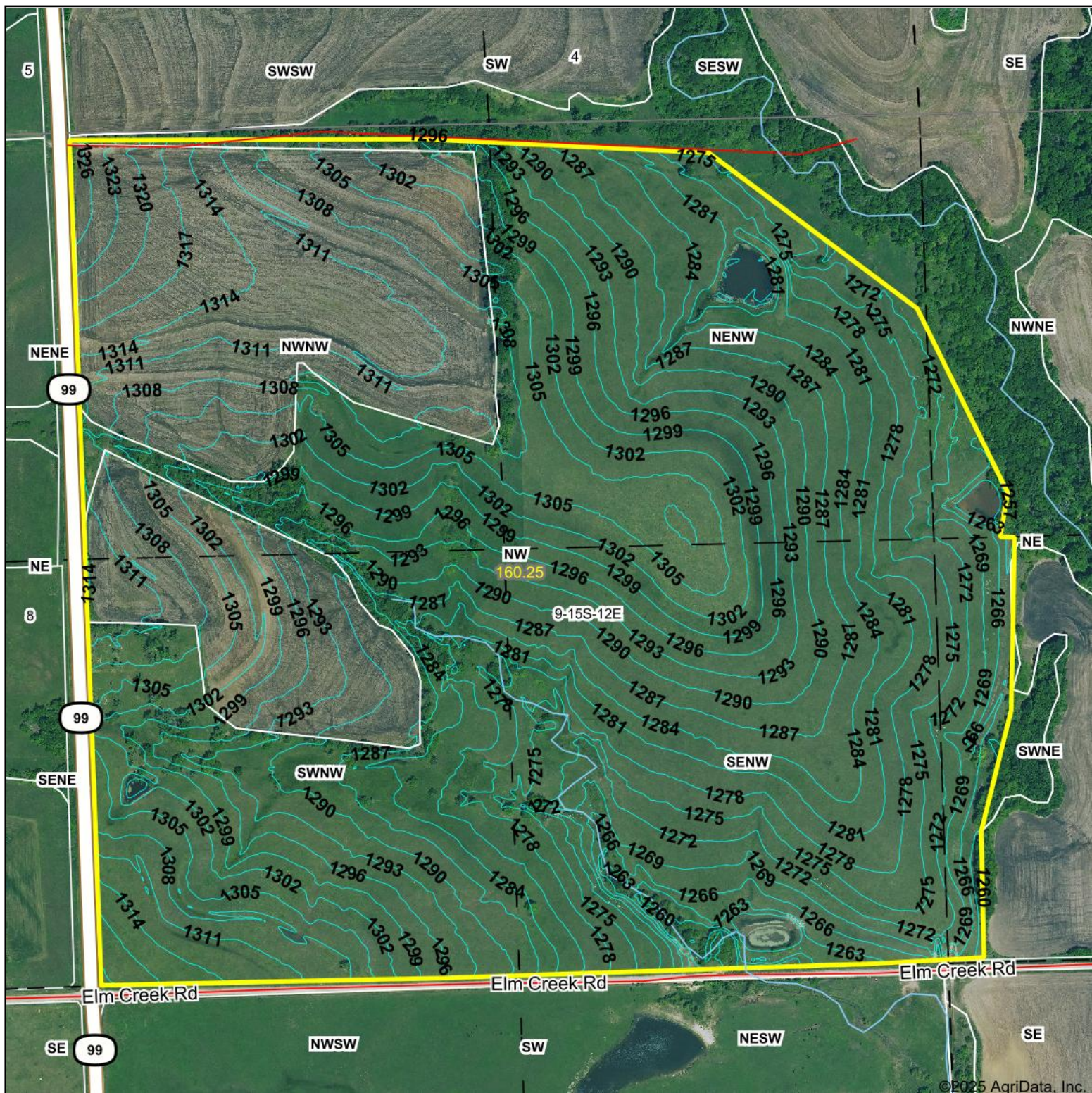
9-15S-12E
Wabaunsee County
Kansas



1/20/2025

Field borders provided by Farm Service Agency as of 5/21/2008.

Topography Contours



©2025 AgriData, Inc.



Source: USGS 1 meter dem

Interval(ft): 3.0

Min: 1,254.3

Max: 1,328.9

Range: 74.6

Average: 1,292.9

Standard Deviation: 14.83 ft



1/20/2025

9-15S-12E
Wabaunsee County
Kansas

Boundary Center: 38° 45' 52.52, -96° 5' 20.18

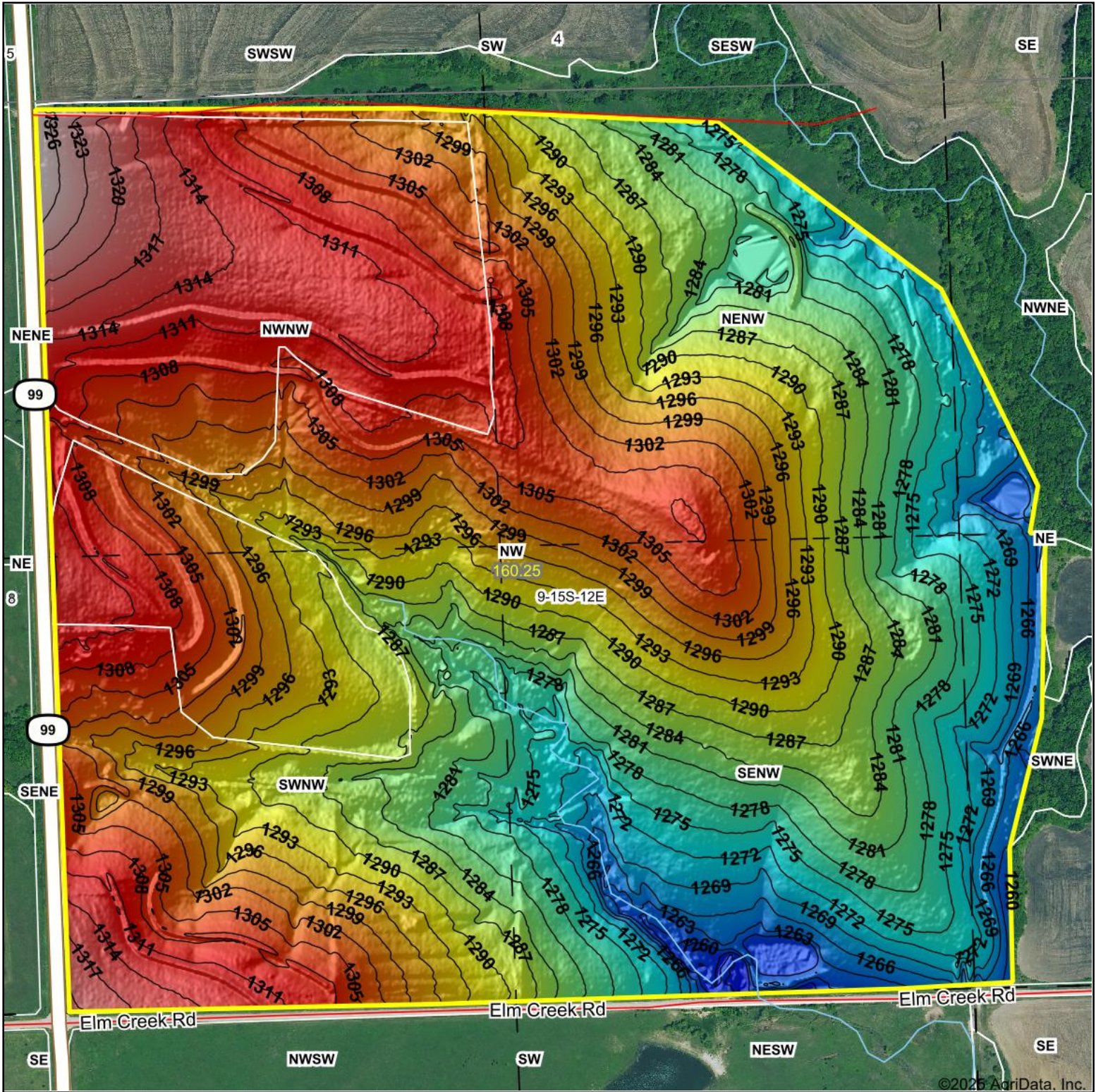
Maps Provided By:



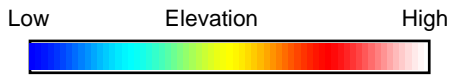
© AgriData, Inc. 2023 www.AgrIDataInc.com

Field borders provided by Farm Service Agency as of 5/21/2008.

Topography Hillshade



©2025 AgriData, Inc.



Source: USGS 1 meter dem



Interval(ft): 3

Min: 1,254.3

Max: 1,328.9

Range: 74.6

Average: 1,292.9

Standard Deviation: 14.83 ft



1/20/2025

9-15S-12E
Wabaunsee County
Kansas

Boundary Center: 38° 45' 52.52, -96° 5' 20.18



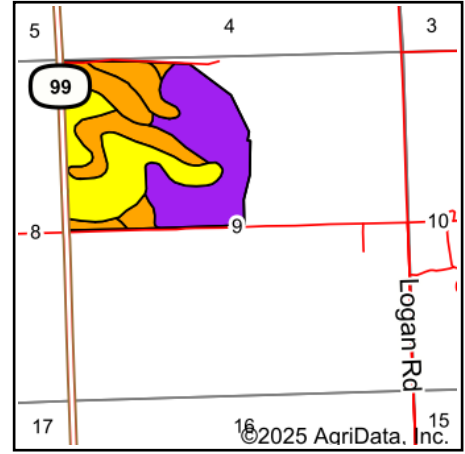
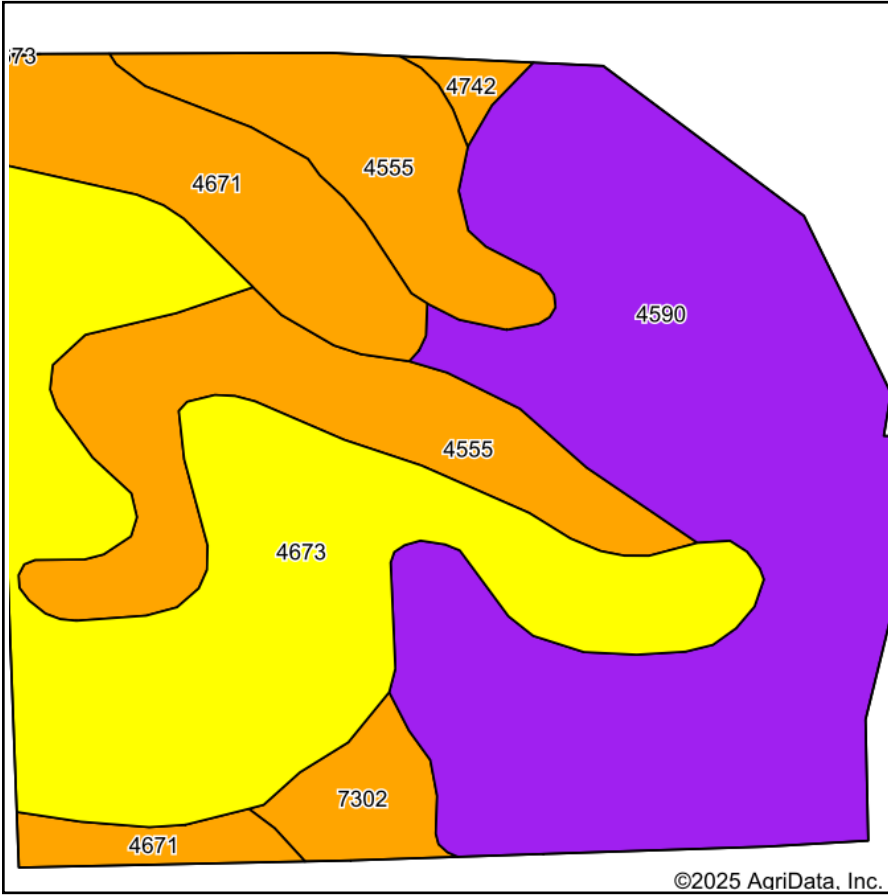
Maps Provided By:



© AgriData, Inc. 2023 www.AgridataInc.com

Field borders provided by Farm Service Agency as of 5/21/2008.

Soils Map



State: **Kansas**
 County: **Wabaunsee**
 Location: **9-15S-12E**
 Township: **Wilmington**
 Acres: **160.25**
 Date: **1/20/2025**



Maps Provided By:

 CUSTOMIZED ONLINE MAPPING
 © AgriData, Inc. 2023 www.AgriDataInc.com



Area Symbol: KS197, Soil Area Version: 25

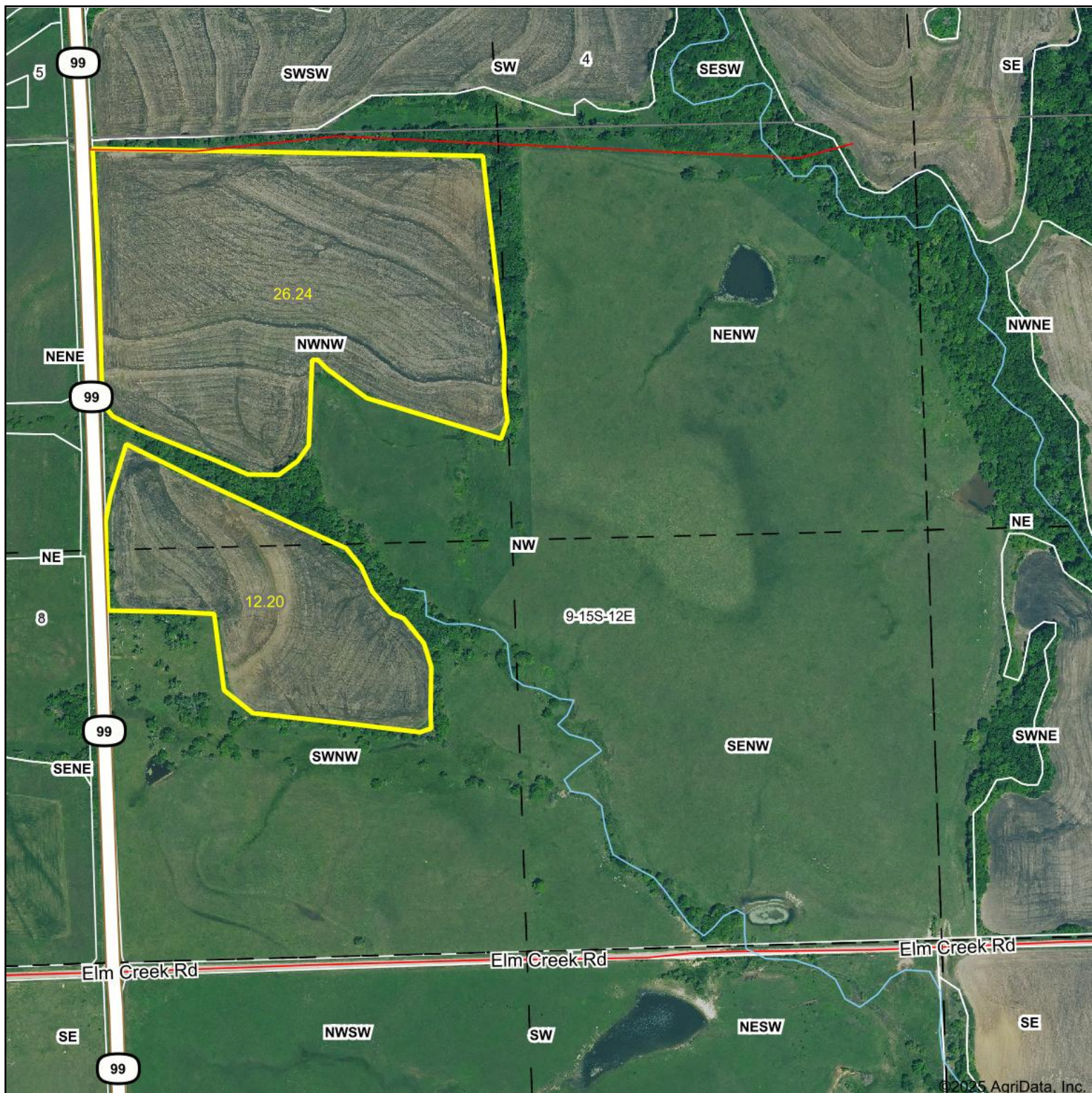
Code	Soil Description	Acres	Percent of field	Non-Irr Class Legend	Non-Irr Class *c	Irr Class *c	*n NCCPI Soybeans
4590	Clime-Sogn complex, 3 to 20 percent slopes	62.35	38.9%		Vle		33
4673	Irwin silty clay loam, 3 to 7 percent slopes	46.45	29.0%		IVe	IVe	57
4555	Clime silty clay loam, 3 to 7 percent slopes	29.56	18.4%		IIle	IIle	43
4671	Irwin silty clay loam, 1 to 3 percent slopes	16.31	10.2%		IIIs	IIIs	55
7302	Martin silty clay loam, 3 to 7 percent slopes	4.48	2.8%		IIle		47
4742	Labette silty clay loam, 3 to 7 percent slopes	1.10	0.7%		IIle	Ile	43
Weighted Average					4.46	*-	*n 44.5

*n: The aggregation method is "Weighted Average using all components"

*c: Using Capabilities Class Dominant Condition Aggregation Method

*- Irr Class weighted average cannot be calculated on the current soils data due to missing data.

Aerial Map



Boundary Center: 38° 45' 56, -96° 5' 30.2



9-15S-12E
Wabaunsee County
Kansas



Maps Provided By:

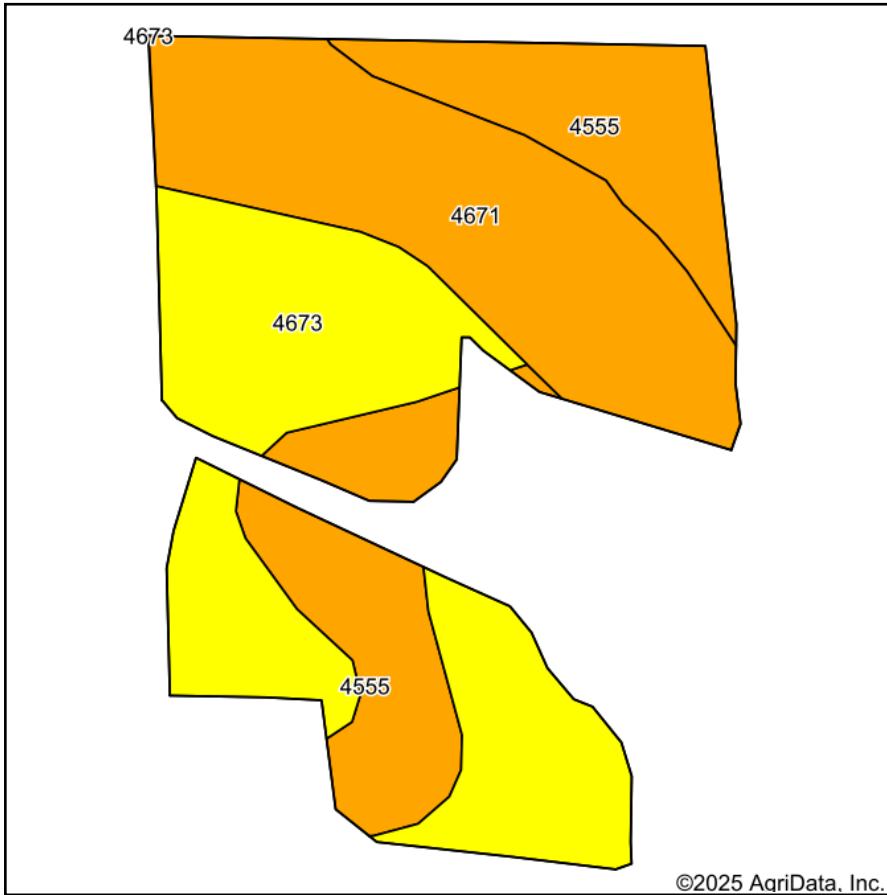


© AgriData, Inc. 2023 www.AgriDataInc.com

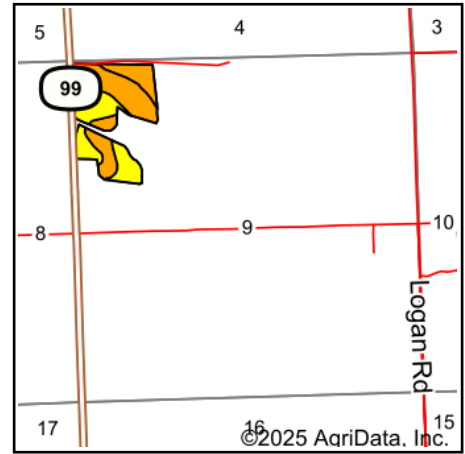
1/20/2025

Field borders provided by Farm Service Agency as of 5/21/2008.

Soils Map



Soils data provided by USDA and NRCS.



State: **Kansas**
 County: **Wabaunsee**
 Location: **9-15S-12E**
 Township: **Wilmington**
 Acres: **38.44**
 Date: **1/20/2025**



Maps Provided By:



Area Symbol: KS197, Soil Area Version: 25

Code	Soil Description	Acres	Percent of field	Non-Irr Class Legend	Non-Irr Class *c	Irr Class *c	*n NCCPI Soybeans
4673	Irwin silty clay loam, 3 to 7 percent slopes	14.89	38.7%		IVe	IVe	57
4671	Irwin silty clay loam, 1 to 3 percent slopes	12.49	32.5%		IIIs	IIIs	55
4555	Clime silty clay loam, 3 to 7 percent slopes	11.06	28.8%		IIIe	IIIe	43
Weighted Average					3.39	3.39	*n 52.3

*n: The aggregation method is "Weighted Average using all components"

*c: Using Capabilities Class Dominant Condition Aggregation Method

Soils data provided by USDA and NRCS.