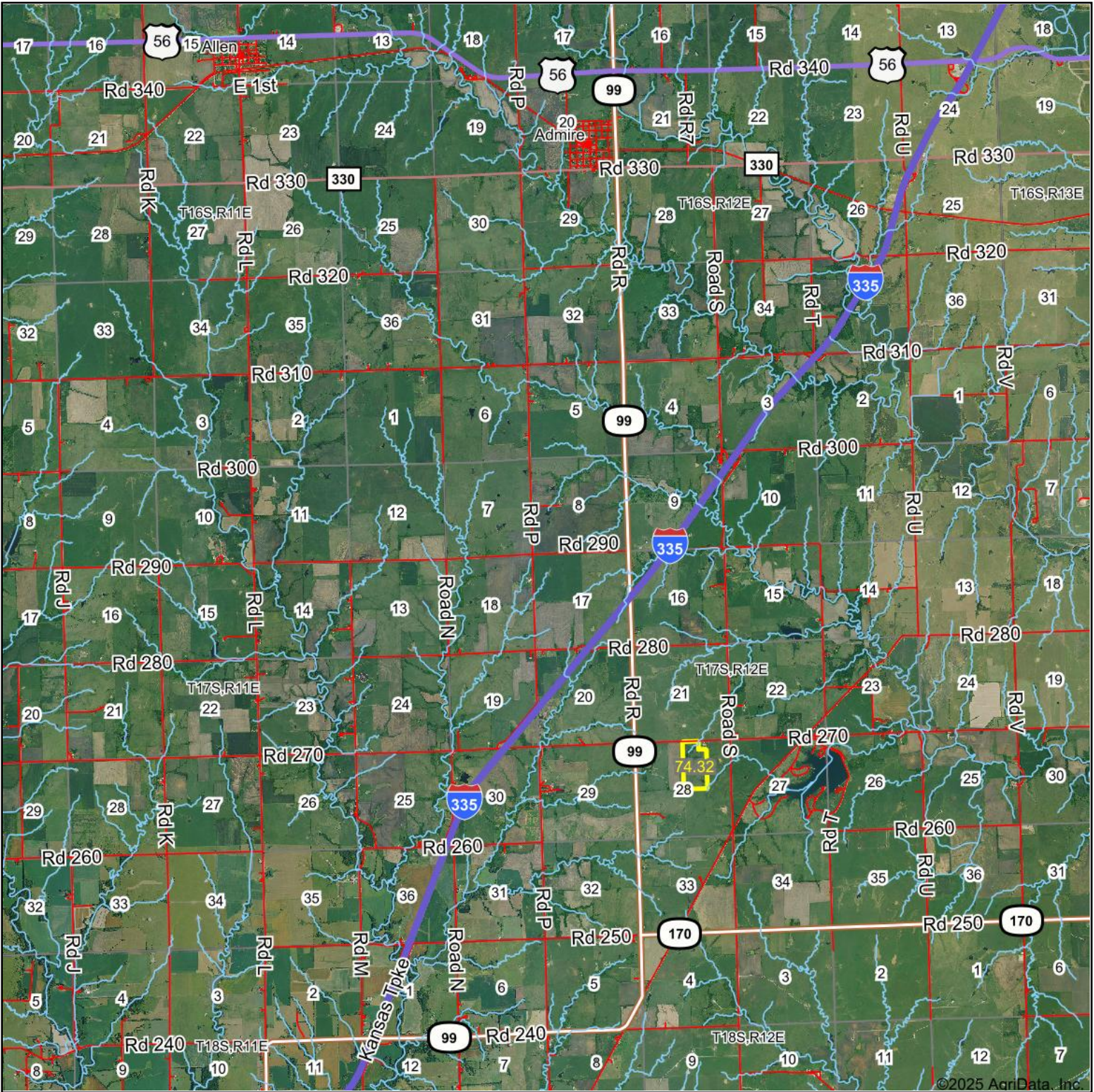


# Aerial Map



©2025 AgriData, Inc.



Boundary Center: 38° 32' 47.3, -96° 5' 9.87



**28-17S-12E**  
**Lyon County**  
**Kansas**



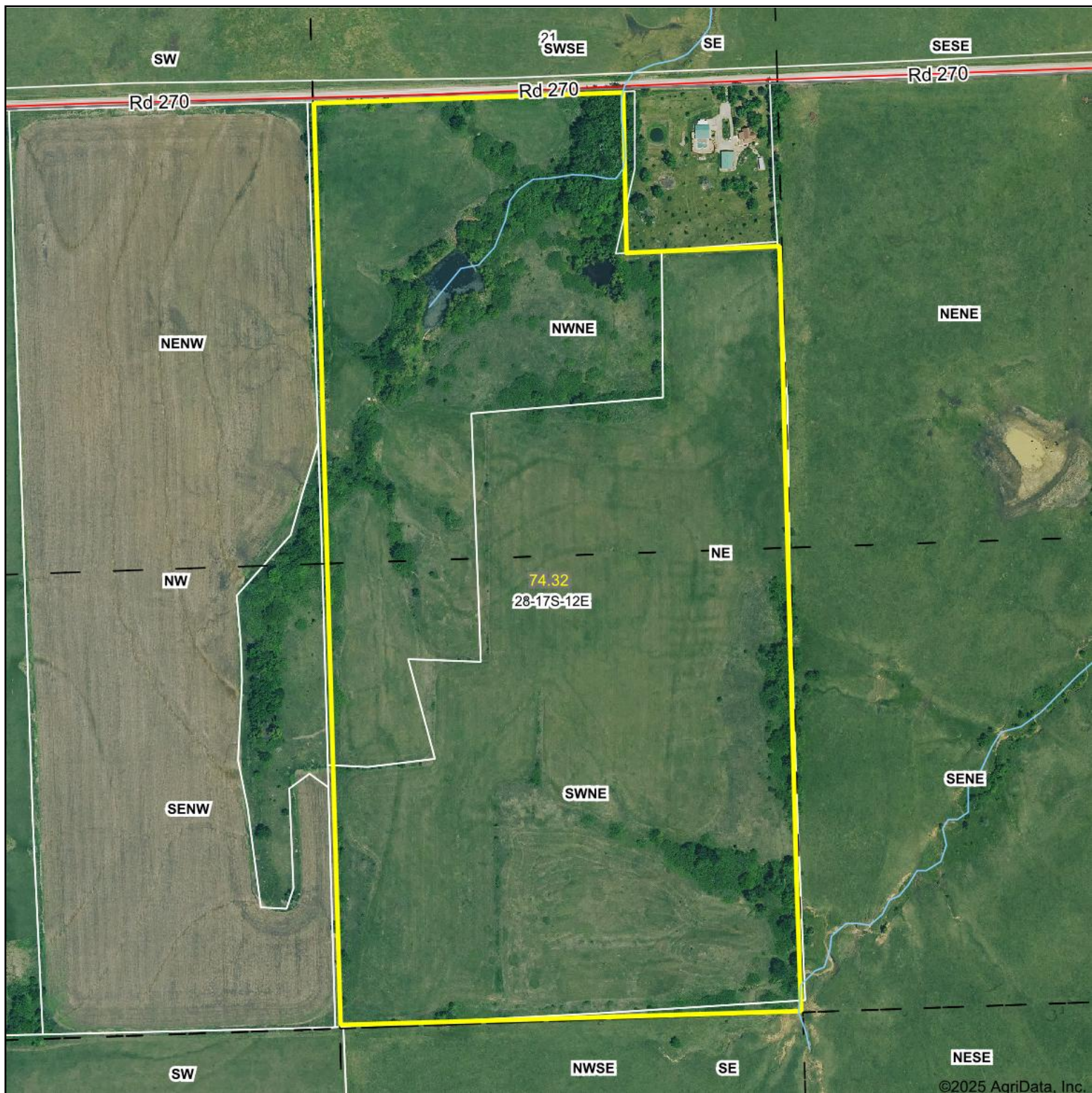
Maps Provided By:



CUSTOMIZED ONLINE MAPPING  
© AgriData, Inc. 2023 www.AgriDataInc.com

Field borders provided by Farm Service Agency as of 5/21/2008.

# Aerial Map



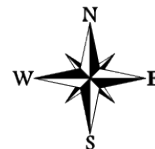
©2025 AgriData, Inc.



Boundary Center: 38° 32' 47.3, -96° 5' 9.87



**28-17S-12E**  
**Lyon County**  
**Kansas**



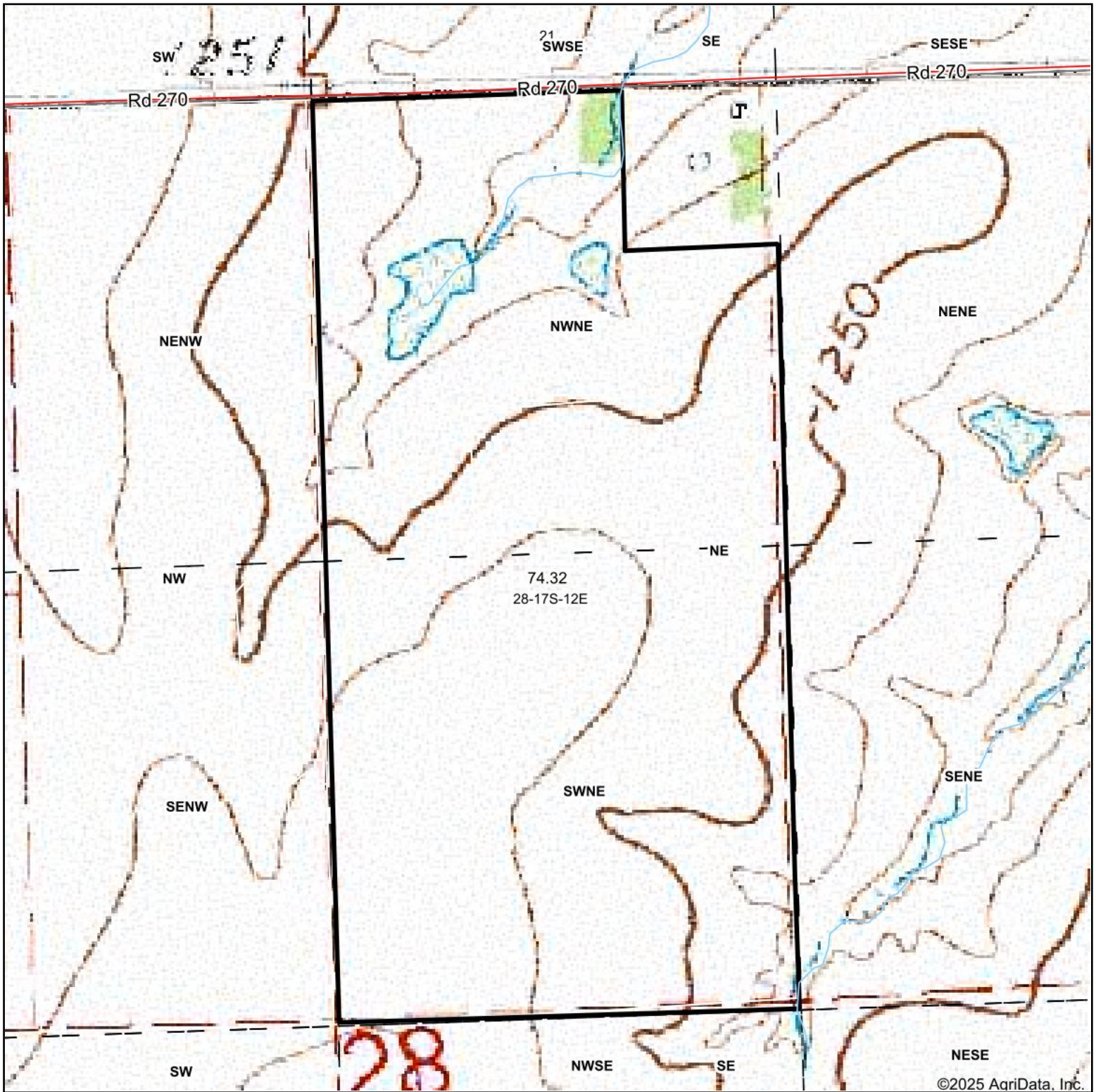
Maps Provided By:



© AgriData, Inc. 2023 www.AgriDataInc.com

Field borders provided by Farm Service Agency as of 5/21/2008.

# Topography Map



©2025 AgriData, Inc.



Map Center: 38° 32' 47.5, -96° 5' 10.18



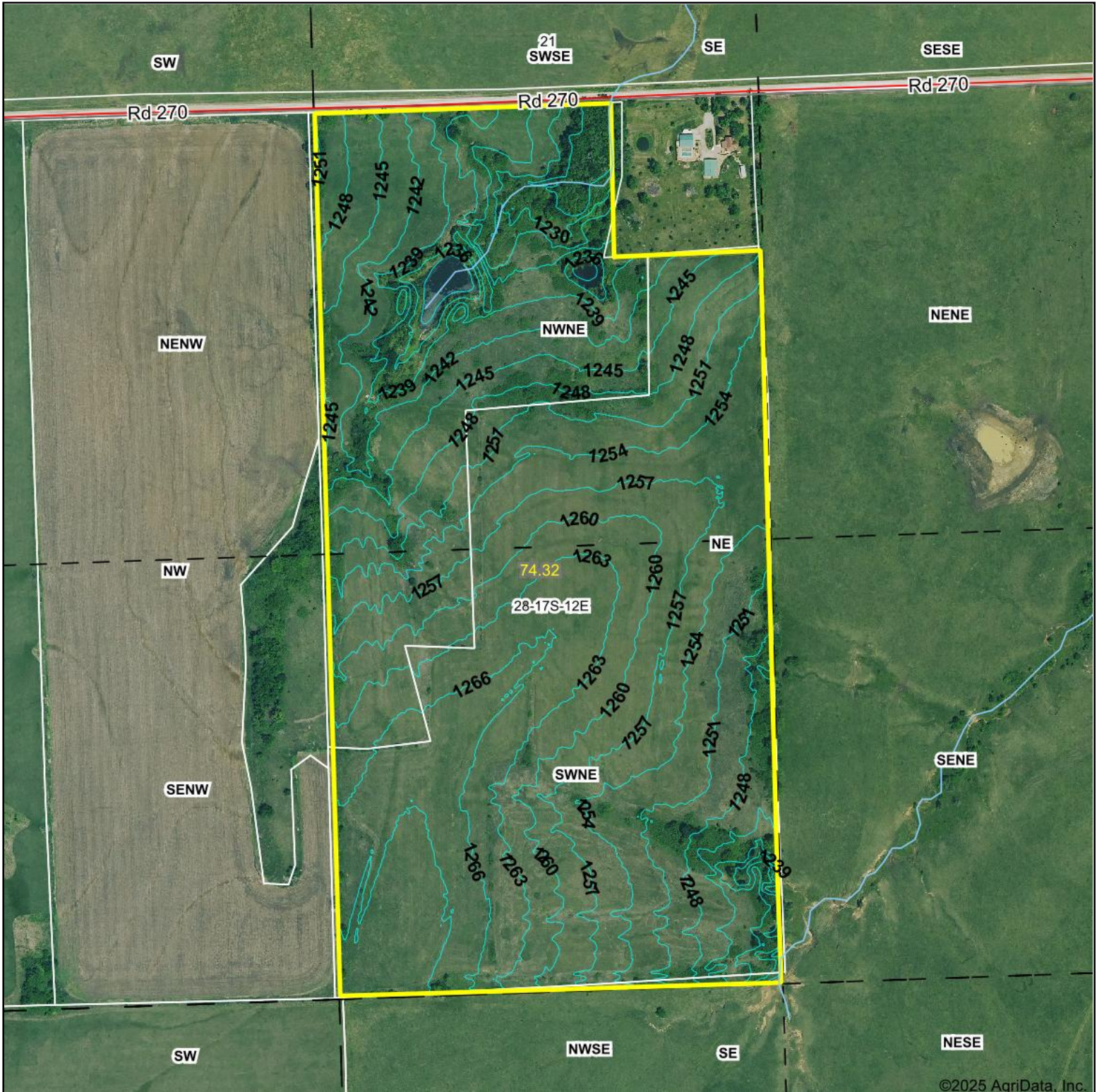
**28-17S-12E**  
**Lyon County**  
**Kansas**



Maps Provided By:  
 **surety**  
CUSTOMIZED ONLINE MAPPING  
© AgriData, Inc. 2023      www.AgriDataInc.com

Field borders provided by Farm Service Agency as of 5/21/2008.

# Topography Contours



©2025 AgriData, Inc.

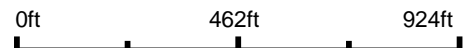


Maps Provided By:



© AgriData, Inc. 2023 www.AgridataInc.com

Source: USGS 1 meter dem  
 Interval(ft): 3.0  
 Min: 1,224.2  
 Max: 1,271.0  
 Range: 46.8  
 Average: 1,252.5  
 Standard Deviation: 10.6 ft

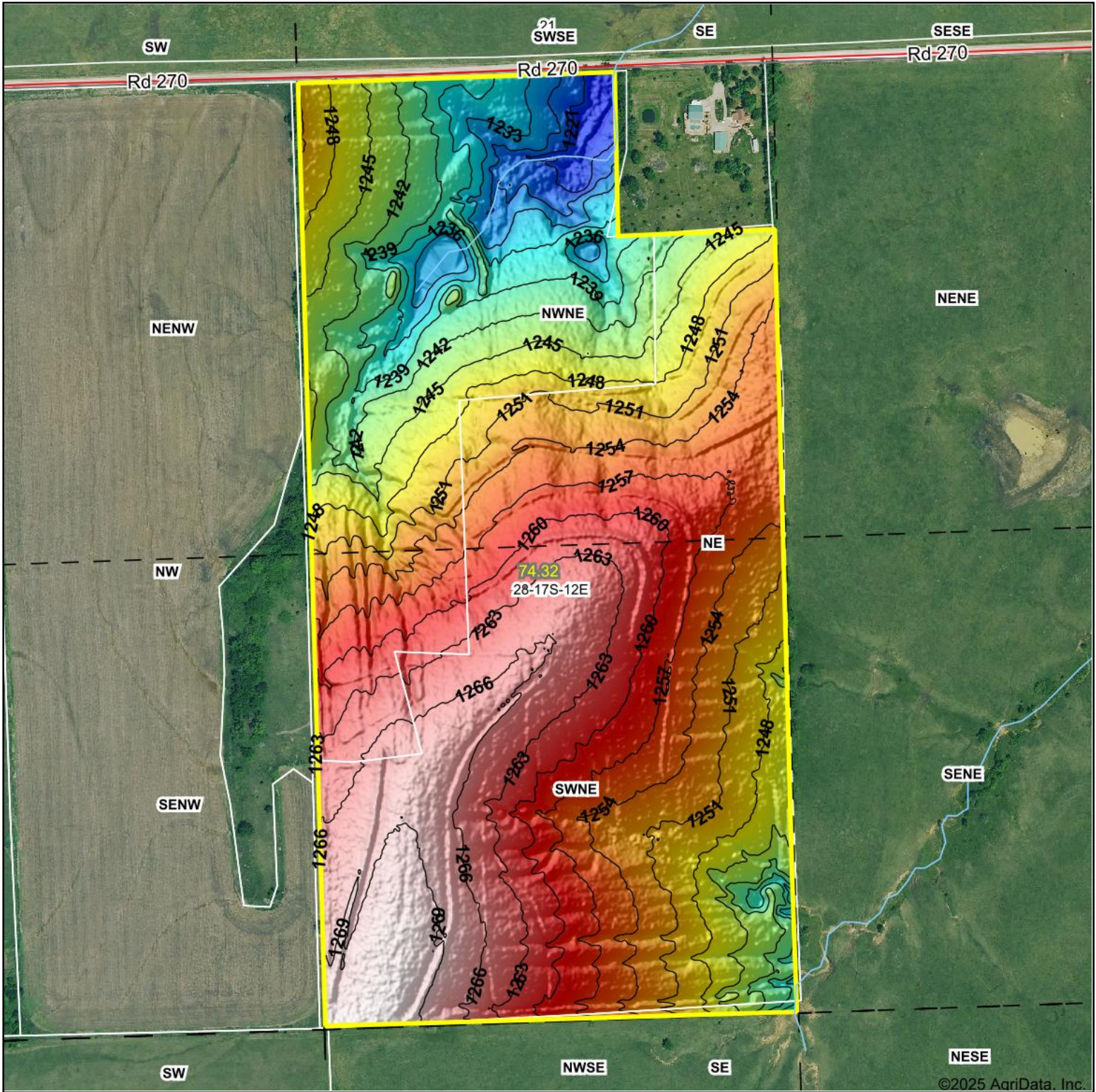


**28-17S-12E**  
**Lyon County**  
**Kansas**

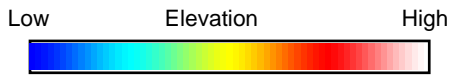
Boundary Center: 38° 32' 47.3, -96° 5' 9.87

Field borders provided by Farm Service Agency as of 5/21/2008.

# Topography Hillshade



©2025 AgriData, Inc.



Source: USGS 1 meter dem



Interval(ft): 3

Min: 1,224.2

Max: 1,271.0

Range: 46.8

Average: 1,252.5

Standard Deviation: 10.6 ft



**28-17S-12E**  
**Lyon County**  
**Kansas**

Boundary Center: 38° 32' 47.3, -96° 5' 9.87



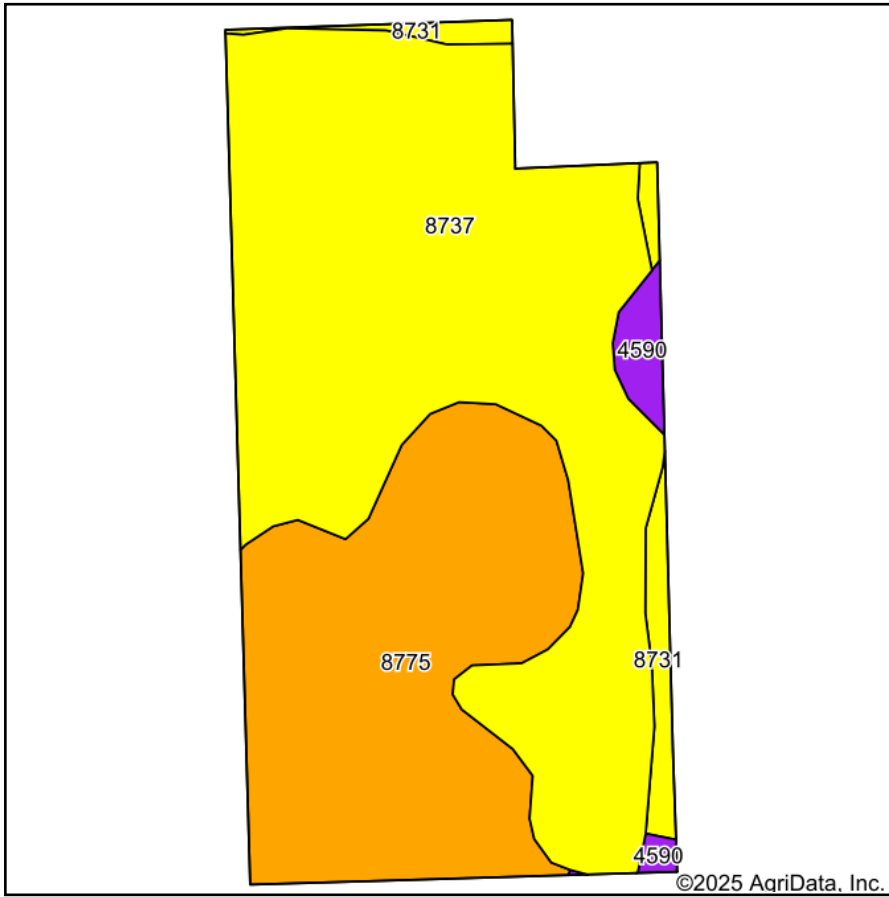
Maps Provided By:



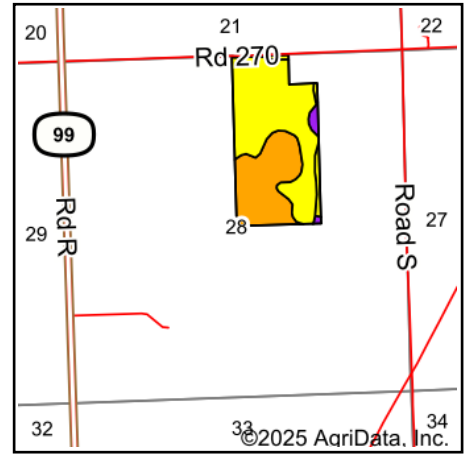
© AgriData, Inc. 2023 www.AgriDataInc.com

Field borders provided by Farm Service Agency as of 5/21/2008.

# Soils Map



Soils data provided by USDA and NRCS.



State: **Kansas**  
 County: **Lyon**  
 Location: **28-17S-12E**  
 Township: **Reading**  
 Acres: **74.32**  
 Date:



Area Symbol: KS111, Soil Area Version: 23

Code	Soil Description	Acres	Percent of field	Non-Irr Class Legend	Non-Irr Class *c	Warm season grasses AUM	*n NCCPI Soybeans
8737	Eram silty clay loam, 3 to 7 percent slopes, eroded	44.02	59.3%		IVe	1	27
8775	Kenoma silt loam, 1 to 3 percent slopes	26.17	35.2%		IIIe		59
8731	Eram silt loam, 3 to 7 percent slopes	2.63	3.5%		IVe		32
4590	Clime-Sogn complex, 3 to 20 percent slopes	1.50	2.0%		VIe		33
<b>Weighted Average</b>					<b>3.69</b>	<b>0.6</b>	<b>*n 38.6</b>

\*n: The aggregation method is "Weighted Average using all components"

\*c: Using Capabilities Class Dominant Condition Aggregation Method