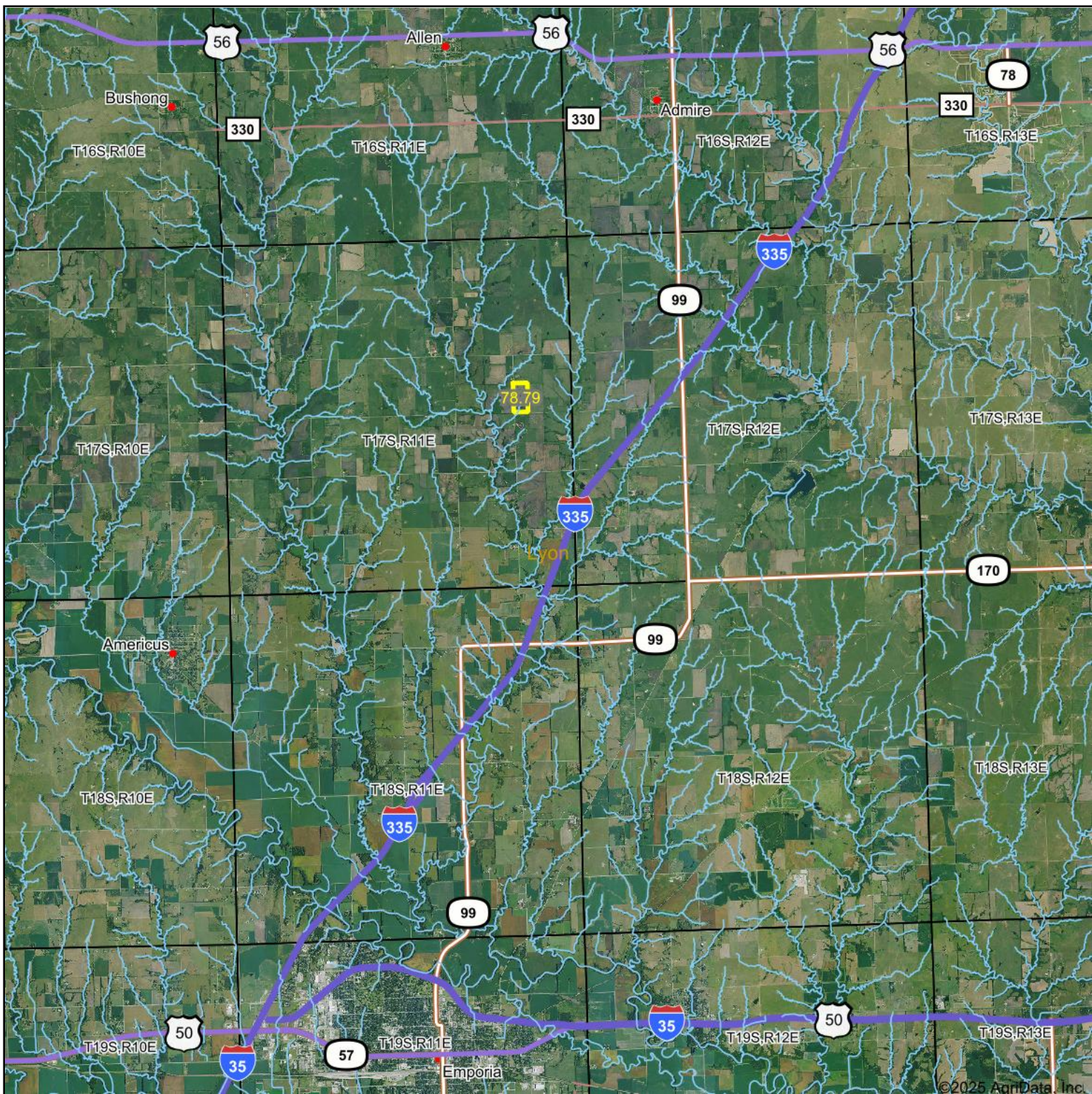


# Aerial Map



©2025 AgriData, Inc.



Boundary Center: 38° 34' 5.03, -96° 8' 56.46



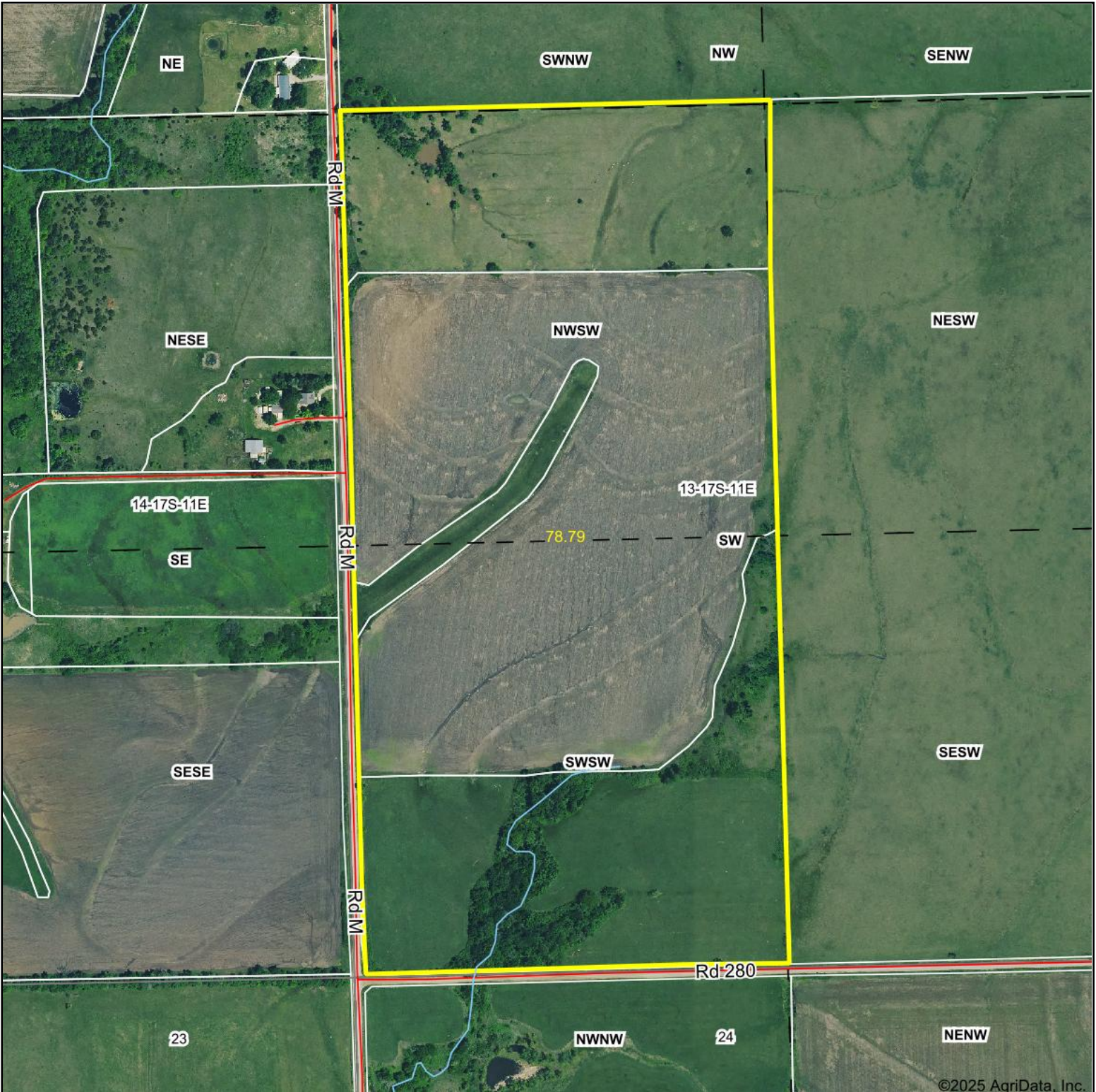
13-17S-11E  
Lyon County  
Kansas



Maps Provided By:  
  
CUSTOMIZED ONLINE MAPPING  
© AgriData, Inc. 2023      www.AgriDataInc.com

Field borders provided by Farm Service Agency as of 5/21/2008.

# Aerial Map



Boundary Center: 38° 34' 5.03, -96° 8' 56.46



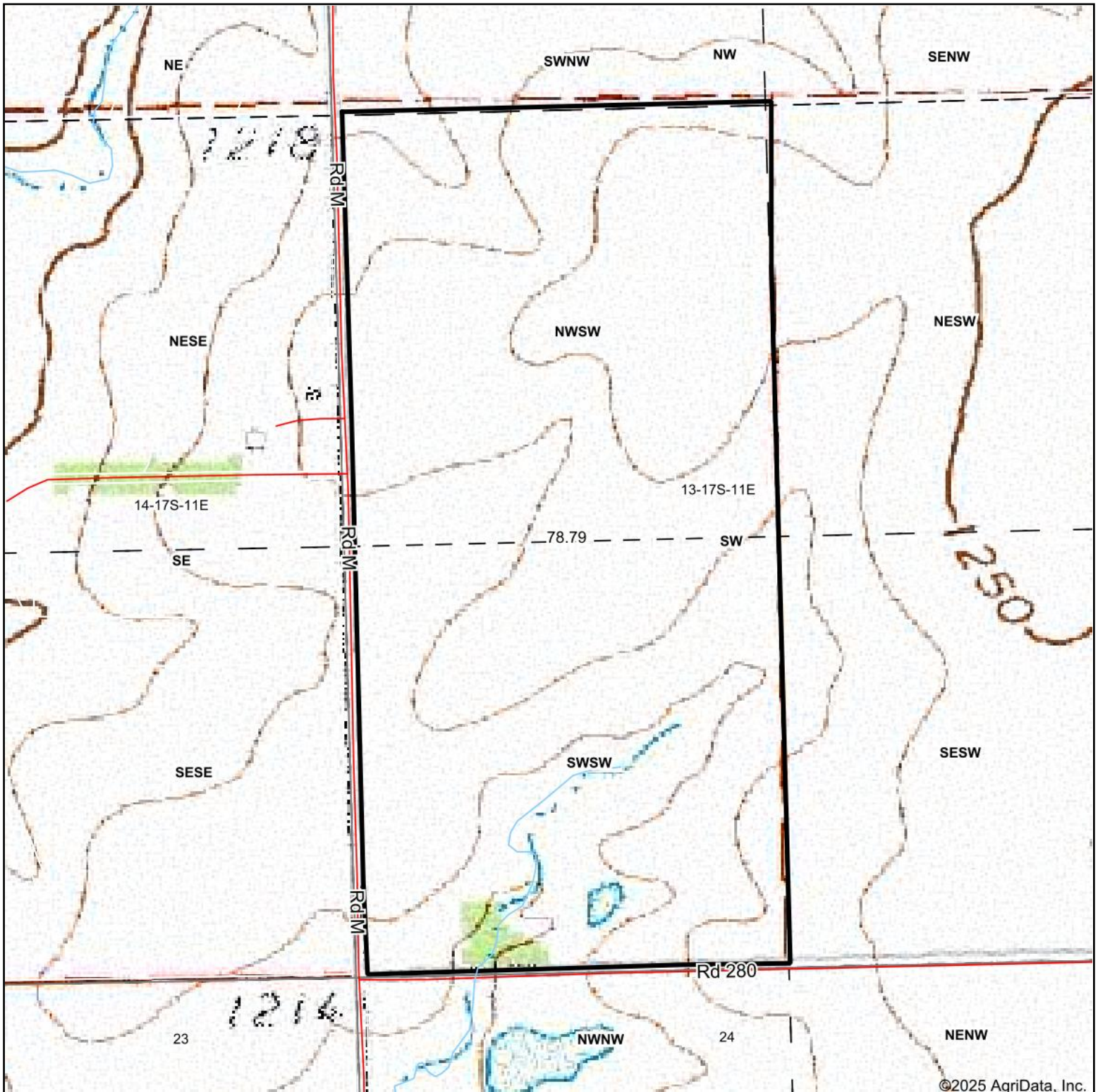
13-17S-11E  
Lyon County  
Kansas



Maps Provided By:  
 **surety**  
CUSTOMIZED ONLINE MAPPING  
© AgriData, Inc. 2023 www.AgriDataInc.com

Field borders provided by Farm Service Agency as of 5/21/2008.

# Topography Map



©2025 AgriData, Inc.



Map Center: 38° 34' 4.72, -96° 8' 57.27

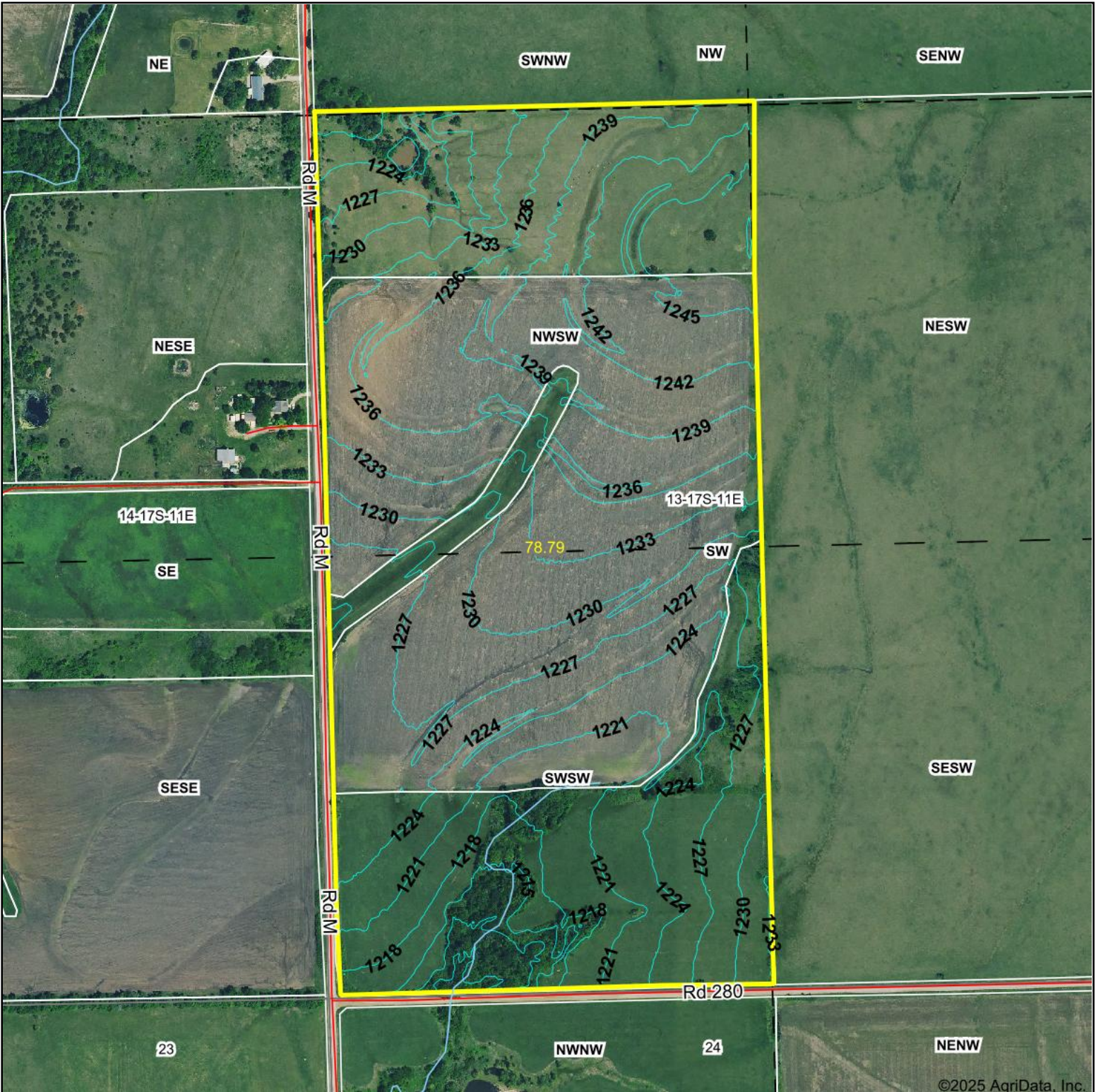


**13-17S-11E**  
**Lyon County**  
**Kansas**



Maps Provided By:  
 **surety**  
CUSTOMIZED ONLINE MAPPING  
© AgriData, Inc. 2023      www.AgriDataInc.com

# Topography Contours



©2025 AgriData, Inc.



Source: USGS 1 meter dem  
 Interval(ft): 3.0  
 Min: 1,206.6  
 Max: 1,248.3  
 Range: 41.7  
 Average: 1,230.2  
 Standard Deviation: 8.27 ft

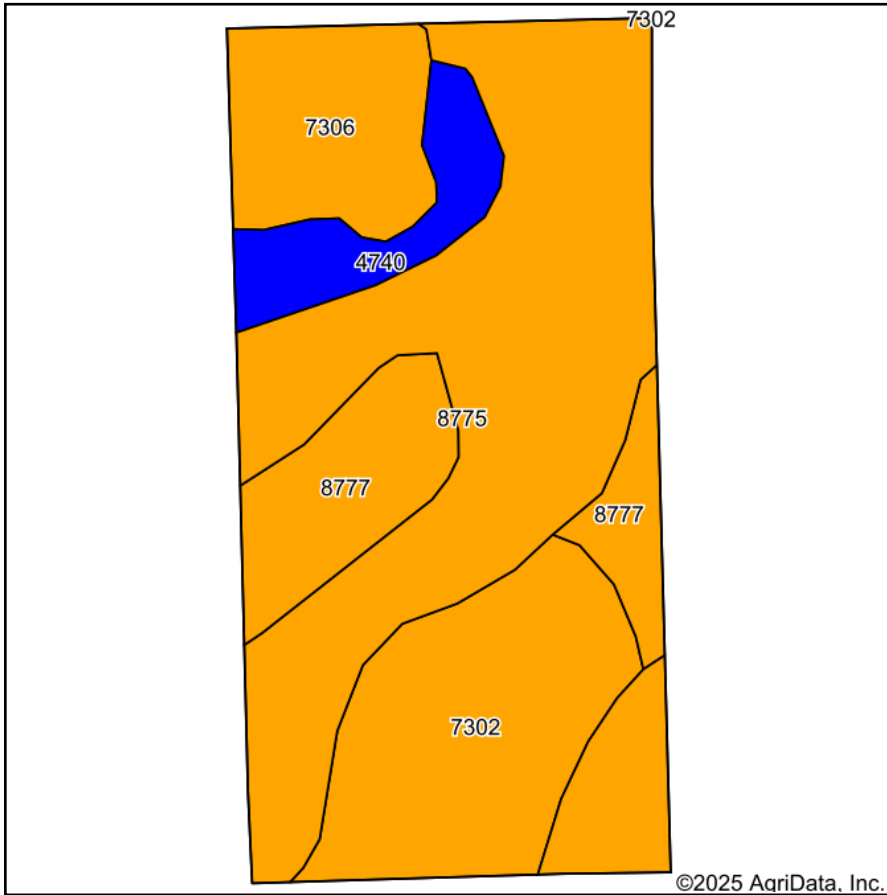


**13-17S-11E**  
**Lyon County**  
**Kansas**

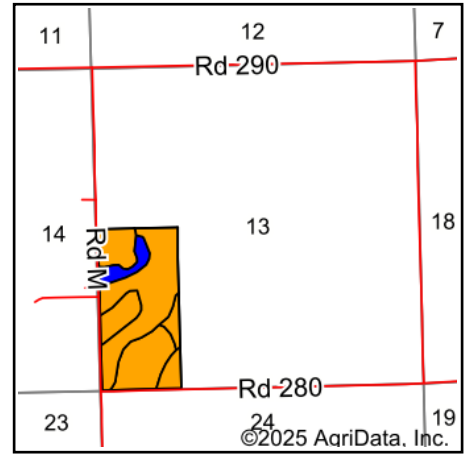
Boundary Center: 38° 34' 5.03, -96° 8' 56.46



# Soils Map



Soils data provided by USDA and NRCS.



State: **Kansas**  
 County: **Lyon**  
 Location: **13-17S-11E**  
 Township: **Fremont**  
 Acres: **78.79**  
 Date:



Area Symbol: KS111, Soil Area Version: 23

Code	Soil Description	Acres	Percent of field	Non-Irr Class Legend	Non-Irr Class *c	Irr Class *c	*n NCCPI Soybeans
8775	Kenoma silt loam, 1 to 3 percent slopes	38.13	48.3%		IIle		59
7302	Martin silty clay loam, 3 to 7 percent slopes	16.12	20.5%		IIle	IIle	49
8777	Kenoma silty clay loam, 1 to 3 percent slopes, eroded	10.38	13.2%		IIle		49
7306	Martin silty clay, 3 to 7 percent slopes, eroded	8.79	11.2%		IIle	IIle	42
4740	Labette silty clay loam, 1 to 3 percent slopes	5.37	6.8%		Ile	Ile	43
<b>Weighted Average</b>					<b>2.93</b>	<b>*-</b>	<b>*n 52.6</b>

\*n: The aggregation method is "Weighted Average using all components"

\*c: Using Capabilities Class Dominant Condition Aggregation Method

\*- Irr Class weighted average cannot be calculated on the current soils data due to missing data.