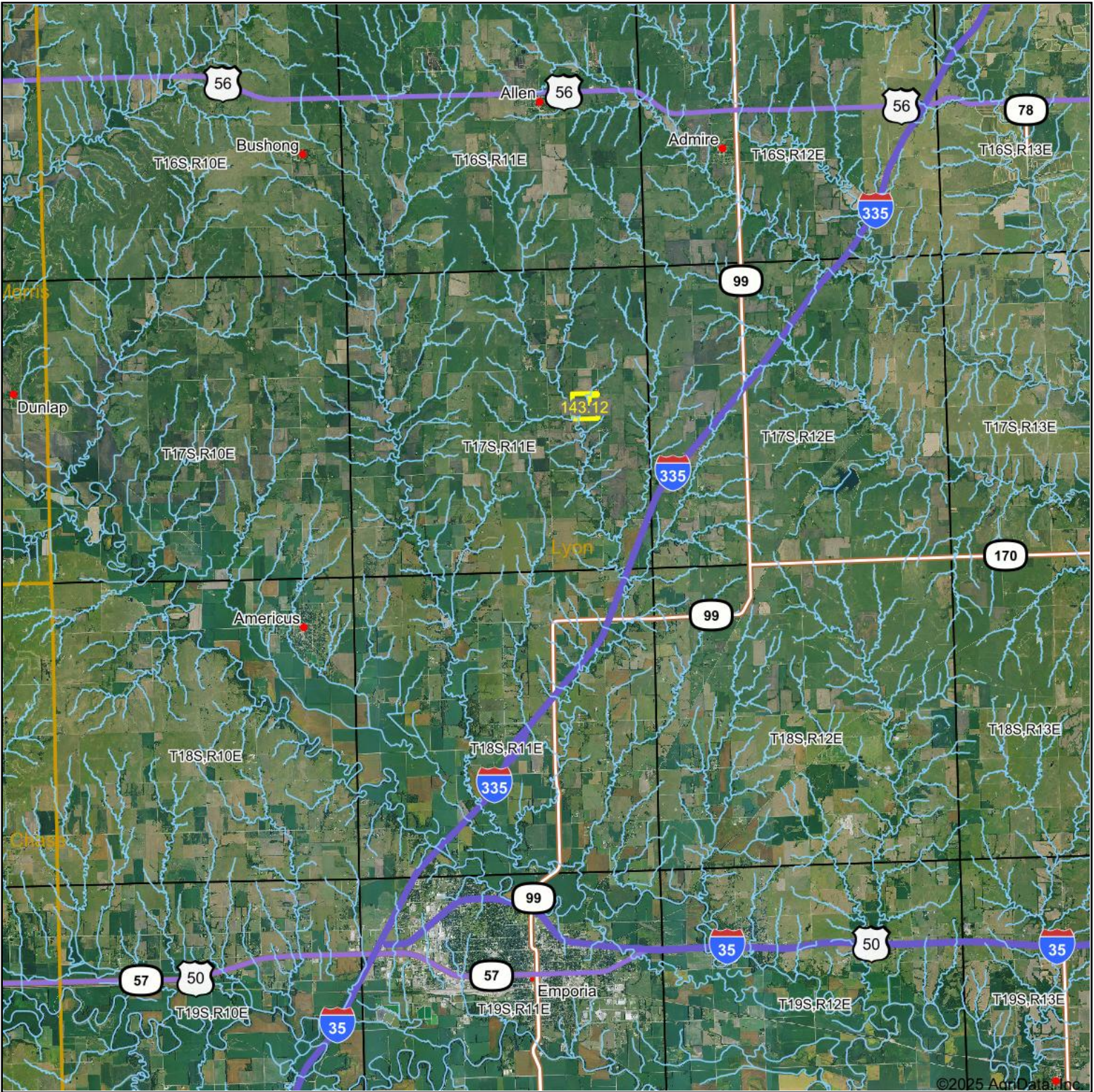


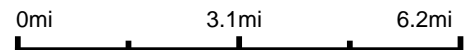
Aerial Map



©2025 AgriData, Inc.



Boundary Center: 38° 34' 5.21, -96° 9' 21.9



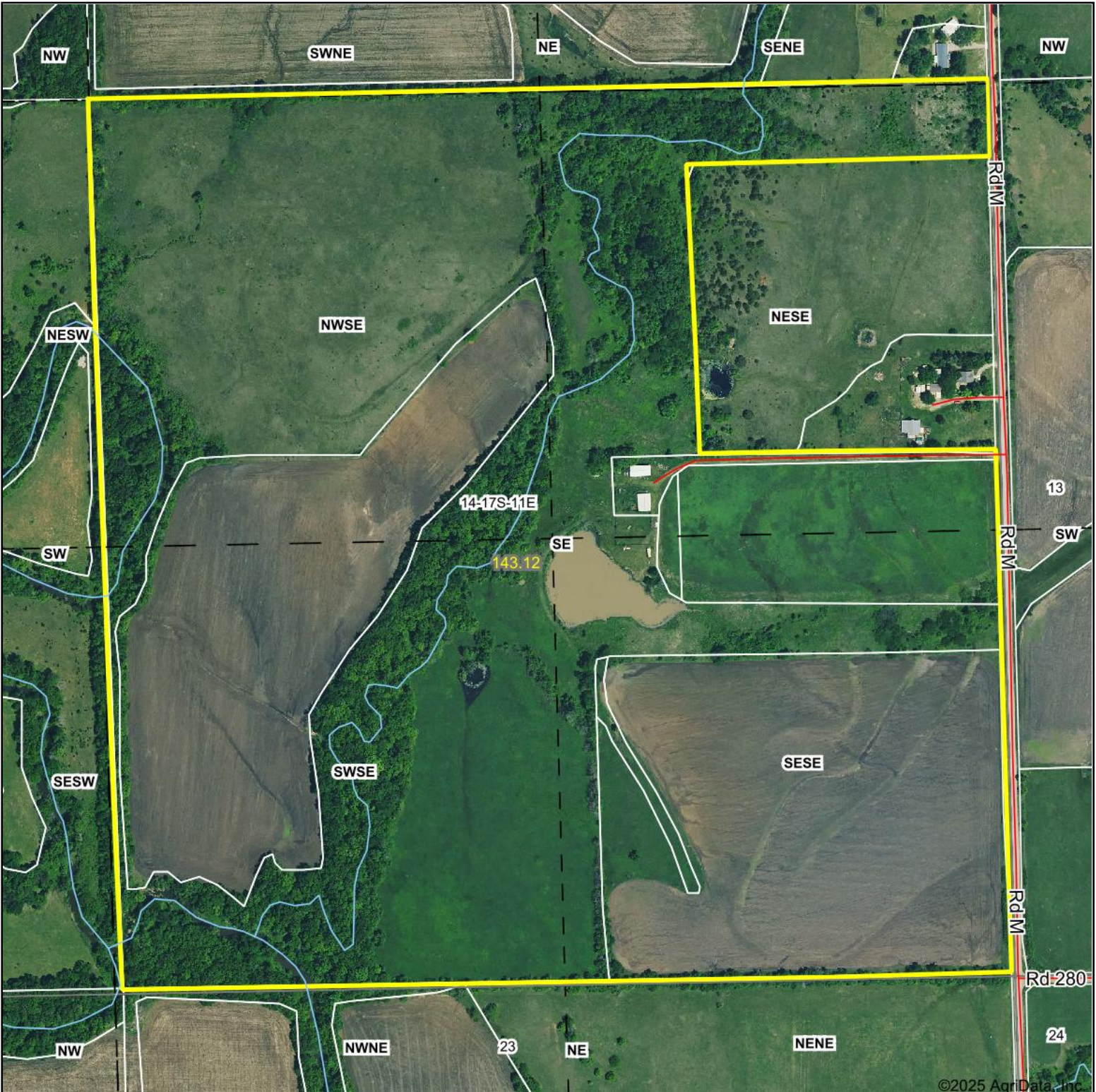
14-17S-11E
Lyon County
Kansas



Maps Provided By:
 **surety**
CUSTOMIZED ONLINE MAPPING
© AgriData, Inc. 2023 www.AgriDataInc.com

Field borders provided by Farm Service Agency as of 5/21/2008.

Aerial Map



©2025 AgriData, Inc.



Boundary Center: 38° 34' 5.21, -96° 9' 21.9



14-17S-11E
Lyon County
Kansas



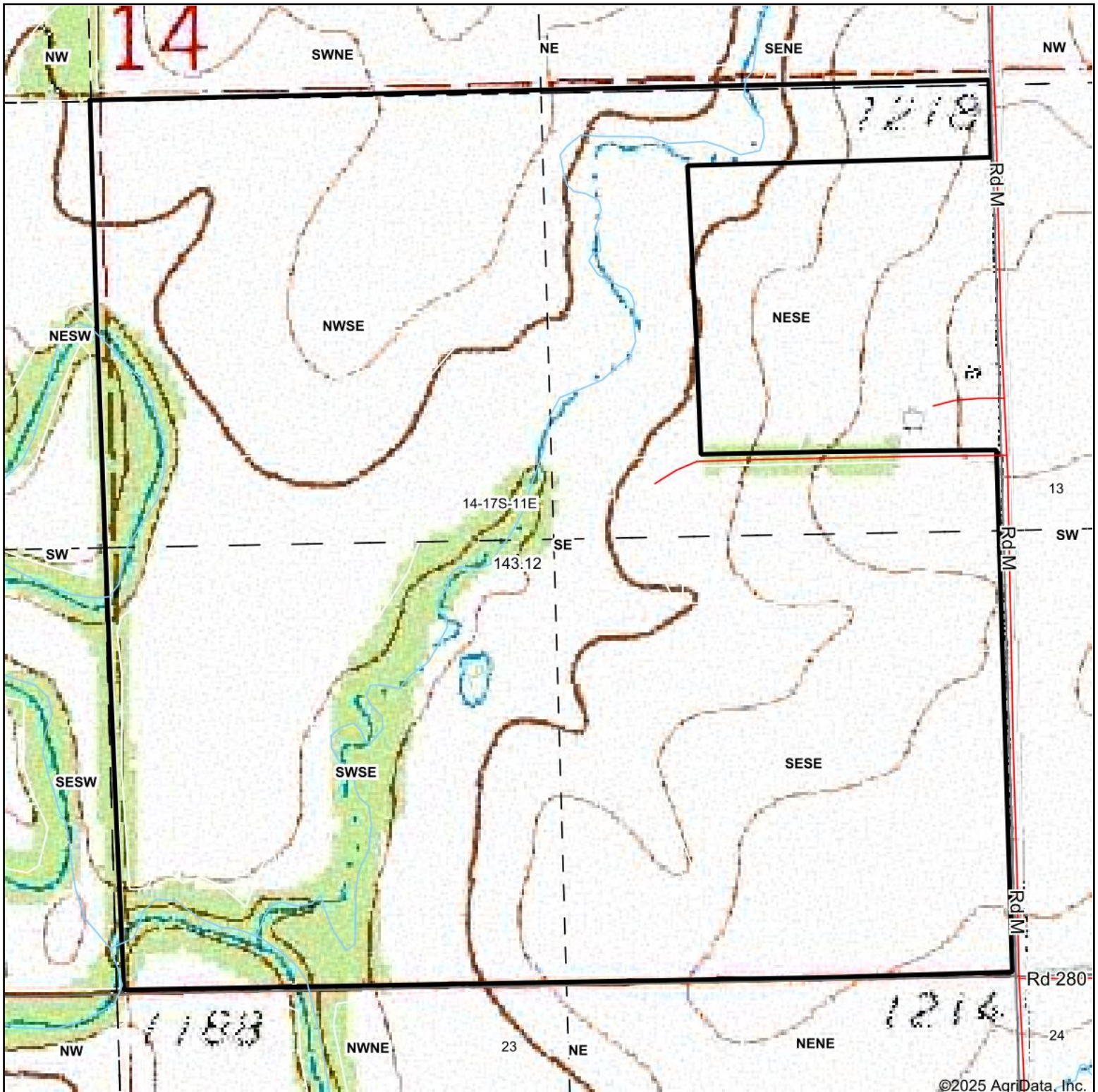
Maps Provided By:



© AgriData, Inc. 2023 www.AgriDataInc.com

Field borders provided by Farm Service Agency as of 5/21/2008.

Topography Map



©2025 AgriData, Inc.



Map Center: 38° 34' 4.86, -96° 9' 22.1



14-17S-11E
Lyon County
Kansas



Maps Provided By:

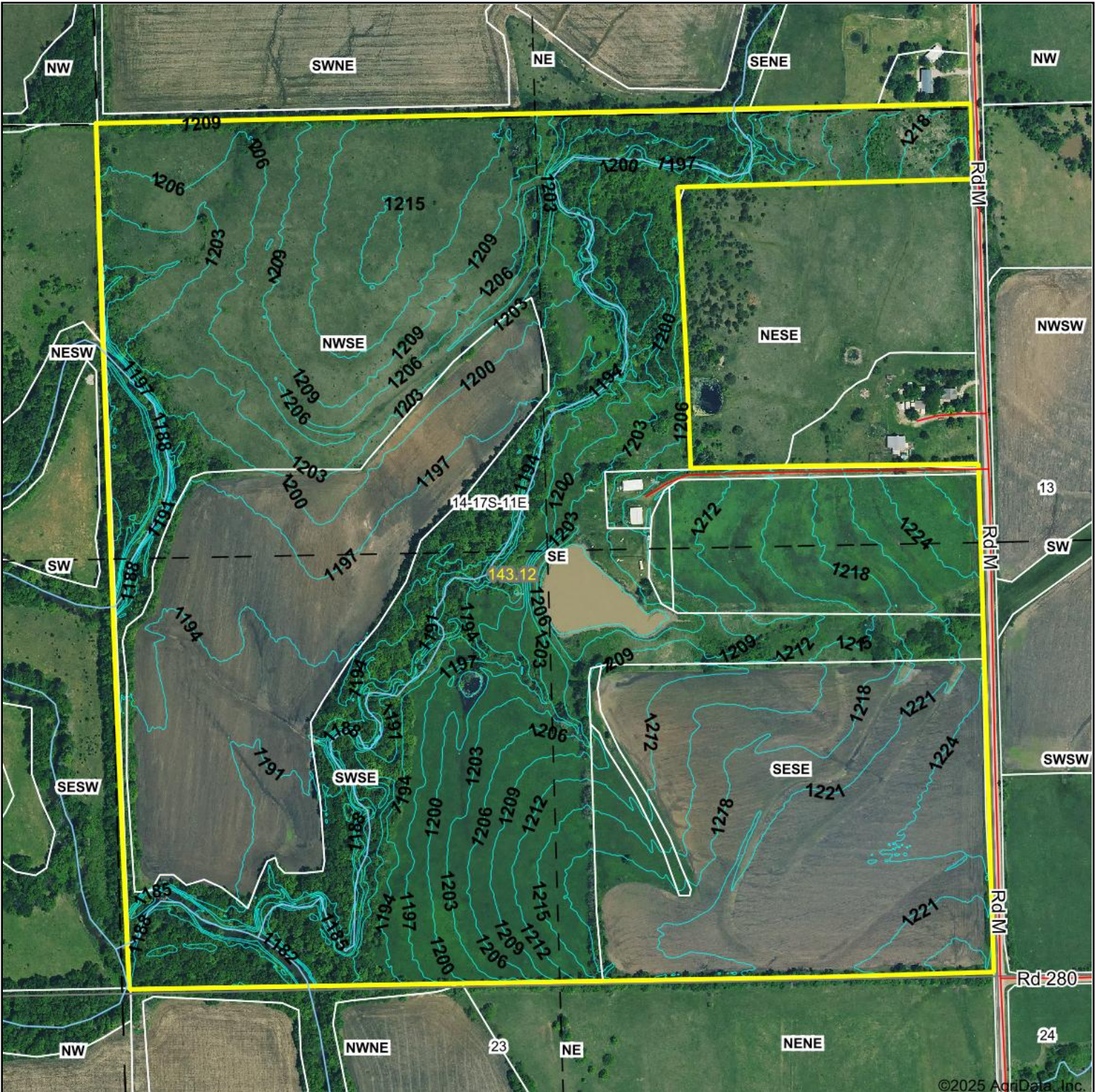


© AgriData, Inc. 2023

www.AgriDataInc.com

Field borders provided by Farm Service Agency as of 5/21/2008.

Topography Contours



©2025 AgriData, Inc.



Source: USGS 1 meter dem
 Interval(ft): 3.0
 Min: 1,179.3
 Max: 1,230.4
 Range: 51.1
 Average: 1,205.7
 Standard Deviation: 10.73 ft

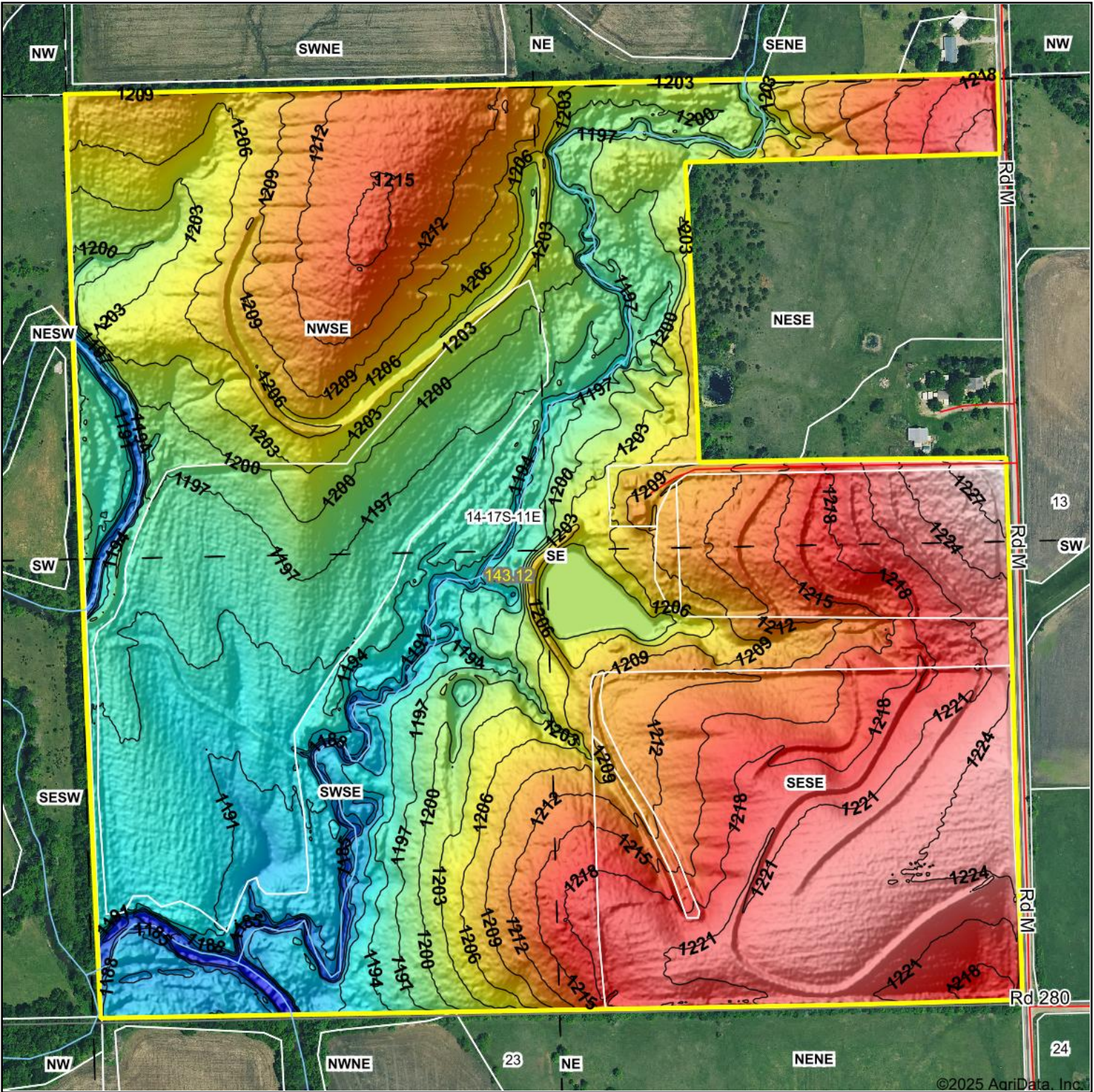


14-17S-11E
Lyon County
Kansas

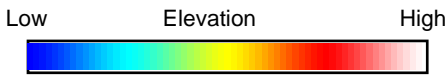
Boundary Center: 38° 34' 5.21, -96° 9' 21.9

Field borders provided by Farm Service Agency as of 5/21/2008.

Topography Hillshade



©2025 AgriData, Inc.



Source: USGS 1 meter dem



Interval(ft): 3

Min: 1,179.3

Max: 1,230.4

Range: 51.1

Average: 1,205.7

Standard Deviation: 10.73 ft



14-17S-11E
Lyon County
Kansas

Boundary Center: 38° 34' 5.21, -96° 9' 21.9



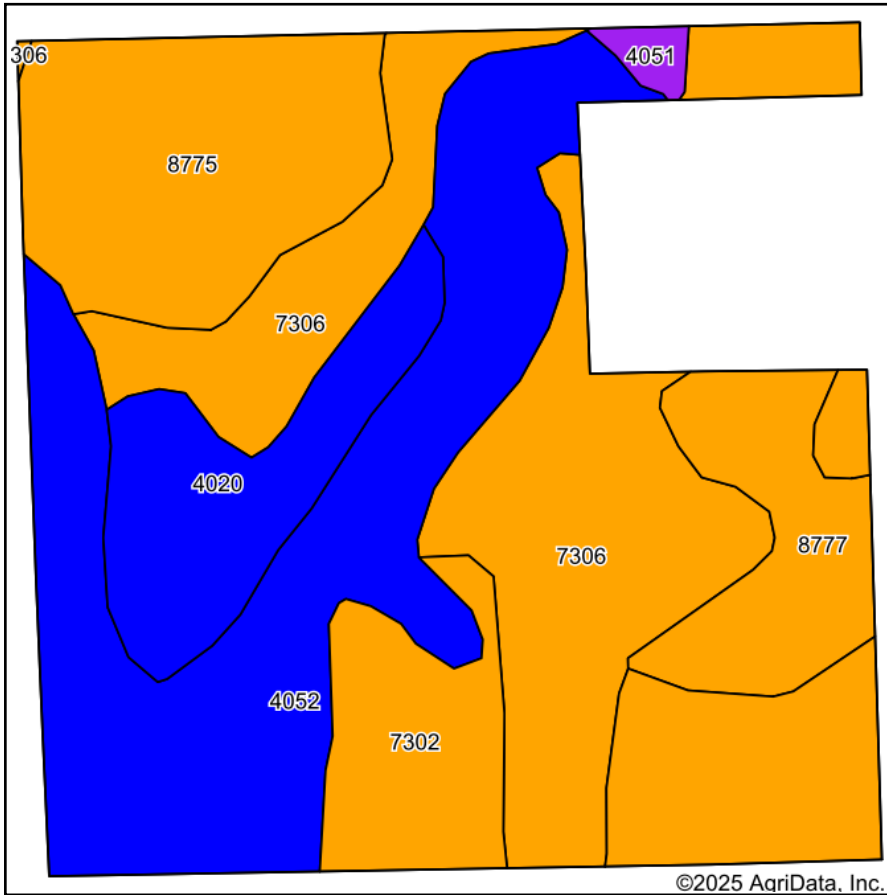
Maps Provided By:



© AgriData, Inc. 2023 www.AgriDataInc.com

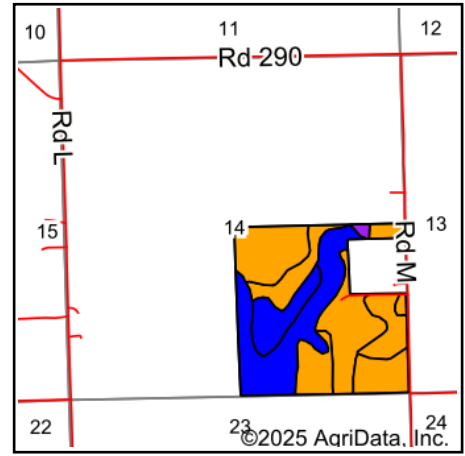
Field borders provided by Farm Service Agency as of 5/21/2008.

Soils Map



Soils data provided by USDA and NRCS.

©2025 AgriData, Inc.



State: **Kansas**
 County: **Lyon**
 Location: **14-17S-11E**
 Township: **Fremont**
 Acres: **143.12**
 Date:



Maps Provided By:



© AgriData, Inc. 2023

www.AgriDataInc.com



Area Symbol: KS111, Soil Area Version: 23

Code	Soil Description	Acres	Percent of field	Non-Irr Class Legend	Non-Irr Class *c	Irr Class *c	*n NCCPI Soybeans
4052	Ivan silt loam, occasionally flooded	38.89	27.3%		IIw	IIw	81
7306	Martin silty clay, 3 to 7 percent slopes, eroded	36.27	25.3%		IIIe	IIIe	42
8775	Kenoma silt loam, 1 to 3 percent slopes	32.83	22.9%		IIIe		59
4020	Chase silty clay loam, occasionally flooded	12.99	9.1%		IIw	IIw	66
8777	Kenoma silty clay loam, 1 to 3 percent slopes, eroded	10.89	7.6%		IIIe		49
7302	Martin silty clay loam, 3 to 7 percent slopes	10.20	7.1%		IIIe	IIIe	49
4051	Ivan silt loam, channeled	1.05	0.7%		Vw		51
Weighted Average					2.65	*-	*n 59.8

*n: The aggregation method is "Weighted Average using all components"

*c: Using Capabilities Class Dominant Condition Aggregation Method

*- Irr Class weighted average cannot be calculated on the current soils data due to missing data.