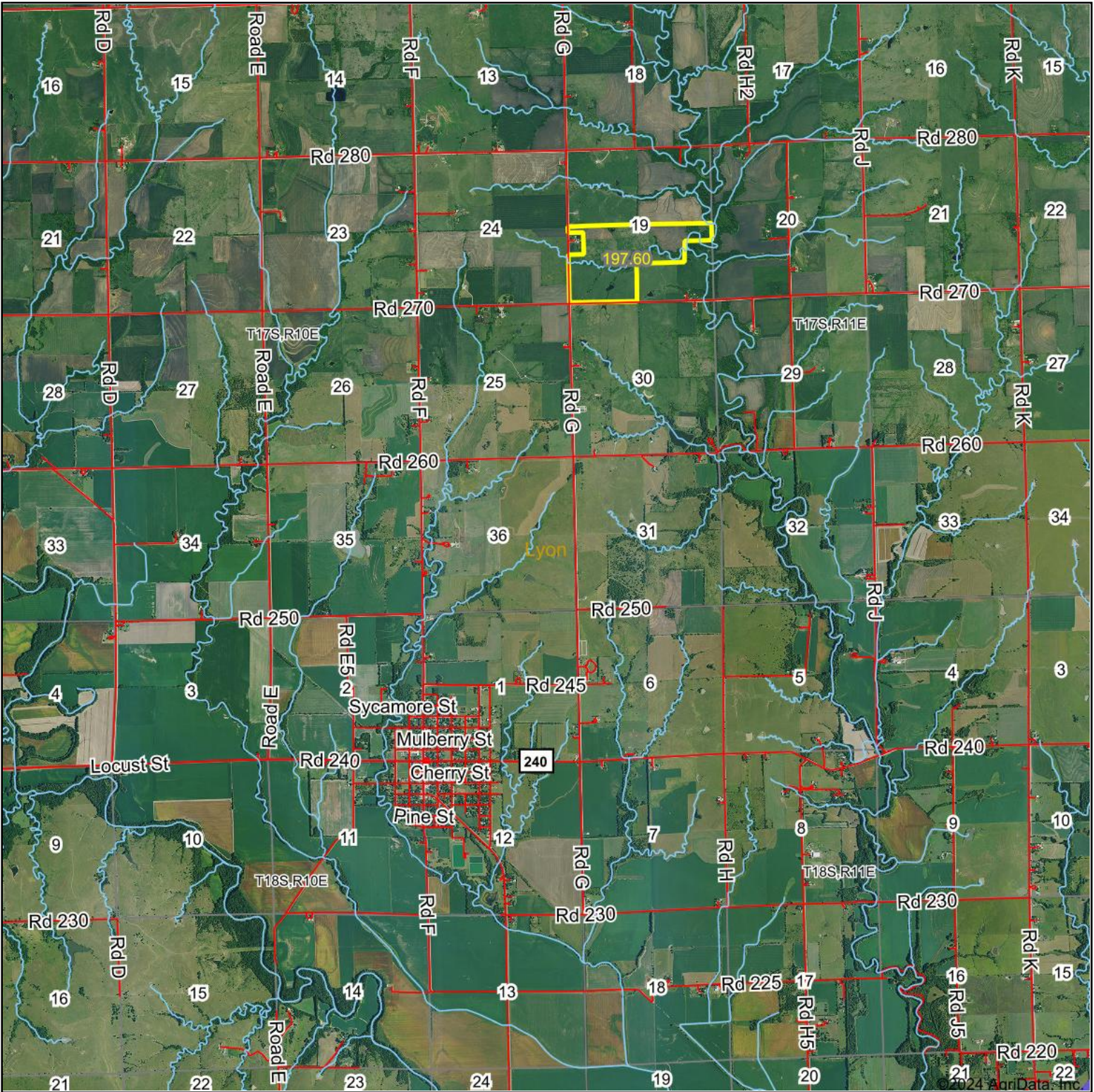


Aerial Map



Boundary Center: 38° 33' 12.96, -96° 14' 2.86

0ft 5379ft 10757ft



19-17S-11E
Lyon County
Kansas



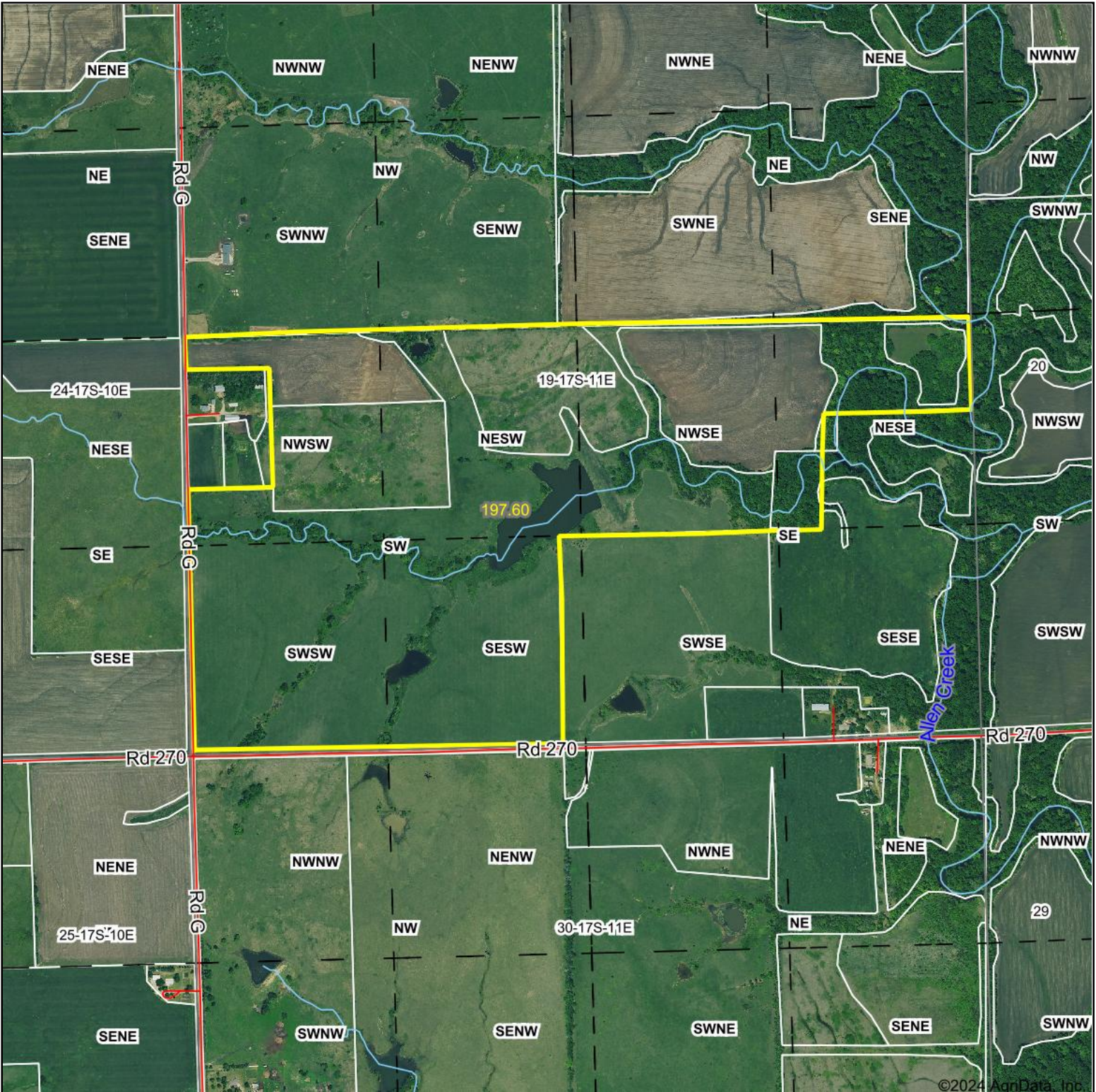
Maps Provided By:



© AgriData, Inc. 2023 www.AgriDataInc.com

Field borders provided by Farm Service Agency as of 5/21/2008.

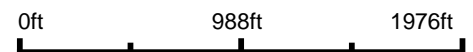
Aerial Map



©2024 AgriData, Inc.



Boundary Center: 38° 33' 12.96, -96° 14' 2.86



19-17S-11E
Lyon County
Kansas



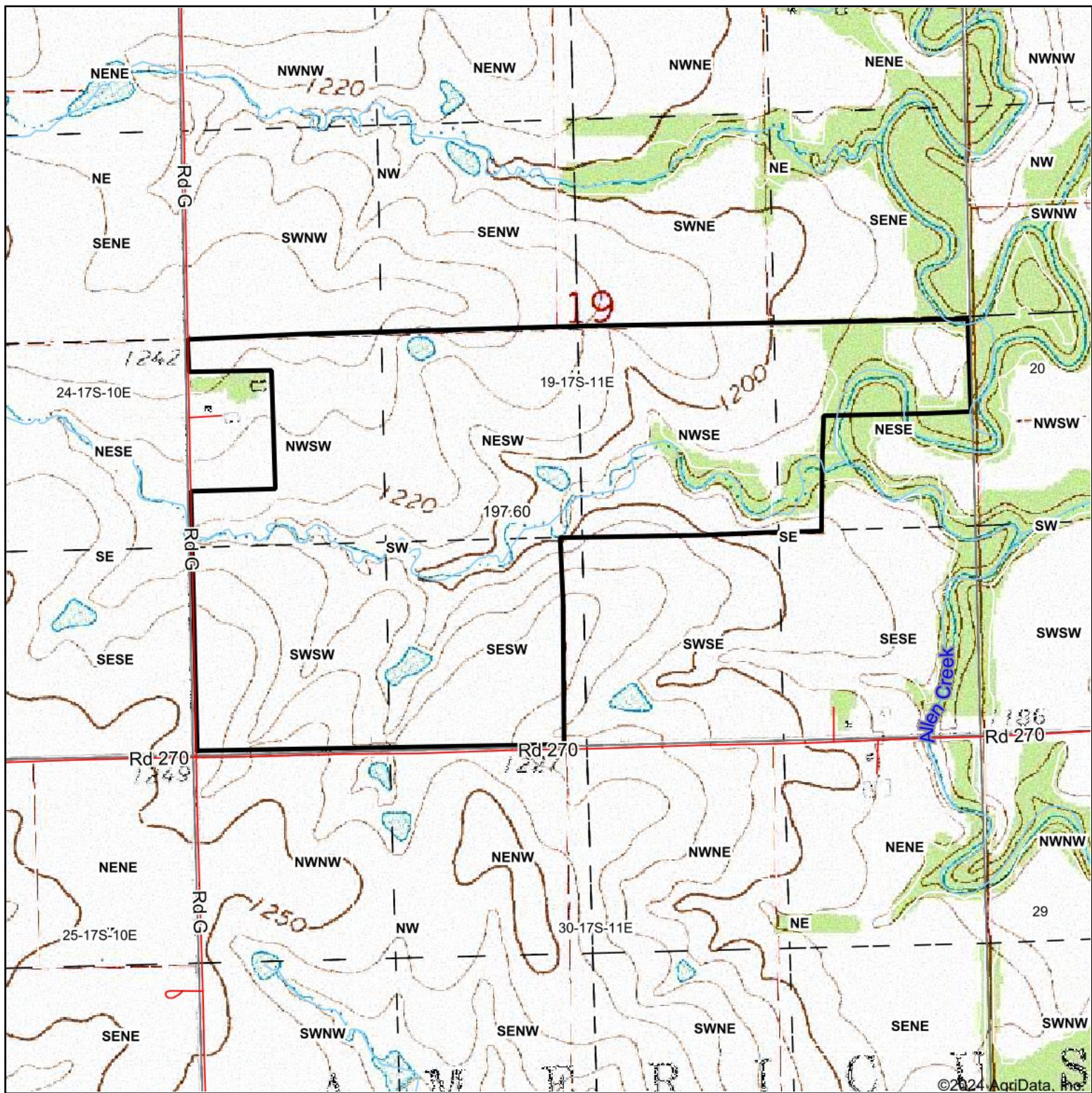
Maps Provided By:



© AgriData, Inc. 2023 www.AgriDataInc.com

Field borders provided by Farm Service Agency as of 5/21/2008.

Topography Map



©2024 AgriData, Inc.



Map Center: 38° 33' 12.12, -96° 14' 5.66

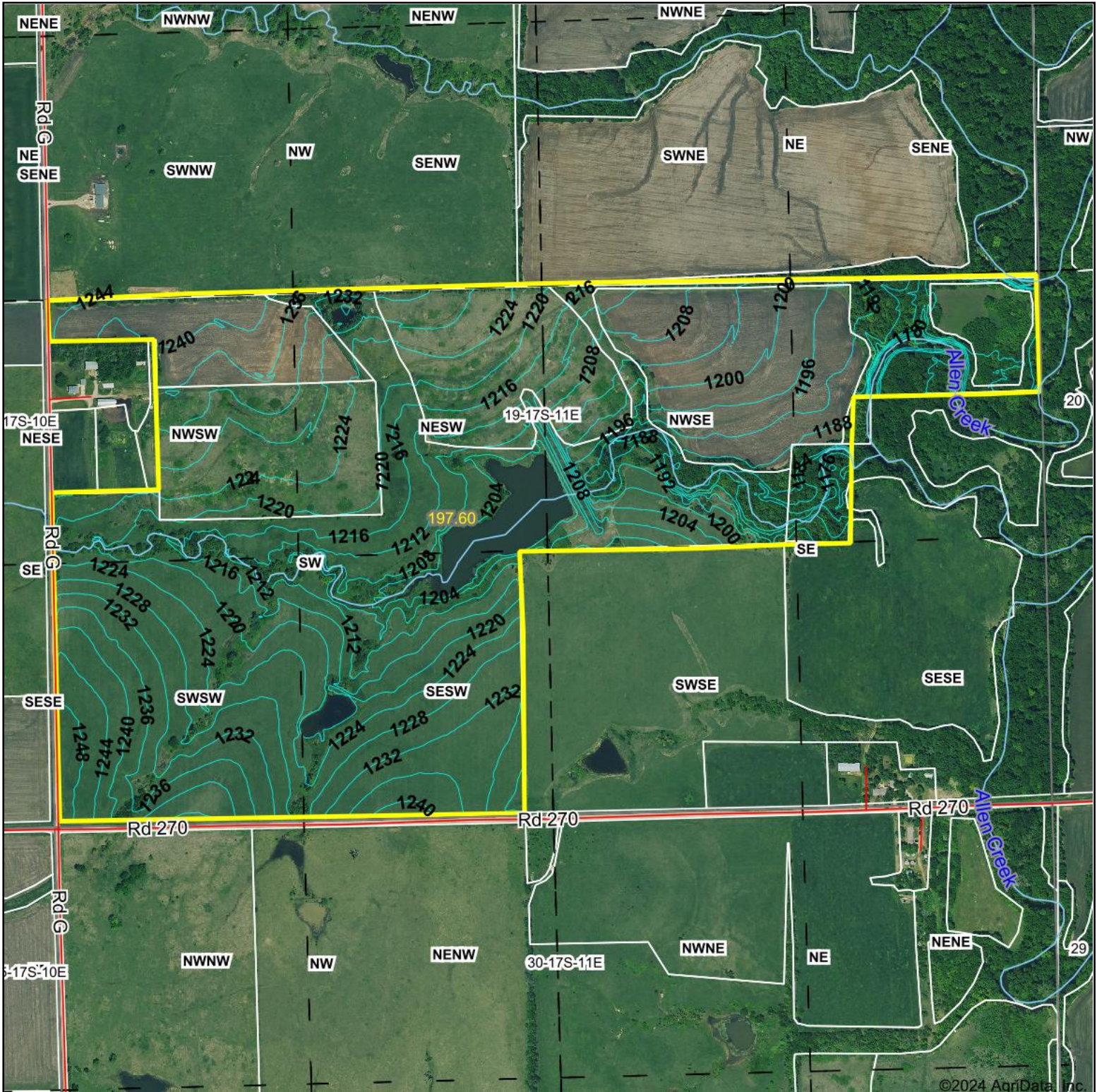


19-17S-11E
Lyon County
Kansas



Maps Provided By:
 **surety**
CUSTOMIZED ONLINE MAPPING
© AgriData, Inc. 2023 www.AgriDataInc.com

Topography Contours



© AgriData, Inc. 2023 www.AgrIDataInc.com
Field borders provided by Farm Service Agency as of 5/21/2008.

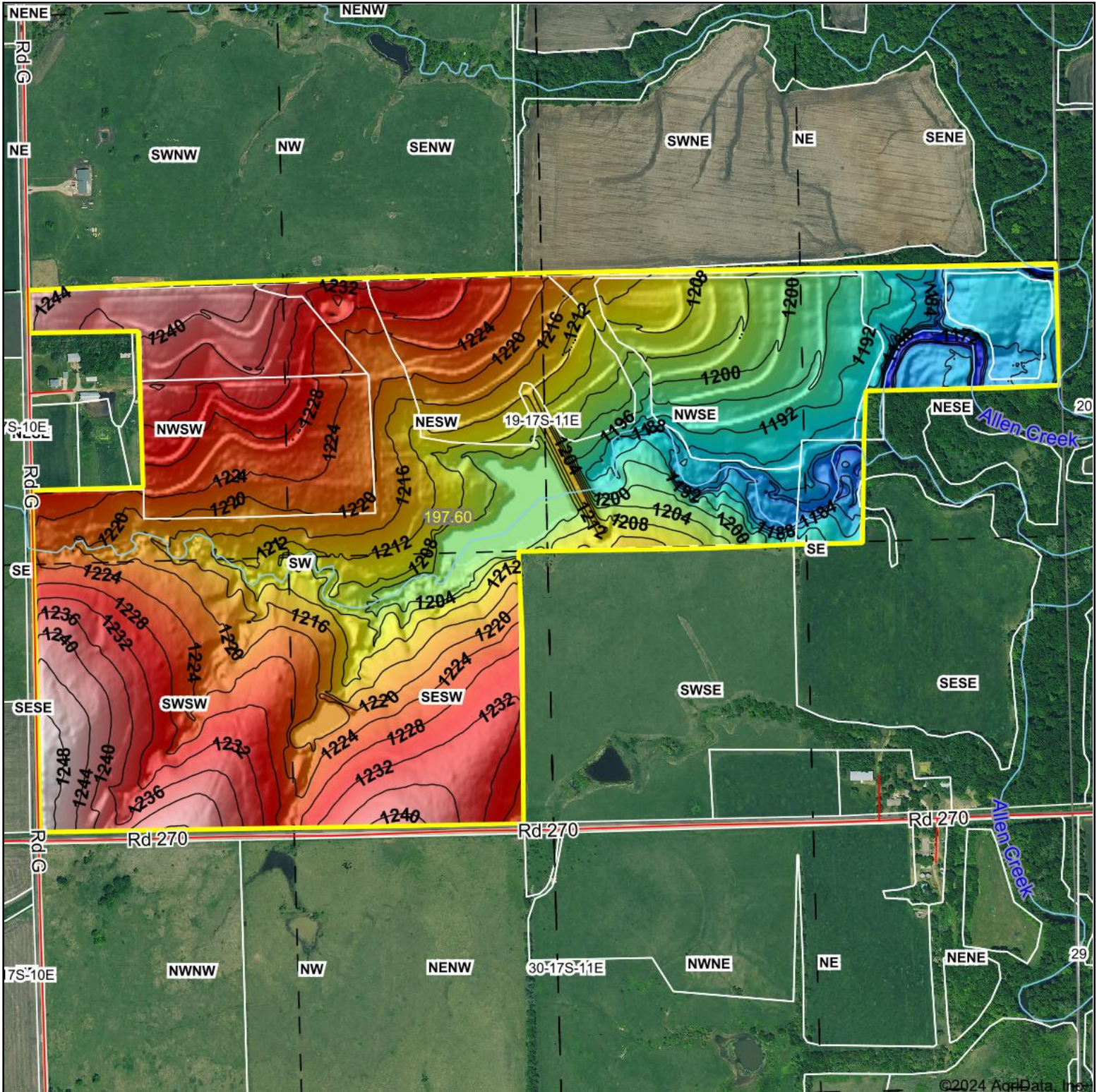
Source: USGS 3 meter dem
Interval(ft): 4.0
Min: 1,169.1
Max: 1,249.9
Range: 80.8
Average: 1,215.5
Standard Deviation: 17.29 ft



19-17S-11E
Lyon County
Kansas

Boundary Center: 38° 33' 12.96, -96° 14' 2.86

Topography Hillshade



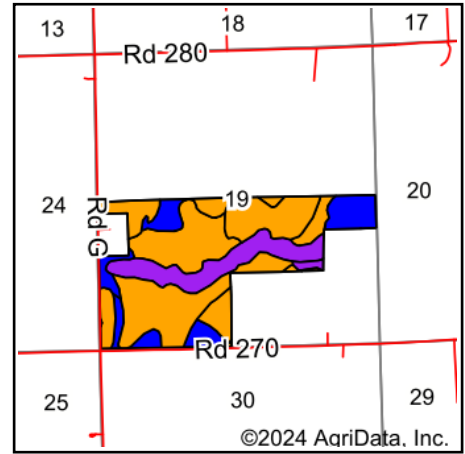
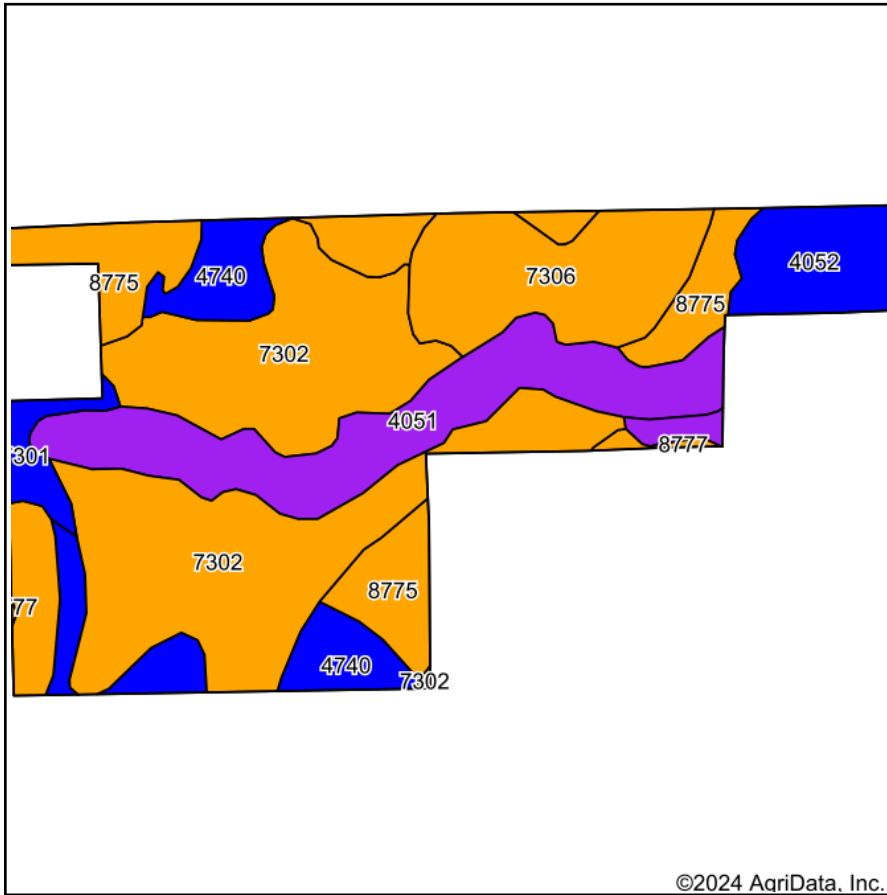
<p>Low Elevation High</p>	<p>Source: USGS 3 meter dem Interval(ft): 4 Min: 1,169.1 Max: 1,249.9 Range: 80.8 Average: 1,215.5 Standard Deviation: 17.29 ft</p>	<p>0ft 753ft 1505ft</p> <p>©2024 AgriData, Inc.</p> <p>19-17S-11E Lyon County Kansas</p> <p>Boundary Center: 38° 33' 12.96, -96° 14' 2.86</p>
---------------------------	---	--



© AgriData, Inc. 2023 www.AgriDataInc.com

Field borders provided by Farm Service Agency as of 5/21/2008.

Soils Map



State: **Kansas**
 County: **Lyon**
 Location: **19-17S-11E**
 Township: **Americus**
 Acres: **197.6**
 Date:



Soils data provided by USDA and NRCS.

Area Symbol: KS111, Soil Area Version: 23

Code	Soil Description	Acres	Percent of field	Non-Irr Class Legend	Non-Irr Class *c	Irr Class *c	*n NCCPI Soybeans
7302	Martin silty clay loam, 3 to 7 percent slopes	72.82	36.8%		Ille	Ille	49
8775	Kenoma silt loam, 1 to 3 percent slopes	33.43	16.9%		Ille		59
4051	Ivan silt loam, channeled	32.01	16.2%		Vw		51
7306	Martin silty clay, 3 to 7 percent slopes, eroded	23.69	12.0%		Ille	Ille	42
4740	Labette silty clay loam, 1 to 3 percent slopes	17.79	9.0%		Ile	Ile	43
4052	Ivan silt loam, occasionally flooded	11.59	5.9%		Ilw	Ilw	81
7301	Martin silty clay loam, 1 to 3 percent slopes	4.22	2.1%		Ile	Ile	49
4590	Clime-Sogn complex, 3 to 20 percent slopes	1.74	0.9%		Vle		33
8777	Kenoma silty clay loam, 1 to 3 percent slopes, eroded	0.31	0.2%		Ille		49
Weighted Average					3.18	*-	*n 51.4

*n: The aggregation method is "Weighted Average using all components"

*c: Using Capabilities Class Dominant Condition Aggregation Method

*- Irr Class weighted average cannot be calculated on the current soils data due to missing data.

Soils data provided by USDA and NRCS.