

# LIVE AUCTION



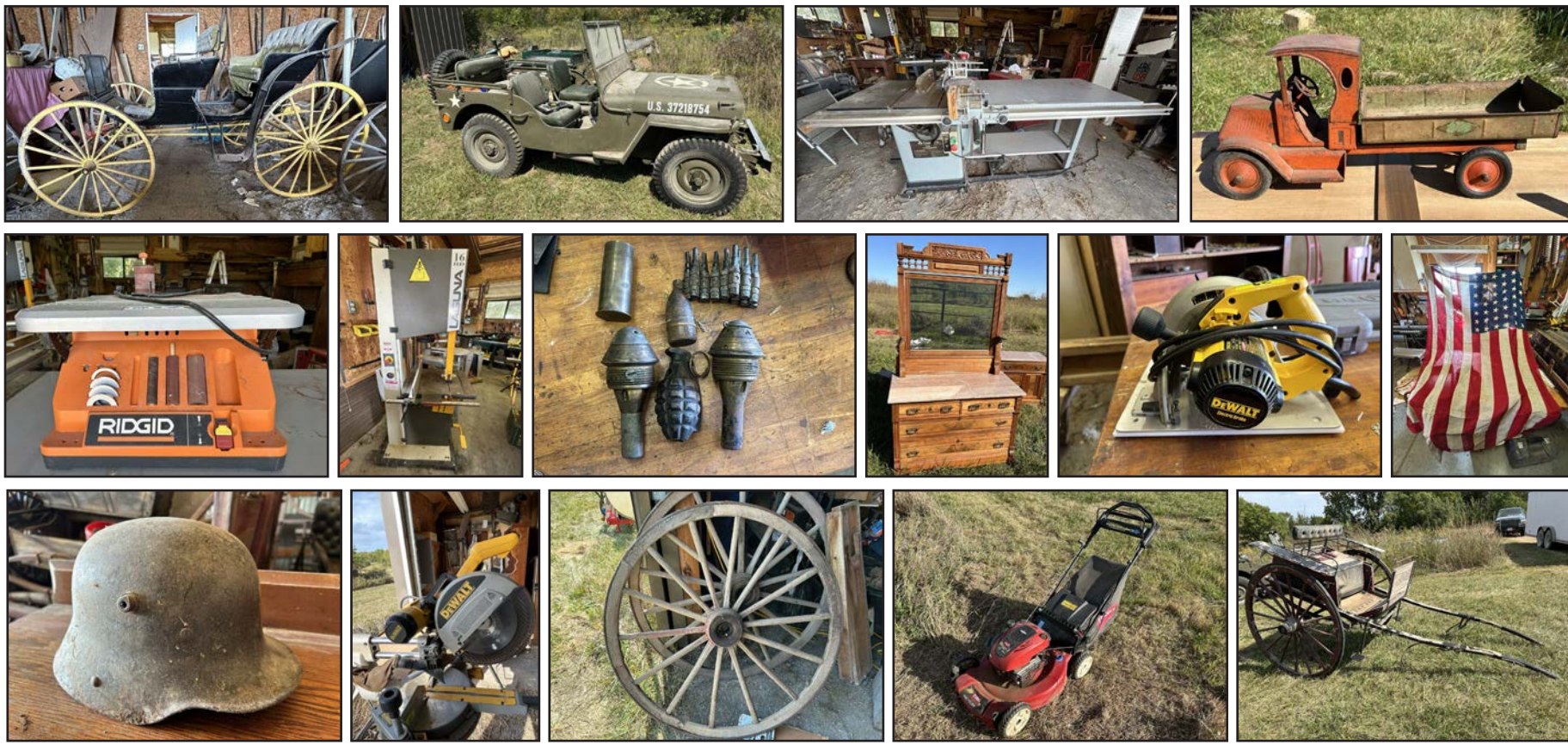
# AUCTION



10:00 AM • SATURDAY, OCTOBER 26, 2024

SELLER: *The John G. Atherton Rev Trust*

AUCTION LOCATION: 2827 Road M, Emporia, Kansas 66801



**AUCTIONEER'S NOTE:** Here is an auction you won't want to miss. It is loaded with all kinds of unique collectibles and great woodworking tools. As you will see, John had a great eye for antiques and really enjoyed collecting buggies and spare parts. This is one of the largest collections of buggies and parts we have ever had. There is also some very collectible military memorabilia, including an original 1942 Jeep, some great collectible toys and much more. Plus, he had a full shop of woodworking tools. The Jeep and the buggies will sell at 1pm. We look forward to seeing you at the auction!

**DIRECTIONS:** From Emporia, go north on HWY-99 for 5.8 mi to the S-curve, go straight north onto Rd L for 3.0 mi to Rd 270, turn east and go 1.0 mi to Rd M, then north for 1.3 mi to the auction site on west side of the road. Watch for signs!

**JEEP (will sell at 1pm):** 1942 Ford GPW Army Jeep, manual, 1/4 ton, 4x4, #53312, shows 41,449-mi, equipped w/ Shovel, Axe, and all the Accessories, Period Correct (SEE WEBSITE FOR DETAILS TO BID ONLINE FOR THE JEEP)

**BUGGIES & PARTS (Buggies will sell at 1pm):** 4 Seater Horse Drawn Surrey; Buggy Top Covers; 2 Wheel Hunting Buggy w/ Dog Box; Schuttler Buggy Seat; Horse Drawn Open Sleigh; 4 Wheeled Buggy w/ Bed x3; Restored Buggy Lanterns x5 Brass; Wooden Buggy Wheels x24; 4 Wheel Wagon Parts (Footboard, Carriage Shafts, Hubs, Axles, Leaf Springs x50, Irons, Stiffeners, Single Trees x50, Steel Buggy Steps x200+, Buggy Shafts x16; Buggy Seat x13); Dietz Buggy Lantern; 4 Wheel, 4 Seater Buggy x2; 2 Wheel Buggy x5; Large Draft Horse Buggy Wheel x2; Canopy Frames x6; Sleigh Bells;

**ANTIQUES:** Copper Horse Weather Vane; Victorian Eastlake Marble Top Dressers; Beckwith Cottage Organ; Macey Stacking Bookcase Single; Oak Dresser; Cushman Hutch; Brass Candlesticks; 2.5L Copper Pitcher; Brass Lantern; Hawthorne Cooler; Skeleton Keys; Large Walnut Hutch; Oak Fireplace Mantle; Brass Heater; Rotary International Signs; Victorian Hutch; Wooden Ox Yoke; Antique Tool Displays & Hand Planes; Crock Butter Churn; Hunting Dog Weather Vane; Diamond Corn Sheller; Cast Bell; Coleman Cooler; Coleman 282F Lantern; Tom's Roasted Peanuts Jar; Brass Torches; Elgin Pocket Watch; Bavaria Favorite Dishes; Silver Plated Pieces; Large Noritake China Set Gold & Green; Ethan Allen Dresser & Bed;

**ANTIQUA TOYS:** American Giant Wind-Up Truck Large; Buddy L Model A, Texaco Tanker; Sunshine Biscuits Truck; No 27 Drum Major Tin Wind Up; Kingsbury Wind Up Lincoln Zephyr; Hubley Dozer; Cor-Cor Train Engine & Pullman Car; Tootsie Toy Cars/Trucks x19; Cast Iron Tractors; G-Man Toy Gun; Barclay Manoil Lead Soldiers x37; 1930-40s Schwinn Bicycle;

**MILITARY:** 48 Star Flag; Large Bullet Heads; Practice Grenade; Trench Art (Ash Tray, & More); Military Buckles; Medals; Pins (USR, US, Flying Cadet, Rifles x10, Buttons, Stars, Bayonets, Auto Rifle & More); World War 1 M17 Helmet; Maps; 37-85 Ammo Round; Footlocker; Clothes (Coronet Trench Coat, Army Trousers, Dress Coat, Winter Coat, Michele Lamy Coat, M-1943 Field Jacket, Zepel Botany 500 Trench Coat, Officers Shirts & Coats); WWII Helmet; 3 Dress Swords, Leavenworth KS; Large Casket Flag; US Army Flag Kit; Ludwig Bugle; Howitzer Casing; US Spurs x2;

**TOOLS:** Ridgid Orbit Table Sander; DeWalt (Sliding Compound Miter Saw w/ Stand; Plate Jointer, Grinder, Circular Saw); Porter Cable Pancake Air Compressor; Delta Unisaw 10" Table Saw 220v; Laguna 16 HD Band Saw (Heavy Duty); Hawk Scroll Saw; Milwaukee Router & Table; CMT Router Bits; Geetech 8" Planer/Jointer; Large RBI USA Planer 220v; Skil 4HP Grinder; Stihl (028 Super Chainsaw, MS290, SH 85 Gas Blower); Fimco 3pt 150 Gal Sprayer; Better Built Clamp on Bucket Pallet Forks; Dust Collection System; Jet Air Filtration System; Hand Planes x5; Forstner Bits; Shop Smith Band Saw/ Lathe/ Sander; Quick Grip Clamps x6; Bessey Clamps x6; Sockets; Delta Wet Dry Grinder; Misc Wood Walnut, Oak, Pine & More; Hitachi 3 1/4 HP Router; Porter Cable 6931 Router; Bosch 1606 Router; Porter Cable Air Nailer & Stapler; Bosch Palm Sander; Bosch 3725 Sander; Kreg Pocket Hole Set; Bar Clamps x15; Toro Push Mower Self Propelled;

**SADDLES & MISC:** NOS (Bridles, Line Rings, Hame sTugs, Two Sided Snaps, Pad Terrets, Brass Heart Buckles, Safety Hooks, Conway Loops, Tons of Terrets, Buckle Shields); Saddles (12" McClellen; Hereford 16"; Wyeth 14 1/2"; Kids 12"; Western 17"); Bridles x15; Stirrups; Much More Not Listed

**EQUIPMENT & SCRAP:** Heckendorn Mower w/ Newer Vanguard 9-hp Motor 36"; New Auger; Truck Bed Trailer; Tractor Seats x5; Hay Ring x2; Steel Panel; Running Gear; John Deere Manure Spreader; 2 Row Planter; John Deere Grain Drill; Model H Manure Spreader; Ford F150 XLT Lariat (Parts); IH Sickle Mower; Kubota Motor Parts; Garden Gate x3; Steel Wheels x10; Coal Forge Table; Horse Trailer; Much More Scrap, Bring a Trailer;

**TERMS:** Cash, approved check, or credit card with 4% processing fee on all credit card transactions. All statements made day of auction take precedence over advertisements. Owners and auction company not responsible for accidents or theft. Nothing removed until settlement has been made. Concessions will be available. Additional terms online.

**CHUCK MAGGARD**  
Sales/Auctioneer  
Cell: 620-794-8824

**ANDY PHIPPS**  
Auctioneer  
Cell: 620-794-1673



Office:  
305 Broadway,  
Cottonwood Falls, KS 66845  
Phone: 620-273-6421  
Fax: 620-273-6425  
griffinrealestateauction@gmail.com

NAA  
Kansas  
BBB