

LIVE AUCTION



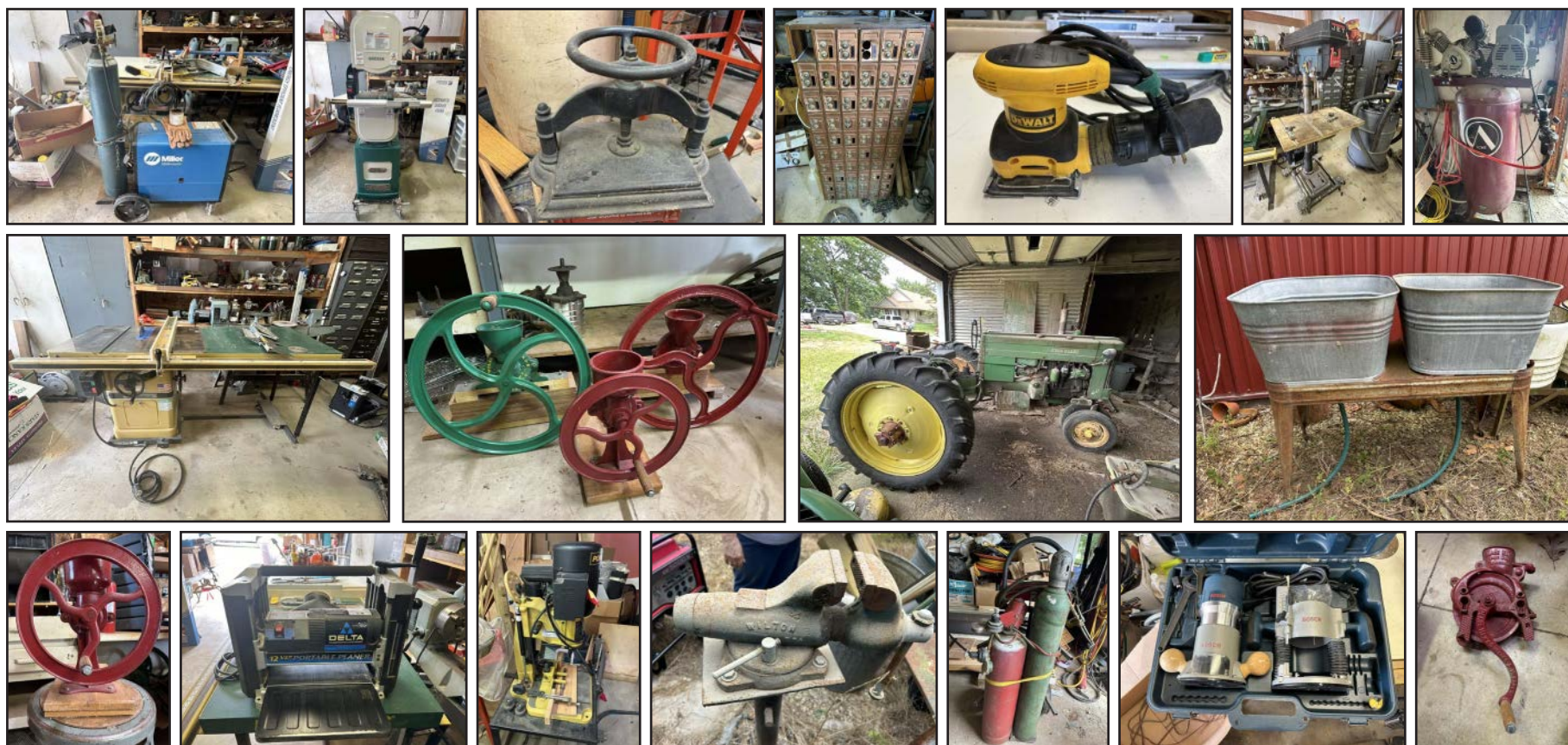
AUCTION



10:00 AM • SATURDAY, SEPTEMBER 21, 2024

Property of Barb Say and the late Mark Say

AUCTION LOCATION: 2055 Road M, Emporia, Kansas 66801



AUCTIONEER'S NOTE: Mark has spent many years giving back to the local 4H clubs and youth in his community. He spent countless hours in his woodshop and loved making projects. He loved all things antique as you will see through some of the items he restored and brought back to life. The Family has decided to sell Mark's collection and tools, don't miss this opportunity to take home some clean woodworking tools that could go into anyone's shop.

DIRECTIONS: From the northeast side of Emporia, KS, go north on Burlingame Rd for 1.5 mi to Road 190, take a slight left turn onto Road M and continue north for 1.5 miles to the auction site on the west side of the road. Watch for signs!

TRACTORS (sell at 1pm): John Deere Model 40, narrow front, org paint, good rear rubber [#69010]; John Deere Model 50, narrow front, org paint, good rear rubber [#5029049]; neither tractor has run in several years, were not running when photographed, might be running by auction time;

ANTIQUES: Antique Hull Mfg Wichita KS Push Mower; Red & Black Corn Grinder; Squirrel Fan; Corn Shellers (Black & Red, Green Arcade No 1, Red, Never Fail, Red Black Hawk); Stanley No 77 Dowel & Rod Turning Machine; Feed Mills (No 0; Green & Yellow No. 0, Wilson Bros); Keystone Grinding Stone; Family Grist Mill Red & Yellow Corn Grinder; "Big Indian" Scythes x2; Corn Mill Wheels x2; Gun Rack; Antique John Deere Wrenches & Hitches; Black & Yellow Fulton Grinder; Blue Eskimo Metal Fan; Sediment Bulbs for Antique Tractor (AC, Clear,); Jeanie Rub Massager; Washboards (Maid-Rite; Dubl-Handl; Victory Glass, The Zinc King, National); Large Pulley Red Belting; 1933 License Plate; Maytag Washer w/ Wringer; Singer Sewing Machine; 5-gal Crock; John Deere Shock Mill, Letz Plow Co; Antique Tractor Manuals; Green & Yellow Windmill; Coleman Lantern; Post Office Mailbox & Doors; Pitch & Silage Forks; Wire Basket x3; Galvanized Washtubs x6 & Water Can x2; Vintage Metal Chairs x3; Galvanized Double Washtub & Stand; Enamel Washing Machine Double Stand (Planter); Rake Teeth;



WOOD WORKING TOOLS: Powermatic Model 66 Table Saw 230v w/ Table ext.; Delta 12 1/2" Portable Planer; Jet Drill Press; Grizzly Extreme Series GO555X Band Saw; Powermatic 701 Benchtop Mortiser w/ Bit Set; JDS Air-Tech 2000 Air Filtration System; Kenmore Built-In Vacuum; Delta (12" Variable Speed Wood Lathe; 10" Miter Saw; 2 Speed 16" Scroll Saw; Table Saw); Bosch (2.25-hp Router & Guide; B7250 Random Sander; Detail Sander); Hegner 22v Scroll Saw w/ Stand; C-Clamps; Bar Clamps; Ryobi (Detail Carver; Detail Sander; R135 Router); Forstner Bit Sets; Craftsman Lathe Tools; CMT 3-pc Router Bit Set; Many Router Bits (Woodline Joinery); DeWalt (Sanding Discs; Palm Sander; HD Reciprocating Saw); Dremel Tools; Porter Cable (Model 330 Palm Sander; Belt Sander 352; Profile Sander; Router Model 7529 & Table); Roto Zip Tools; 7" Disc Sander; Trend 3 EL Trim Router; Timing Light; Dayton HD Drill; B&D (HD Drill, Grinders; Router & Table); Master Gauge Classic Wood Alignment Tool; Rockwell Circular Saw; Misc Grinding/Sanding Discs; Makita 5" Disc Grinder; Freud Dato Blades; Kreg Top Trak 4"; Miter Gauge; Craftsman Air Brad Nailer; Dremel Scroll Saw; Stanley Router; Marples Wood Chisels; Wood Drill Bits; Large Dust System; Dayton Shop Fan; Lots of Misc Lumber & Dowels; Antique Saw; Rockler Jig; Misc Books/Catalogs (Cars, Wood Working, Tools, Guns, Military, Tractors, Implements, Gun Digests, Shooters Bible);

TOOLS: Miller Millermatic 185 Wire Welder w/ Bottle & Cart; SMC Air Compressor; Cutting Torch w/ Cart; Stihl MS250C Chainsaw; Miller Thunderbolt 225 Welder; Ryobi Cutoff Saw; ACME 5-hp 60-gal Air Compressor; Wilton Vise on Stand; Garden Tools; Crow Bars; Drill Press Vise x2; Milwaukee Hammer Drill; 3/8" Close Quarter; Porter Cable Brad Nailer; IR Electric Impact; Grinders (Craftsman, Milwaukee, B&D); Electrical Supplies; SK Socket Set; All Thread; Hobart Welding Hood; Bolt Cutters; Pipe Wrenches x8; 18-gal Shop Vac; Skil 8" Bench Grinder; Sledge Hammer x2; RBG-1201 Lawn Mower Blade Grinder; Drill Bit Set; Misc Bolts, Brass Fittings, & More; O-Ring Set; Kennedy Benchtop Toolbox x2; Mitutoyo (Micrometer x5, Comb Head x2); Starrett Micrometers & Tools; Misc Screws, Bolts, Lock Nuts, Washers, too much list; Parts Organizer Full of Grease Fittings, Cotter Pins & More; Drill Doctor;

OUTDOOR & MISC: Plastic Barrel Train x8 Cars; Echols Ice Shaver; Whirlwind Cotton Candy Machine; T-Posts x50; Woven Wire; 3pt Bushhog; Metal Wheels x7; Live Trap; Post Hole Auger x2; 3pt Quick Attach; Clay Pigeon Shooter; Garden Trailer Pull Type; York Rake 4'; Garden Pull Type Sprayer w/ Booms; Louisville Aluminum Little Giant Type Ladder; 3pt Blade 6'; Pull Type PTO Driven Wood Chipper; Goat Hut; Large Sign; Highway Cones x3; Sign Maker; Realistic Amp; Wood Crafting Supplies; Electric Fence Posts; Outdoor Pot Holders; Feed Trough; Halogen Light; Garden Hose; Misc Ski Rope; Kids Bike x2; Ford 3-pt Blade; 3-pt Post Hole Auger; 3-pt Rotary Mower;

TERMS: Cash, approved check, or credit card with 4% processing fee on all credit card transactions. All statements made day of auction take precedence over advertisements. Owners and auction company not responsible for accidents or theft. Nothing removed until settlement has been made. Concessions will be available.

CHUCK MAGGARD

Sales/Auctioneer
Cell: 620-794-8824

ANDY PHIPPS

Auctioneer
Cell: 620-794-1673

Office:
305 Broadway,
Cottonwood Falls, KS 66845
Phone: 620-273-6421
Fax: 620-273-6425

griffinrealestateauction@gmail.com

