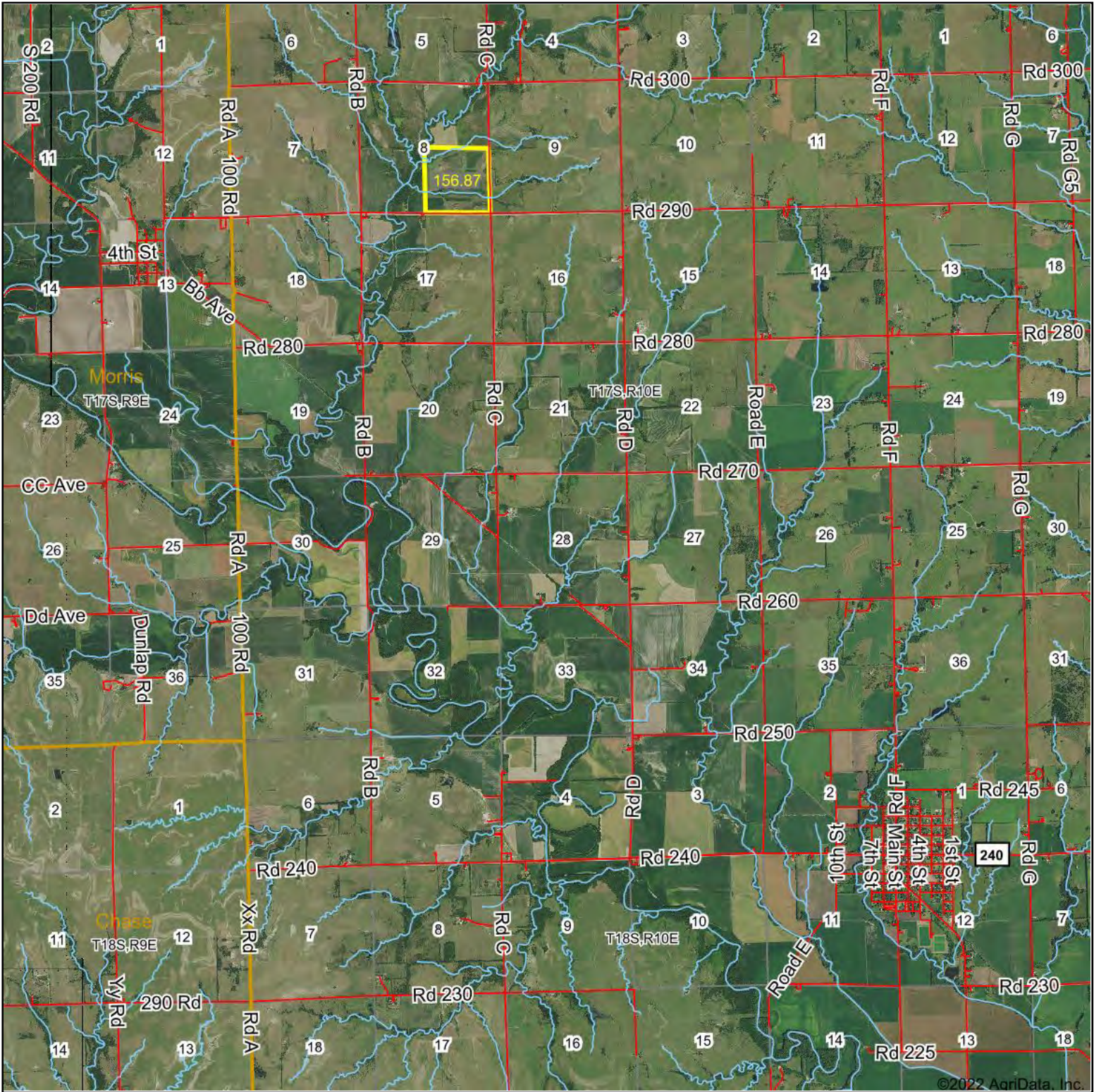


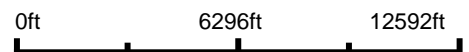
# Aerial Map



©2022 AgriData, Inc.



Map Center: 38° 32' 31.99, -96° 18' 36.54



**28-17S-10E**  
**Lyon County**  
**Kansas**

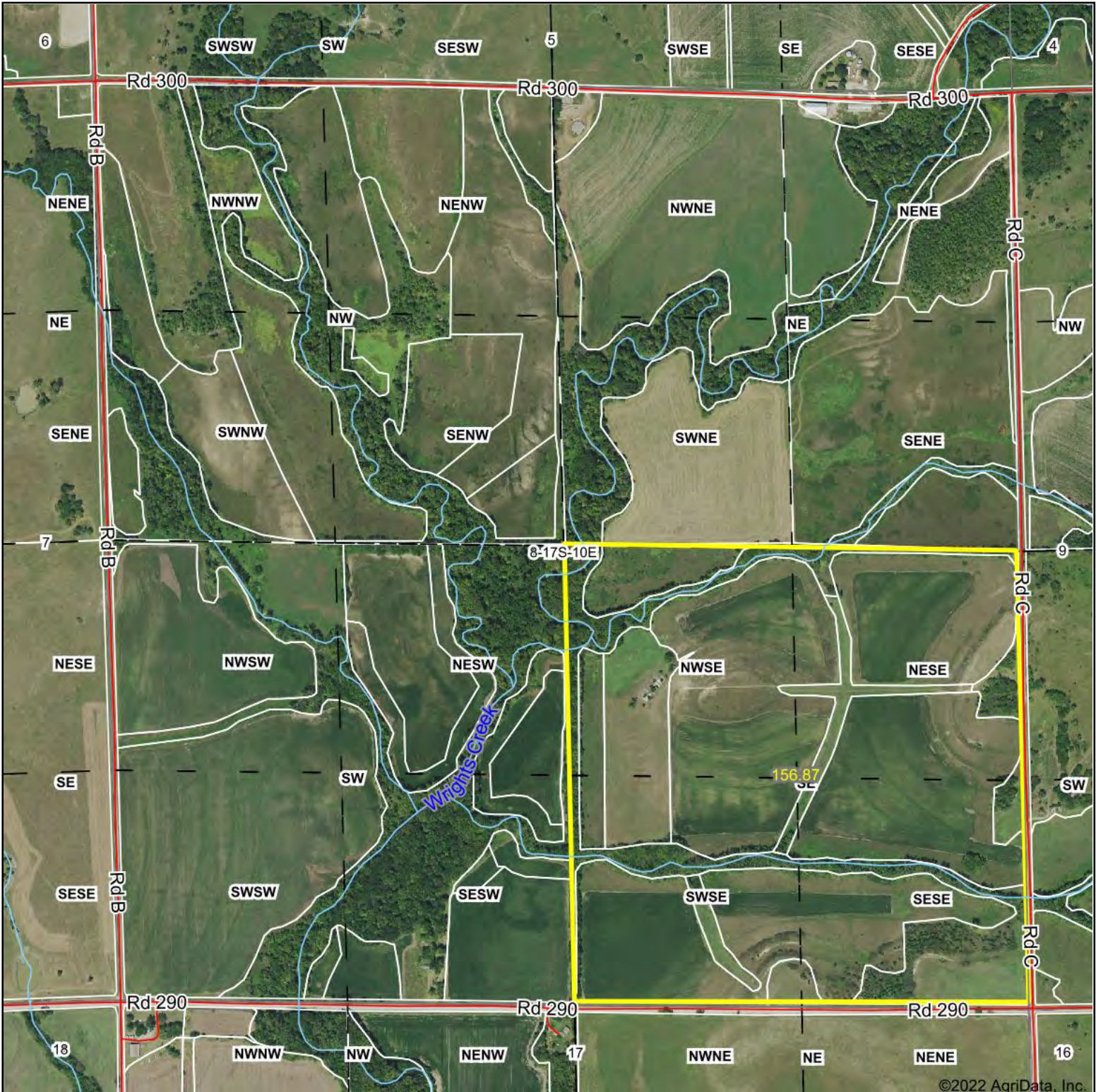


9/26/2022

Maps Provided By:  
 **surety**  
CUSTOMIZED ONLINE MAPPING  
© AgriData, Inc. 2021 www.AgriDataInc.com

Field borders provided by Farm Service Agency as of 5/21/2008.

# Aerial Map



©2022 AgriData, Inc.



Map Center: 38° 35' 13.14, -96° 19' 34.37



**8-17S-10E**  
**Lyon County**  
**Kansas**

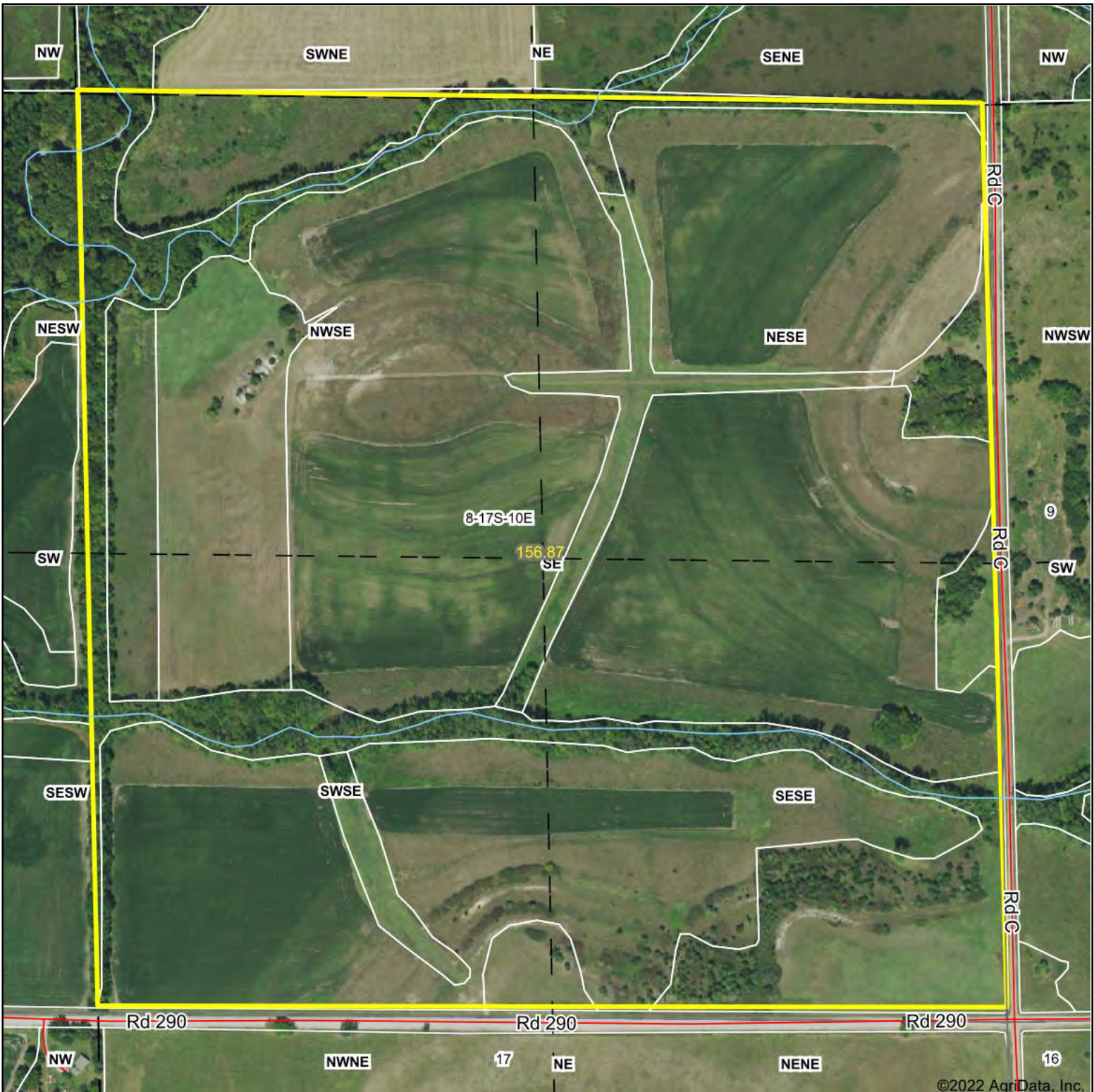


9/26/2022

Maps Provided By:  
 **surety**  
CUSTOMIZED ONLINE MAPPING  
© AgriData, Inc. 2021 www.AgriDataInc.com

Field borders provided by Farm Service Agency as of 5/21/2008.

# Aerial Map



©2022 AgriData, Inc.



Map Center: 38° 34' 59.91, -96° 19' 16.65



**8-17S-10E**  
**Lyon County**  
**Kansas**

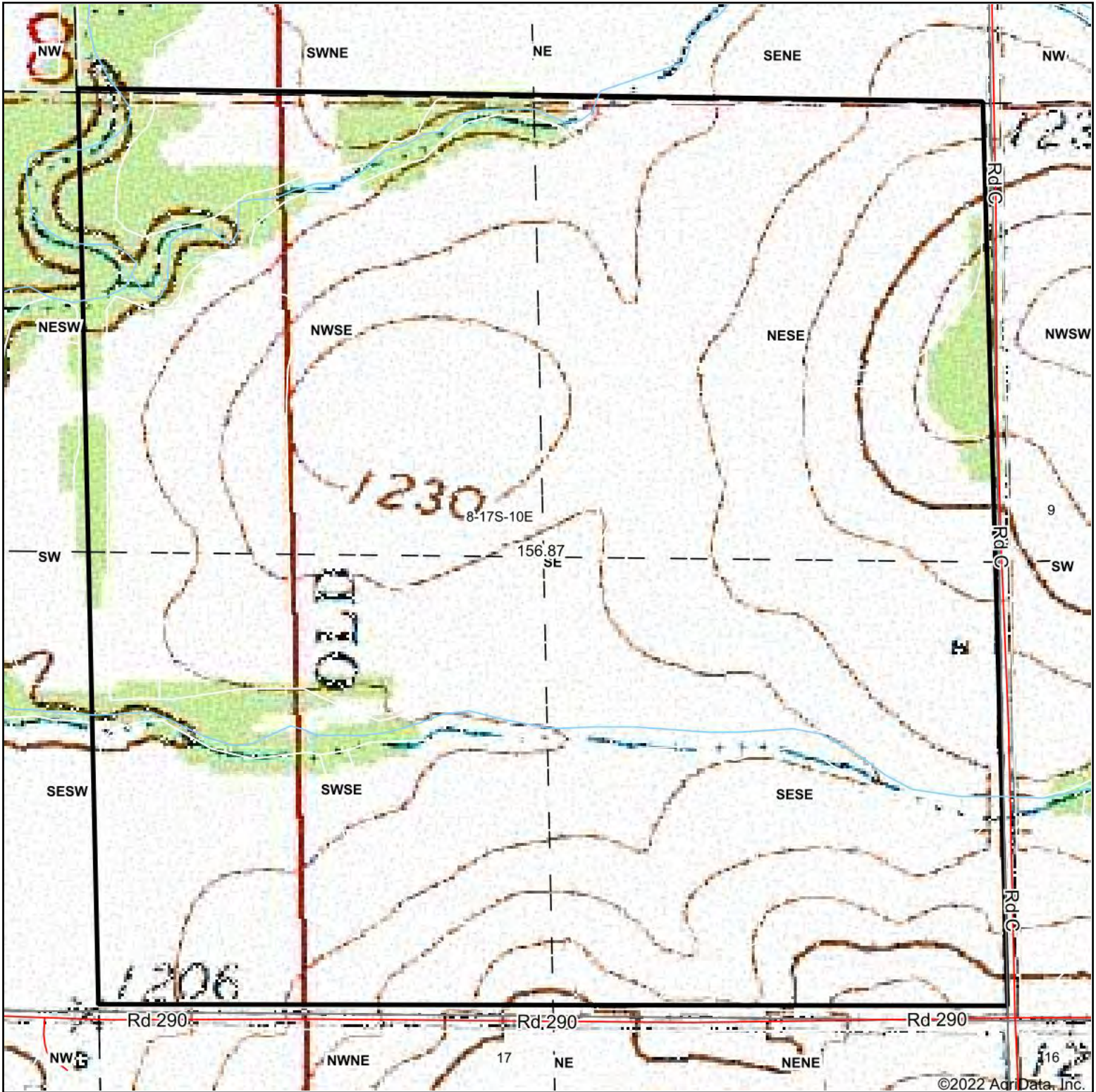


9/26/2022

Maps Provided By:  
 **surety**<sup>®</sup>  
CUSTOMIZED ONLINE MAPPING  
© AgriData, Inc. 2021      www.AgriDataInc.com

Field borders provided by Farm Service Agency as of 5/21/2008.

# Topography Map



©2022 AgriData, Inc.



map center: 38° 34' 59.91, -96° 19' 16.65



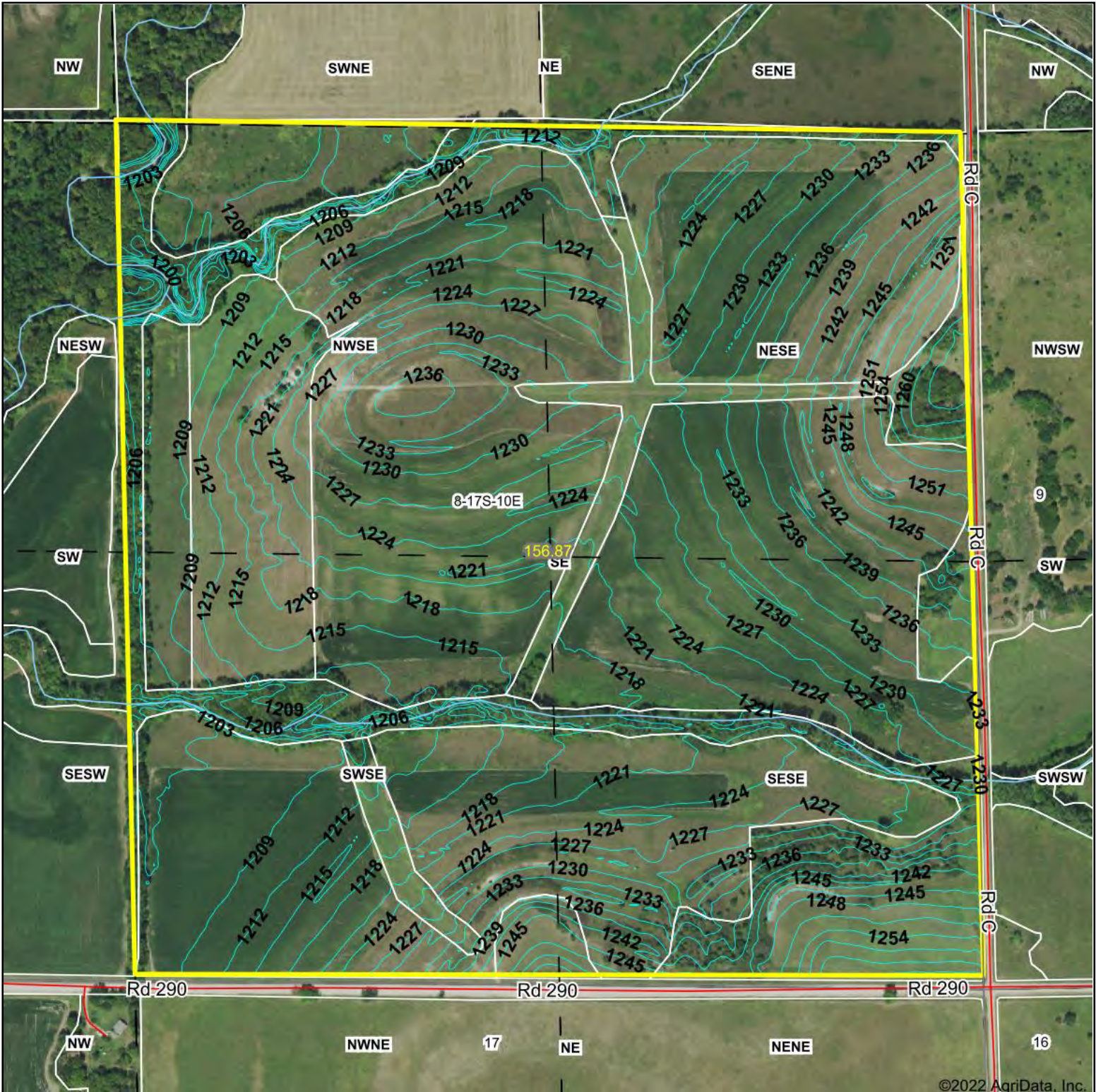
**8-17S-10E**  
**Lyon County**  
**Kansas**



9/26/2022

Maps Provided By:  
  
CUSTOMIZED ONLINE MAPPING  
© AgriData, Inc. 2021      www.AgriDataInc.com

# Topography Contours



©2022 AgriData, Inc.



Maps Provided By:



© AgriData, Inc. 2021

www.AgriDataInc.com

Source: USGS 3 meter dem  
 Interval(ft): 3.0  
 Min: 1,191.8  
 Max: 1,268.6  
 Range: 76.8  
 Average: 1,224.0  
 Standard Deviation: 13.32 ft

0ft 480ft 961ft



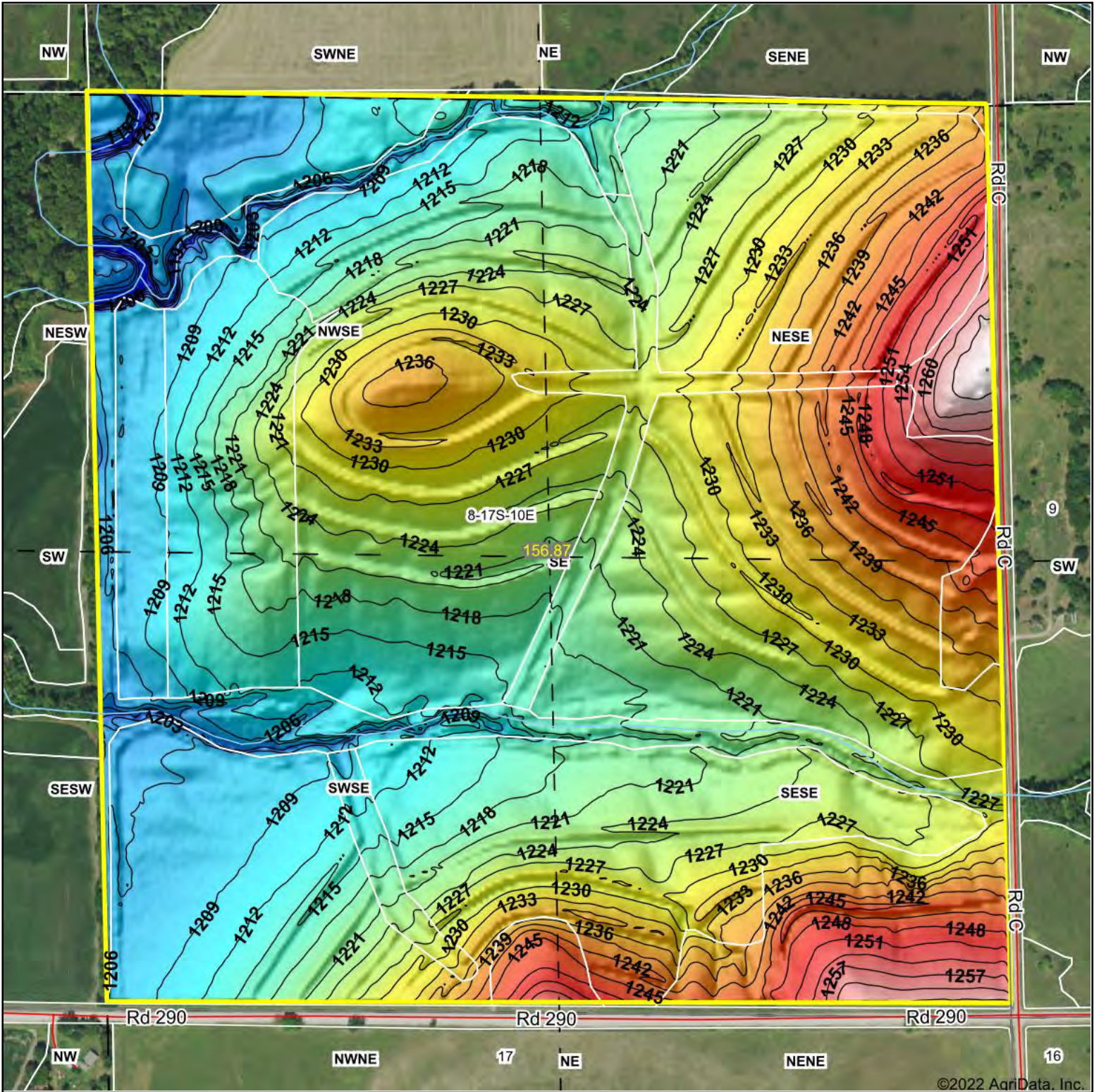
9/26/2022

**8-17S-10E**  
**Lyon County**  
**Kansas**

Map Center: 38° 34' 59.91, -96° 19' 16.65

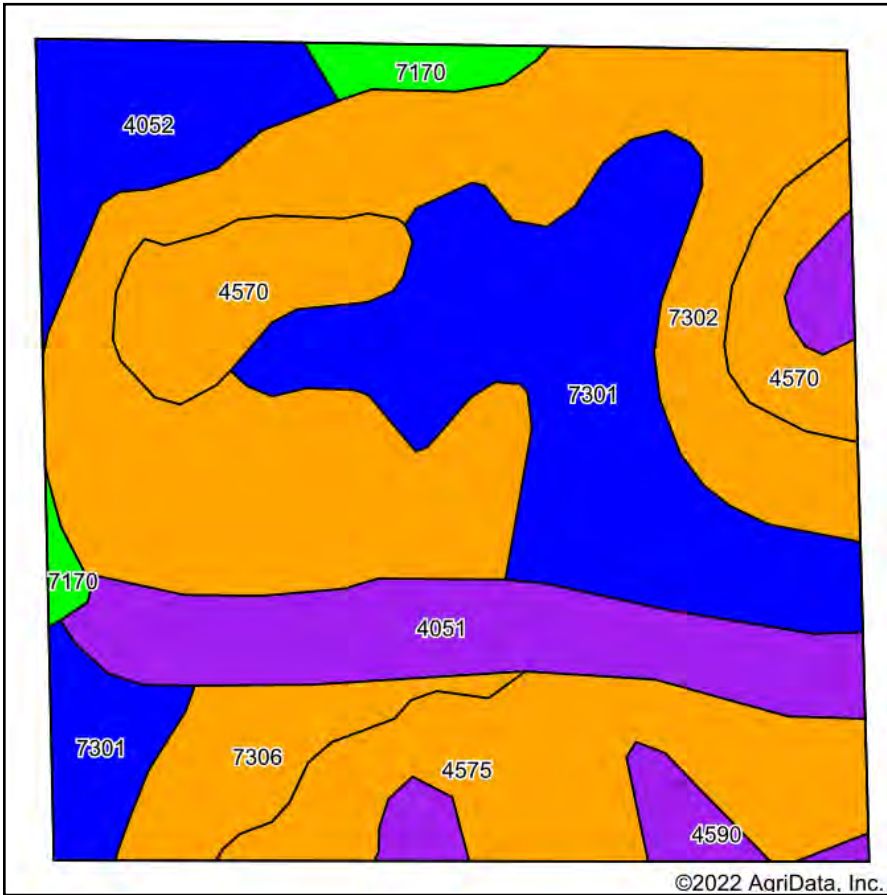
Field borders provided by Farm Service Agency as of 5/21/2008.

# Topography Hillshade

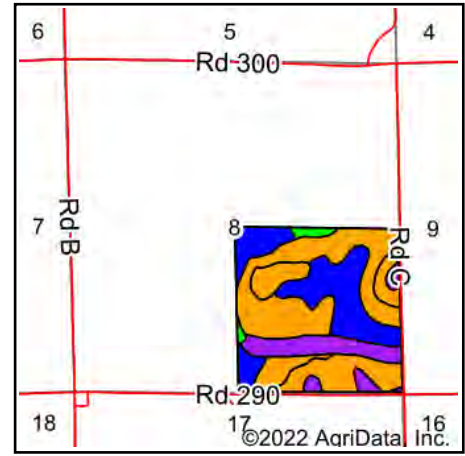


|  |   |                        |
|--|---|------------------------|
| <p>Low Elevation High</p>  | <p>Source: USGS 3 meter dem<br/>             Interval(ft): 3<br/>             Min: 1,191.8<br/>             Max: 1,268.6<br/>             Range: 76.8<br/>             Average: 1,224.0<br/>             Standard Deviation: 13.32 ft</p> | <p>0ft 450ft 900ft</p> |
| <p><b>Griffin</b><br/>Real Estate &amp; Auction</p> <p>Maps Provided By:</p> <p><b>surety</b><br/>CUSTOMIZED ONLINE MAPPING</p> <p>© AgriData, Inc. 2021 www.AgriDataInc.com</p> <p>Field borders provided by Farm Service Agency as of 5/21/2008.</p> | <p>©2022 AgriData, Inc.</p> <p>8-17S-10E<br/>Lyon County<br/>Kansas</p> <p>9/26/2022</p> <p>map center: 38° 34' 59.91, -96° 19' 16.65</p>   |                        |

# Soils Map



Soils data provided by USDA and NRCS.



State: **Kansas**  
 County: **Lyon**  
 Location: **8-17S-10E**  
 Township: **Americus**  
 Acres: **156.87**  
 Date: **9/26/2022**



Area Symbol: KS111, Soil Area Version: 20

| Code                    | Soil Description                                 | Acres | Percent of field | Non-Irr Class Legend | Non-Irr Class *c | Irr Class *c | *n NCCPI Soybeans |
|-------------------------|--|-------|------------------|----------------------|------------------|--------------|-------------------|
| 7302                    | Martin silty clay loam, 3 to 7 percent slopes    | 49.60 | 31.6%            |                      | IIIe             | IIIe         | 49                |
| 7301                    | Martin silty clay loam, 1 to 3 percent slopes    | 33.92 | 21.6%            |                      | Ile              | Ile          | 49                |
| 4575                    | Clime silty clay, 3 to 7 percent slopes, eroded  | 18.43 | 11.7%            |                      | IIIe             | IIIe         | 33                |
| 4051                    | Ivan silt loam, channeled                        | 16.50 | 10.5%            |                      | Vw               |              | 51                |
| 4570                    | Clime silty clay, 3 to 7 percent slopes          | 13.12 | 8.4%             |                      | IIIe             | IIIe         | 42                |
| 4052                    | Ivan silt loam, occasionally flooded             | 9.69  | 6.2%             |                      | IIw              | IIw          | 81                |
| 7306                    | Martin silty clay, 3 to 7 percent slopes, eroded | 7.26  | 4.6%             |                      | IIIe             | IIIe         | 42                |
| 4590                    | Clime-Sogn complex, 3 to 20 percent slopes       | 5.28  | 3.4%             |                      | VIe              |              | 34                |
| 7170                    | Reading silt loam, rarely flooded                | 3.07  | 2.0%             |                      | Iw               | Iw           | 76                |
| <b>Weighted Average</b> |  |       |                  |                      | <b>2.99</b>      | <b>*-</b>    | <b>*n 48.4</b>    |

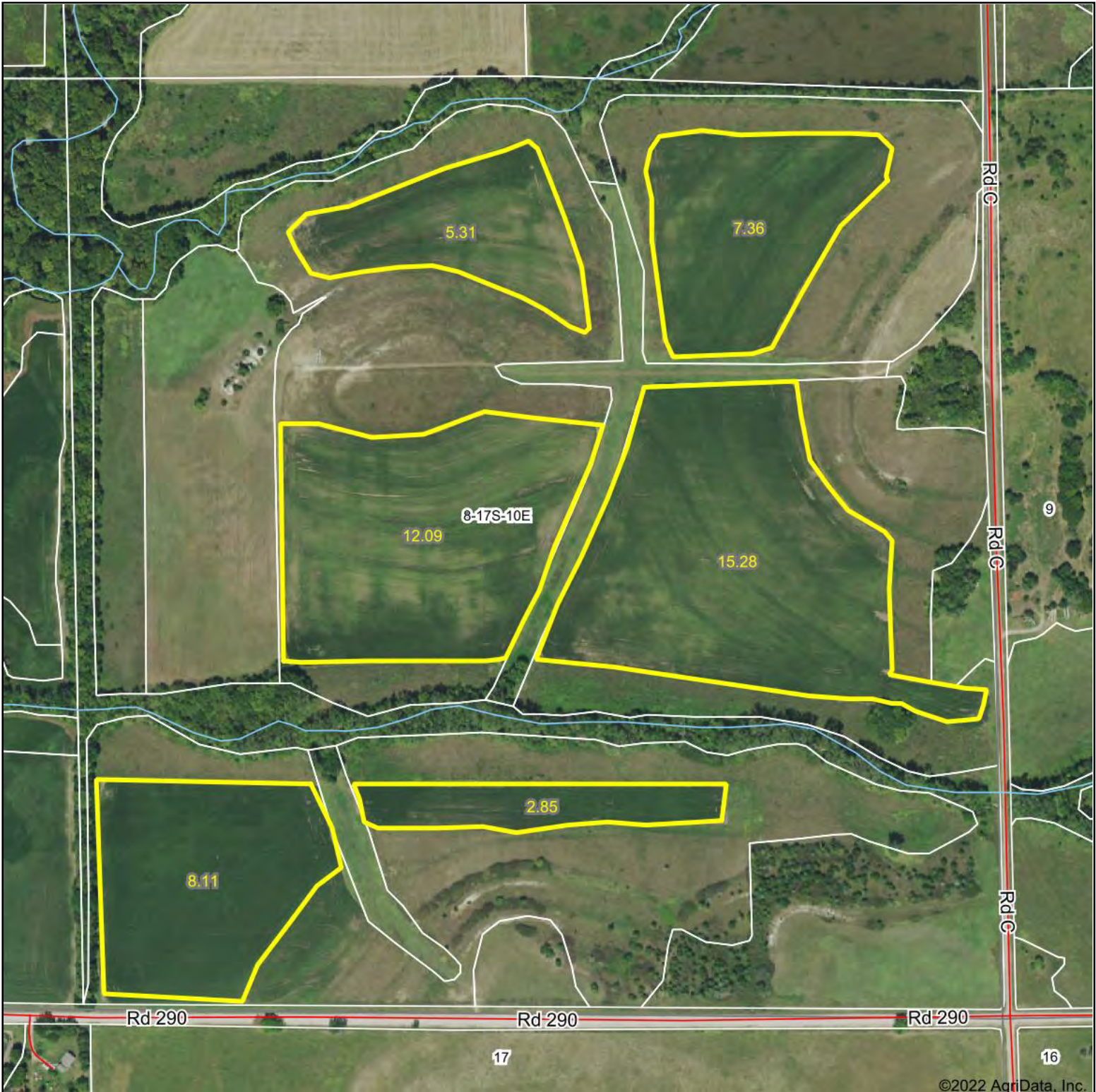
\*n: The aggregation method is "Weighted Average using all components"

\*c: Using Capabilities Class Dominant Condition Aggregation Method

\*- Irr Class weighted average cannot be calculated on the current soils data due to missing data.

Soils data provided by USDA and NRCS.

# Aerial Map



©2022 AgriData, Inc.



Map Center: 38° 34' 59.7, -96° 19' 16.3



**8-17S-10E**  
**Lyon County**  
**Kansas**



9/26/2022

Maps Provided By:  
 **surety**  
CUSTOMIZED ONLINE MAPPING  
© AgriData, Inc. 2021 www.AgriDataInc.com

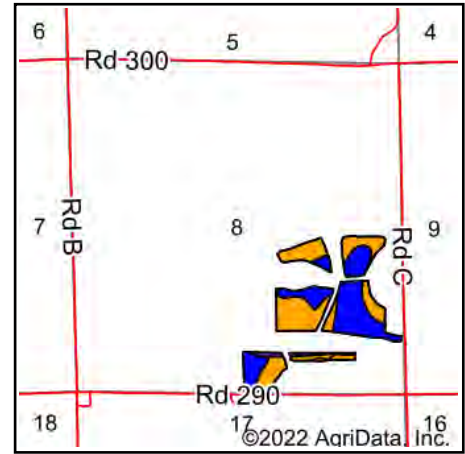
Field borders provided by Farm Service Agency as of 5/21/2008.



# Soils Map



Soils data provided by USDA and NRCS.



State: **Kansas**  
 County: **Lyon**  
 Location: **8-17S-10E**  
 Township: **Americus**  
 Acres: **51**  
 Date: **9/26/2022**



Maps Provided By:



© AgriData, Inc. 2021

www.AgriDataInc.com



Area Symbol: KS111, Soil Area Version: 20

| Code                    | Soil Description                                 | Acres | Percent of field | Non-Irr Class Legend | Non-Irr Class *c | Irr Class *c | *n NCCPI Soybeans |
|-------------------------|--|-------|------------------|----------------------|------------------|--------------|-------------------|
| 7301                    | Martin silty clay loam, 1 to 3 percent slopes    | 23.29 | 45.7%            |                      | Ile              | Ile          | 49                |
| 7302                    | Martin silty clay loam, 3 to 7 percent slopes    | 20.32 | 39.8%            |                      | IIle             | IIle         | 49                |
| 7306                    | Martin silty clay, 3 to 7 percent slopes, eroded | 4.82  | 9.5%             |                      | IIIle            | IIIle        | 42                |
| 4051                    | Ivan silt loam, channeled                        | 1.52  | 3.0%             |                      | Vw               |              | 51                |
| 4575                    | Clime silty clay, 3 to 7 percent slopes, eroded  | 0.97  | 1.9%             |                      | IIle             | IIle         | 33                |
| 4570                    | Clime silty clay, 3 to 7 percent slopes          | 0.08  | 0.2%             |                      | IIle             | IIle         | 42                |
| <b>Weighted Average</b> |  |       |                  |                      | <b>2.60</b>      | <b>*-</b>    | <b>*n 48.1</b>    |

\*n: The aggregation method is "Weighted Average using all components"

\*c: Using Capabilities Class Dominant Condition Aggregation Method

\*- Irr Class weighted average cannot be calculated on the current soils data due to missing data.

Soils data provided by USDA and NRCS.