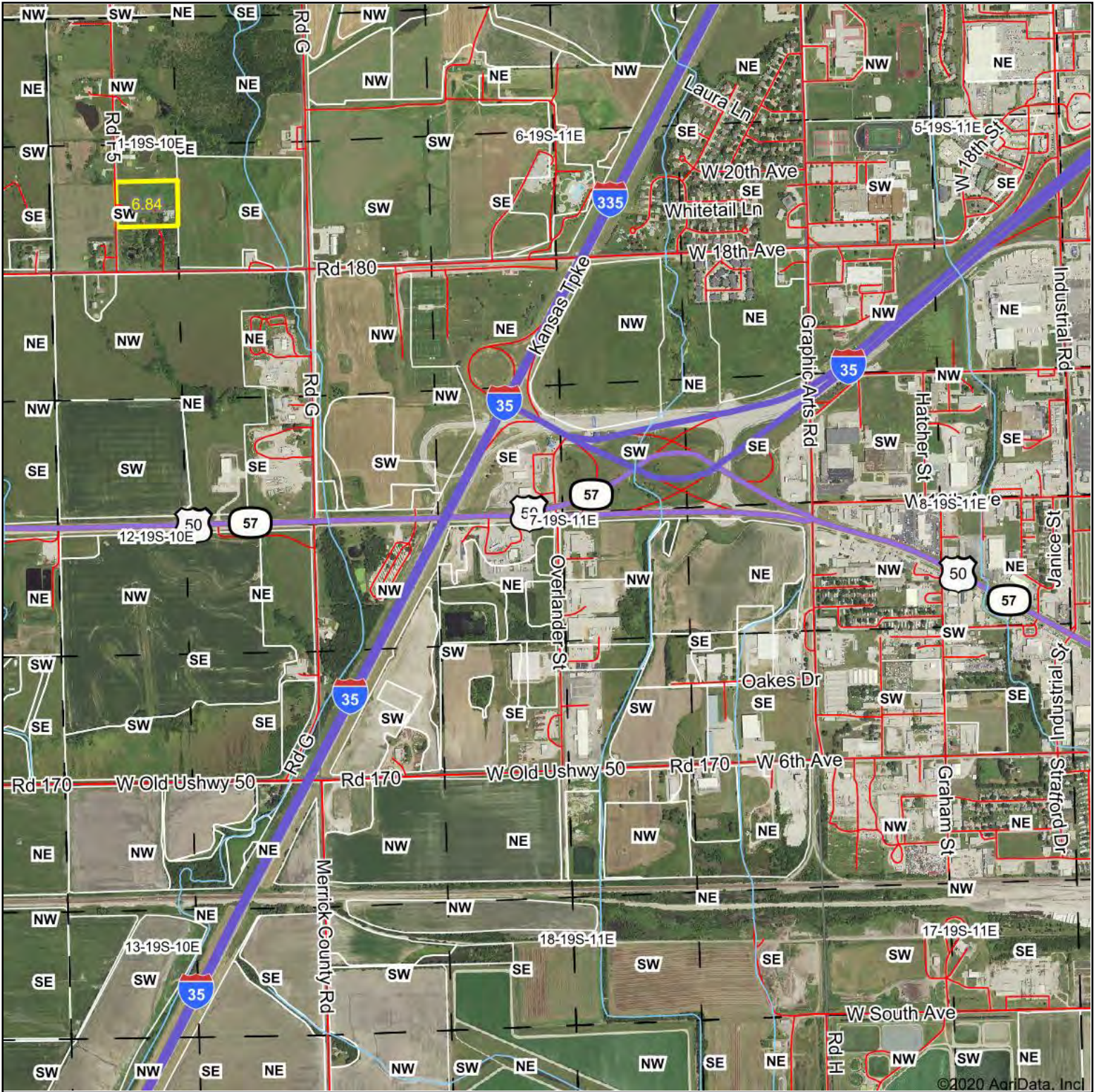


# Aerial Map



Map Center: 38° 24' 40.84, -96° 14' 9.23

0ft 1607ft 3214ft

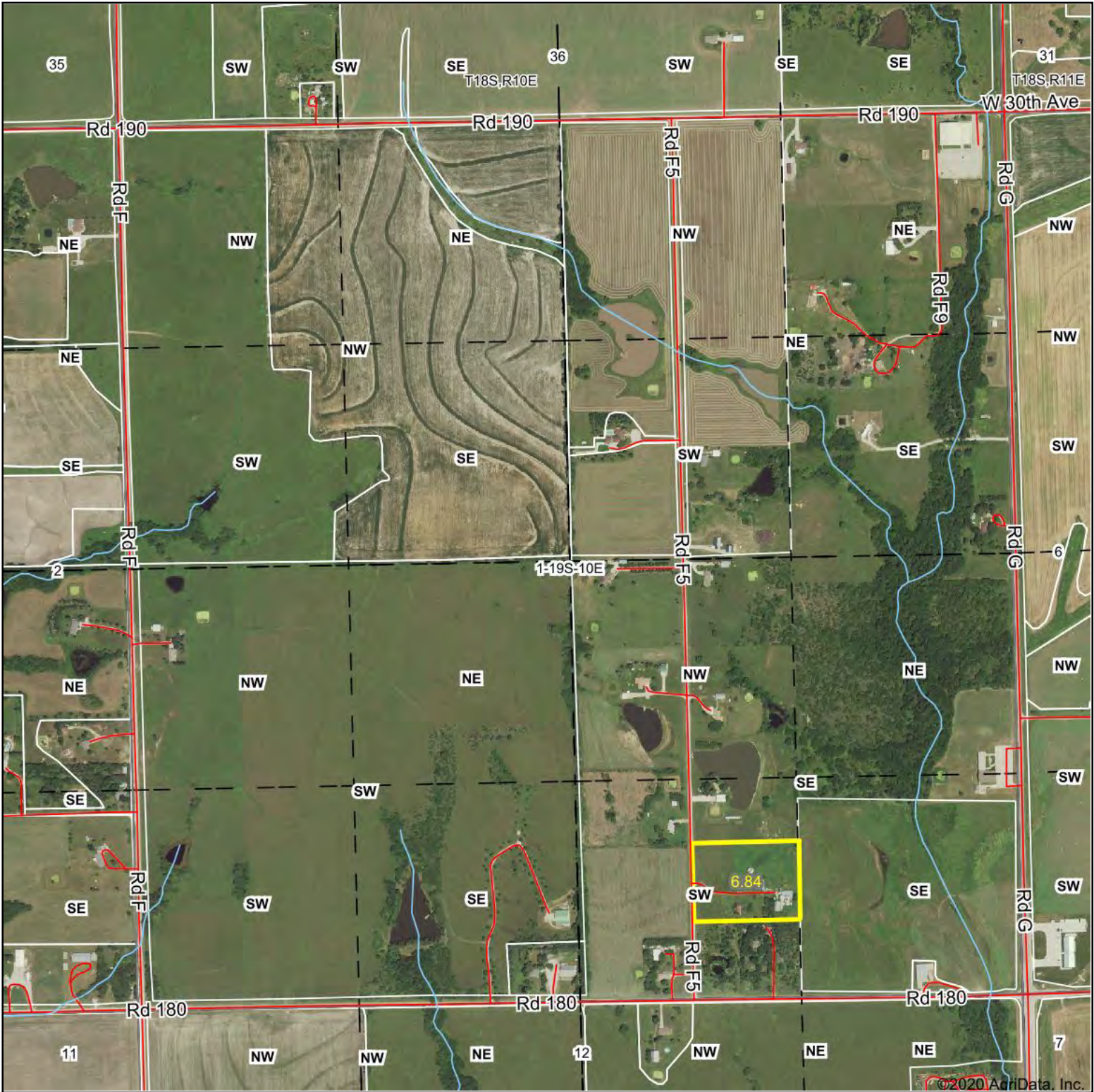
7-19S-11E  
Lyon County  
Kansas



Maps Provided By:  
**surety**  
CUSTOMIZED ONLINE MAPPING  
© AgriData, Inc. 2020 www.AgriDataInc.com

Field borders provided by Farm Service Agency as of 5/21/2008.

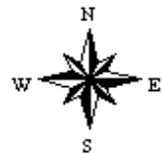
# Aerial Map



Map Center: 38° 25' 37.13, -96° 15' 13.93

0ft 927ft 1854ft

1-19S-10E  
Lyon County  
Kansas



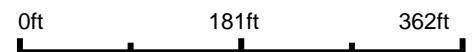
Maps Provided By:  
 **surety**<sup>®</sup>  
CUSTOMIZED ONLINE MAPPING  
© AgriData, Inc. 2020 www.AgriDataInc.com

Field borders provided by Farm Service Agency as of 5/21/2008.

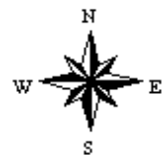
# Aerial Map



Map Center: 38° 25' 16.02, -96° 15' 0.77



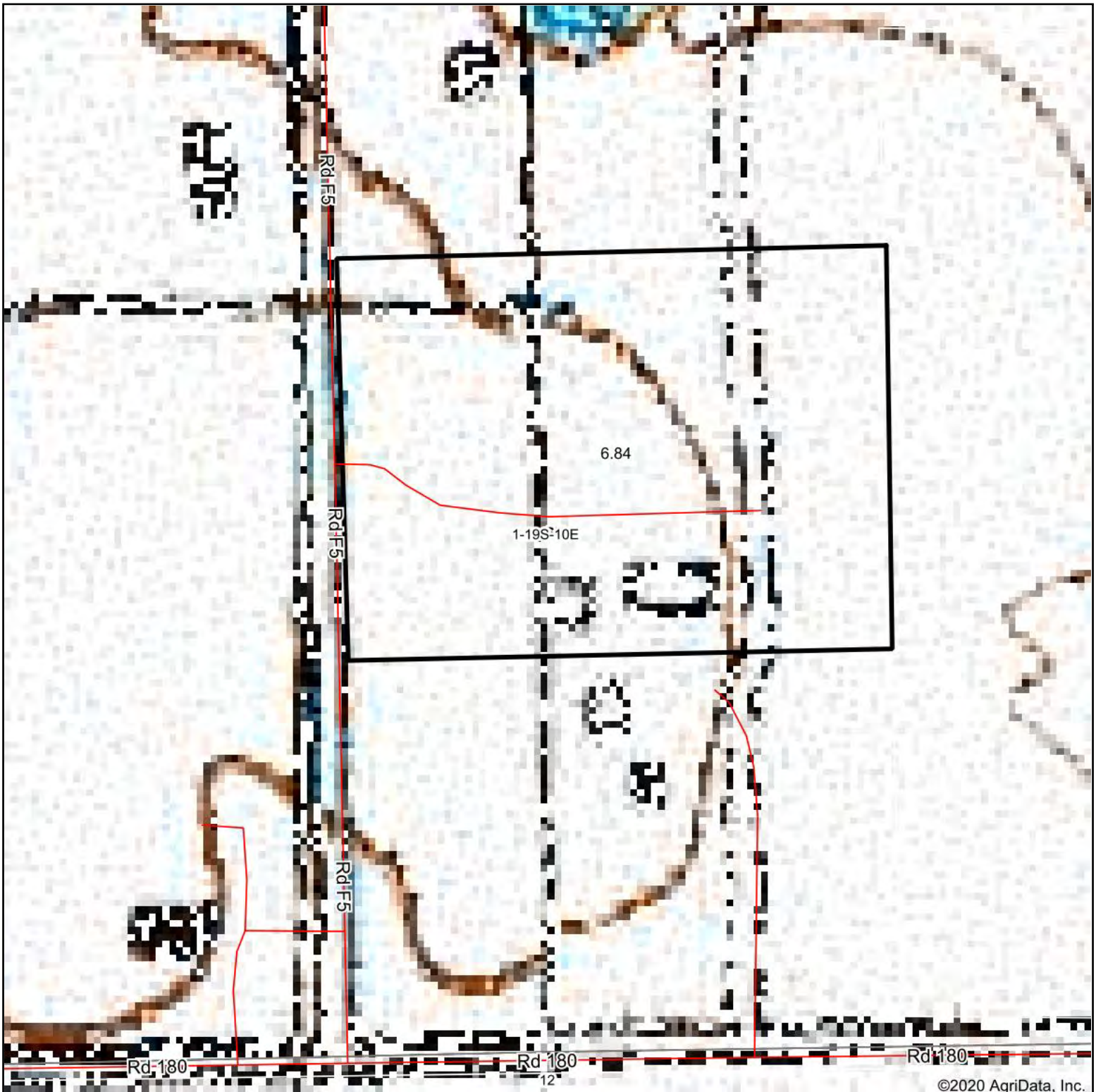
**1-19S-10E**  
**Lyon County**  
**Kansas**



Maps Provided By:  
**surety**<sup>®</sup>  
CUSTOMIZED ONLINE MAPPING  
© AgriData, Inc. 2020      www.AgriDataInc.com

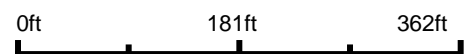
Field borders provided by Farm Service Agency as of 5/21/2008.

# Topography Map

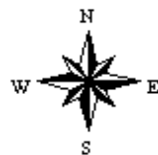


©2020 AgriData, Inc.

map center: 38° 25' 16.02, -96° 15' 0.77



**1-19S-10E**  
**Lyon County**  
**Kansas**



Maps Provided By:  
  
CUSTOMIZED ONLINE MAPPING  
© AgriData, Inc. 2020      www.AgriDataInc.com

# Topography Contours



©2020 AgriData, Inc.

Source: USGS 3 meter dem

Interval(ft): 2.0

Min: 1,165.9

Max: 1,176.0

Range: 10.1

Average: 1,172.3

Standard Deviation: 2.23 ft



**1-19S-10E**  
**Lyon County**  
**Kansas**

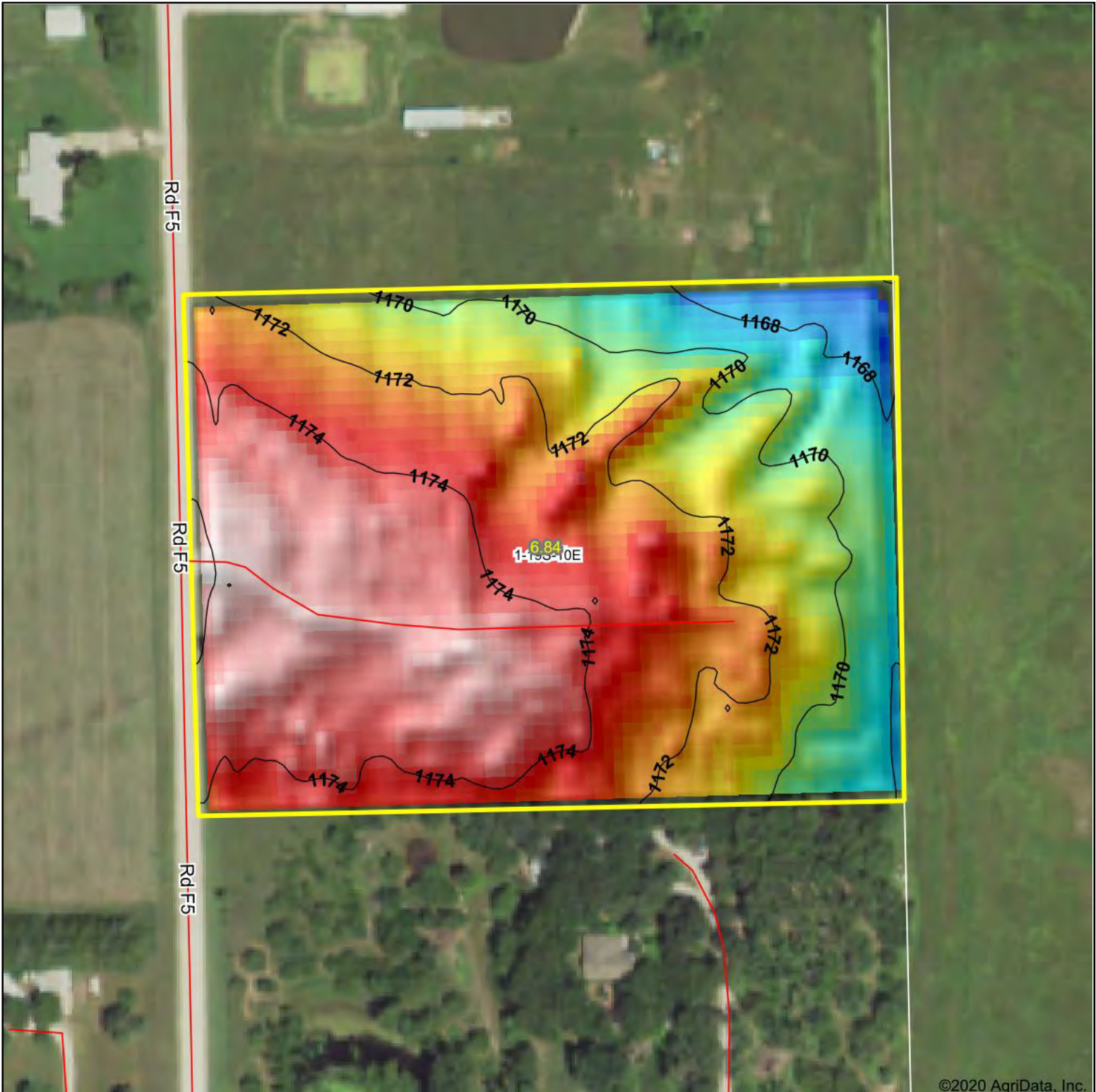
Map Center: 38° 25' 16.02, -96° 15' 0.77

Maps Provided By:

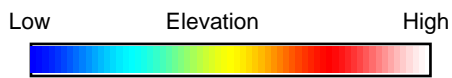


© AgriData, Inc. 2020 www.AgriDataInc.com

Field borders provided by Farm Service Agency as of 5/21/2008.



©2020 AgriData, Inc.



Source: USGS 3 meter dem

Interval(ft): 2

Min: 1,165.9

Max: 1,176.0

Range: 10.1

Average: 1,172.3

Standard Deviation: 2.23 ft



**1-19S-10E**  
**Lyon County**  
**Kansas**

map center: 38° 25' 16.02, -96° 15' 0.77

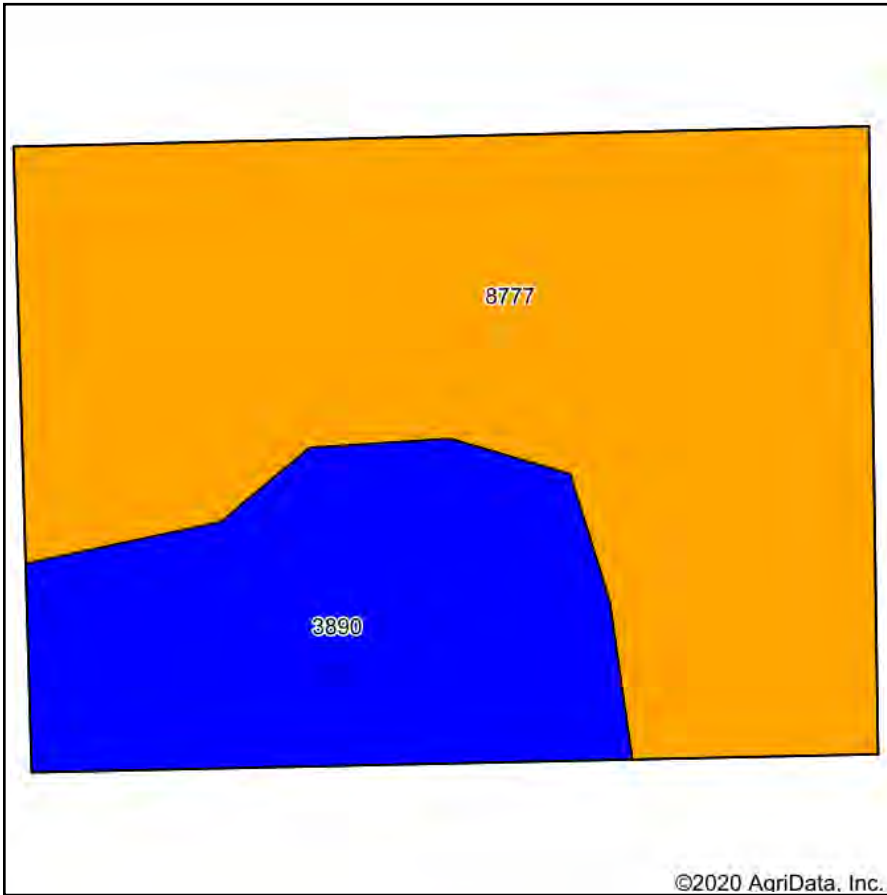
Maps Provided By:



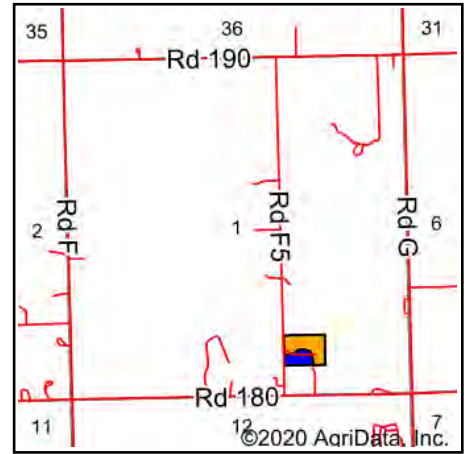
© AgriData, Inc. 2020 www.AgriDataInc.com

Field borders provided by Farm Service Agency as of 5/21/2008.

# Soils Map



Soils data provided by USDA and NRCS.



State: **Kansas**  
 County: **Lyon**  
 Location: **1-19S-10E**  
 Township: **Pike**  
 Acres: **6.84**  
 Date:

Maps Provided By:



Area Symbol: KS111. Soil Area Version: 19							
Code	Soil Description	Acres	Percent of field	Non-Irr Class Legend	Non-Irr Class *c	Irr Class *c	*n NCCPI Soybeans
8777	Kenoma silty clay loam, 1 to 3 percent slopes, eroded	4.77	69.7%		Ille		50
3890	Ladysmith silty clay loam, 0 to 1 percent slopes	2.07	30.3%		Ils	Ils	51
<b>Weighted Average</b>							<b>*n 50.3</b>

\*n: The aggregation method is "Weighted Average using all components"

\*c: Using Capabilities Class Dominant Condition Aggregation Method

Soils data provided by USDA and NRCS.