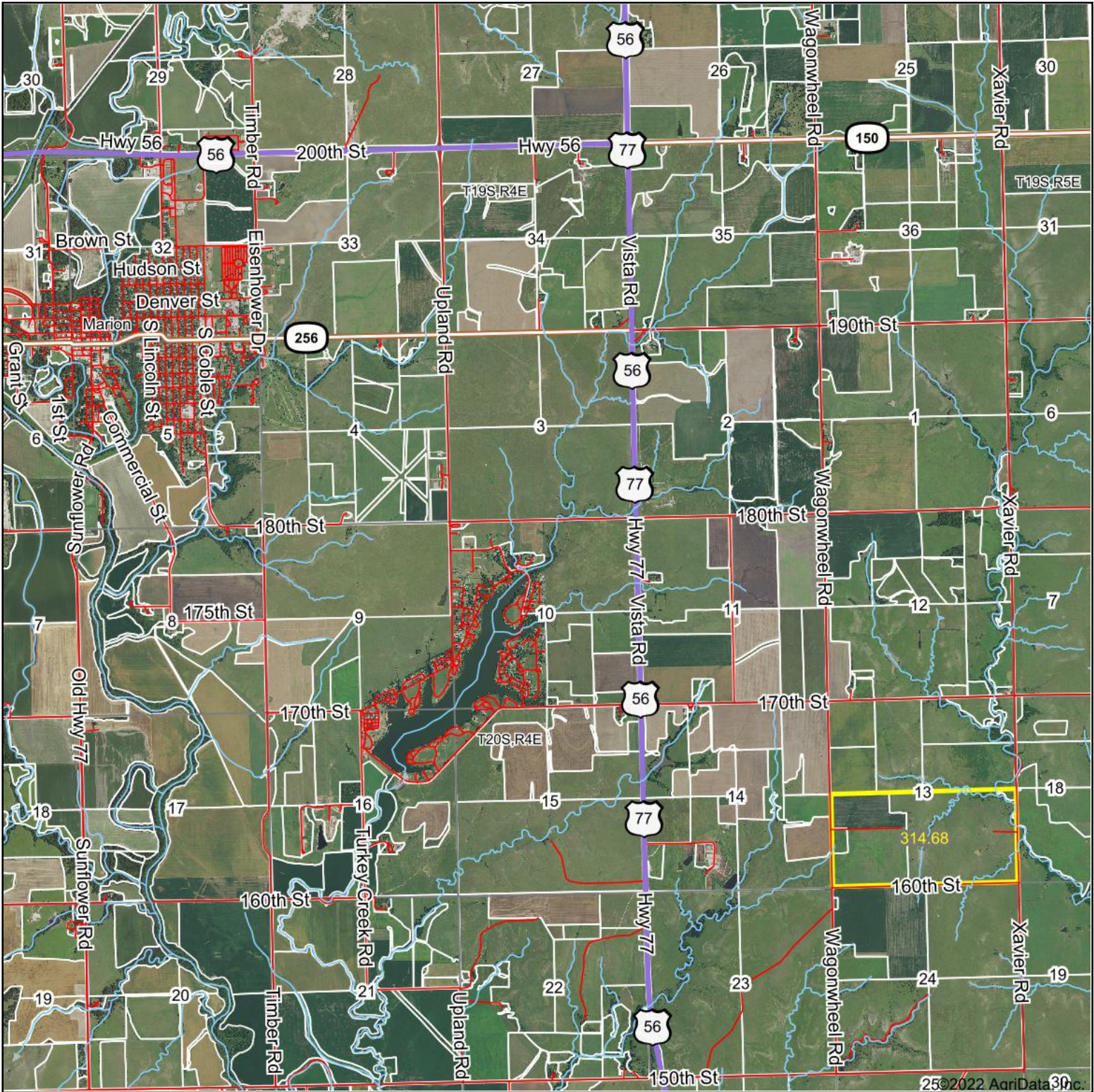


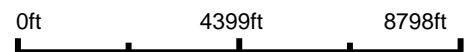
Aerial Map



25©2022 AgriData, Inc.



Map Center: 38° 19' 53.72, -96° 58' 32.02



10-20S-4E
Marion County
Kansas



1/24/2022

Maps Provided By:

CUSTOMIZED ONLINE MAPPING
© AgriData, Inc. 2021 www.AgriDataInc.com

Field borders provided by Farm Service Agency as of 5/21/2008.

Aerial Map

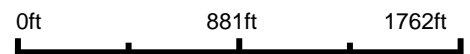


©2022 AgriData, Inc.

Griffin
Real Estate
& Auction



Map Center: 38° 18' 29.92, -96° 56' 21.45



13-20S-4E
Marion County
Kansas



1/24/2022

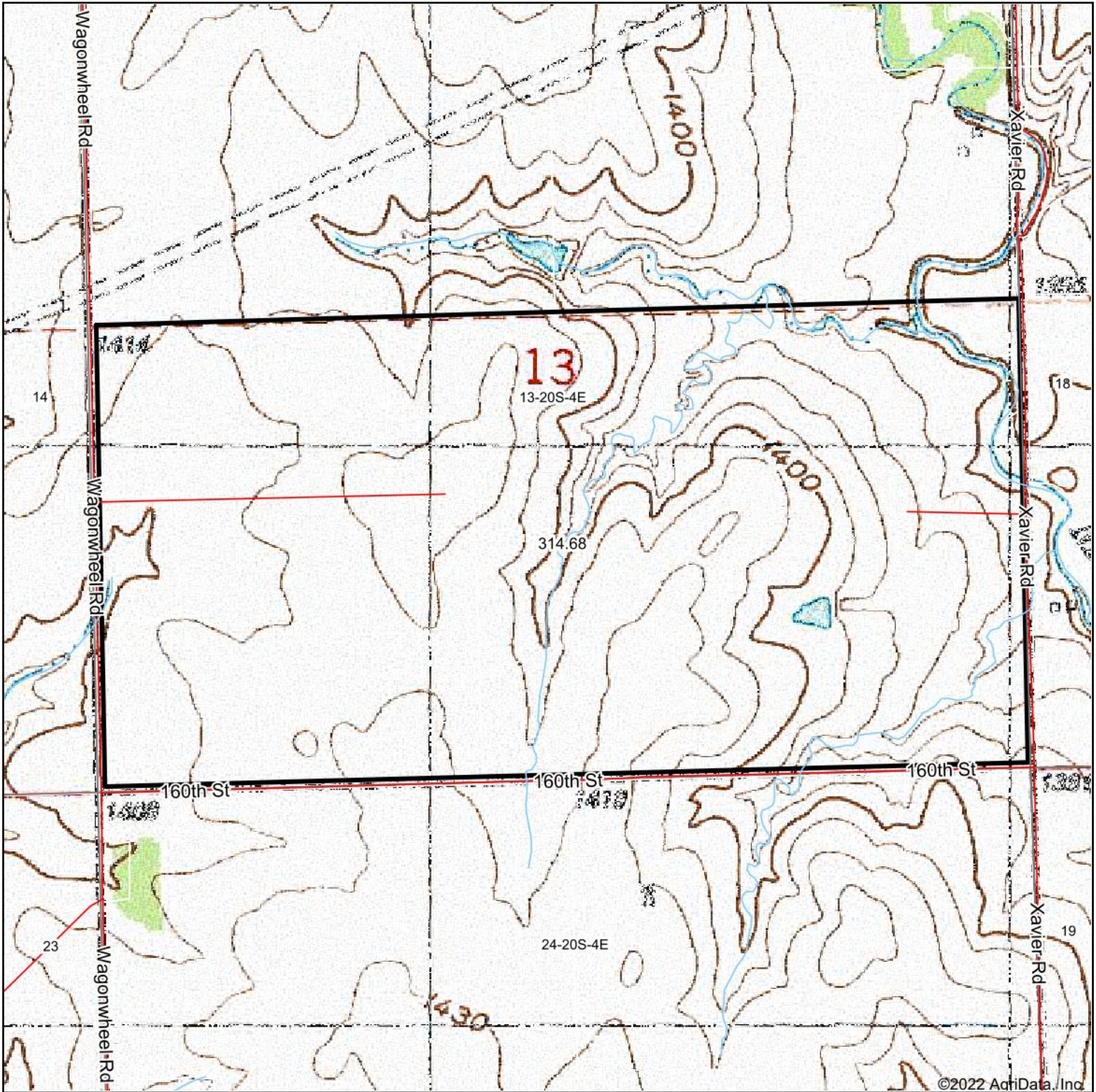
Maps Provided By:



© AgriData, Inc. 2021 www.AgriDataInc.com

Field borders provided by Farm Service Agency as of 5/21/2008.

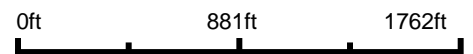
Topography Map



©2022 AgriData, Inc

Griffin
Real Estate
& Auction

map center: 38° 18' 29.92, -96° 56' 21.45



13-20S-4E
Marion County
Kansas



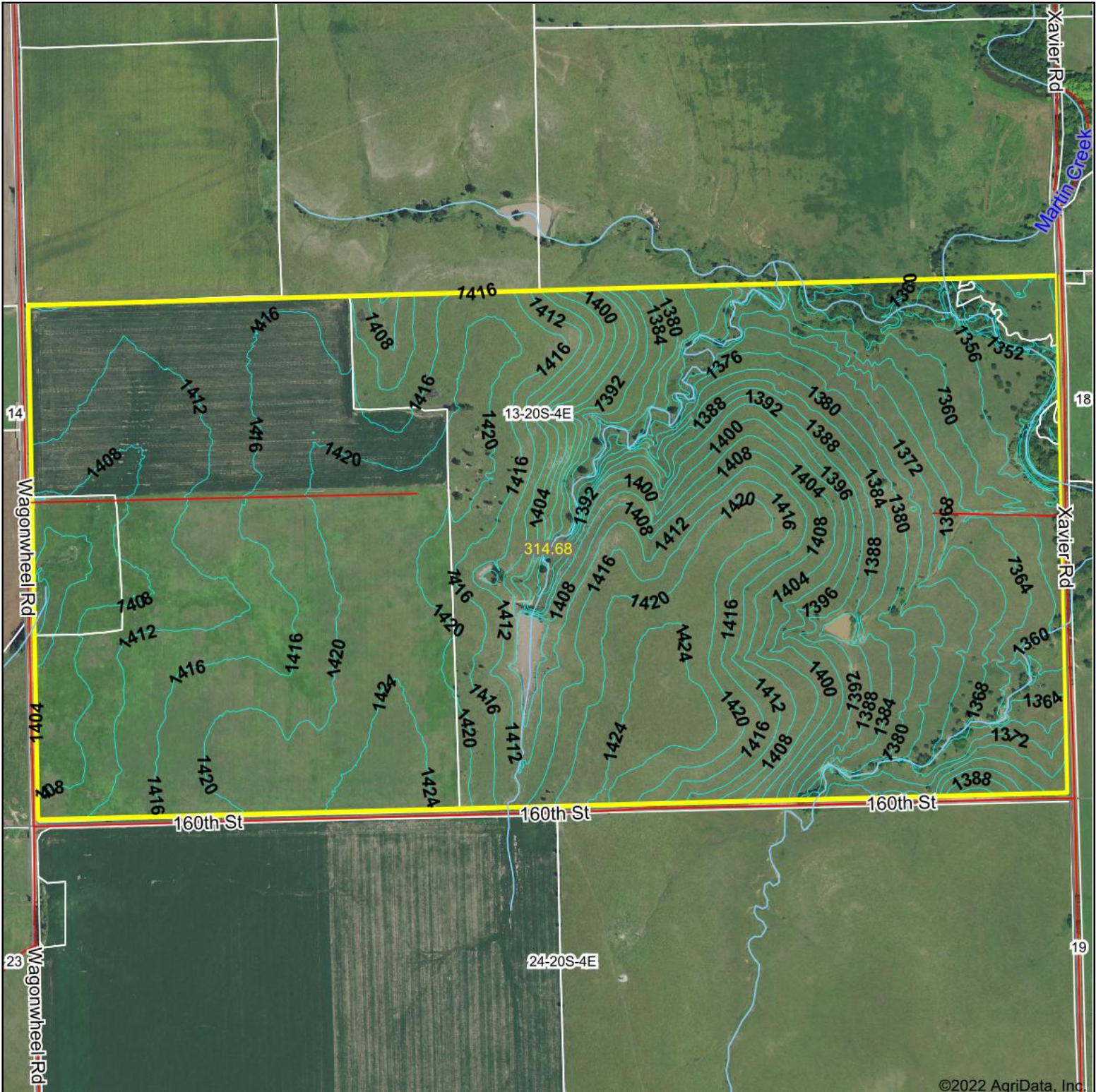
1/24/2022

Maps Provided By:

CUSTOMIZED ONLINE MAPPING
© AgriData, Inc. 2021 www.AgriDataInc.com

Field borders provided by Farm Service Agency as of 5/21/2008.

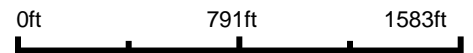
Topography Contours



©2022 AgriData, Inc.



Source: USGS 3 meter dem
Interval(ft): 4.0
Min: 1,345.8
Max: 1,427.0
Range: 81.2
Average: 1,401.7
Standard Deviation: 21.33 ft



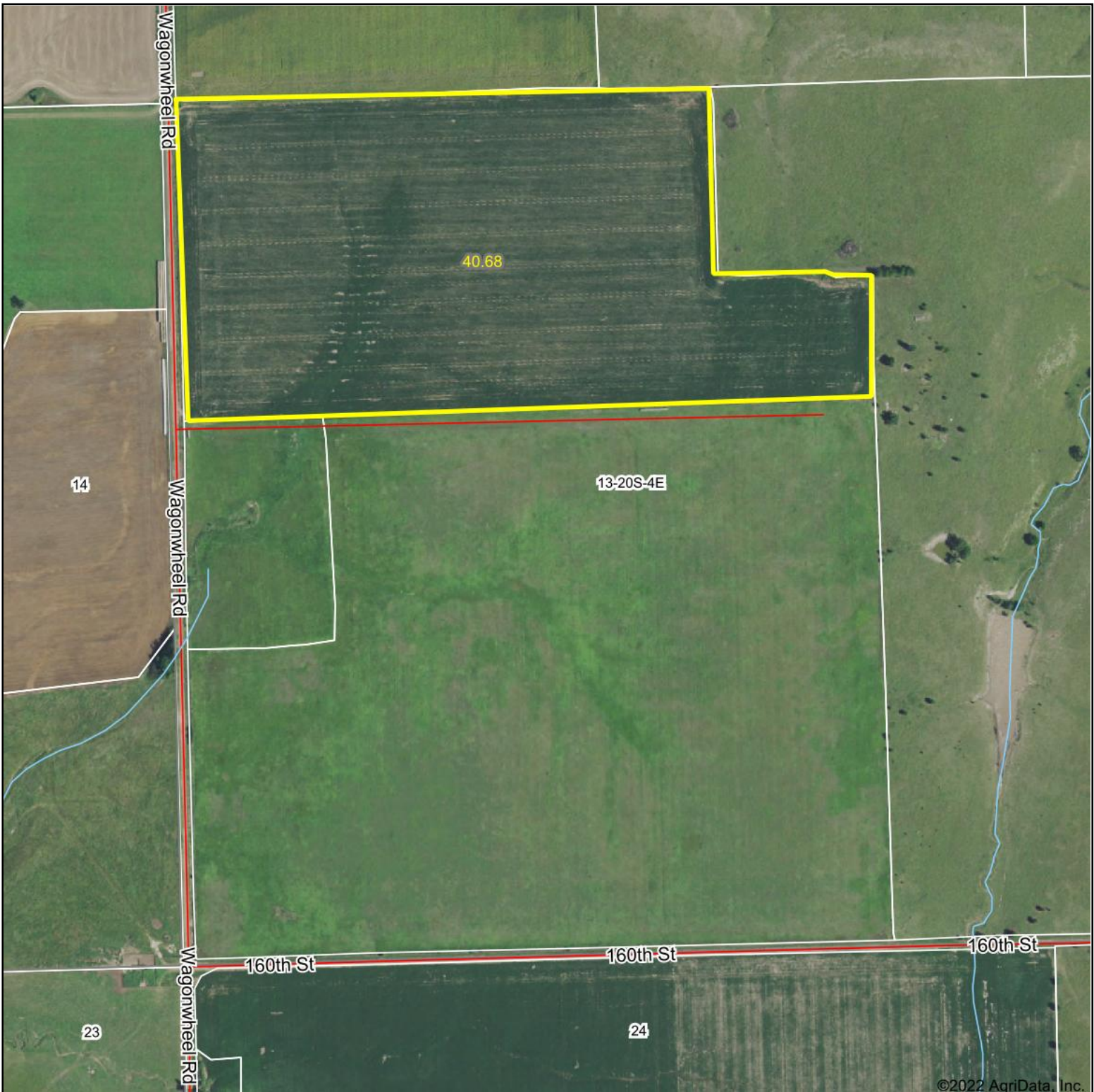
1/24/2022

13-20S-4E
Marion County
Kansas

Map Center: 38° 18' 29.92, -96° 56' 21.45

Field borders provided by Farm Service Agency as of 5/21/2008.

Aerial Map



Griffin
Real Estate
& Auction



Map Center: 38° 18' 29.14, -96° 56' 39.39



13-20S-4E
Marion County
Kansas

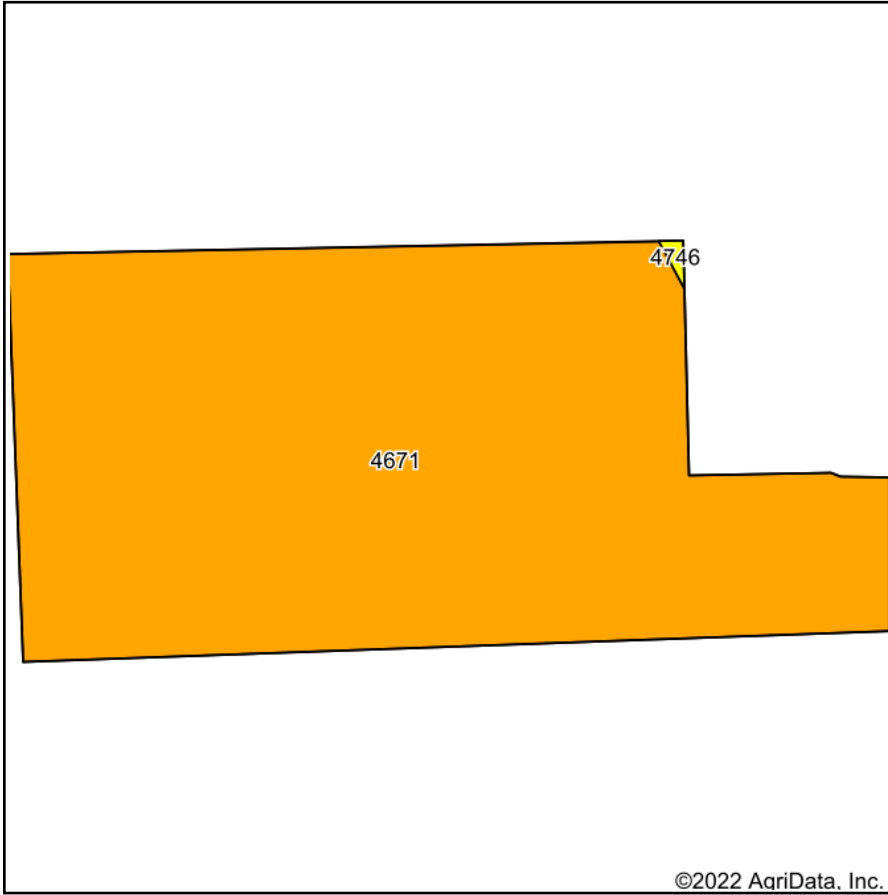


1/24/2022

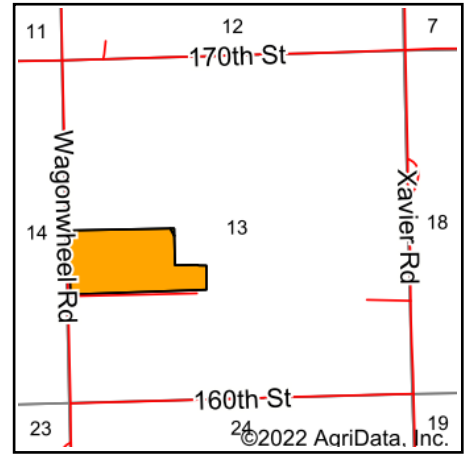
Maps Provided By:
 **surety**[®]
CUSTOMIZED ONLINE MAPPING
© AgriData, Inc. 2021 www.AgriDataInc.com

Field borders provided by Farm Service Agency as of 5/21/2008.

Soils Map



Soils data provided by USDA and NRCS.



State: **Kansas**
 County: **Marion**
 Location: **13-20S-4E**
 Township: **Centre**
 Acres: **40.68**
 Date: **1/24/2022**



Area Symbol: KS115, Soil Area Version: 18

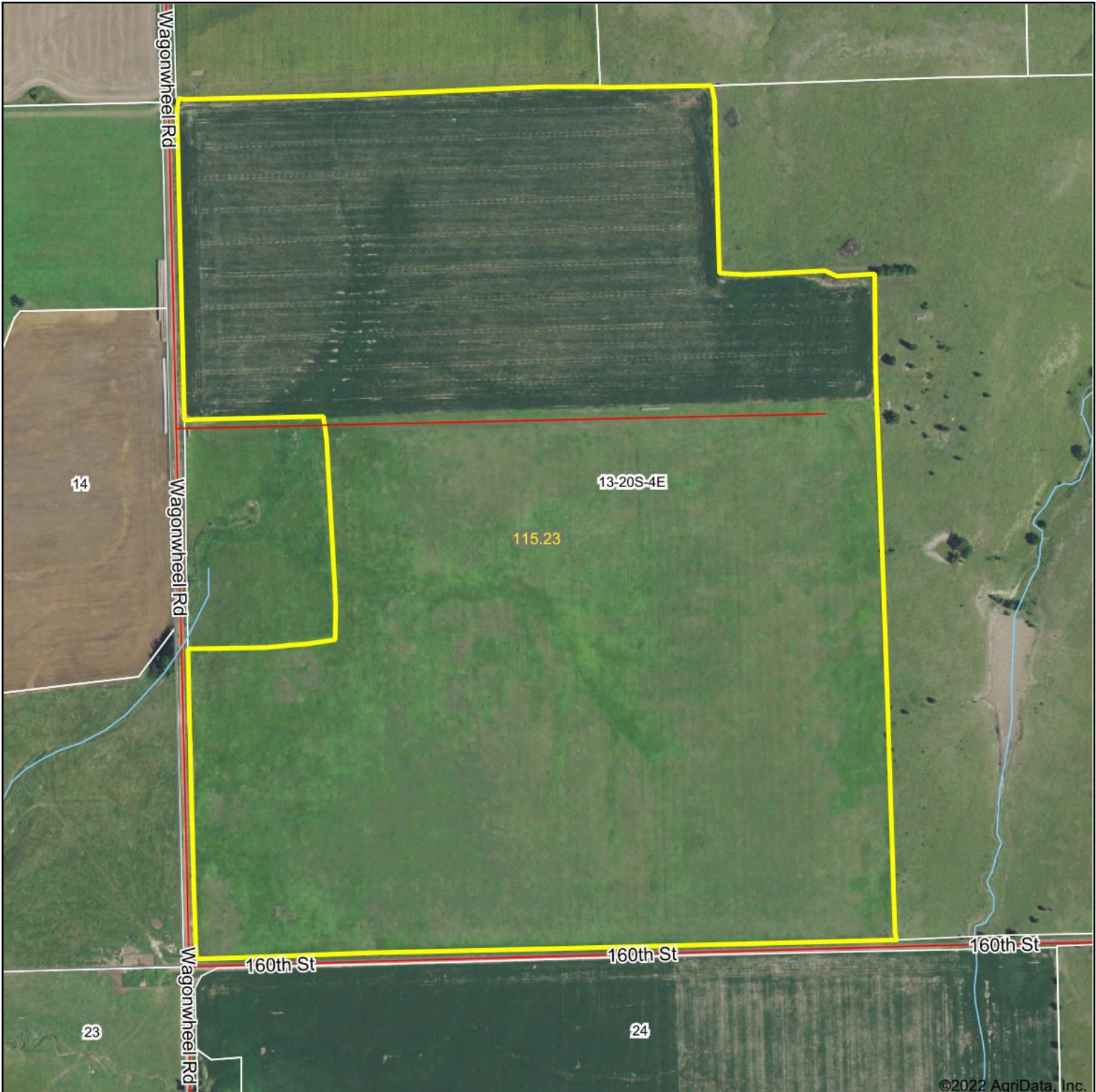
Code	Soil Description	Acres	Percent of field	Non-Irr Class Legend	Non-Irr Class *c	Irr Class *c	*n NCCPI Soybeans
4671	Irwin silty clay loam, 1 to 3 percent slopes	40.60	99.8%		IIIs	IIIs	56
4746	Labette-Sogn silty clay loam, 0 to 8 percent slopes	0.08	0.2%		IVe	IIIe	33
Weighted Average					3.00	3.00	*n 56

*n: The aggregation method is "Weighted Average using all components"

*c: Using Capabilities Class Dominant Condition Aggregation Method

Soils data provided by USDA and NRCS.

Aerial Map



©2022 AgriData, Inc.

Griffin
Real Estate
& Auction



Map Center: 38° 18' 29.14, -96° 56' 39.39



13-20S-4E
Marion County
Kansas

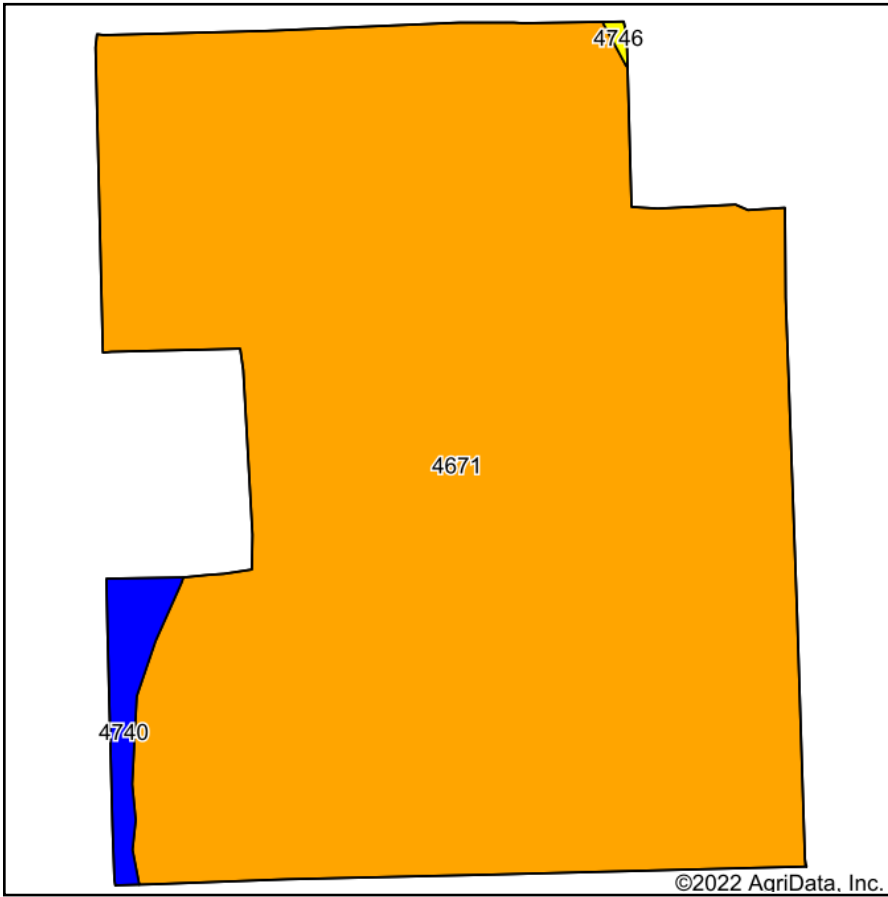


1/24/2022

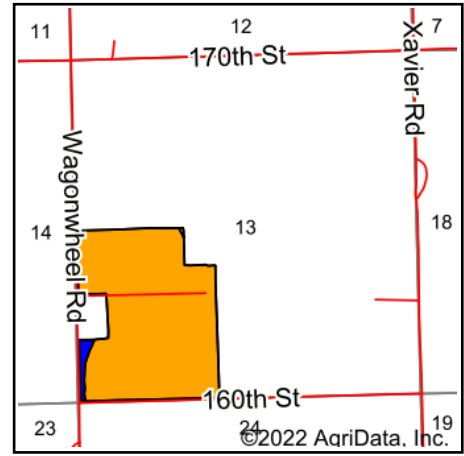
Maps Provided By:
 **surety**[®]
CUSTOMIZED ONLINE MAPPING
© AgriData, Inc. 2021 www.AgriDataInc.com

Field borders provided by Farm Service Agency as of 5/21/2008.

Soils Map



Soils data provided by USDA and NRCS.



State: **Kansas**
 County: **Marion**
 Location: **13-20S-4E**
 Township: **Centre**
 Acres: **115.23**
 Date: **1/24/2022**



Area Symbol: KS115, Soil Area Version: 18

Code	Soil Description	Acres	Percent of field	Non-Irr Class Legend	Non-Irr Class *c	Irr Class *c	*n NCCPI Soybeans
4671	Irwin silty clay loam, 1 to 3 percent slopes	112.83	97.9%		III s	III s	56
4740	Labette silty clay loam, 1 to 3 percent slopes	2.28	2.0%		II e	II e	43
4746	Labette-Sogn silty clay loam, 0 to 8 percent slopes	0.12	0.1%		IV e	III e	33
Weighted Average					2.98	2.98	*n 55.7

*n: The aggregation method is "Weighted Average using all components"

*c: Using Capabilities Class Dominant Condition Aggregation Method

Soils data provided by USDA and NRCS.