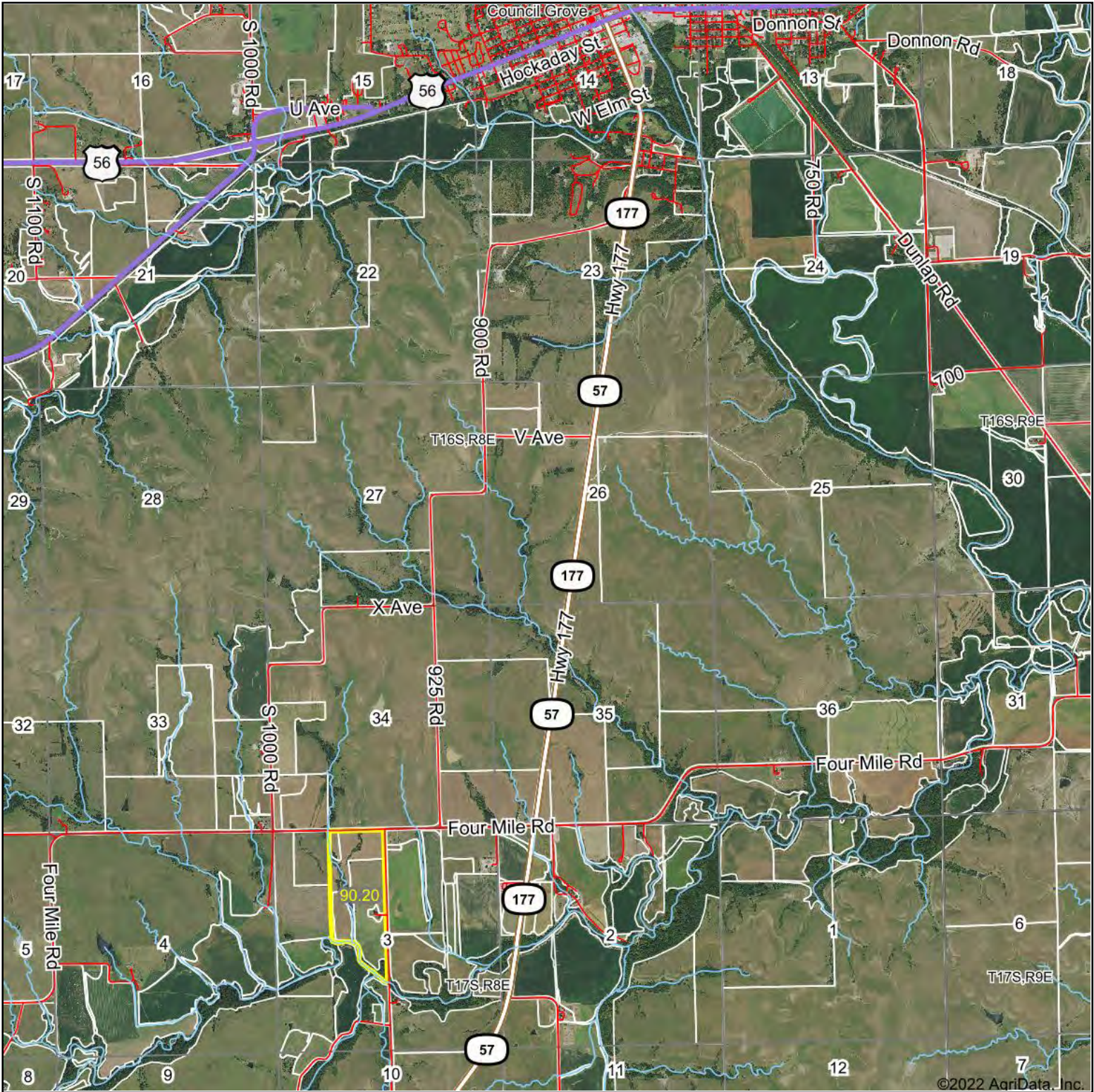


# Aerial Map



Map Center: 38° 37' 36.46, -96° 29' 47.8

0ft 3697ft 7394ft

**26-16S-8E**  
**Morris County**  
**Kansas**



1/13/2022

*Griffin*  
**Real Estate**  
*& Auction*



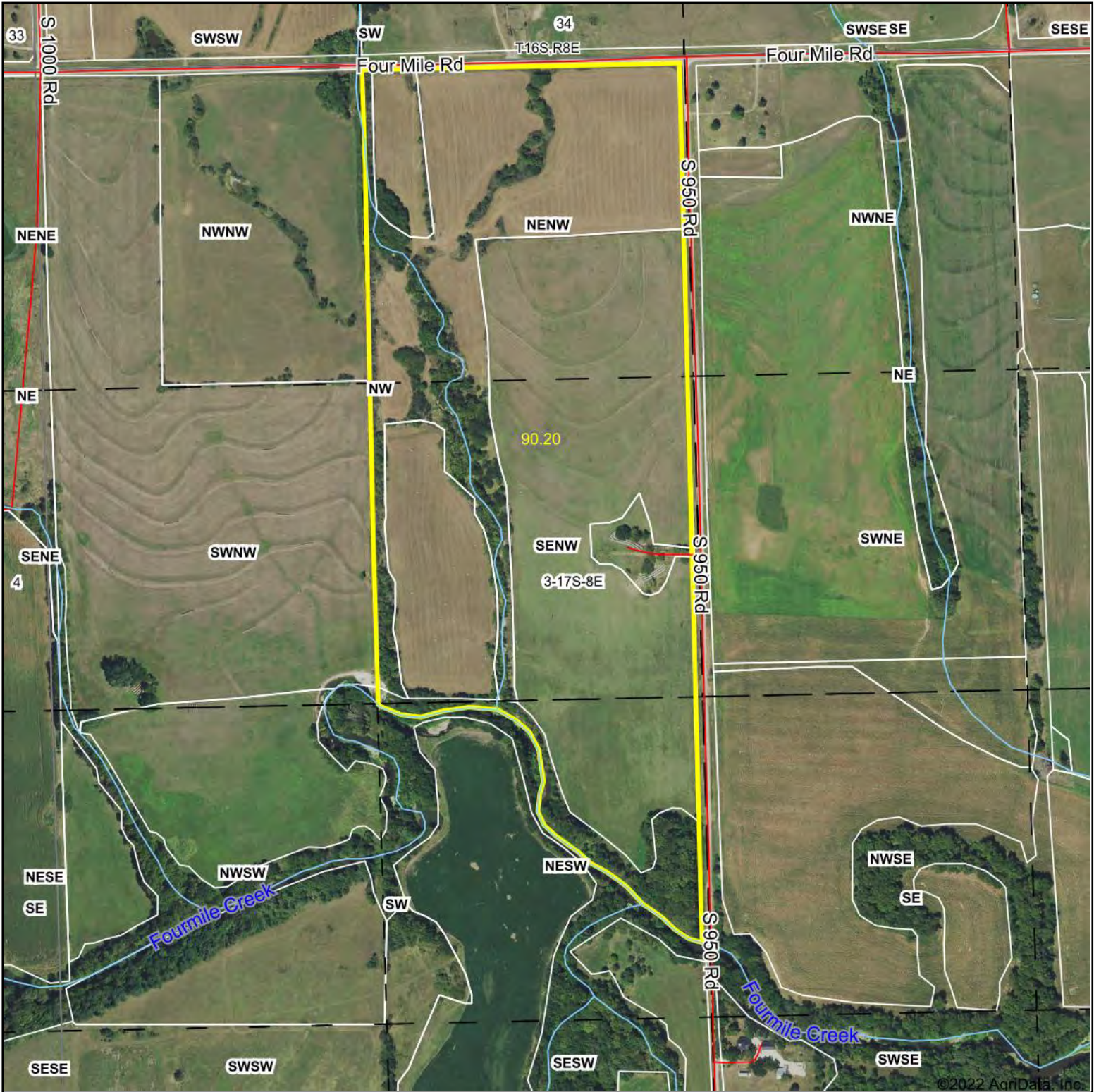
Maps Provided By:

 **surety**  
CUSTOMIZED ONLINE MAPPING

© AgriData, Inc. 2021 www.AgriDataInc.com

Field borders provided by Farm Service Agency as of 5/21/2008.

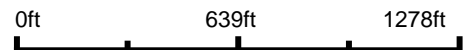
# Aerial Map



©2022 AgriData, Inc.



Map Center: 38° 36' 11.53, -96° 30' 46.51



**3-17S-8E**  
**Morris County**  
**Kansas**

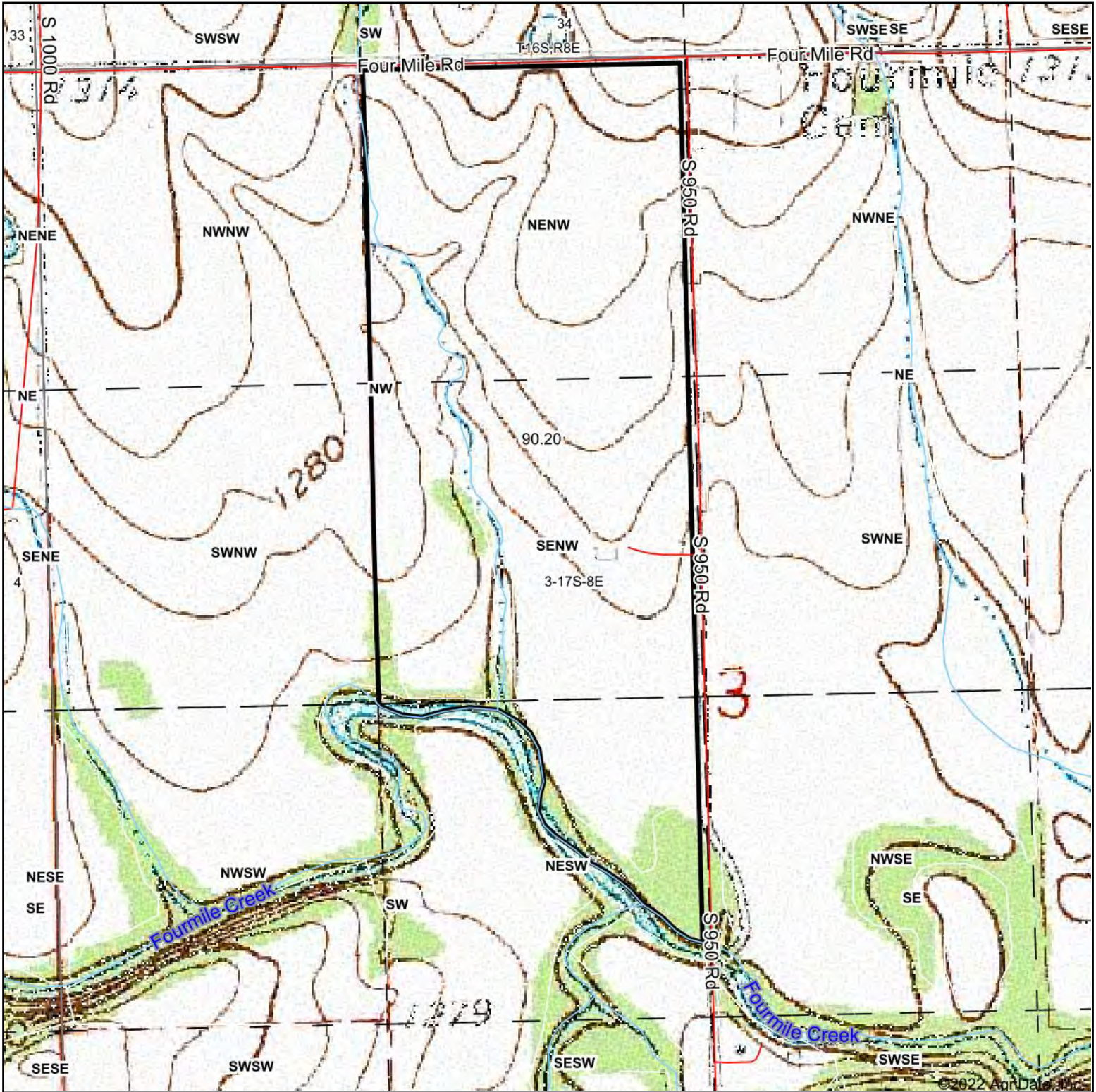


1/13/2022

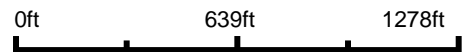
Maps Provided By:  
  
CUSTOMIZED ONLINE MAPPING  
© AgriData, Inc. 2021 www.AgriDataInc.com

Field borders provided by Farm Service Agency as of 5/21/2008.

# Topography Map



map center: 38° 36' 11.53, -96° 30' 46.51



**3-17S-8E**  
**Morris County**  
**Kansas**



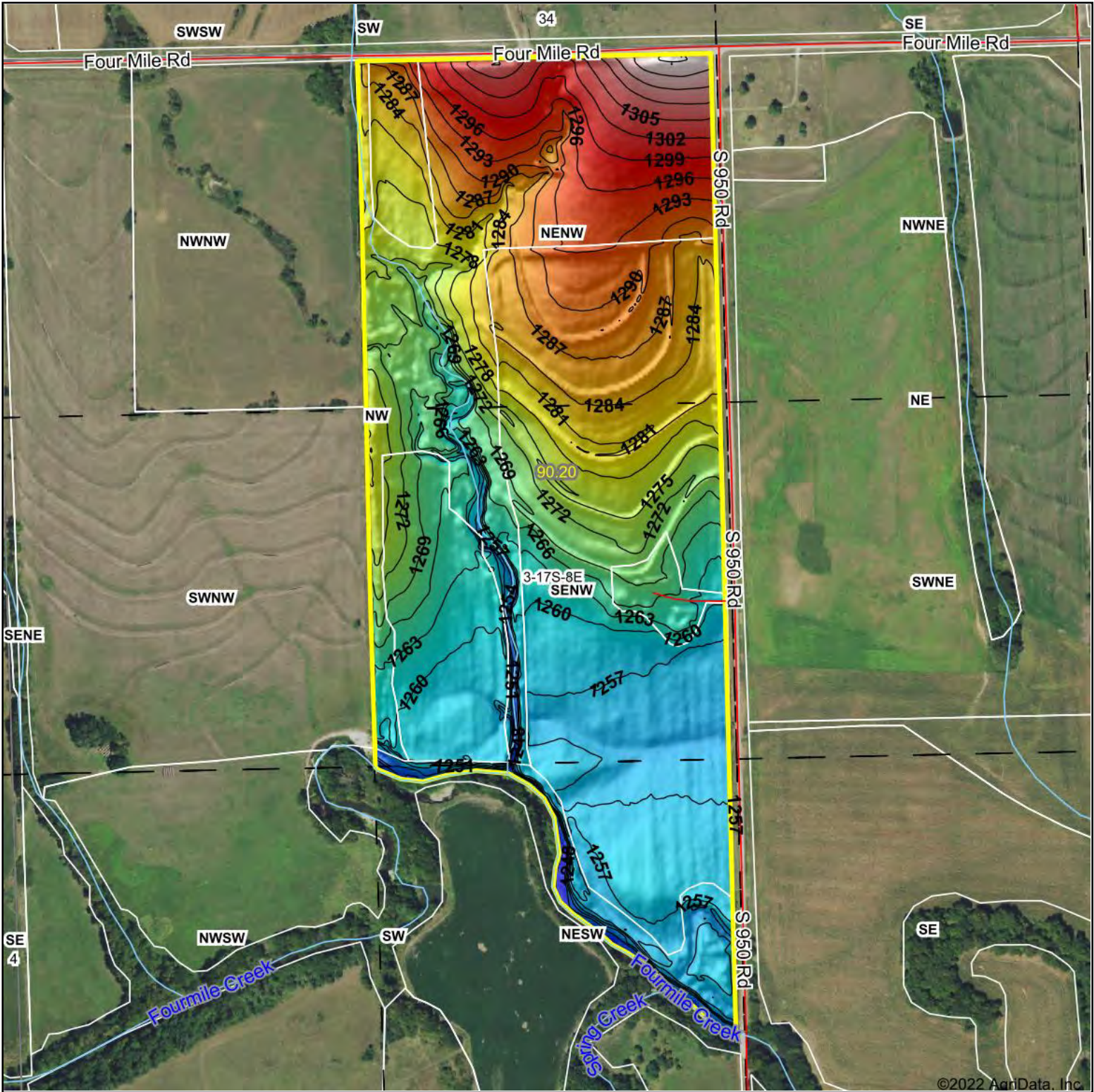
1/13/2022

Griffin  
Real Estate  
& Auction

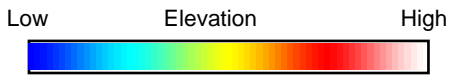
Maps Provided By:  
  
CUSTOMIZED ONLINE MAPPING  
© AgriData, Inc. 2021 www.AgridataInc.com



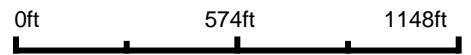
# Topography Hillshade



©2022 AgriData, Inc.



Source: USGS 3 meter dem



Interval(ft): 3

Min: 1,241.9

Max: 1,317.5

Range: 75.6

Average: 1,274.0

Standard Deviation: 15.42 ft



1/13/2022

**3-17S-8E**  
**Morris County**  
**Kansas**

map center: 38° 36' 11.53, -96° 30' 46.51

Griffin  
Real Estate  
& Auction

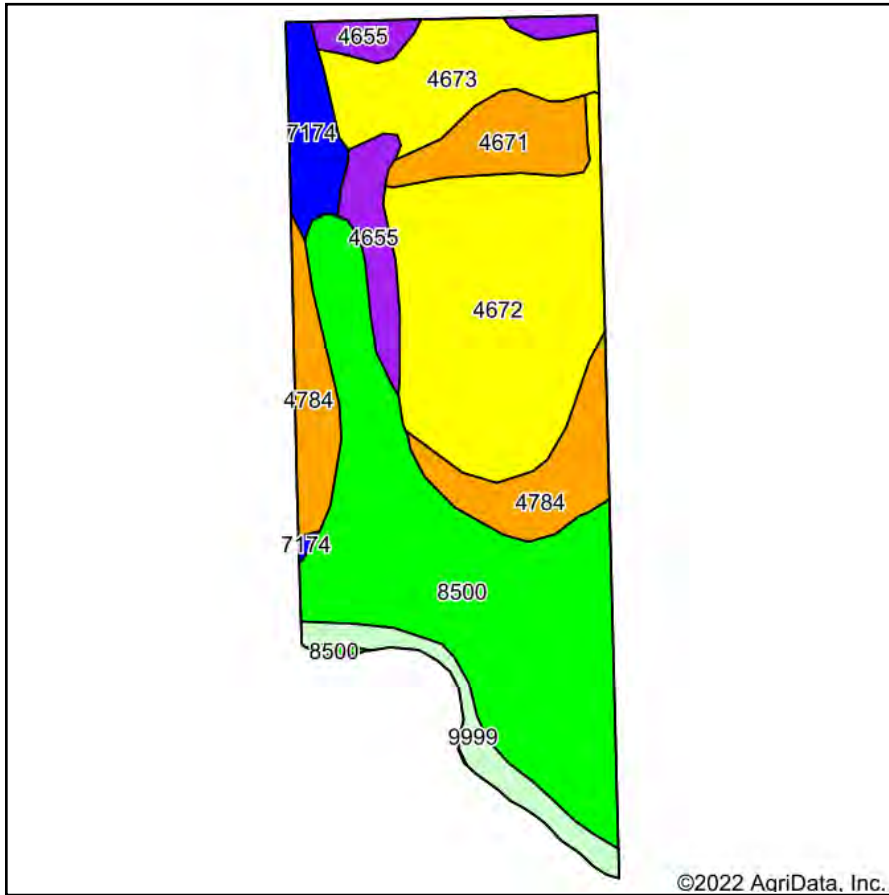
Maps Provided By:



© AgriData, Inc. 2021 www.AgriDataInc.com

Field borders provided by Farm Service Agency as of 5/21/2008.

# Soils Map



Soils data provided by USDA and NRCS.



State: **Kansas**  
 County: **Morris**  
 Location: **3-17S-8E**  
 Township: **Township No. 1**  
 Acres: **90.2**  
 Date: **1/13/2022**



Area Symbol: KS127, Soil Area Version: 18

Code	Soil Description	Acres	Percent of field	Non-Irr Class Legend	Non-Irr Class *c	Irr Class *c	*n NCCPI Soybeans
8500	Mason and Reading silt loams, rarely flooded	31.03	34.4%		Iw	Iw	79
4672	Irwin silty clay loam, 1 to 3 percent slopes, eroded	22.96	25.5%		IVe	IVe	50
4784	Tully silty clay loam, 3 to 7 percent slopes, eroded	9.45	10.5%		IIIe	IIIe	52
4673	Irwin silty clay loam, 3 to 7 percent slopes	9.07	10.1%		IVe	IVe	57
4655	Florence-Labette complex, 2 to 12 percent slopes	5.33	5.9%		VIe	VIe	36
4671	Irwin silty clay loam, 1 to 3 percent slopes	4.91	5.4%		IIIIs	IIIIs	56
9999	Water	3.80	4.2%				
7174	Reading silt loam, 1 to 3 percent slopes	3.65	4.0%		Ile	Ile	76
<b>Weighted Average</b>					<b>2.68</b>	<b>2.68</b>	<b>*n 59.3</b>

\*n: The aggregation method is "Weighted Average using all components"

\*c: Using Capabilities Class Dominant Condition Aggregation Method

Soils data provided by USDA and NRCS.