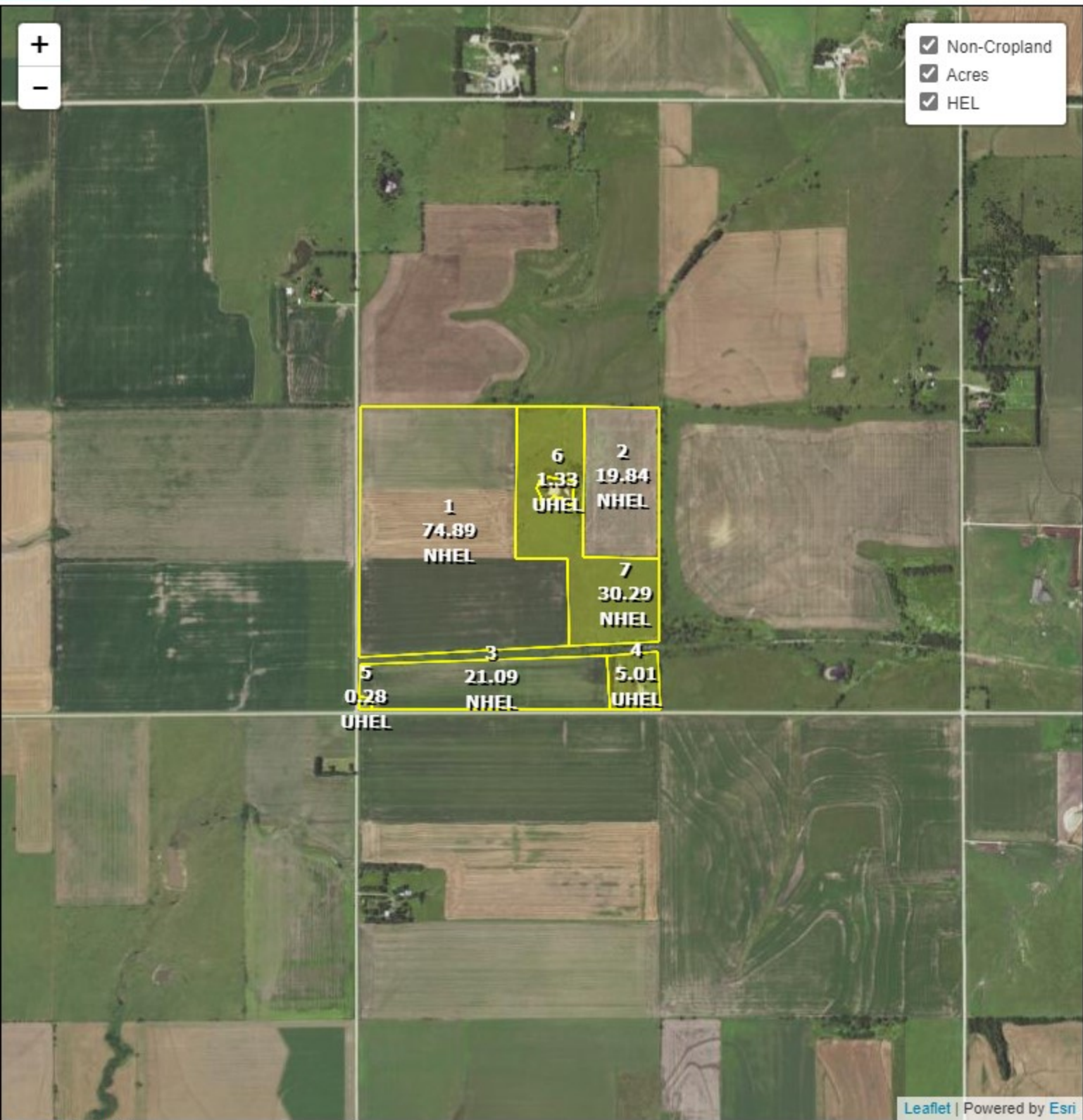




- Non-Cropland
- Acres
- HEL



Leaflet | Powered by Esri

Common Land Unit
 Cropland
 Non-cropland
 CRP

Farm 2852
Tract 1017

Wetland Determination Identifiers

- Restricted Use
- ▼ Limited Restrictions
- Exempt from Conservation Compliance Provisions

2022 Crop Year



Tract Number: 1017 Description SW/4 16-17-5

FSA Physical Location : Morris, KS

ANSI Physical Location: Morris, KS

BIA Range Unit Number:

HEL Status: NHEL: no agricultural commodity planted on undetermined fields

Wetland Status: Tract does not contain a wetland

WL Violations: None

Farmland	Cropland	DCP Cropland	WBP	WRP	EWP	CRP Cropland	GRP
152.73	115.82	115.82	0.0	0.0	0.0	0.0	0.0
State Conservation	Other Conservation	Effective DCP Cropland	Double Cropped	MPL/FWP			
0.0	0.0	115.82	0.0	0.0			
Crop	Base Acreage	PLC Yield	CCC-505 CRP Reduction				
WHEAT	28.17	49	0.00				

Kansas

Morris

Report ID: FSA-156EZ

U.S. Department of Agriculture

Farm Service Agency

Abbreviated 156 Farm Record

FARM: 2852

Prepared: 1/4/22 2:21 PM

Crop Year: 2022

Page: 2 of 2

DISCLAIMER: This is data extracted from the web farm database. Because of potential messaging failures in MIDAS, this data is not guaranteed to be an accurate and complete representation of data contained in the MIDAS system, which is the system of record for Farm Records.

Crop	Base Acreage	PLC Yield	CCC-505 CRP Reduction
CORN	17.73	101	0.00
GRAIN SORGHUM	4.64	52	0.00
SOYBEANS	40.19	31	0.00
Total Base Acres:	90.73		

Owners: NELSON, RICHARD E
NELSON, CORRINE M
NELSON, JON H

NELSON, KARIN J
ANDERSON, RUTH E

Other Producers: None