

ONLINE AUCTION

480+
LOTS

AUCTION

PREVIEW
ON SUNDAY
9/12/2021
FROM 3-5pm

**BIDDING OPENS AT 10AM ON 9/3/2021 AND WILL
BEGIN CLOSING AT 2PM ON MONDAY, 9/13/2021**

**PICK UP/PREVIEW LOCATION: 2513 Unicorn, Lincolnvile, KS 66858 (in Antelope, KS)
PICKUP TIME: Tuesday, SEPT. 14 from 2-7pm AND Wednesday, SEPT. 15 from 11-3pm**



AUCTIONEER'S NOTE: This is an ONLINE AUCTION only with over 480 lots. Come and check out a lot of the cool barn finds we discovered, plus a lot of unique antiques and collectibles. Go to our website for a link to bid online and give us a call if you have any questions. This is only a partial listing. From the Estate of Sandy Loveless, located in Antelope, KS.

ANTIQUES & COLLECTIBLES: Pyrex Sunflower Casserole Dish; Atari 2600 & Games; 1916 Marion High School Yearbook; Maytag Fuel Mixing Can; Chrome Vehicle Ornaments; Wood Ship Models; Red Coleman Lantern; Mantle Clocks; Old Milwaukee Lighted Sign; Military Items; Vintage Postcards; Antiques Books, Manuals, Magazine, Kids Books; Vinyl Records; Hard Plastic Santa; Aluminum Christmas Tree; Metal Rolling Cart; Vintage Toys; Misc Antique Keys, Pocket Knives, Jewelry, Boardgames, Lighters, Ashtrays, China, Lamps, Framed Prints;

FURNITURE: Kitchen Cupboard/Pie Safe; Built-In Wood Shelves; Oak Dresser w/Beveled Mirror; Oak Chest of Drawers; Oak Wash Stand; Oak Highback Bed; Cast Iron Headboard; Pressed Back Chairs; Round Oak Dining Table; Roll Top Style Desk, Newer; Singer Sewing Machine w/Stand; Metal Enamel Top Kitchen Cabinet; Zenith Console Record Player; Victrola Model VV 4-40 Phonograph; Flattop Trunk; Sentry Safe; Kitchen Cabinet;

MOWER & TOOLS: John Deere LT 166 46" Riding Mower, Hydro; Misc Garden Tools; Step & Ext Ladders; Cutting Torch Cart w/ Older Gauges; Pipe Clamps; Hi/Lo Jack; 16" Variable Speed Scroll Saw; Vertical Wood Cutting Band Saw, 220V; ITT Air Compressor; 4" Belt & 8" Disc Sander; Ashland Bench Grinder; Ryobi 10" Miter Saw; Sears Air Compressor, 220V; Roll of Woven Wire; Misc Lumber; Wheel Barrow; Hastings Watering Tank; Misc Shop Tools;

PRIMITIVES & BARN FINDS: Metal Lawn Chairs x7 & Glider; Double Sided Porcelain Sign-American Man. Co. of Texas & Ladies; Horse Weather Vane; Wash Tub w/ Stand; Double & Single Wash Tubs; Enamel Top Drop Leaf Table; Rod Iron Garden Arch; Vintage Bikes; Locker Baskets; Cast Topeka Paper Roll Dispenser; White Mountain Ice Cream Freezer; Wooden Barrel; Bird Bath; Kids Cast & Wood Park Bench; Wall Cabinet w/ Green Glass Knobs; Sewing Machine Bases; Misc Doors, Windows, Screens; Chevy Grill; Vintage Green Sink & Stool; Ford Truck Tailgate; Tongue & Groove Flooring, Trim, Buttons; Brands; Pair of Hudson Super Six Screw on Hubs, IH Mirror;

HOUSEHOLD & MISC: Sanyo DVD Player; DVD Sets & Movies, VHS, CDs, Records; Misc Utensils & Kitchen Items; Misc Radios; Air Conditioners & Heaters;

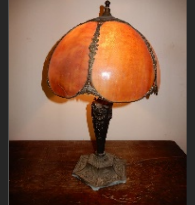
TERMS: Full Terms Available Online. 10% buyer's premium for online bidding. Full set of terms and conditions take precedence over said terms. All sales are final, there are no refunds, exchanges, or refusals, all sales are final. These terms & conditions constitute a CONTRACT between you, the bidder, and the auction company. Do not submit any bids unless you understand and agree to all terms and conditions online. It's the responsibility of the buyer to inspect all items online prior to bidding, you make your own judgements and bid accordingly.



Griffin Real Estate & Auction

CHUCK MAGGARD
Sales/Auctioneer
Cell: 620-794-8824

ANDY PHIPPS
Auctioneer
Cell: 620-794-1673



305 Broadway, Cottonwood Falls, KS 66845
Phone: 620-273-6421 • Fax: 620-273-6425 • Toll Free: 1-866-273-6421
griffinrealestateauction@gmail.com

