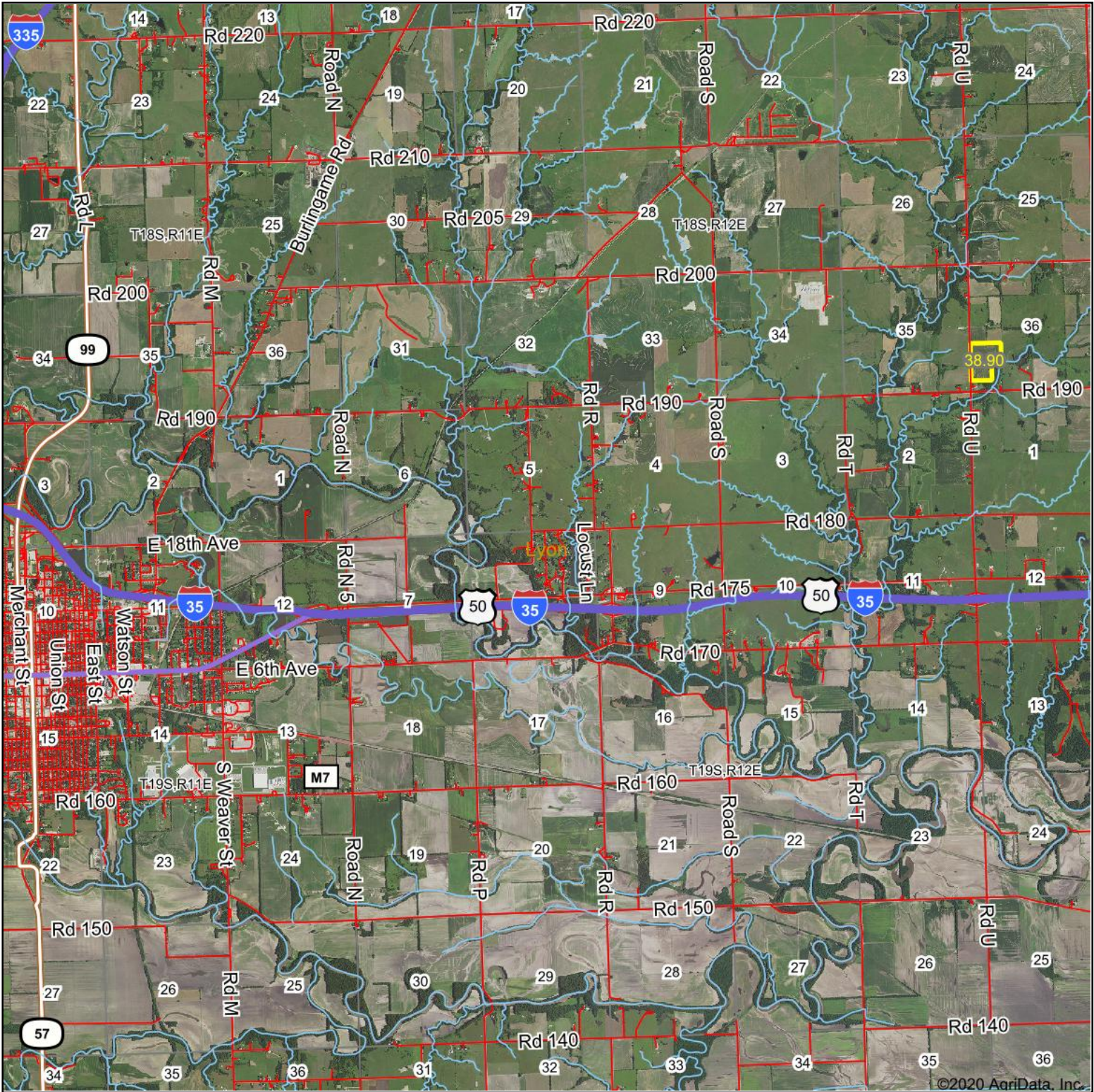


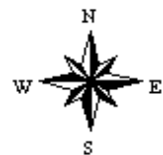
# Aerial Map



Map Center: 38° 25' 4.12, -96° 6' 17.21

0ft 6481ft 12963ft

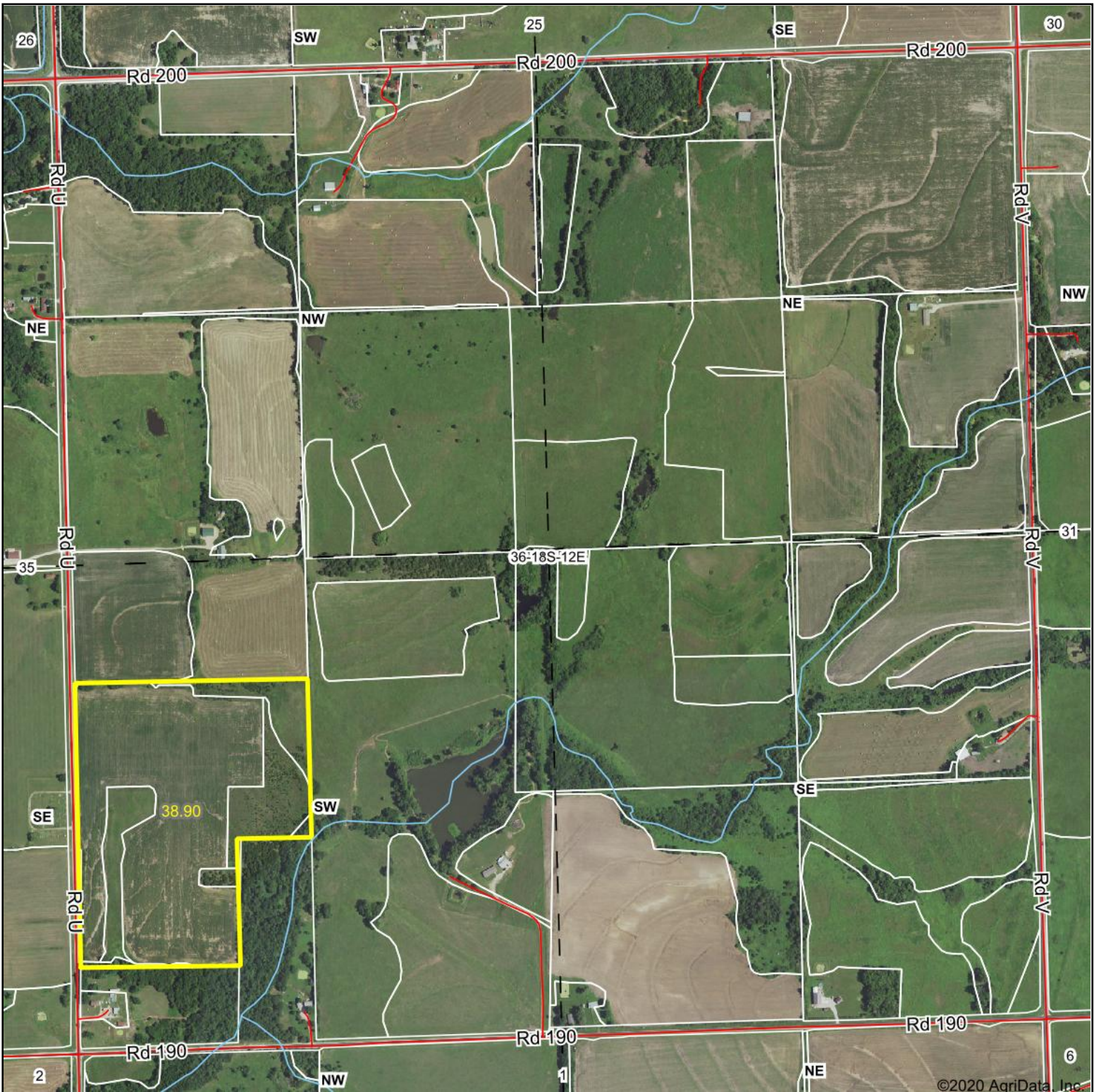
**8-19S-12E**  
**Lyon County**  
**Kansas**



10/8/2020



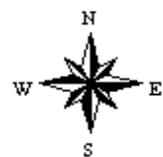
# Aerial Map



Map Center: 38° 26' 28.94, -96° 1' 59.82



**36-18S-12E**  
**Lyon County**  
**Kansas**



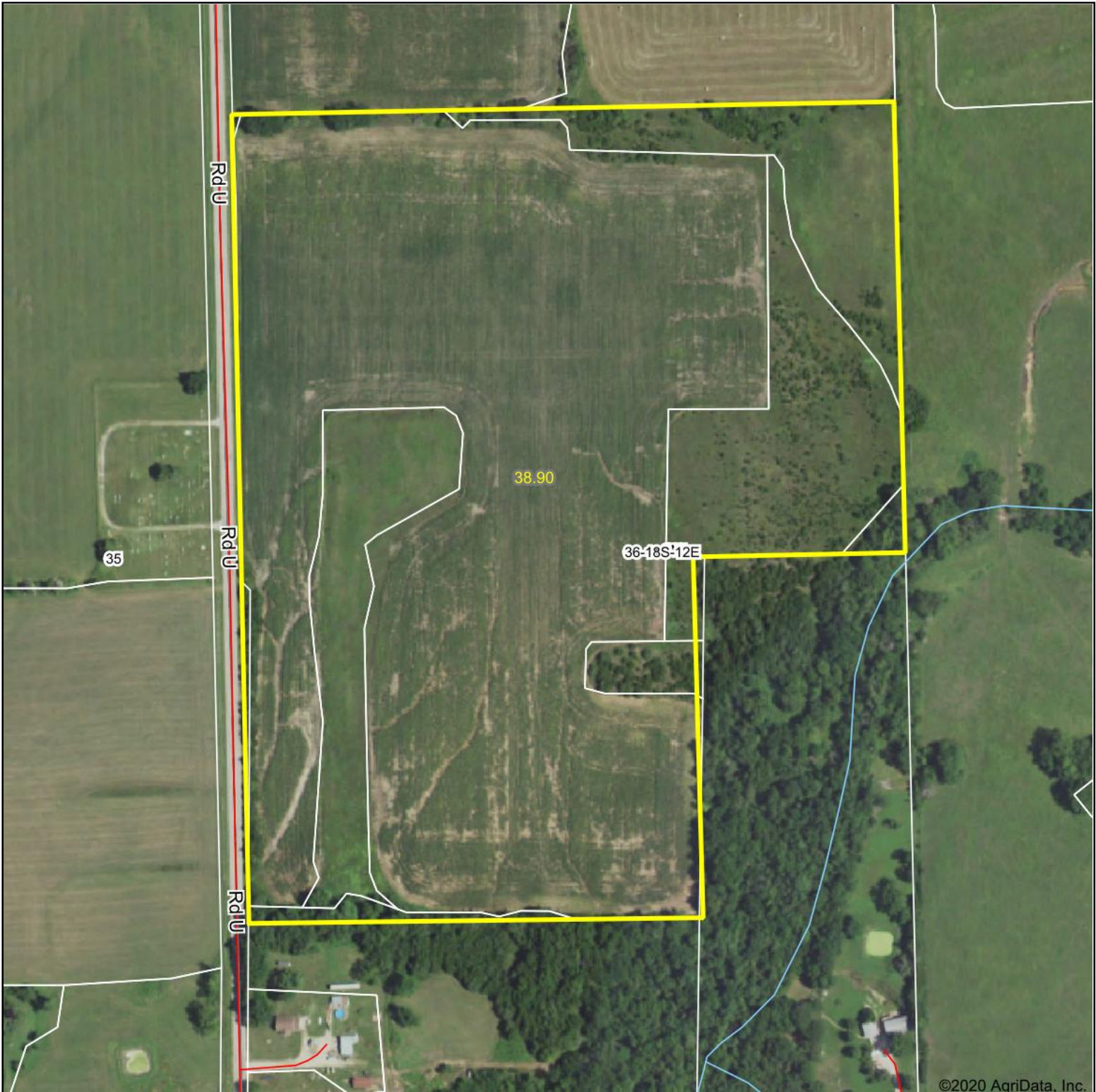
10/8/2020

Maps Provided By:  
  
CUSTOMIZED ONLINE MAPPING  
© AgriData, Inc. 2020 www.AgriDataInc.com

Field borders provided by Farm Service Agency as of 5/21/2008.

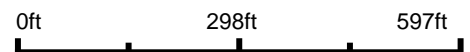


# Aerial Map

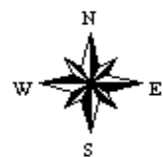


©2020 AgriData, Inc.

Map Center: 38° 26' 14.11, -96° 2' 25.13



**36-18S-12E**  
**Lyon County**  
**Kansas**



10/8/2020

Maps Provided By:



CUSTOMIZED ONLINE MAPPING

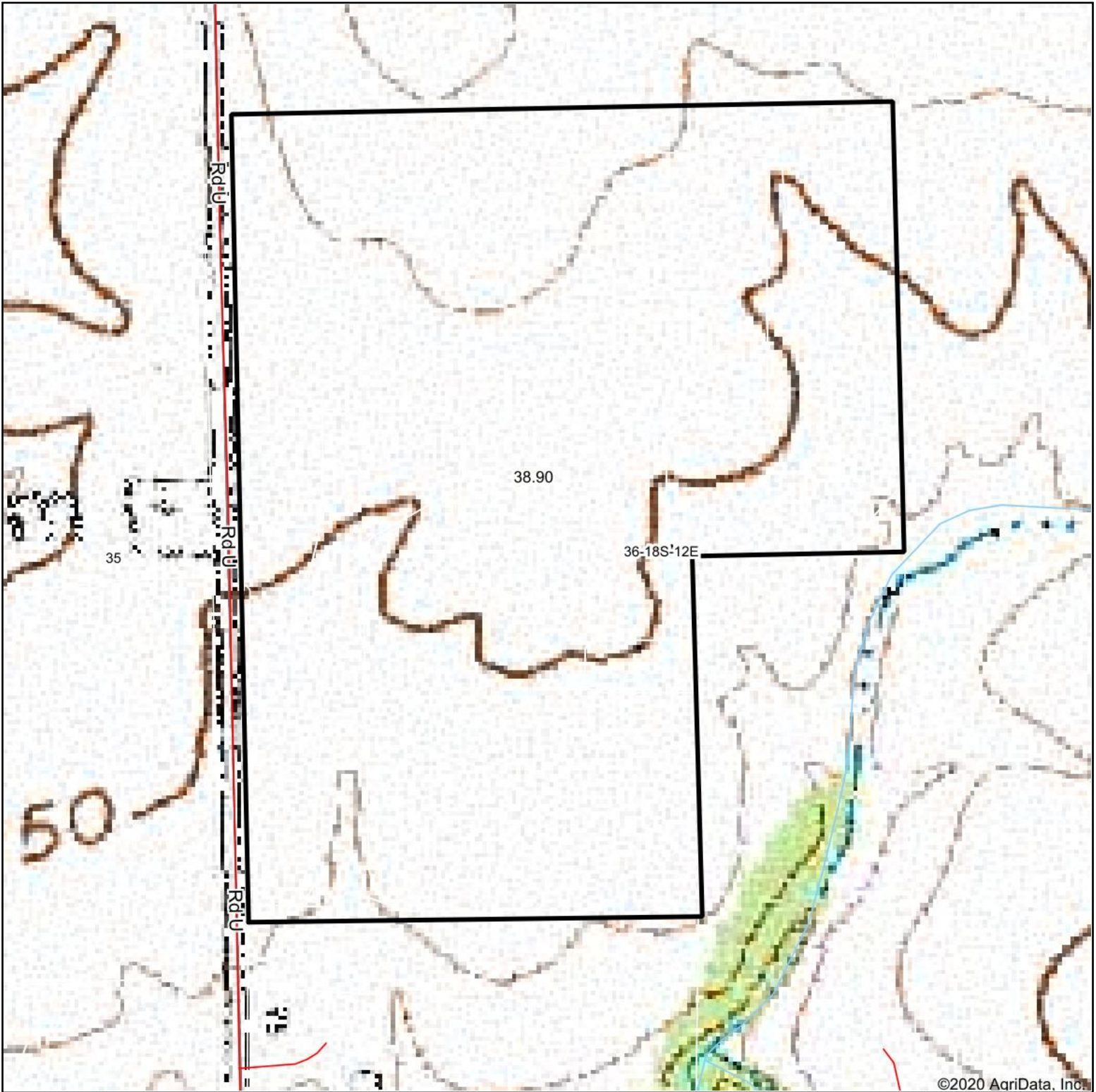
© AgriData, Inc. 2020

www.AgriDataInc.com

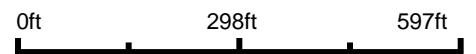
Field borders provided by Farm Service Agency as of 5/21/2008.



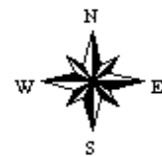
# Topography Map



map center: 38° 26' 14.11, -96° 2' 25.13



**36-18S-12E**  
**Lyon County**  
**Kansas**



10/8/2020

Maps Provided By:

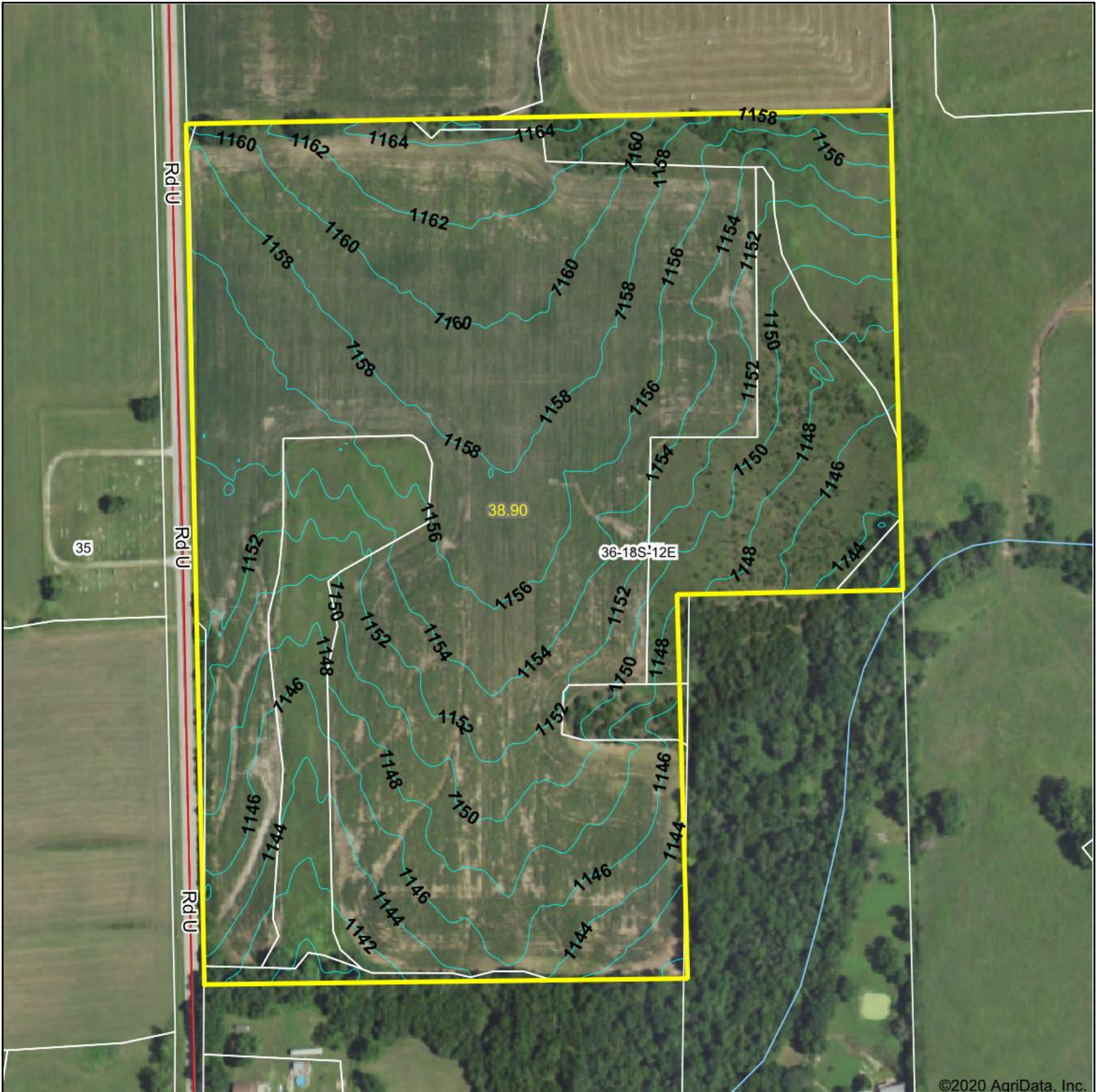


© AgriData, Inc. 2020

www.AgriDataInc.com



# Topography Contours



Source: USGS 3 meter dem

Interval(ft): 2.0

Min: 1,138.5

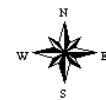
Max: 1,166.8

Range: 28.3

Average: 1,152.7

Standard Deviation: 5.81 ft

0ft 280ft 561ft



10/8/2020

**36-18S-12E**  
**Lyon County**  
**Kansas**

Map Center: 38° 26' 14.11, -96° 2' 25.13

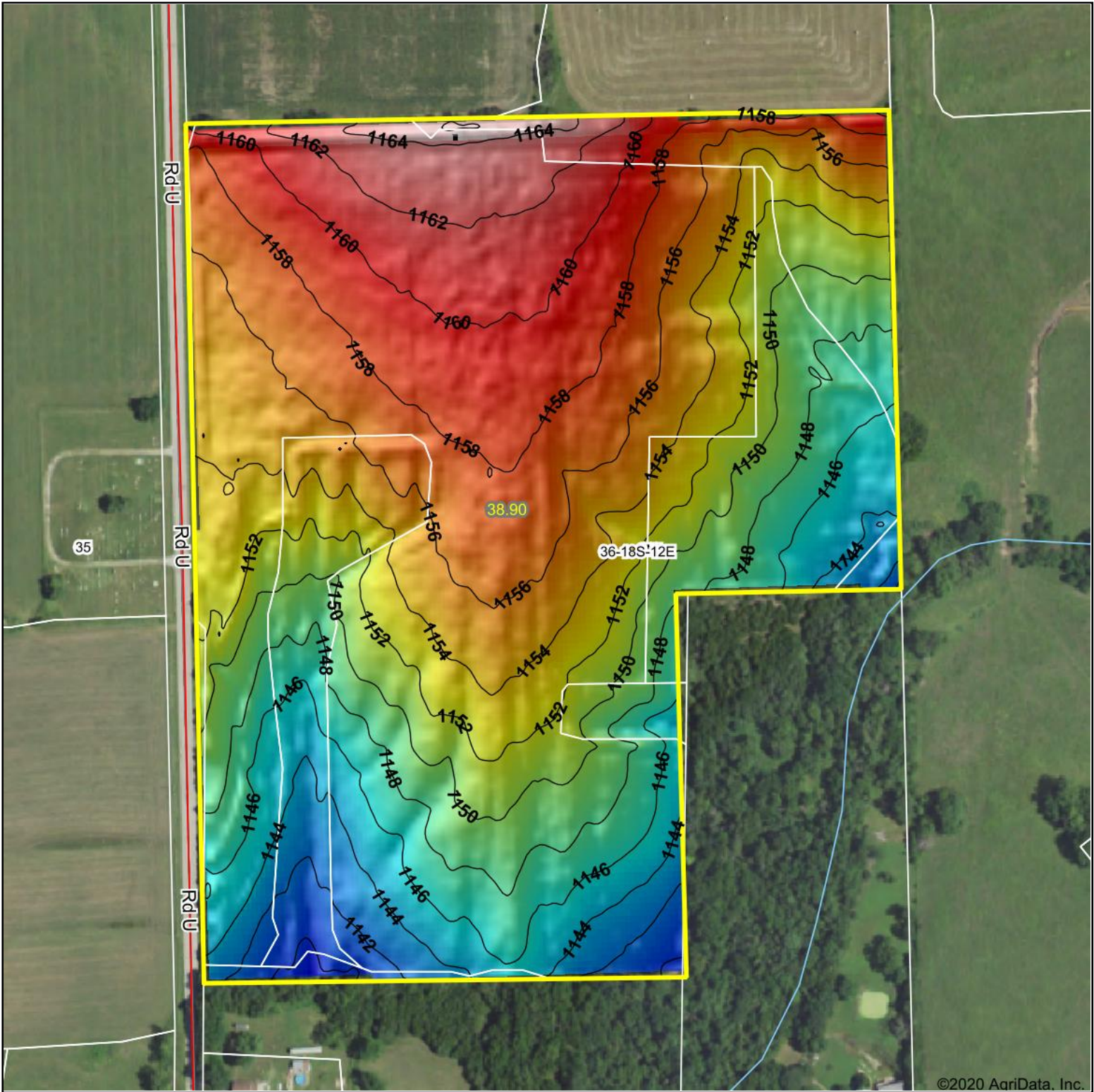
Maps Provided By:



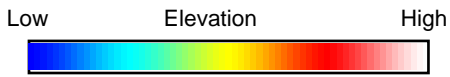
© AgriData, Inc. 2020 www.AgriDataInc.com

Field borders provided by Farm Service Agency as of 5/21/2008.

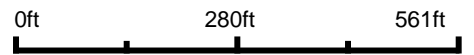




©2020 AgriData, Inc.



Source: USGS 3 meter dem  
 Interval(ft): 2  
 Min: 1,138.5  
 Max: 1,166.8  
 Range: 28.3  
 Average: 1,152.7  
 Standard Deviation: 5.81 ft



**36-18S-12E**  
**Lyon County**  
**Kansas**

10/8/2020

map center: 38° 26' 14.11, -96° 2' 25.13

Maps Provided By:

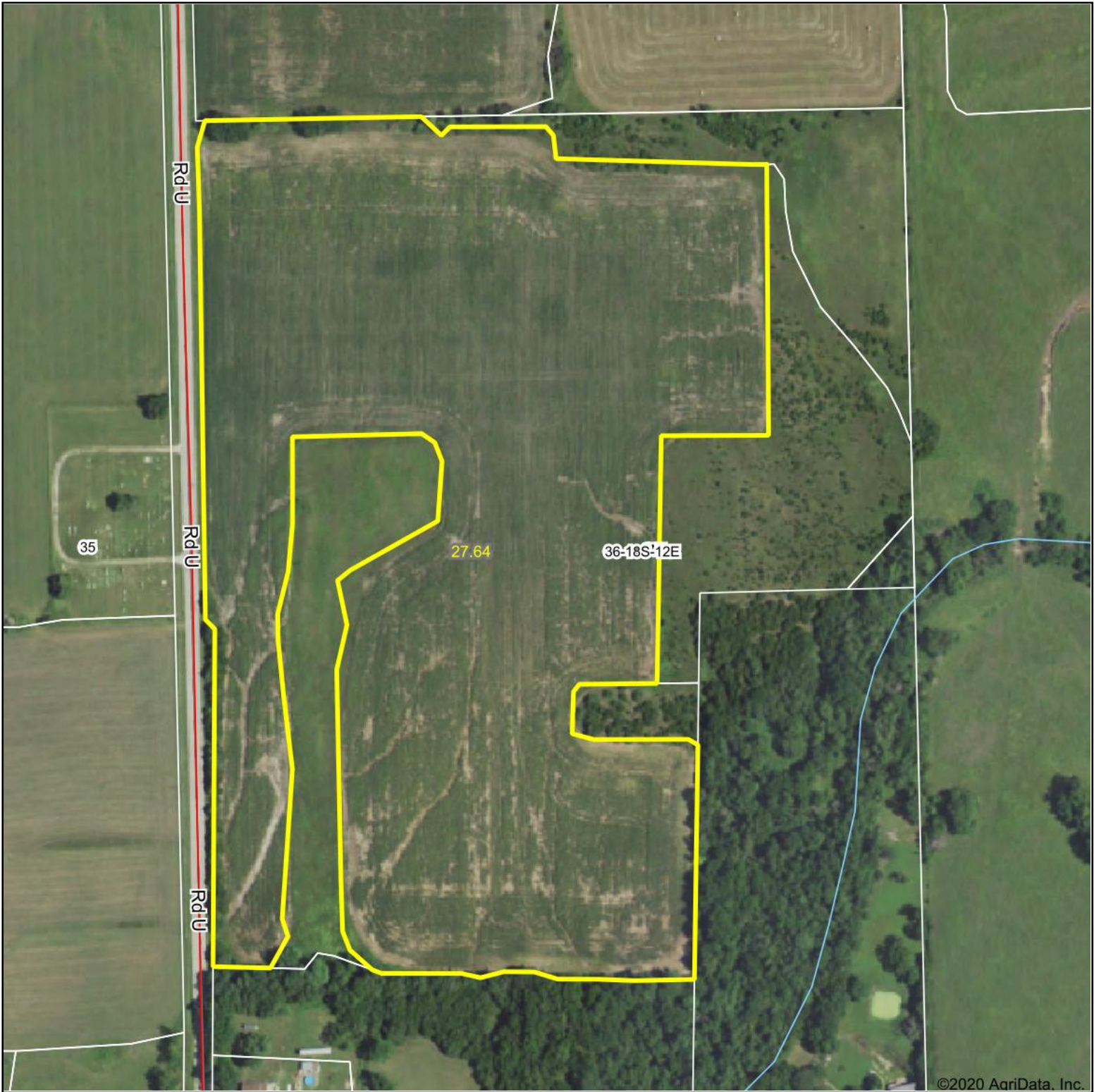


© AgriData, Inc. 2020 www.AgriDataInc.com

Field borders provided by Farm Service Agency as of 5/21/2008.

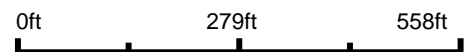


# Aerial Map



©2020 AgriData, Inc.

Map Center: 38° 26' 14.76, -96° 2' 24.78



**36-18S-12E**  
**Lyon County**  
**Kansas**



10/8/2020

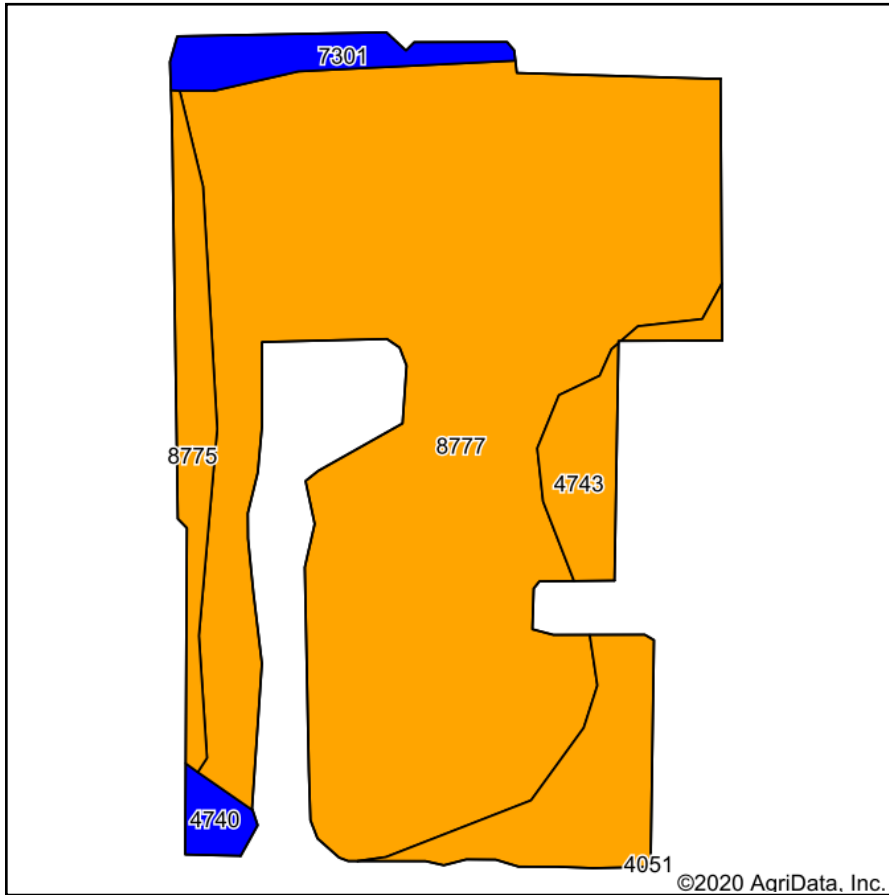
Maps Provided By:



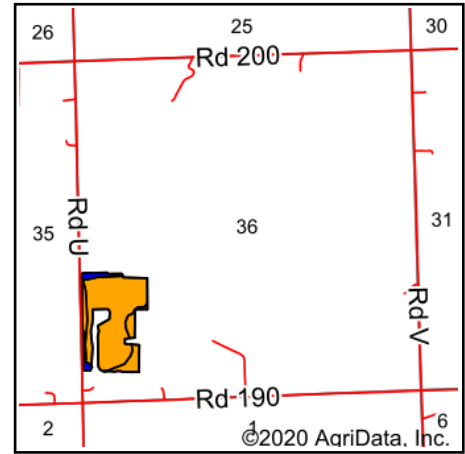
© AgriData, Inc. 2020 www.AgriDataInc.com

Field borders provided by Farm Service Agency as of 5/21/2008.

# Soils Map



Soils data provided by USDA and NRCS.



State: **Kansas**  
 County: **Lyon**  
 Location: **36-18S-12E**  
 Township: **Jackson**  
 Acres: **27.64**  
 Date: **10/8/2020**

Maps Provided By:  
  
 CUSTOMIZED ONLINE MAPPING  
 © AgriData, Inc. 2020 [www.AgriDataInc.com](http://www.AgriDataInc.com)



| Area Symbol: KS111. Soil Area Version: 19 |  |       |                  |                      |                  |              |                |            |               |                   |                     |              |                   |                |
|---|--|-------|------------------|----------------------|------------------|--------------|----------------|------------|---------------|-------------------|---------------------|--------------|-------------------|----------------|
| Code                                      | Soil Description                                       | Acres | Percent of field | Non-Irr Class Legend | Non-Irr Class *c | Irr Class *c | Bromegrass hay | Fescue     | Grain sorghum | Smooth bromegrass | Warm season grasses | Winter wheat | *n NCCPI Soybeans |                |
| 8777                                      | Kenoma silty clay loam, 1 to 3 percent slopes, eroded  | 21.68 | 78.4%            |                      | Ille             |              |                |            |               |                   |                     |              | 50                |                |
| 4743                                      | Labette silty clay loam, 3 to 7 percent slopes, eroded | 3.22  | 11.6%            |                      | Ille             |              | 2              | 3          | 43            | 3                 | 1                   | 24           | 28                |                |
| 8775                                      | Kenoma silt loam, 1 to 3 percent slopes                | 1.42  | 5.1%             |                      | Ille             |              |                |            |               |                   |                     |              | 59                |                |
| 7301                                      | Martin silty clay loam, 1 to 3 percent slopes          | 0.96  | 3.5%             |                      | Ile              | Ile          |                |            |               |                   |                     |              | 49                |                |
| 4740                                      | Labette silty clay loam, 1 to 3 percent slopes         | 0.36  | 1.3%             |                      | Ile              | Ile          |                |            |               |                   |                     |              | 44                |                |
| <b>Weighted Average</b>                   |  |       |                  |                      |                  |              |                | <b>0.2</b> | <b>0.3</b>    | <b>5</b>          | <b>0.3</b>          | <b>0.1</b>   | <b>2.8</b>        | <b>*n 47.8</b> |

\*n: The aggregation method is "Weighted Average using all components"

\*c: Using Capabilities Class Dominant Condition Aggregation Method

Soils data provided by USDA and NRCS.