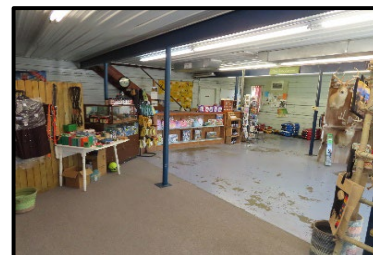


NEW LISTING

COMMERCIAL BUILDING ON HWY-50



501 E 7TH ST, STRONG CITY, CHASE CO, KANSAS

- Commercial Building
- over 4,000 sq ft
- Retail Space
- Shop w/
Overhead door
- 1.4 Acres
- HWY-50
Frontage

Description: What a great location on HWY-50 with lots of highway frontage and 1.4 acres! This commercial property gives you all kinds of opportunities, both inside and out. With 4,440 total sq. ft., you have a lot of options. There is 1,480 sq ft of finished retail space, 1,480 sq ft of shop space with a large overhead door, and an additional 1,480 sq ft of second floor storage that could be finished out. The retail space is completely finished with CH/CA and a bathroom. See how this building can make your dreams become a reality. Also inquire about options to purchase the existing business, Reyer's Country Store who has served the community since 2006.

Listed at **\$109,900**

For more photos,
see our website at:
www.GriffinRealEstateAuction.com

Heidi Maggard
Broker
620-794-8813

Chuck Maggard
Sales/Auctioneer
620-794-8824



Office:
305 Broadway,
Cottonwood Falls, KS 66845
Phone: 620-273-6421
Fax: 620-273-6425
Toll Free: 1-866-273-6421

www.GriffinRealEstateAuction.com
griffinrealestateauction@gmail.com