

# LIVE AUCTION

**2 RINGS  
LARGE  
AUCTION**

# AUCTION

**LARGE  
ITEMS SELL  
AT 1:00pm**

**10:00 AM • SATURDAY, MAY 4, 2024**

**SELLER: Mitch Reed Family**

**AUCTION LOCATION: 730 S Hwy 99, Olpe, Kansas 66868**



**AUCTIONEER'S NOTE:** It's an honor to represent the Mitch Reed Family with the Live Auction of Mitch's entire business estate at his home in Olpe Kansas. Many of you knew Mitch throughout the Ford & Thunderbird industry and the world as a master of his craft in the art of restoring the 55 to 57 Thunderbirds. Mitch was highly recognized in the early Thunderbird community, and respected for his skill, knowledge, honesty, and integrity. This will be a once in a lifetime auction, for over 40 years Mitch had collected parts all over the world! This will be a large, large auction with a HUGE inventory of used and new old stock parts. We will run 2 rings for most of the day. Plus we will offer all of his tools from his private shop and lots of T-Bird and collectible car memorabilia! This is an auction you won't want to miss!



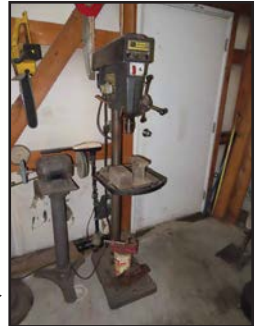
**THE FOLLOWING ITEMS WILL SELL AT 1:00PM (VIA LIVE AND INTERNET BIDDING)**

**ONLINE & LIVE INTERNET BIDDING:** Will be available through HiBid, visit our website for a link to bid:  
**T-BIRDS & ITEMS (SELLING LIVE & ONLINE @ 1pm):** (1) Red 1955 Ford Thunderbird V8 292 Ci, (Car is a Roller). This car is a California car and ready to be put together, the motor, transmission and most all of the parts will sell as a package with this car to make a Beautiful Collectible that will last a lifetime; (2) Blue 1957 Ford Thunderbird (this car is a Roller in Original Condition). This Car is a beautiful find that needs some love to be made really nice, this is also a California Car with Little to NO Rust, This would make a perfect project for any Thunderbird Enthusiast; (3) Yellow T-Bird 1955-1957 Hard Top; (4) White 1956 T-Bird Hard Top; (5) 1962-1963 Kelsey Hays Wire Spoke Wheels W/ 2 Spoke Spinners Original; (6) 1955-1957 T-Bird Hood; (7) AMI Model C Jukebox Record Changer w/ key, lights up and turntable turns;



**THE FOLLOWING ITEMS WILL SELL AT 10:00AM (VIA LIVE BIDDING ONLY)**

**CAR PARTS (Temperature Controlled Environment):** Most of the Thunderbird Parts are going to Fit 1955-1957 Thunderbird; Power Brake Booster; Fender Skirts 55-57, x12; 55-56' Front Bumper x3, Rear Bumper; 55'-57' Hood Grill x13; Front Chrome Pieces x4 Pair; 50s Ford Fender Skirts; Chrome Pieces (Garnish Molding, Door Molding, Garnish Rails, Fender Skirt Molding, Side Grill Molding, Hard Top Molding, Inside Windshield, Upper Glass Stainless, Ext & Int Verticals,); 63'-64' T-Bird Spinners & Caps x25; Hub Cap Inserts (Black, Red, & Green); 55' T-Bird Hubcaps; Ford Hubcaps; 63' California License Plate; T-Bird Door Glass; Backrest Board; 55' Auto Trans; Yoke Assembly; 55'-57' Weather Stripping; Cam Shafts x6; 56'-57' Horn Rings x5; 56-57 Steering Wheels x8; NIB Compressor, Alternator,; Mark IV Air Conditioner; 55'-56' NOS Body Assembly; Thunderbird Hood Ornaments x3; Thunderbird Trim Ornament x4 NOS; Many Emblems & Ornaments (too numerous to list); 57' Bumper **MORE ON THE BACK SIDE** →



**CHUCK MAGGARD**  
Sales/Auctioneer  
Cell: 620-794-8824

**ANDY PHIPPS**  
Auctioneer  
Cell: 620-794-1673



Office:  
305 Broadway,  
Cottonwood Falls, KS 66845  
Phone: 620-273-6421  
Fax: 620-273-6425

griffinrealestateauction@gmail.com





Chrome Piece; NOS Ford Steering Wheel x2; 55'-57' Chrome Door Handles x20; Original Windshields x4; 56'-57' Column Steering & Parts; Show Chrome Steering Column Tube; 55'-57' Hub Caps Several Sets; Exhaust Manifolds x10; Hood & Trunk Locks Ass.; Visors x8; Speedometers x10; 50s Ford Bumper Brackets; Trunk Hinges; 55'-56' Aluminum Radiator x2 NIB; NOS Lock Sets; 55'-57' Head Lamp Doors x10; 55'-56' T-bird Carb Parts; Soft Top; 55'-56' Tack Distributors; Heater Boxes NIB; Generator (Reman); Hub Tire Rings; Set of Wire Spoke Wheels (Basement); 3 Spoke Hub Caps Red Insert x2 Sets & Black Insert; 3 Bolt Flywheel; Torque Converter (Reman); 56'-57' Glove Box Doors x12; Step Plates x12; Factory Bolts (Too Many To describe); Hub Caps 4 New; "Thunderbird" Chrome; Thunderbird Emblem x2; Wing Windows x4; NOS Tail lights; Dashboard Bezels; Radiator Caps x12; Vac Advances; 55'-57' Clocks & Tachs; ACME AC Unit (NIB);

**CAR PARTS (IN Warehouse):** 1957 Transmission x3; BF Goodrich White Wall Tires 14"; New Radiator x2; 57' Dist Caps; Fuel Pumps; Jack Hooks and Handles; 1954-56 Holley Carb 4 Barrell; Hay Stack Carbs (Tons); 1957-Newer Holley Carbs; Drive Shafts x10; Thunderbird Bumpers x8; Ford Motor Heads 1955-57' T-Bird Water Cooled; Ford 312 big Block x3 56'-57'; Ford 292 w/ 4 Barrell Carb; Ford 312 CI V8 Motor; 1955-1957 Y Block T-Bird & Mercury Intake Manifolds; Timing Covers for Ford 292 or 312 Motors; Front Steering Linkage for 55'-57'; 55'-57' Flywheel Starters; Stick Shifter for 55'-57' T-Bird & Shifter Parts; Oil & Trans Dipsticks; Front Engine Mounts T-Bird x12; NOS Mid 50s Shock Absorbers; Drive Shaft 55'-57' T-Bird; Head Light Bezels 55'-57' x50+; 55' Back Seat; 57' Front Seat; 15"x5" NOS Rims x20; 55'-56' Pass Car Bumper; Y-Block Engine Oil Pans; 1957 Right Hand T-Bird Doors x2; Continental Tire Ring Kits 56' x6, Radiator Fans x25; Quarter Panels x10; Chrome Inside Handles; Striker Door Plates; Hub Caps x50; Hood Latches; Fuel Pumps; Side Windows; Radiator Caps; Front Grill; Bench Seat; CHROME (1955 Tudor Side Trim, ); Thunderbird Special Valve Covers; Factory Ford AC; 55-56 Ignition Points; Head Light Chrome Rings; Hub Caps NIB; Wipers; Brake Adjustment; Gaskets; Glove Box Doors; 55-56 Instrument Clusters x40; Side Vent Doors; 57' Distributor Caps; 55'-56' Distributor Caps;

**DIE CAST & MODEL CARS:** Many Ford, Thunderbird, and Other Type Model Cars (1st, 2nd, and 3rd Gen) Old; Many Die Cast Cars, most 1:24 Scale; New Models in the Original Boxes (See Pictures);

**ANTIQUES & COLLECTIBLES:** Vintage Frigidaire Custom Imperial Range; Elvis Collectibles; 55' T-Bird Clock; T-Bird & Racing Trophies; Avon T-Bird Bottles; T-Bird Mugs; T-Bird



Zippo Lighters; 55' T-Bird Watch; Ford Money Clip; Valvoline Radio x2; Ford Oil Can; BF Goodrich 100th Ann. Ash Tray; T-Bird Pins (over 100); Garnett Pin; Mustang Emblem NOS; Ford Pocket Knife; Ford "Official" Jacket;

**TOOLS:** MAC Tools Rolling Tool Chest 16 Drawer; SNAP-ON (Pliers, Deep Sockets x4 Sets, Screw Drivers, Swivel Heads Metric & Standard x4, 3/8" Drive Sockets; Socket Ext., Flare Nut Wrenches, Offset Wrenches, Ratcheting Wrenches, Offset Driver Kit, Bushing Kit, Double Flaring Tool Kit, Cooling System Tester, Air Hammer ); Blue Point Extractor Kit; Crescents Wrenches; Pliers (Needle Nose, Blunt, Adjustable); Mac (Impact Sockets 1/2", Socket Tray, Breaker Bar, Sockets, Punch Set, Hex Key Set, Transmission/ Oil Pressure Tester, ); Craftsman 1/2" Socket Sets x15 & Deep Socket Sets; Craftsman Wrench Set x12 Metric and Std.; Econoline Sand Blaster (like New); Other Wrench Sets (SK, Husky, Challenger, & more); Titanium Drill Bit Set; Bench Vise; Napa Mig Welder- 200 AMP Model 83-369 w/ Bottle & Cart; Oil Basin; Snap On Tool Box Topper; Air Tools; Proto Gear Puller; Mac Tools 20 Drawer Rolling Chest (Missing One Drawer); Rem Line Tool Box; Power Built 3.5 Ton Floor Jack; Cutting Torch with Cart & Victor Torch; Safety Kleen Parts Washer; Atlas Mandrel Press 1 1/2; Duracraft Bench Grinder; Craftsman Drill Press; Ingersoll Rand 1" Air Impact; Torquemeter; DeWalt 1/2" Electric Impact; Electrical (Pliers, Tips, Ends, Heat Shrink); Gear Puller Set; Milwaukee Sawzall; Kawasaki Buffer; Heavy Duty Jack Stands x5; CO2 Tank; Fastener and Bolt Cabinets x10 (electrical, machine washers, bolts, nuts, bushings, keys); Engine Stand; Air Bubble; Car Frame Jack; Benwil Industries 2-Post Car Lift 7,000 lb;

**MOWERS & MISC:** Grasshopper 721D Zero Turn Mower 72" Diesel (Needs Work); Grasshopper 722 D Zero Turn Mower 72" (Needs Work); 25 Ton MTD Log Splitter; National BD&MPCO Air Compressor; Live Traps; John Deere Tractor Pull Manure Spreader; O Reilly SAE 30 Motor Oil (Case); Mag 1 Trans Fluid; DuPont Refrigerant; Freon and Refrigerant x10 Bottles; Refrigerant 12 x4 Cases;

**TERMS:** Cash, approved check, or credit card with 4% processing fee on all credit card transactions. All statements made day of auction take precedence over advertisements. Owners and auction company not responsible for accidents or theft. Nothing removed until settlement has been made. Additional Terms for the online bidding portion. Concessions will be available.



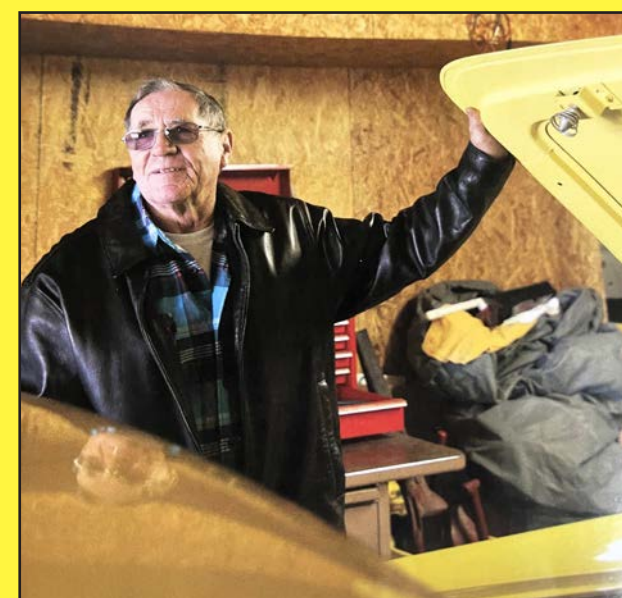
305 BROADWAY, COTTONWOOD FALLS, KS 66845  
Telephone: 620-273-6421  
www.GriffinRealEstateAuction.com

**LIVE AUCTION**  
**The Mitch Reed Estate**  
**Saturday, 05/04/2024 at 10am**  
**730 S Hwy-99, Olpe, Kansas 66865**



For more information  
& photos, visit our website:

WWW.GRIFFINREALESTATEAUCTION.COM



**LIVE AUCTION - MITCH REED ESTATE**

**Saturday, 5/4/2024 at 10am**

at 730 S HWY-99, Olpe, KS 66865

**SELLER: The Mitch Reed Family**

**ABOUT MITCH.....**Many of you knew Mitch throughout the Thunderbird industry and the world as a master of his craft in the art of restoring the 55 to 57 Thunderbirds. Mitch was highly recognized in the early Thunderbird community, and respected for his skill, knowledge, honesty, and integrity. For years he owned Mitch's T-Birds in Downey California and continued to give tirelessly of his time, energy, and knowledge through the promotion and education of the love of classic cars. He could be found behind-the-scenes working at car shows and as a member of many car clubs such as CTCI (Classic Thunderbird Club International), some for more than 40 years. And many of you may remember him as the long-time former tech editor for CTCI.

**WWW.GRIFFINREALESTATEAUCTION.COM**

**CHUCK MAGGARD**  
Auctioneer  
Cell: 620-794-8824  
**ANDY PHIPPS**  
Auctioneer  
Cell: 620-794-1673



Office:  
305 Broadway,  
Cottonwood Falls, KS 66845  
Phone: 620-273-6421  
Fax: 620-273-6425  
griffinrealestateauction@gmail.com

