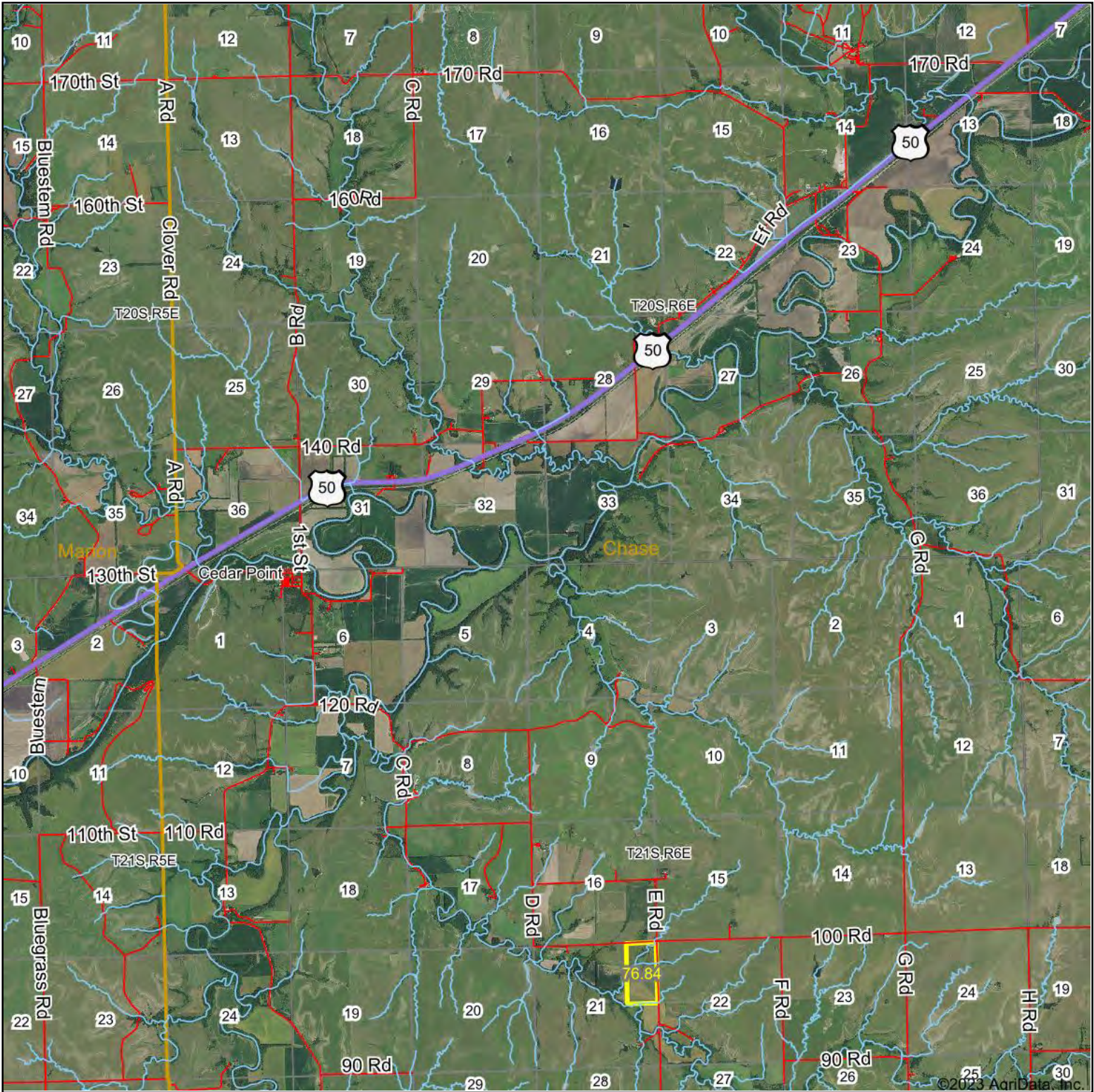


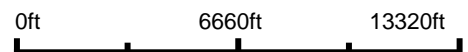
Aerial Map



©2023 AgriData, Inc.



Map Center: 38° 15' 47.86, -96° 46' 57.67



32-20S-6E
Chase County
Kansas



1/24/2023

Maps Provided By:
 **surety**
CUSTOMIZED ONLINE MAPPING
© AgriData, Inc. 2021 www.AgriDataInc.com

Field borders provided by Farm Service Agency as of 5/21/2008.

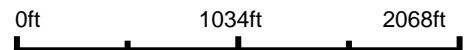
Aerial Map



©2023 AgriData, Inc.



Map Center: 38° 12' 33.49, -96° 46' 39.38



21-21S-6E
Chase County
Kansas



1/24/2023

Maps Provided By:
 **surety**
CUSTOMIZED ONLINE MAPPING
© AgriData, Inc. 2021 www.AgriDataInc.com

Field borders provided by Farm Service Agency as of 5/21/2008.

Aerial Map



Map Center: 38° 12' 46.34, -96° 46' 11.99



21-21S-6E
Chase County
Kansas

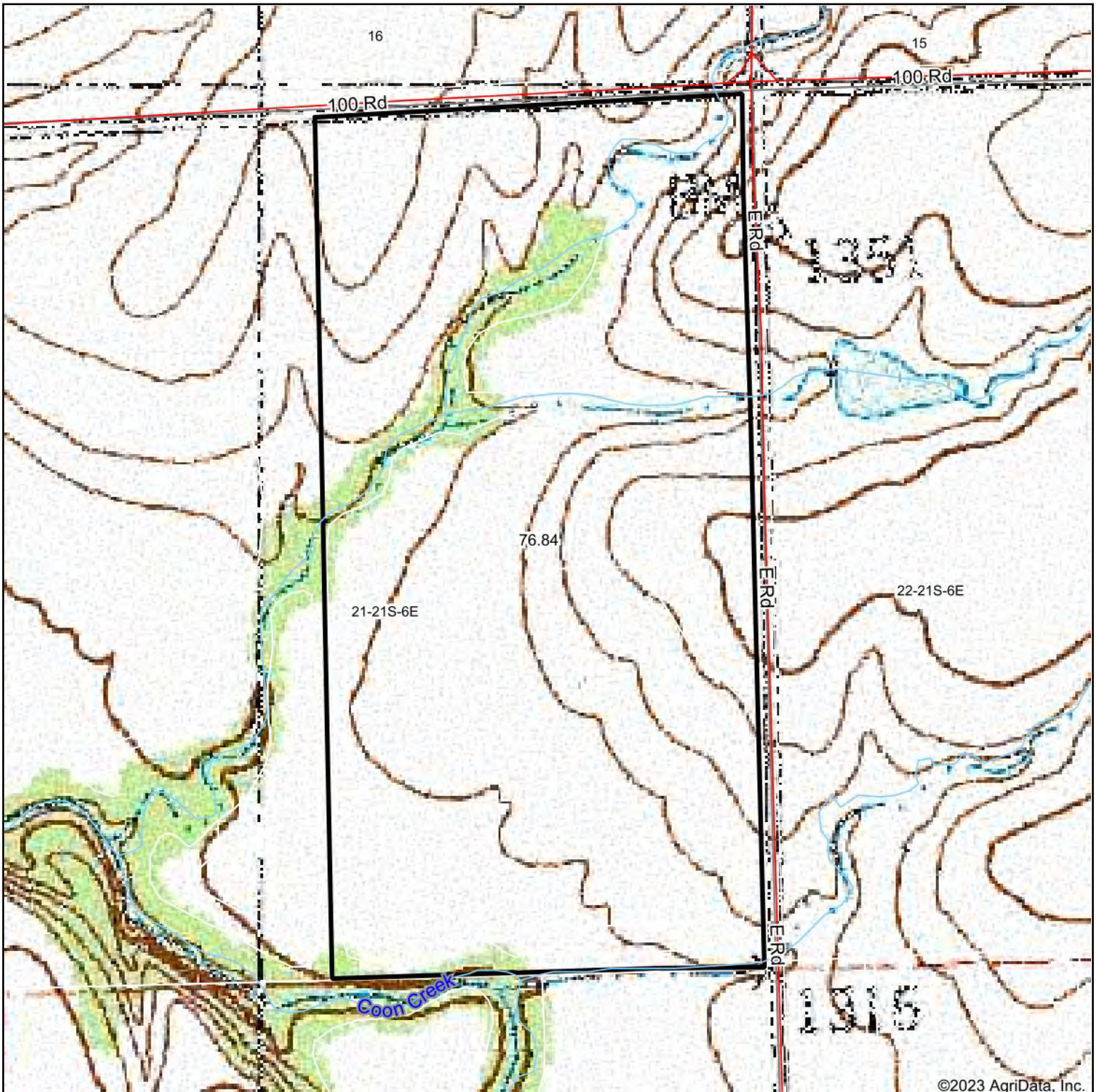


1/24/2023

Maps Provided By:
 **surety**
CUSTOMIZED ONLINE MAPPING
© AgriData, Inc. 2021 www.AgriDataInc.com

Field borders provided by Farm Service Agency as of 5/21/2008.

Topography Map



©2023 AgriData, Inc.



map center: 38° 12' 46.34, -96° 46' 11.99



21-21S-6E
Chase County
Kansas

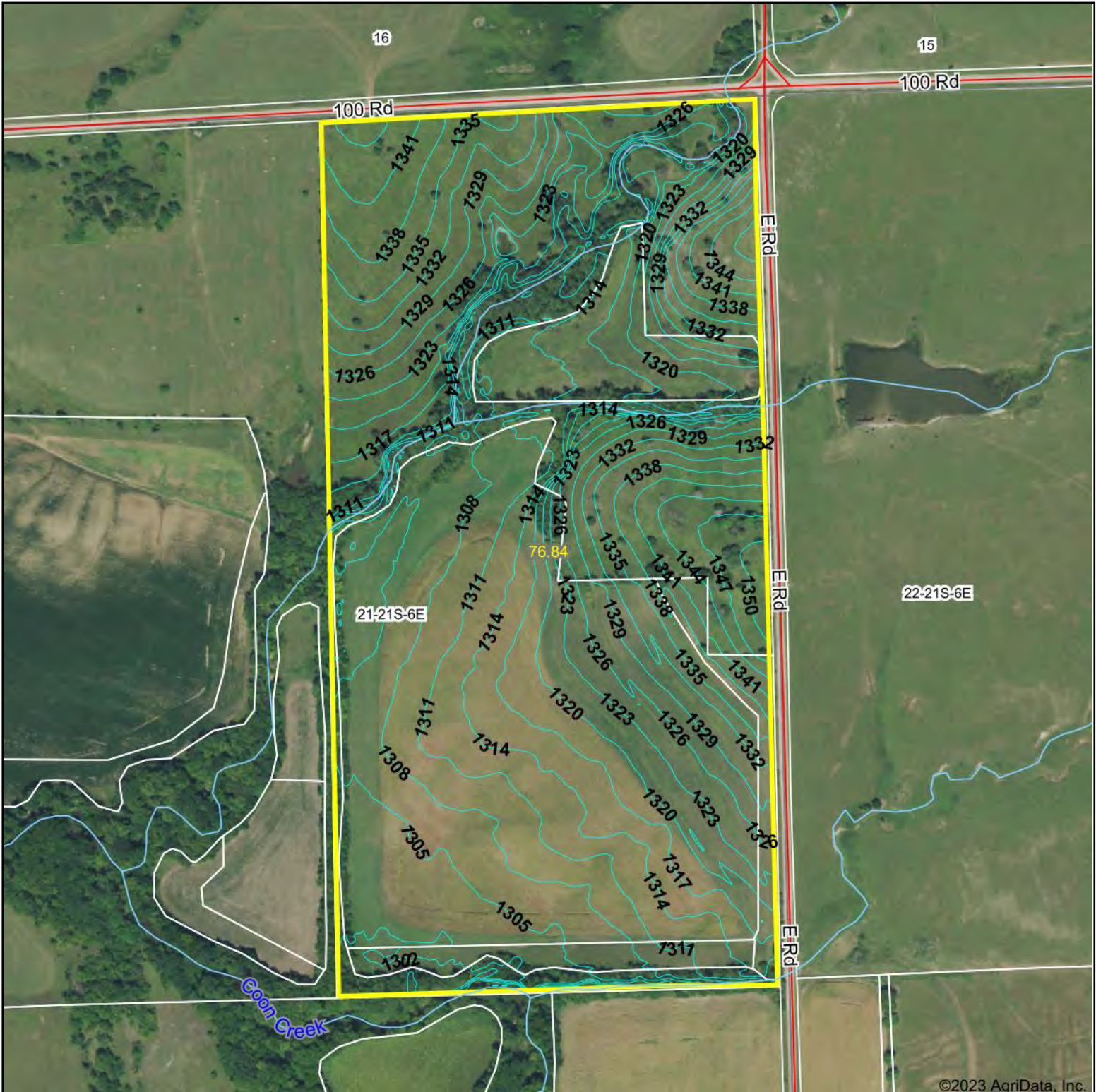


Maps Provided By:

CUSTOMIZED ONLINE MAPPING
© AgriData, Inc. 2021 www.AgriDataInc.com

1/24/2023

Topography Contours



©2023 AgriData, Inc.



Source: USGS 3 meter dem

Interval(ft): 3.0

Min: 1,290.1

Max: 1,352.3

Range: 62.2

Average: 1,320.3

Standard Deviation: 12.47 ft

0ft 460ft 921ft



1/24/2023

21-21S-6E
Chase County
Kansas

Map Center: 38° 12' 46.34, -96° 46' 11.99

Maps Provided By:

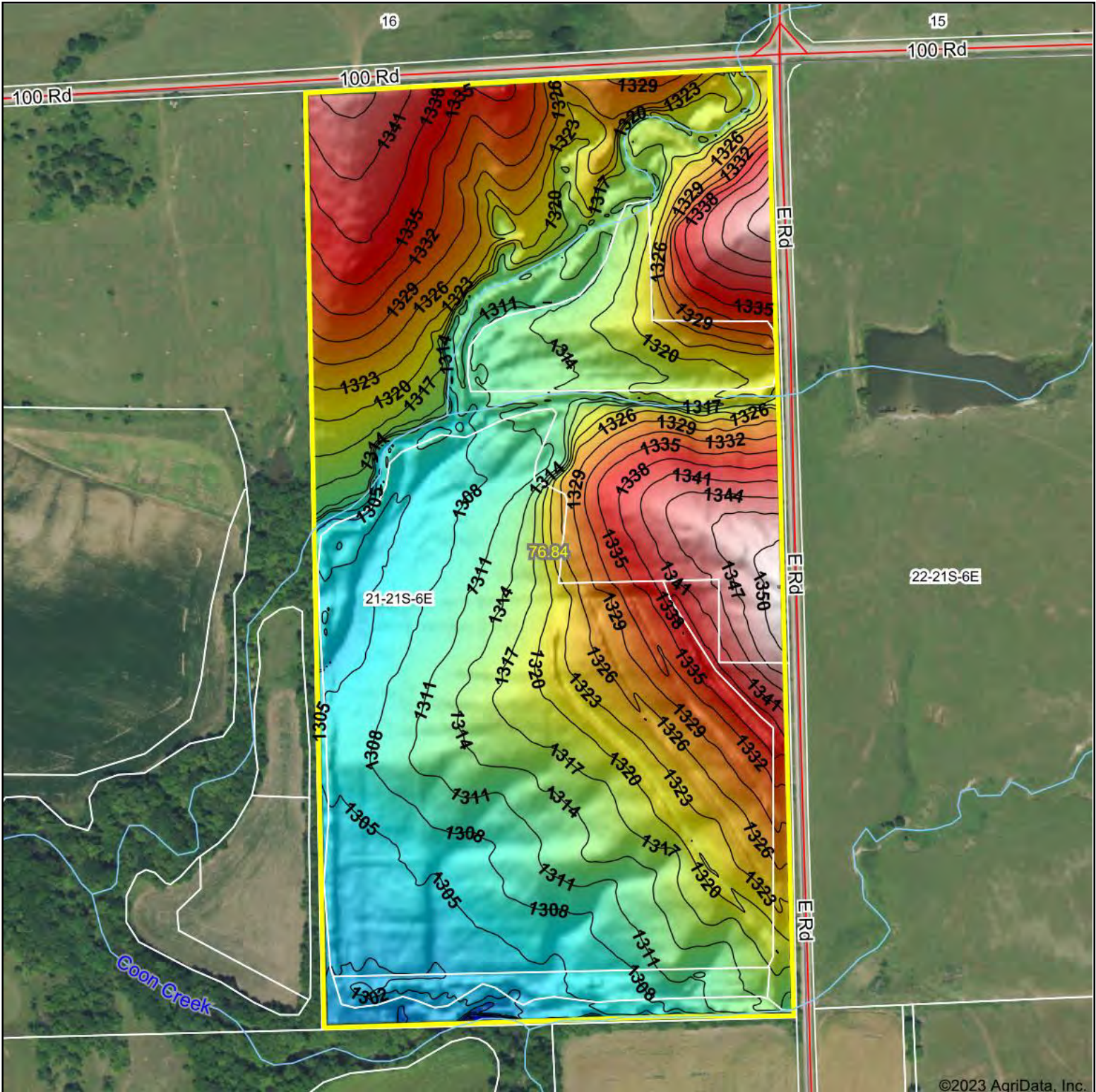


© AgriData, Inc. 2021

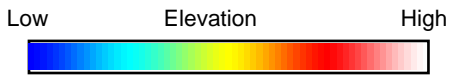
www.AgriDataInc.com

Field borders provided by Farm Service Agency as of 5/21/2008.

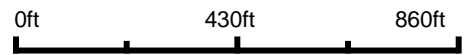
Topography Hillshade



©2023 AgriData, Inc.



Source: USGS 3 meter dem



Interval(ft): 3

Min: 1,290.1

Max: 1,352.3

Range: 62.2

Average: 1,320.3

Standard Deviation: 12.47 ft



1/24/2023

21-21S-6E
Chase County
Kansas

map center: 38° 12' 46.34, -96° 46' 11.99



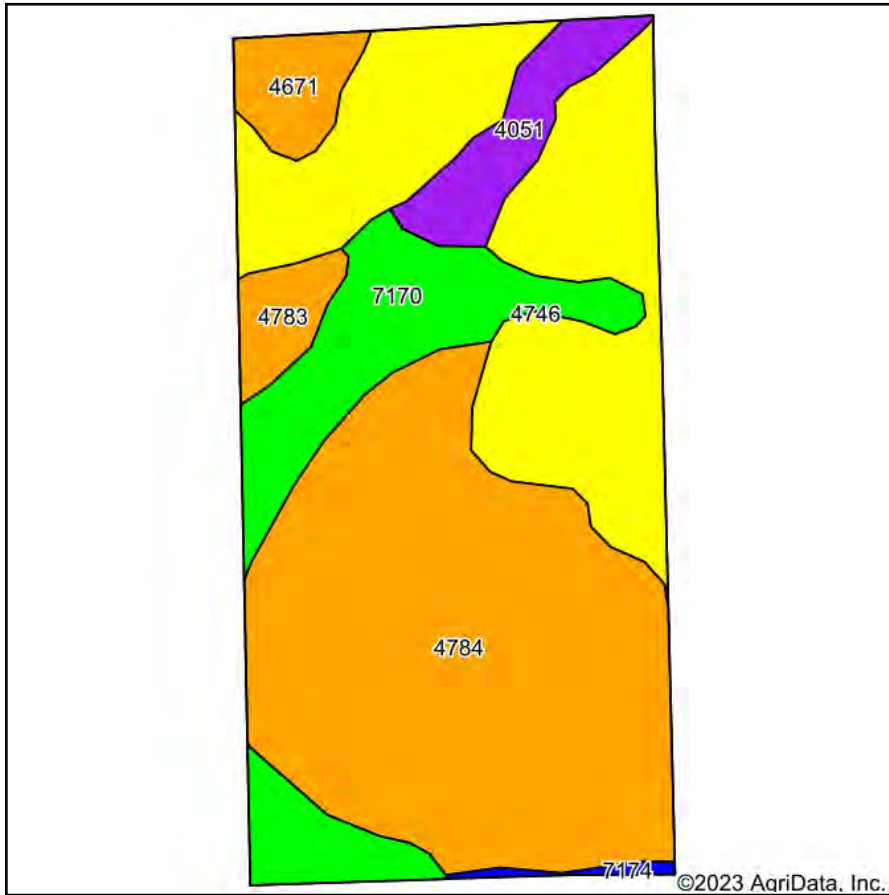
Maps Provided By:



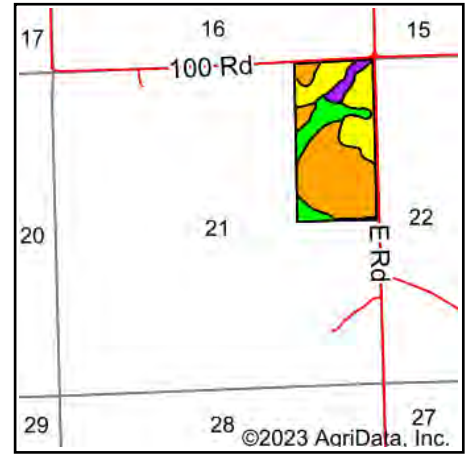
© AgriData, Inc. 2021 www.AgriDataInc.com

Field borders provided by Farm Service Agency as of 5/21/2008.

Soils Map



Soils data provided by USDA and NRCS.



State: **Kansas**
 County: **Chase**
 Location: **21-21S-6E**
 Township: **Cedar**
 Acres: **76.84**
 Date: **1/24/2023**



Maps Provided By:



Area Symbol: KS017, Soil Area Version: 18

Code	Soil Description	Acres	Percent of field	Non-Irr Class Legend	Non-Irr Class *c	Irr Class *c	*n NCCPI Soybeans
4784	Tully silty clay loam, 3 to 7 percent slopes, eroded	34.54	45.0%		IIle	IIIe	52
4746	Labette-Sogn silty clay loam, 0 to 8 percent slopes	22.08	28.7%		IVe	IIIe	32
7170	Reading silt loam, rarely flooded	11.32	14.7%		Iw	Iw	76
4051	Ivan silt loam, channeled	3.83	5.0%		Vw		52
4671	Irwin silty clay loam, 1 to 3 percent slopes	2.60	3.4%		IIIs	IIIs	55
4783	Tully silty clay loam, 3 to 7 percent slopes	2.09	2.7%		IIle	IIle	60
7174	Reading silt loam, 1 to 3 percent slopes	0.38	0.5%		Ile	Ile	76
Weighted Average					3.09	*-	*n 50.2

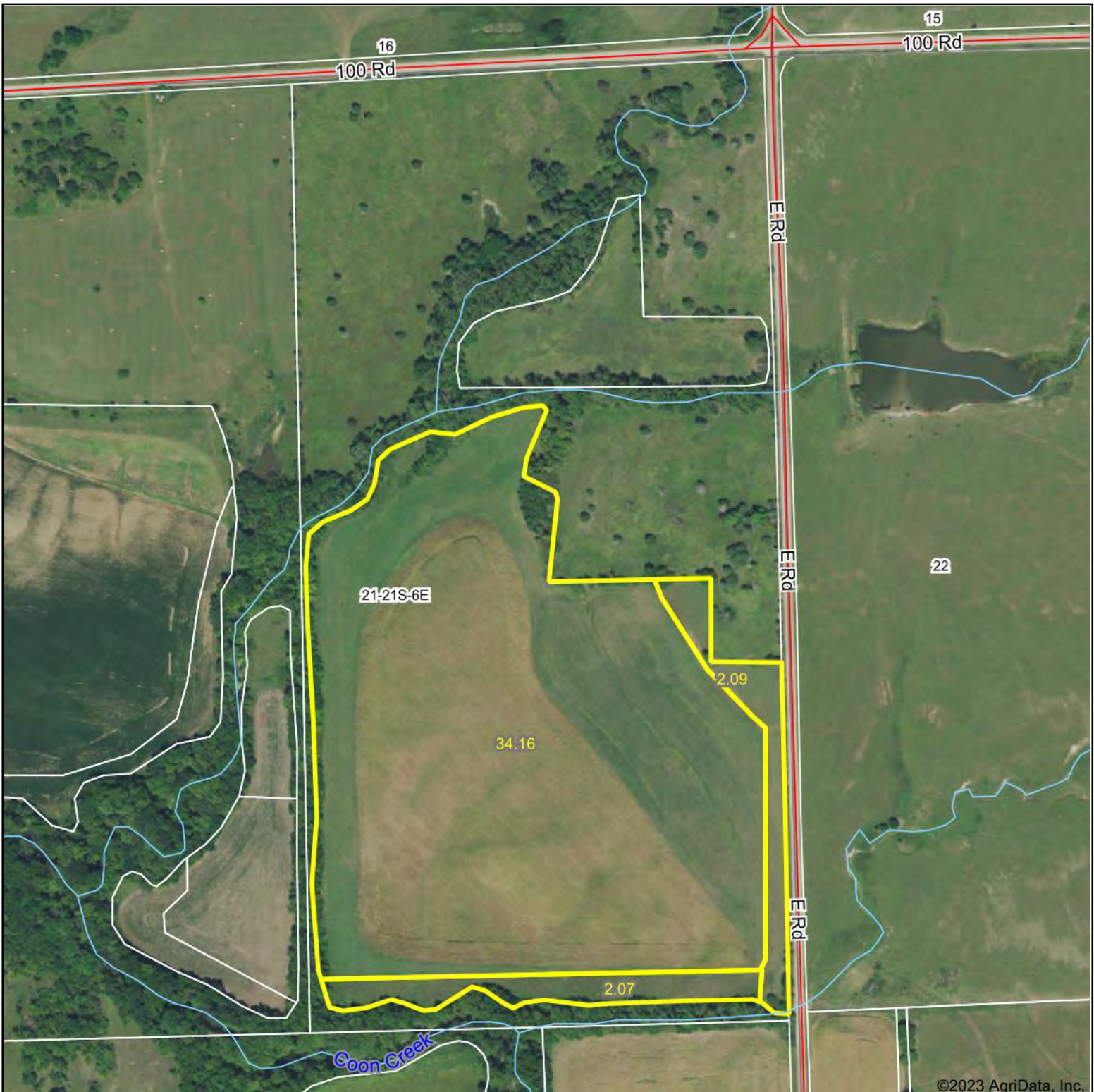
*n: The aggregation method is "Weighted Average using all components"

*c: Using Capabilities Class Dominant Condition Aggregation Method

*- Irr Class weighted average cannot be calculated on the current soils data due to missing data.

Soils data provided by USDA and NRCS.

Aerial Map



Map Center: 38° 12' 46.63, -96° 46' 12.03



21-21S-6E
Chase County
Kansas

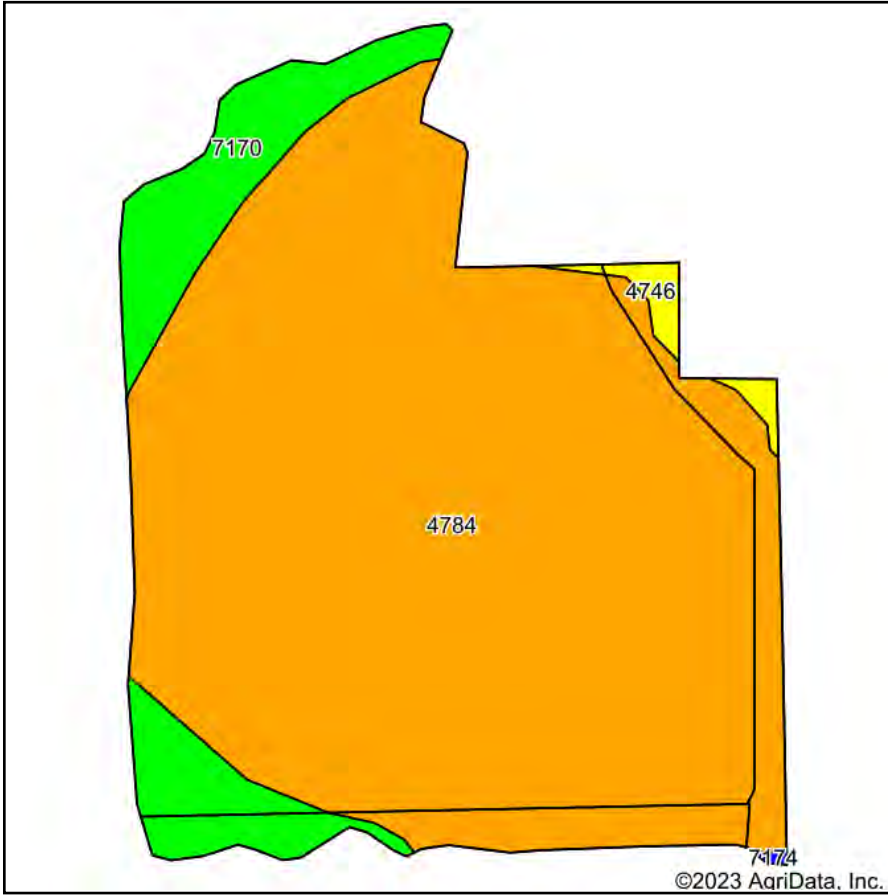


1/24/2023

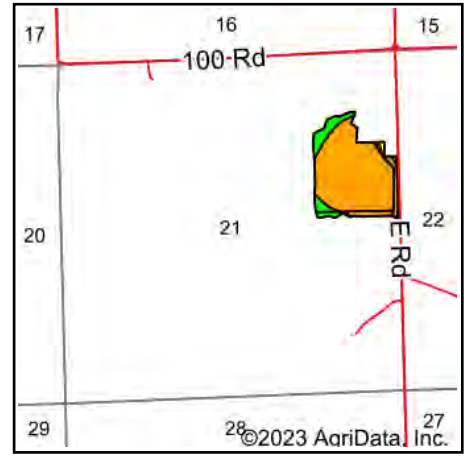
Maps Provided By:
 **surety**
CUSTOMIZED ONLINE MAPPING
© AgriData, Inc. 2021 www.AgriDataInc.com

Field borders provided by Farm Service Agency as of 5/21/2008.

Soils Map



Soils data provided by USDA and NRCS.



State: **Kansas**
 County: **Chase**
 Location: **21-21S-6E**
 Township: **Cedar**
 Acres: **38.32**
 Date: **1/24/2023**



Maps Provided By:



Area Symbol: KS017, Soil Area Version: 18

Code	Soil Description	Acres	Percent of field	Non-Irr Class Legend	Non-Irr Class *c	Irr Class *c	*n NCCPI Soybeans
4784	Tully silty clay loam, 3 to 7 percent slopes, eroded	33.42	87.2%		IIIe	IIIe	52
7170	Reading silt loam, rarely flooded	4.41	11.5%		Iw	Iw	76
4746	Labette-Sogn silty clay loam, 0 to 8 percent slopes	0.49	1.3%		IVe	IIIe	32
Weighted Average					2.78	2.77	*n 54.5

*n: The aggregation method is "Weighted Average using all components"

*c: Using Capabilities Class Dominant Condition Aggregation Method

Soils data provided by USDA and NRCS.

Aerial Map



©2023 AgriData, Inc.



Map Center: 38° 12' 47.02, -96° 46' 12.03



21-21S-6E
Chase County
Kansas



1/24/2023

Maps Provided By:
 **surety**[®]
CUSTOMIZED ONLINE MAPPING
© AgriData, Inc. 2021 www.AgriDataInc.com

Field borders provided by Farm Service Agency as of 5/21/2008.