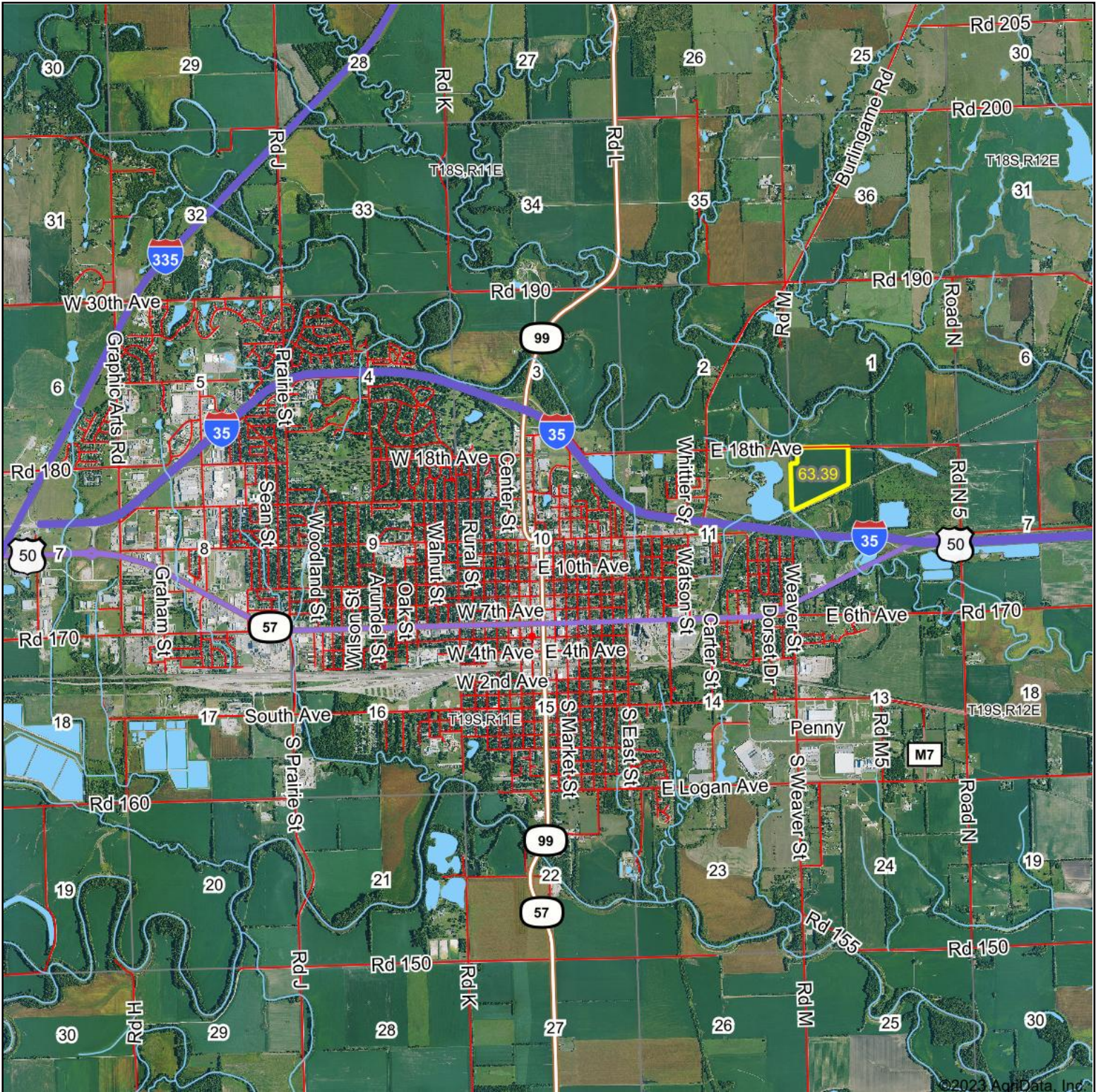
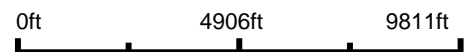


# Aerial Map



Boundary Center: 38° 25' 0.43, -96° 8' 57.35



12-19S-11E  
Lyon County  
Kansas



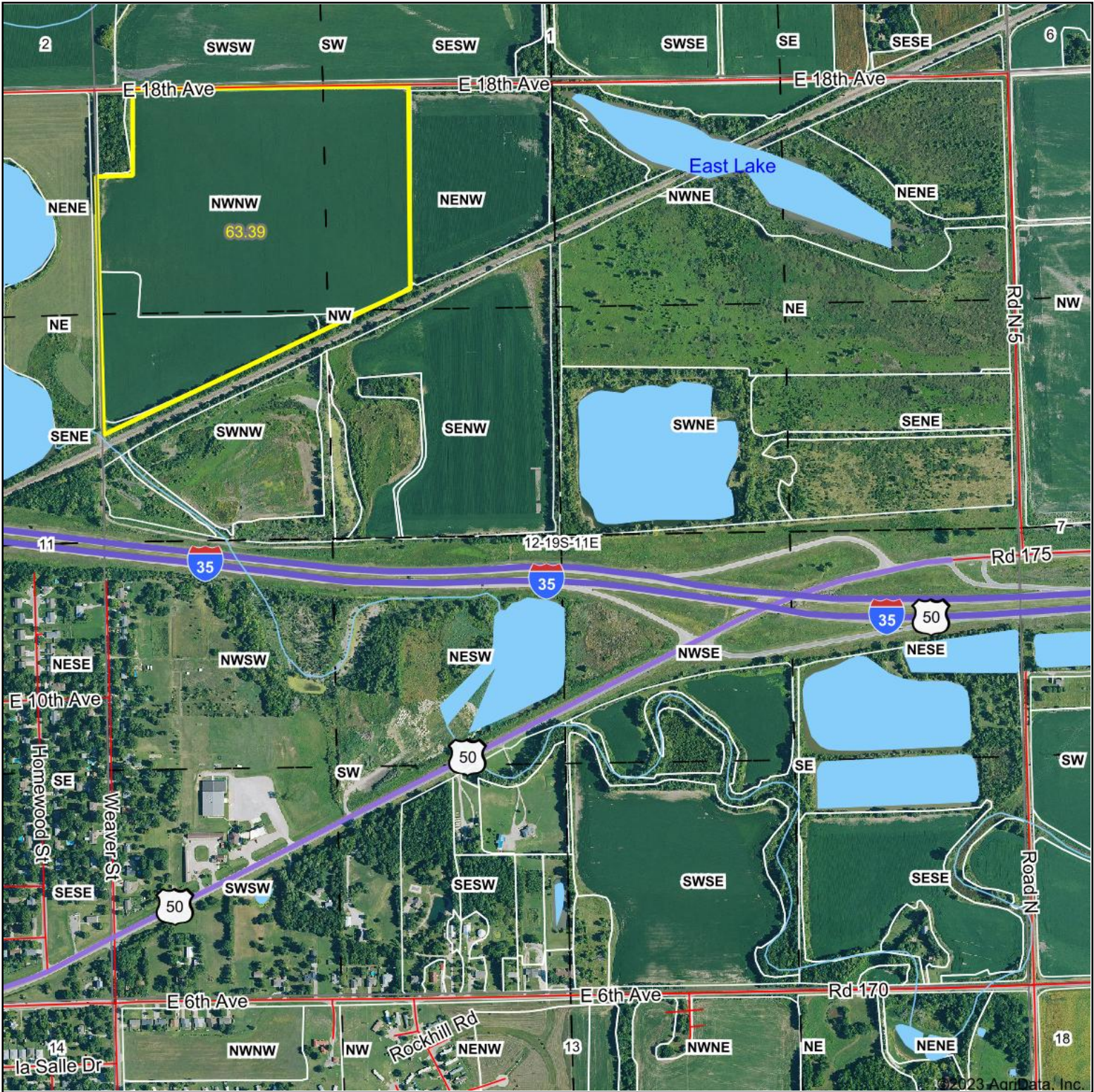
Maps Provided By:  
 **surety**  
CUSTOMIZED ONLINE MAPPING  
© AgriData, Inc. 2023 www.AgriDataInc.com

12/26/2023

Field borders provided by Farm Service Agency as of 5/21/2008.



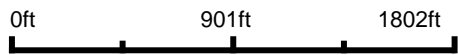
# Aerial Map



©2023 AgriData, Inc.



Boundary Center: 38° 25' 0.43, -96° 8' 57.35



12-19S-11E  
Lyon County  
Kansas



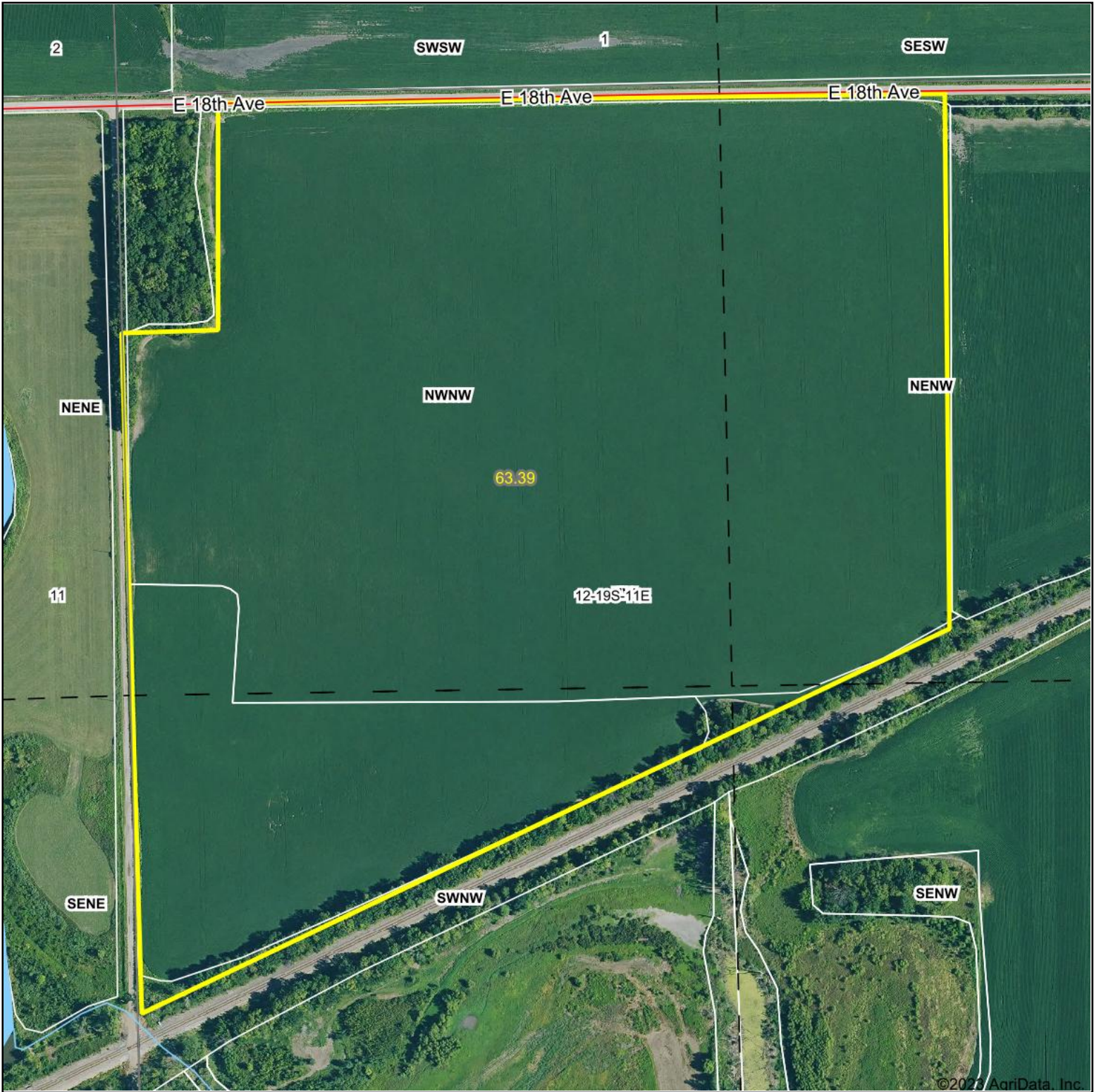
Maps Provided By:  
 **surety**  
CUSTOMIZED ONLINE MAPPING  
© AgriData, Inc. 2023 www.AgriDataInc.com

12/26/2023

Field borders provided by Farm Service Agency as of 5/21/2008.



# Aerial Map



Boundary Center: 38° 25' 0.43, -96° 8' 57.35



12-19S-11E  
Lyon County  
Kansas



Maps Provided By:  
 **surety**  
CUSTOMIZED ONLINE MAPPING  
© AgriData, Inc. 2023 www.AgriDataInc.com

12/26/2023







# Topography Contours

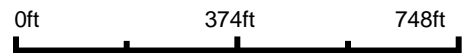


©2023 AgriData, Inc.



Field borders provided by Farm Service Agency as of 5/21/2008.

Source: USGS 3 meter dem  
Interval(ft): 3.0  
Min: 1,099.8  
Max: 1,105.5  
Range: 5.7  
Average: 1,102.2  
Standard Deviation: 0.89 ft



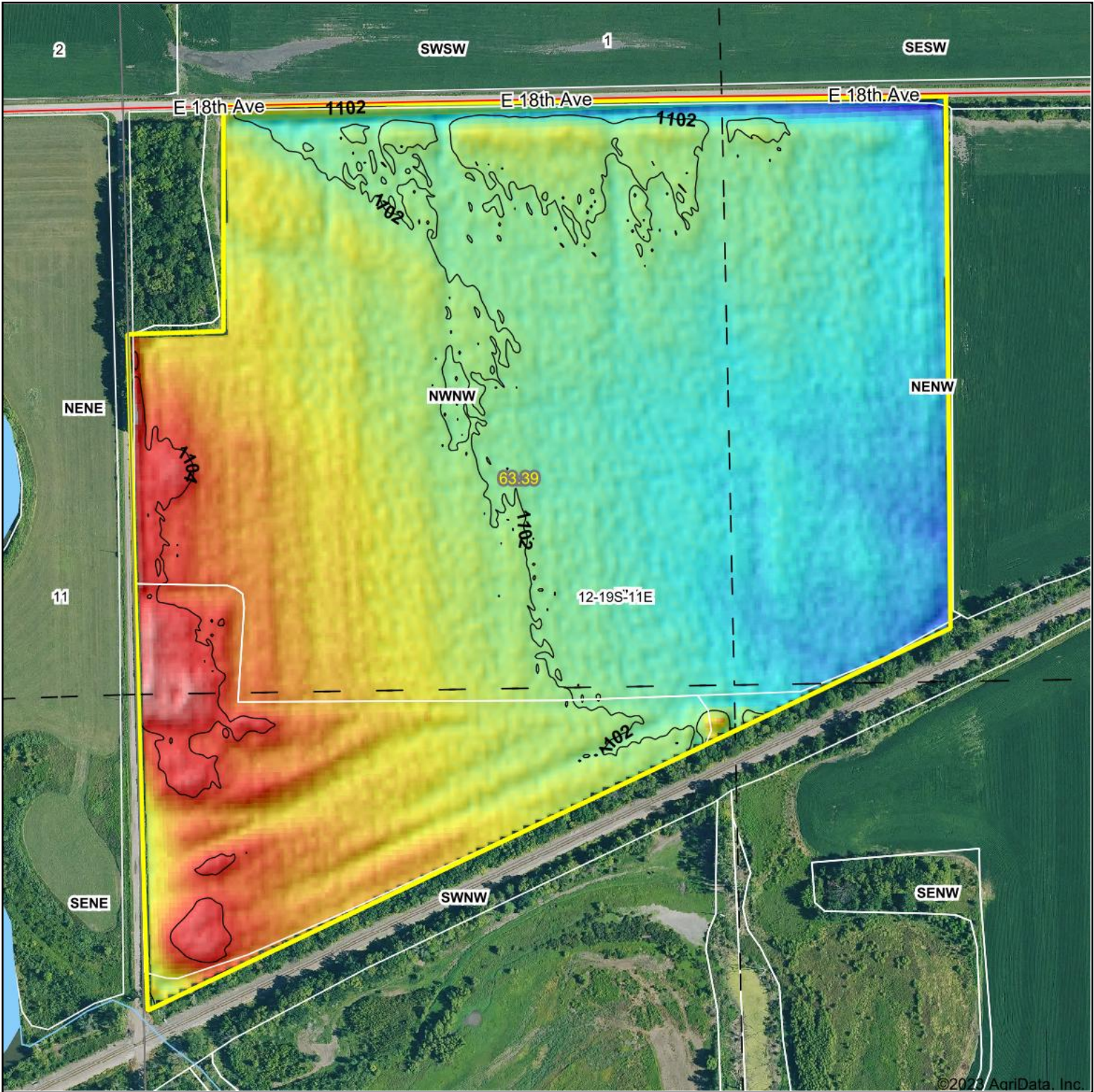
12/26/2023

**12-19S-11E**  
**Lyon County**  
**Kansas**

Boundary Center: 38° 25' 0.43, -96° 8' 57.35

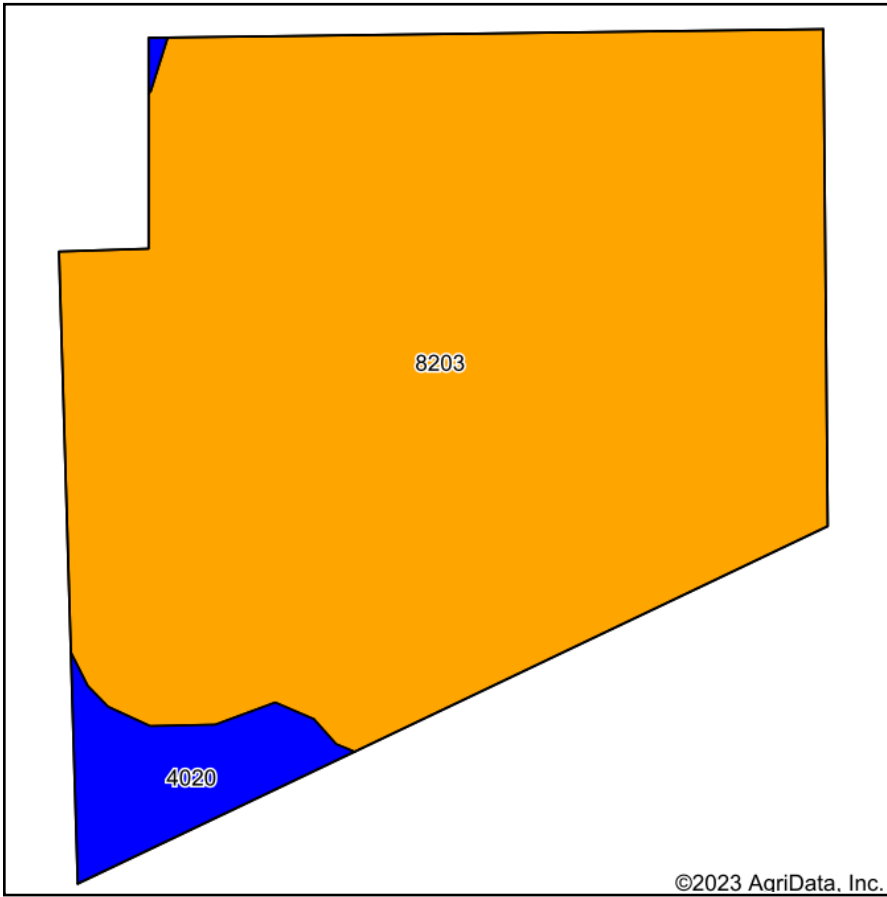


# Topography Hillshade

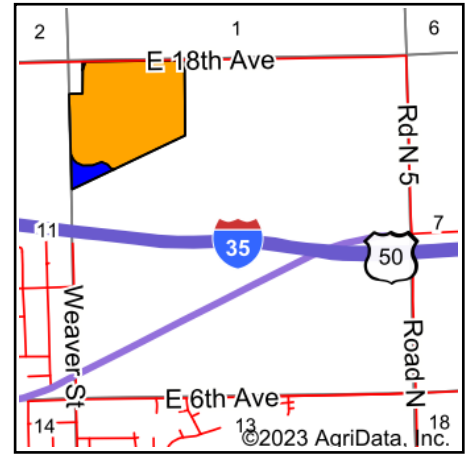


<p>Low Elevation High</p>	<p>Source: USGS 3 meter dem              Interval(ft): 2              Min: 1,099.8              Max: 1,105.5              Range: 5.7              Average: 1,102.2              Standard Deviation: 0.89 ft</p>	<p>0ft 344ft 688ft</p>
<p><b>GRIFFIN</b> Real Estate &amp; Auction</p> <p>Maps Provided By:</p> <p>© AgriData, Inc. 2023 www.AgriDataInc.com</p> <p>Field borders provided by Farm Service Agency as of 5/21/2008.</p>	<p>12-19S-11E              Lyon County              Kansas</p> <p>12/26/2023</p> <p>Boundary Center: 38° 25' 0.43, -96° 8' 57.35</p>	

# Soils Map



Soils data provided by USDA and NRCS.



State: **Kansas**  
 County: **Lyon**  
 Location: **12-19S-11E**  
 Township: **Emporia**  
 Acres: **63.39**  
 Date: **12/26/2023**



Maps Provided By:



Area Symbol: KS111, Soil Area Version: 22

Code	Soil Description	Acres	Percent of field	Non-Irr Class Legend	Non-Irr Class *c	Irr Class *c	*n NCCPI Soybeans
8203	Osage silty clay, 0 to 1 percent slopes, occasionally flooded	59.66	94.1%		IIIw		44
4020	Chase silty clay loam, occasionally flooded	3.73	5.9%		IIw	IIw	66
<b>Weighted Average</b>					<b>2.94</b>	<b>*-</b>	<b>*n 45.3</b>

\*n: The aggregation method is "Weighted Average using all components"

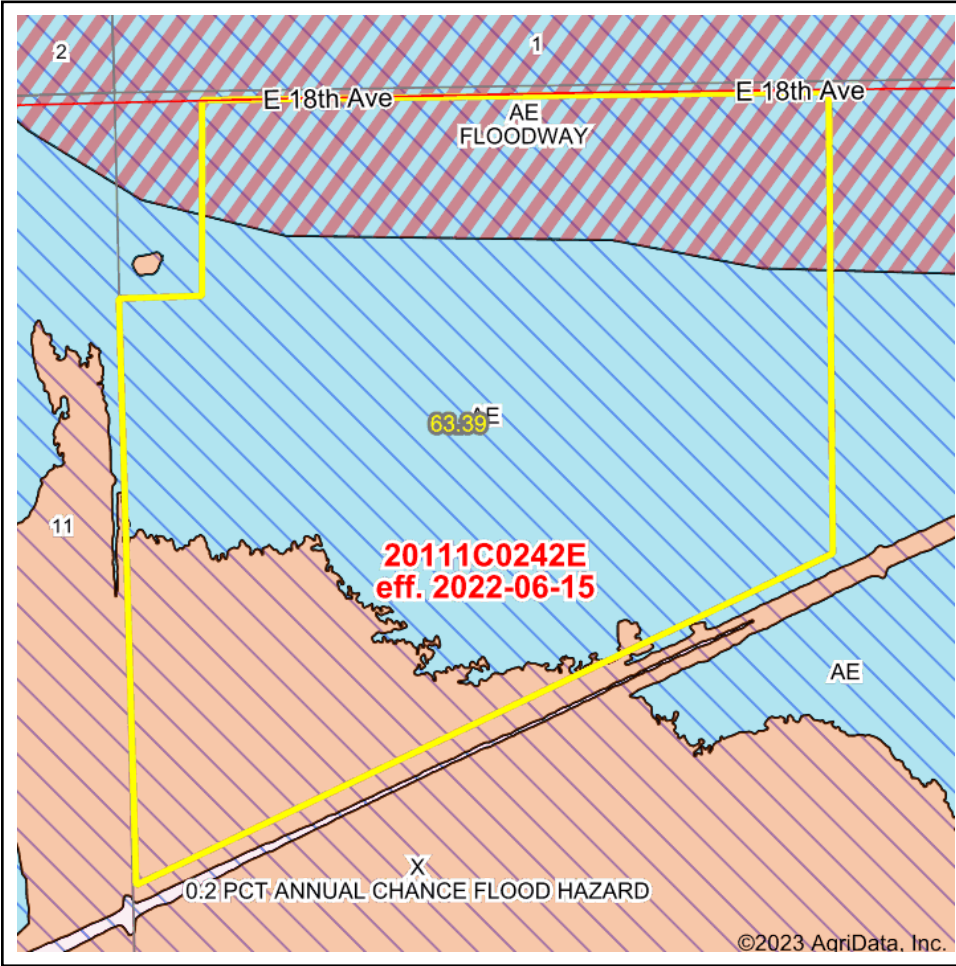
\*c: Using Capabilities Class Dominant Condition Aggregation Method

\*- Irr Class weighted average cannot be calculated on the current soils data due to missing data.

Soils data provided by USDA and NRCS.



# FEMA Report



Map Center: 38° 25' 0.43, -96° 8' 57.25

State: KS    Acres: 63.39  
 County: Lyon                                      Date: 12/26/2023  
 Location: 12-19S-11E  
 Township: Emporia



Maps Provided By:



© AgriData, Inc. 2023

www.AqriDataInc.com



Name	Number	County	NFIP Participation	Acres	Percent
LYON COUNTY	200201	Lyon	Regular	63.39	100%
<b>Total</b>				63.39	100%

Map Change	Date	Case No.	Acres	Percent
No			0	0%

Zone	SubType	Description	Acres	Percent
AE		100-year Floodplain	37.59	59.3%
AE	FLOODWAY	100-year Floodplain	13.8	21.8%
X	0.2 PCT ANNUAL CHANCE FLOOD HAZARD	500-year floodplain	12	18.9%
<b>Total</b>			63.39	100%

Panel	Effective Date	Acres	Percent
20111C0242E	6/15/2022	63.39	100%
<b>Total</b>		63.39	100%